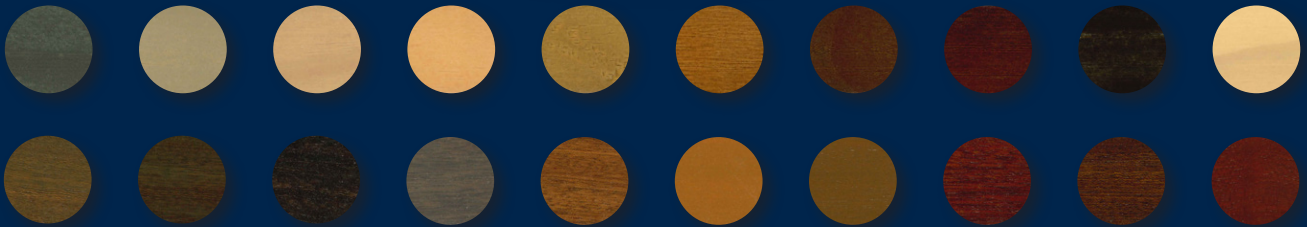


Anker Stuy Coatings
presents

20 new colours



We're introducing a whole **new translucent colour range** for the joinery industry. An exclusive range of colours made for **Accoya and Sapele**.

The systems here are built with three coats. Windows and doors will have a natural appearance and a **long lifetime** with as **limited maintenance** as possible.



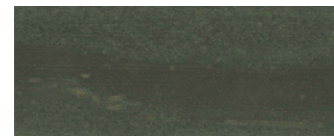
The cities that built the range

The names are derived and inspired by distinctive towns and cities from across the Netherlands and the history of Anker Stuy Coatings.



ACCOYA is a modified wood species and is characterised by its low swelling and shrinkage behaviour, long lifespan, and excellent protection against mould. Due to its modification, coatings look great on Accoya. This makes it a popular wood species for many manufacturers and architects.

ACCOYA



(100) HAARLEM: known for its courtyards and historic buildings. This Burgundian city is full of cafés, restaurants, and typically Dutch architecture. This light grey colour was drawn from the brickwork of the most picturesque sights.



(101) AMSTERDAM: the city of waterways and breath-taking canals. For this city full of culture and history, a colour was developed that matches its character; a sleek nutty colour.



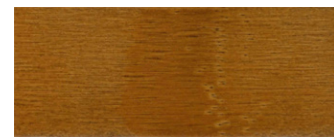
(102) ROTTERDAM: a true port city. This modern city, with a direct mentality and the slogan "don't bullsh*t but clean up", deserves a colour that leaves a strong impression of any joinery work.



(103) ARNHEM: a green city with many parks is a stone's throw from the Veluwe nature reserve. This city suffered badly during the Second World War but is shining again as never before. Of course, we had to choose a natural tone for this one.



(104) VOLENDAM: a fine and cosy fishing town that people fall in love with and stay forever. Many well-known Dutch singers come from Volendam. In Volendam it is always party time! Use this colour to radiate some of that warmth.



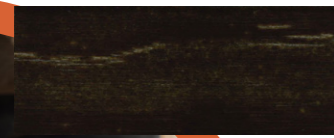
(105) EINDHOVEN: also known as the city of lights. This is the Dutch capital for technology and science. To honour the city of lights, we developed a light orange-brown colour.



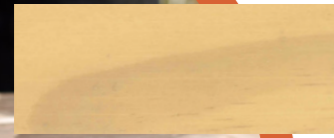
(106) THE HAGUE: is the only Dutch city bordering the North Sea. With two large beaches and, of course, the dunes, beach lovers can't believe their luck. It is also the political capital of the Netherlands. Its brown colour matches the classic Binnenhof, which is the home of Dutch politics.



(107) MONTFORT: this medieval town was considered impregnable for many years. Only after the importation of heavy cannons could the enemy capture it. To honour the years of intransigence, a stoic darker brown.



(108) EDAM: the home of Edam cheese, one of Europe's oldest cheeses. The black colour we chose for this one represents the darkness in which such a delicious cheese is aged.



(109) DOKKUM: the northernmost town in the Netherlands and the most remote checkpoint of the famous eleven cities ice-skating race. To reach this town, skaters must endure a harsh journey often encountering headwinds to earn the 'Elfsteden Cross'. A lasting experience deserves a lasting colour.



WE MAKE PAINT SPECIAL

SAPELE is even in colour, easy to work with, and has no pinholes. The wood type is suitable for doors, windows and frames, furniture, and stairs. Sapele has a number of advantages for use in exterior joinery, the timber is very durable, has an even colour, no pinholes, and results in a beautiful finish once coated.

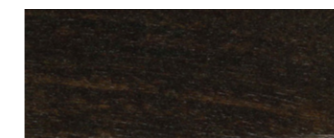
SAPELE



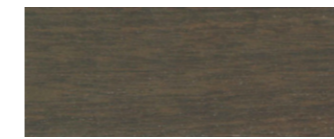
(110) ZANDVOORT: known as "the pearl by the sea" and home to Formula 1 in the Netherlands. During this fantastic event, the town revives even further, and people from all over the world flock to this chic seaside resort; for this, we chose an iconic chic tan.



(111) LEEUWARDEN: the capital of Friesland and a city full of monuments. The city has more than 600 monuments, the most famous of which is the Oldehove. This leaning tower represents the character of the people of Leeuwarden, who feel different from the rest of the province. That is why the choice was made to recreate the brown colour of the Oldehove.



(112) DURGERDAM: this small village northeast of Amsterdam stands in stark contrast to the bustling capital. The traditional houses along the dike are iconic of this village that has remain unchanged through time. This dark tone we chose will also remain timeless.



(113) DELFT: the city with its own colour. The famous Delft blue pottery and "the master of light" Johannes Vermeer come from Delft. Your own colour and a great painter from your city? Especially for the "master of light" we have this light grey colour.



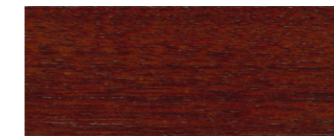
(114) TERWISPEL: the home port of Anker Stuy Coatings cannot of course be missed, as it did not yet have its own colour. Day in, day out, paint is made for you here with extreme precision and working pleasure. This hard work has resulted in a beautiful light brown colour.



(115) HARLINGEN: is one of the oldest port cities in the Netherlands and one that has not lost its historical and rugged character. Therefore, this city that has always remained itself, is assigned its own striking orange-brown colour.



(116) ALKMAAR: also known as "the cheese city". It owes this name to the cheese market that has taken place every Friday from April to September for 400 years. To honour this tradition, a yellow glow has been incorporated through the brown colour.



(117) MAASTRICHT: when we talk about a Burgundian cities, Maastricht naturally comes to mind. With countless cafés, restaurants and, of course, carnival. To celebrate life together with this beautiful city, they have been given a burgundy red brown.



(118) HEERENVEEN: this is the home of skating in the Netherlands. All the great skating champions from the Netherlands and the rest of the world to come here to showcase their talents. The colour we chose represents the distinctive brown of the traditional wooden skates that were once used here.



(119) ASSEN: once a year, Assen turns upside down during the TT motorbike race. The world's best motorcyclists come to Assen for a race. More than 90 times the MotoGP has been held here. Matching the burnt rubber on the asphalt, a dark brown colour has been developed.

20 new colours



The colours can be applied using the paint system below

1st coat Ankolux Aqua Basestain VC-D:

A water-dilutable transparent impregnating, non-film-forming base stain. It offers very good penetration into the wood, high resistance to UV light, does not flake off and therefore adheres very well.

2nd/3rd coats Ankolux Aqua Woodcoat TP:

This water-based transparent penetrating film-forming stain is for exterior use. It offers easy application, good drying times and penetration and moisture regulation and has very good outdoor durability.



WE MAKE PAINT SPECIAL

SUSTAINABLE & INNOVATIVE SINCE 1898

Anker Stuy Coatings

Unit 26 Alpha Business Park
Mallard Road
Peterborough
PE3 8AF

Phone

01733 215 444

E-mail

info@ankerstuy.co.uk

Website

www.ankerstuy.com

Webshop

www.ankerstuyshop.co.uk