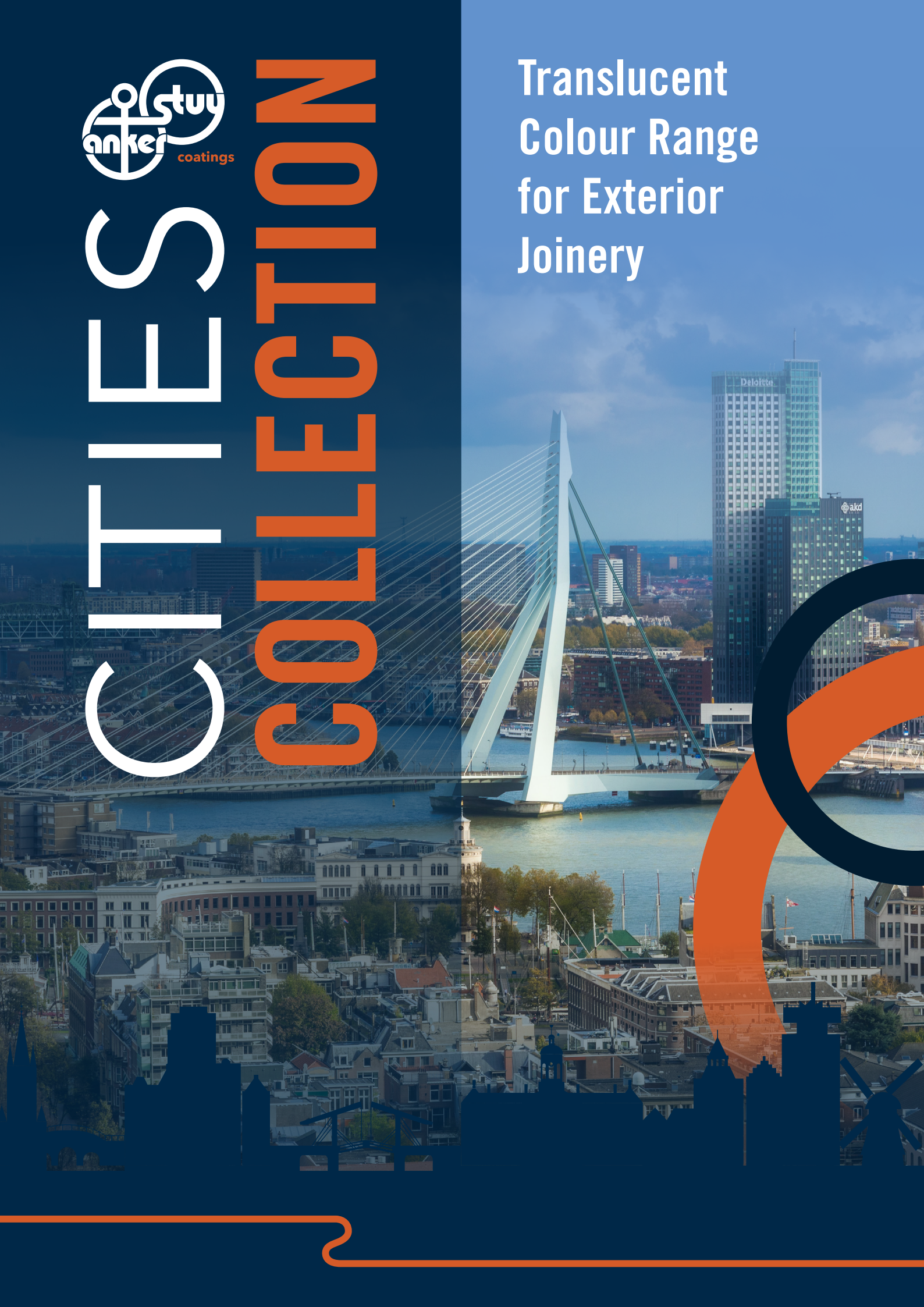




CITIES

COLLECTION

Translucent
Colour Range
for Exterior
Joinery





CITIES COLLECTION

Translucent colour collection for windows, doors and other exterior joinery created with Ankolux Aqua Woodcoatings

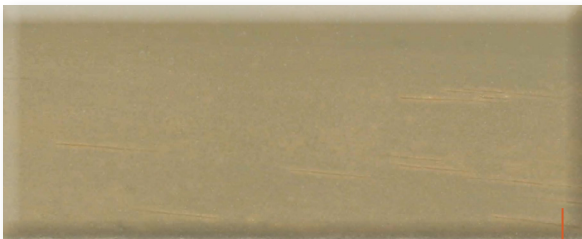
LIGHT SUBSTRATE



HAARLEM 100



EINDHOVEN 105



AMSTERDAM 101



DEN HAAG 106



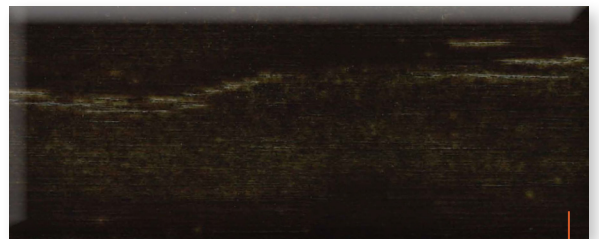
ROTTERDAM 102



MONTFORT 107



ARNHEM 103



EDAM 108



VOLEDAM 104



DOKKUM 109

The translucent colours in the CITIES COLLECTION have been curated to include sufficient pigment to protect exterior joinery for up to 8 years before repainting. This range excentuates the natural hue and tone the timber while offering lasting protection to wooden windows, doors and other exterior joinery.

Please note: Accoya and sapele were chosen as examples of light and dark timber; finishes may differ slightly with other timbers and application methods.



CITIES COLLECTION

Translucent colour collection for windows, doors and other exterior joinery created with Ankolux Aqua Woodcoatings

DARK SUBSTRATE



ZANDVOORT 110



HARLINGEN 115



LEEUWARDEN 111



ALKMAAR 116



DURGERDAM 112



MAASTRICHT 117



DELFT 113



HEERENVEEN 118



TERWISPEL 114



ASSEN 119

The translucent colours in the CITIES COLLECTION have been curated to include sufficient pigment to protect exterior joinery for up to 8 years before repainting. This range excentuates the natural hue and tone the timber while offering lasting protection to wooden windows, doors and other exterior joinery.

Please note: Accoya and sapele were chosen as examples of light and dark timber; finishes may differ slightly with other timbers and application methods.



System Build and Colour Codes

DARK SUBSTRATE LIGHT SUBSTRATE

| Name | Example timber used | 1 st layer colour code | 2 nd layer colour code | 3rd layer colour code |
|-------------------|---------------------|---|-----------------------------------|----------------------------------|
| | | 16-0201 Ankolux Aqua Impregnating Woodstain | 16-0221 Ankolux Aqua Woodcoat TP | 16-0221 Ankolux Aqua Woodcoat TP |
| Haarlem | Accoya | 4051 | 4080 ● | 4080 ● |
| Amsterdam | Accoya | 4052 | 4080 ● | 4080 ● |
| Rotterdam | Accoya | 4053 | 4080 ● | 4080 ● |
| Arnhem | Accoya | 4054 | 4080 ● | 4080 ● |
| Volendam | Accoya | 4055 | 4082 ● | 4082 ● |
| Eindhoven | Accoya | 4056 | 4082 ● | 4082 ● |
| Den Haag | Accoya | 4057 | 4082 ● | 4082 ● |
| Montfort | Accoya | 4058 | 4082 ● | 4082 ● |
| Edam | Accoya | 4059 | 4083 ● | 4083 ● |
| Dokkum | Accoya | 4060 | 4081 ● | 4081 ● |
| Zandvoort | Sapeli | 4061 | 4082 ● | 4082 ● |
| Leeuwarden | Sapeli | 4062 | 4083 ● | 4083 ● |
| Durgerdam | Sapeli | 4063 | 4083 ● | 4083 ● |
| Delft | Sapeli | 4064 | 4080 ● | 4080 ● |
| Harlingen | Sapeli | 4066 | 4084 ● | 4084 ● |
| Alkmaar | Sapeli | 4067 | 4085 ● | 4085 ● |
| Maastricht | Sapeli | 4068 | 4083 ● | 4083 ● |
| Heerenveen | Sapeli | 4069 | 4083 ● | 4083 ● |
| Assen | Sapeli | 4070 | 4086 ● | 4086 ● |
| Terwispel | Sapeli | 4071 | 4083 ● | 4083 ● |



The colour codes indicate topcoat used. The systems in the Cities Collection only require 6 different topcoat colours.

All colours are based on a 3 coat system, 16-0201 Ankolux Aqua Impregnating Woodstain offers colour depth and 16-0221 Ankolux Aqua offers long lasting protection. Each product is applied with a wet film-thickness of 120µm per coat.

Technical Data Sheets

16-0201 Ankolux Aqua Impregnating Woodstain

16-0221 Ankolux Aqua Woodcoat TP

System Specification

Windows and doors

Non-dimensionally stable exterior joinery



Anker Stuy Coatings

Hellingwal 1
8407 EM Terwispel
Netherlands

Telefoon

+31 (0) 513 465 000

E-mail

info@ankerstuy.nl

Website

www.ankerstuy.nl

Webshop

www.ankerstuyshop.nl

Anker Stuy Coatings

Unit 25 Alpha Business Park
Peterborough PE3 8AF
United Kingdom

Phone

01733 215 444

E-mail

info@ankerstuy.co.uk

Website

www.ankerstuy.com

Webshop

www.ankerstuyshop.co.uk