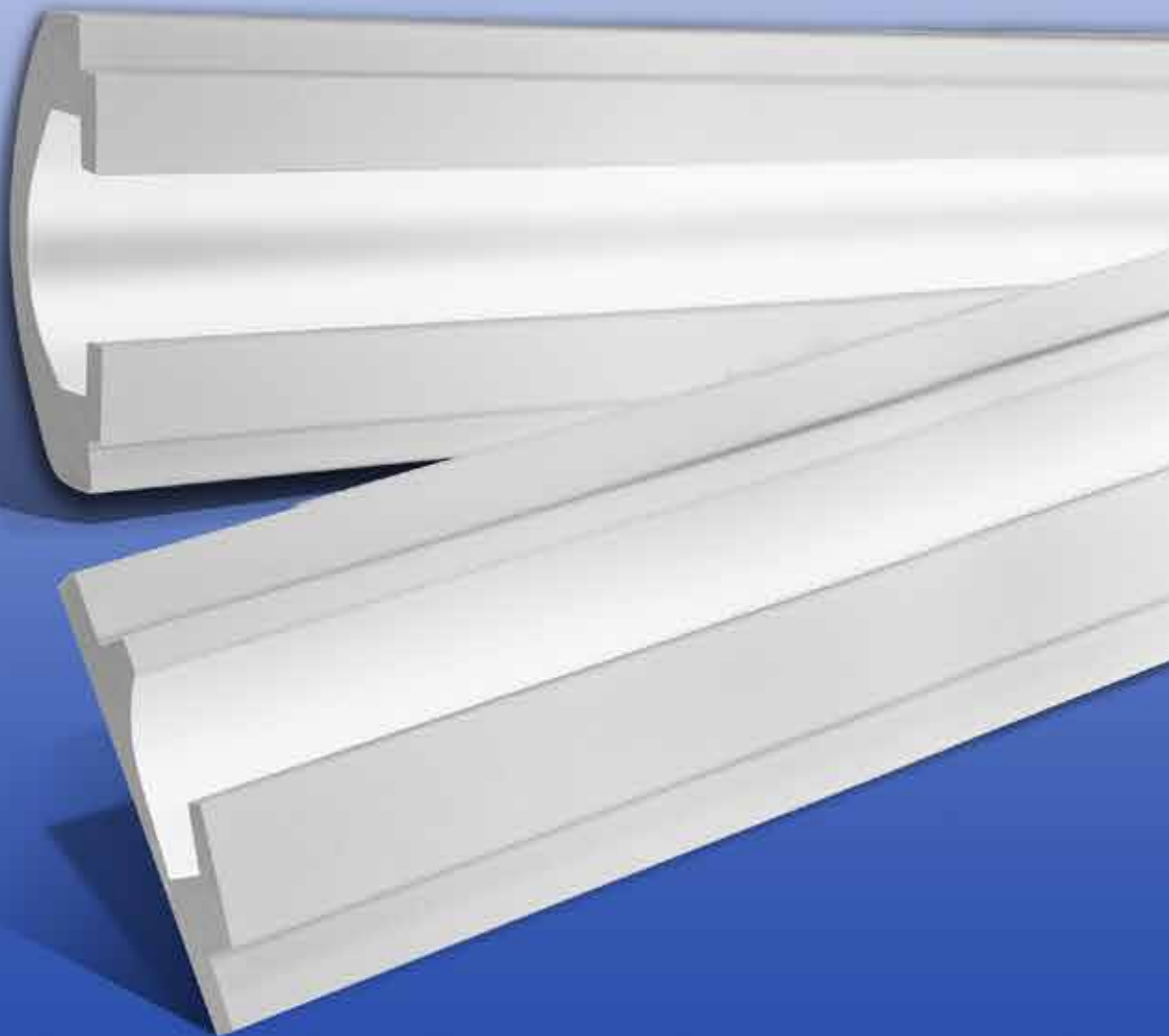




# Recommendations to perform installation work



### Installation of a wall-mount cornice for LED fixtures



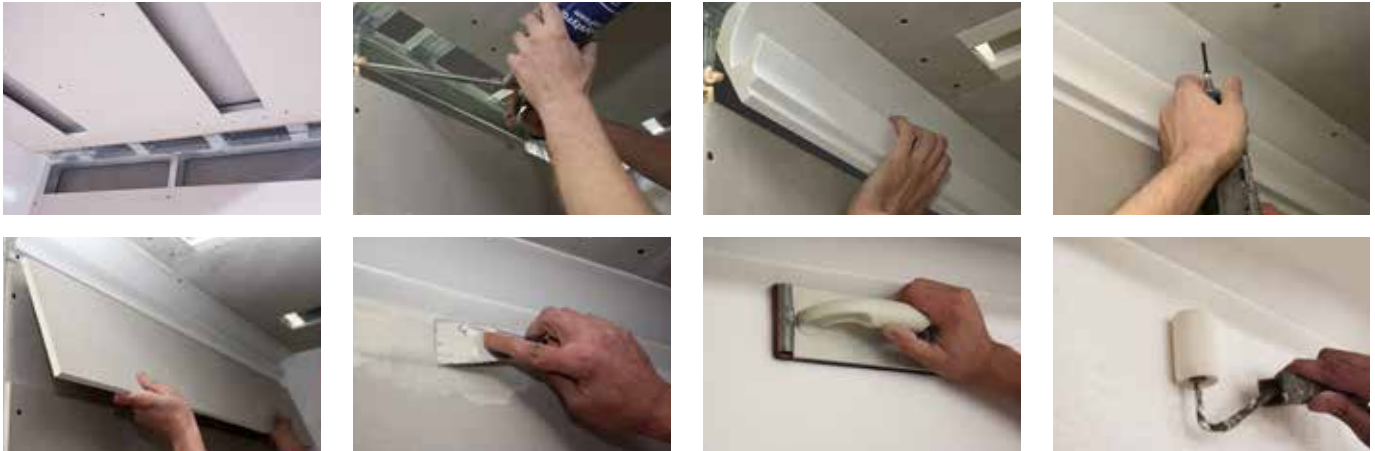
1. Make marks on surface of a wall with a level and chalkline to mount the cornice.
2. Apply adhesive to the glued surface of the wall-mounted cornice evenly around whole perimeter of the glued surface
3. Press the glued cornice together with applied adhesive by hands to the supporting surface. Press shall be continued until whole glued element will have good contact with the supporting surface.
4. Fix by screws the contact with the supporting surface.
5. In the case of gluing of two or more elements, glue is applied also onto joints of the glued elements.
6. Apply restoration mixture Tesori or Satengips on joints of the elements and on places of mounting of screws.
7. After restoration mixture drying, places with the mixture shall be treated with P100 grit sandpaper.
8. Apply a finishing coat with a brush or roller.

### Installation of a built-in ceiling cornice for LED fixtures



1. Prepare a hole in gypsum plasterboard that fits to a selected mounting element. The hole width shall match the size of the cornice without mounting lugs of the ceiling cornice
2. Apply glue onto technological brows of the ceiling cornice evenly around whole perimeter of glued surface.
3. Insert cornice coated with glue into the prepared hole in the ceiling
4. Wait for bonding time indicated by a glue manufacturer on its packaging. In the case of gluing of two or more elements, the metal structure shall be laid out or glued element shall be cut so that joints of the glued elements rests on the metal profile, glue is applied also onto joints of the glued elements.
5. Fix by screws the contact with the supporting surface.
6. Apply restoration mixture Tesori or Satengips on joints of the elements and on places of mounting of screws in three passes. At the second pass with the restoration mixture, apply fiberglass mesh at joint places. Apply restoration mixture Tesori or Satengips on places of mounting of screws.
7. After restoration mixture drying, places with the mixture shall be treated with P100 grit sandpaper.
8. Apply a finishing coat with a brush or roller.

### Installation of a built-in, bridging (wall/ ceiling) cornice for LED fixtures



1. Prepare a hole in gypsum plasterboard that fits to a selected mounting element
2. Apply glue to the metal profile where the cornice is glued
3. Press the glued cornice to the metal profile with glue by hands. Press shall be continued until whole glued element will have good contact with the metal profile
4. Fix by screws for metal profiles the places of contact between the element and the metal profile.
5. In the case of gluing of two or more elements, the metal structure shall be laid out or glued element shall be cut so that joints of the glued elements rests on the metal profile, glue is applied also onto joints of the glued elements
6. Close with a second layer of gypsum plasterboard places of contacts of the bridge cornice, fix the second layer of gypsum plasterboard with screws for metal profiles. Apply restoration mixture Tesori or Satengips on joints of the elements and gypsum plasterboard in three passes. At the second pass with the restoration mixture, apply fiberglass mesh at joint places. Apply restoration mixture Tesori or Satengips on places of mounting of screws.
7. After restoration mixture drying, places with the mixture shall be treated with P100 grit sandpaper.
8. Apply a finishing coat with a brush or roller.

### Installation of a built-in wall-mount cornice for LED fixtures on previously prepared gypsum plasterboard surface



1. Cut mounting parts of the built-in cornice with a model knife
2. Prepare a hole in the gypsum plasterboard that fits to the selected mounting element. Apply glue to the metal profile where the cornice is glued
3. Press the glued cornice to the metal profile with glue by hands.
4. Press shall be continued until whole glued element will have good contact with the metal profile
5. Fix by screws for metal profiles the places of contact between the element and the metal profile. In the case of gluing of two or more elements, the metal structure shall be laid out or glued element shall be cut so that joints of the glued elements rests on the metal profile, glue is applied also onto joints of the glued elements
6. Apply restoration mixture Tesori or Satengips on joints of the elements and gypsum plasterboard in three passes. At the second pass with the restoration mixture, apply fiberglass mesh at joint places. Apply restoration mixture Tesori or Satengips on places of mounting of screws.
7. After restoration mixture drying, places with the mixture shall be treated with P100 grit sandpaper.
8. Apply a finishing coat with a brush or roller.

ELITE  
DECOR

INDUSTRY

STUCCO  
MOULDINGS  
MANUFACTURER

Certified by ISO 9002

Lijst & Ornament  
Online verkoop van sierlijsten, ornamenten  
[info@lijstenornament.nl](mailto:info@lijstenornament.nl)

Rigtersbleek Aalten 4 - B10, 7521 RB Enschede  
Tel: +31 (53) 4358235, [www.lijstenornament.nl](http://www.lijstenornament.nl)