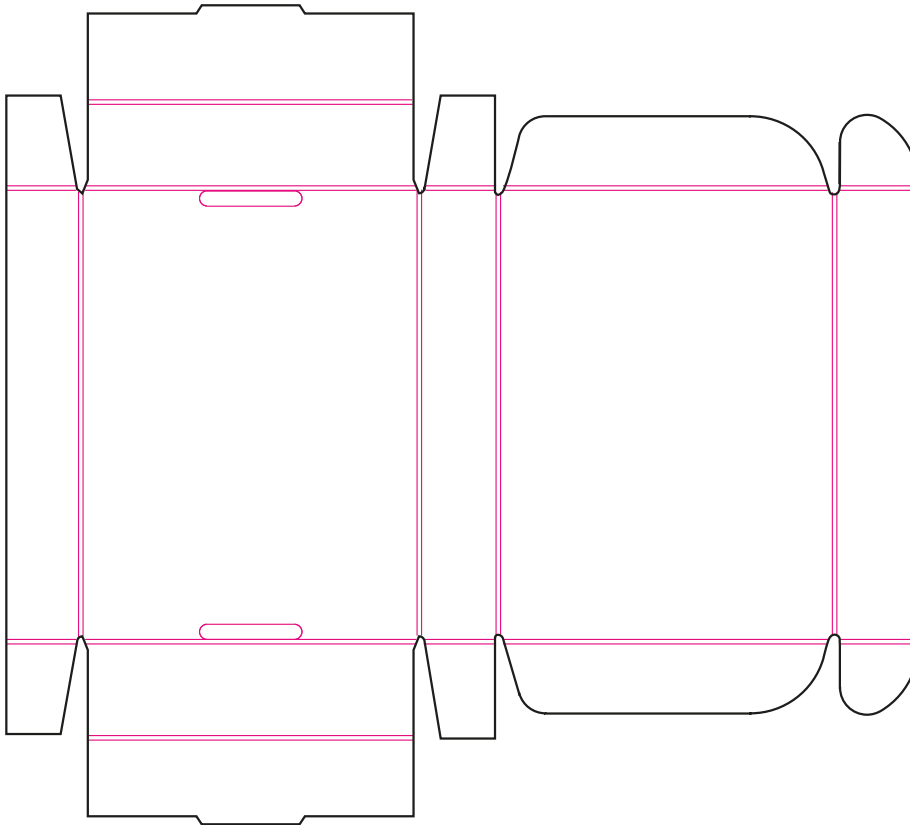
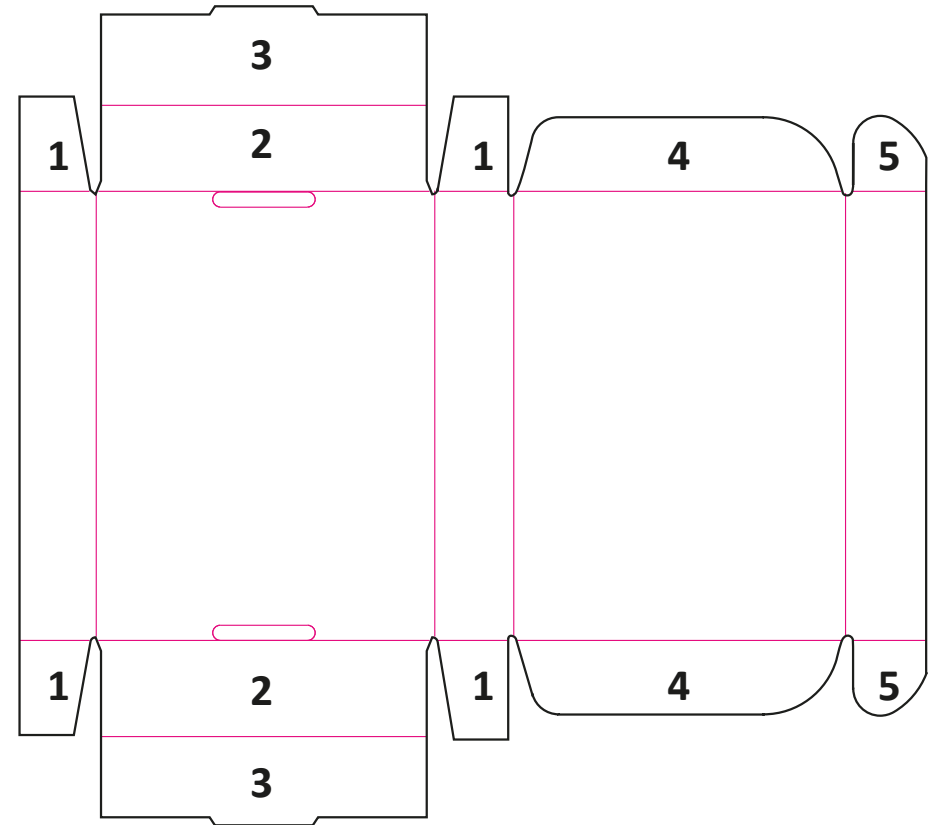


## Outside



## Inside



## Folding instructions

- Use a solid and flat surface to fold / assemble
- The outside of the box has folding lines which seem to be lying 'on top of the carton'
- The inside of the box has the small incised folding lines
- Before assembling the box, you should firmly prefold each folding line (the red lines in the image)

## How to assemble the box

1. Fold the small flaps to the inside (4 pieces)
2. Push the small sides toward the small flaps from Nr. 1
3. Fold this part over Nr. 1 en 2 towards the inside of the box. Put the extended parts into the slit in the bottom
4. Fold these parts to the inside. These should be on the inside of the box, when you close the box
5. Insert these in the openings in front on the left and right side