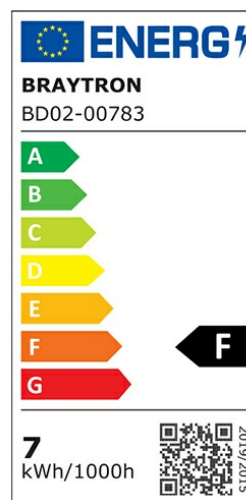
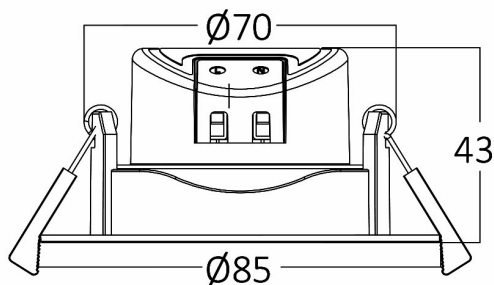
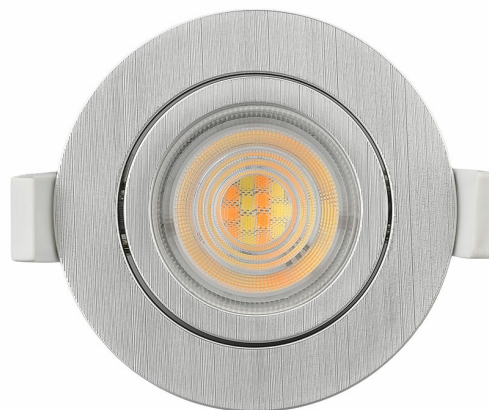


# Braytron

## PRODUCT DATASHEET

MODEL NO BD02-00783

DESCRIPTION BRY-SPOTLED G3-7W-RND-SLV-3IN1-LED SPOTLIGHT



BRAYTRON SRL

Bulaverdul iuliu maniu, Nr.616, Sector 6, 061129, Bucuresti-ROMANIA

info@braytron.com

www.braytron.com

### General Characteristics

|              |   |                 |
|--------------|---|-----------------|
| Model No     | : | BD02-00783      |
| Main Family  | : | Indoor Lighting |
| Sub Family   | : | LED Spotlight   |
| Type         | : | Spotlight       |
| Body Color   | : | Silver          |
| Lamp Shape   | : | Directional     |
| Dimmable     | : | Not-Dimmable    |
| Light Source | : | LED             |
| Warranty     | : | 2 years         |
| Class        | : | Class II        |
| IP           | : | IP20            |

### Electrical Characteristics

|                         |   |            |
|-------------------------|---|------------|
| Lifetime (at 2.7 h/day) | : | 20000 h    |
| Voltage                 | : | 220-240V   |
| Power Factor            | : | >0,5       |
| Material                | : | PC         |
| Working Temperature     | : | -20 C-40 C |
| Frequency               | : | 50-60 Hz   |

### Package Informations

|         |   |               |
|---------|---|---------------|
| N.W.    | : | 7,4 kgs       |
| G.W.    | : | 9,6 kgs       |
| PCS/CTN | : | 100 pcs       |
| Length  | : | 460 mm        |
| Width   | : | 370 mm        |
| Height  | : | 288 mm        |
| EAN     | : | 5949097718779 |

### Lamp Characteristics

|                             |   |             |
|-----------------------------|---|-------------|
| Wattage                     | : | 7 w         |
| Color Temperature           | : | 3IN1        |
| Quse Lumen                  | : | 630 lm      |
| Color Rendering Index (CRI) | : | >80         |
| Energy Efficiency Level     | : | F           |
| Beam Angle                  | : | 38° Degrees |

### Lamp Dimensions & Weight

|           |   |       |
|-----------|---|-------|
| Diameter  | : | 85 mm |
| P. Height | : | 43 mm |
| Cutout    | : | 70 mm |
| Weight    | : | 74 gr |