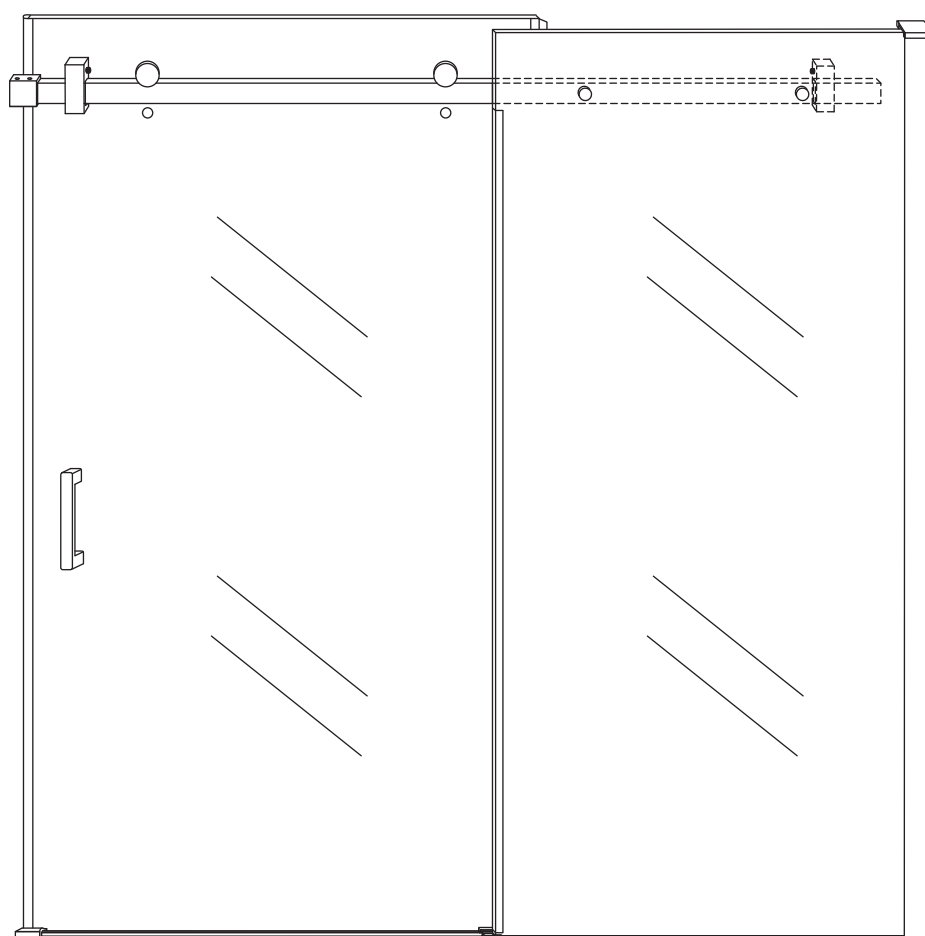


INSTALLATIE VOORSCHRIFT

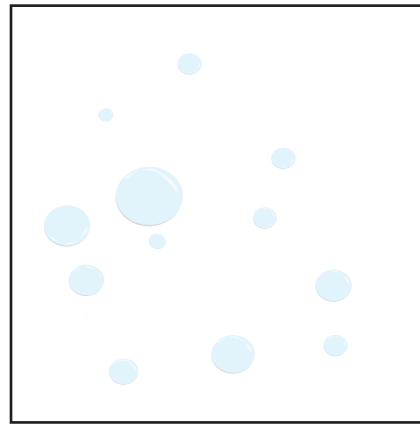
DOUCHEDEUR IN NIS met NANO behandeld glas

1400(1380-1400)x2000mm





Zonder NANO



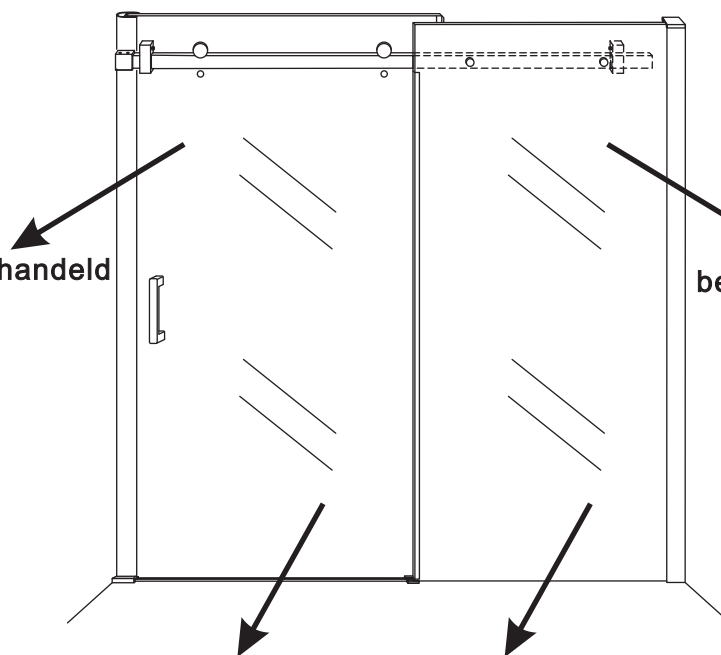
NANO



beide zijden NANO behandeld



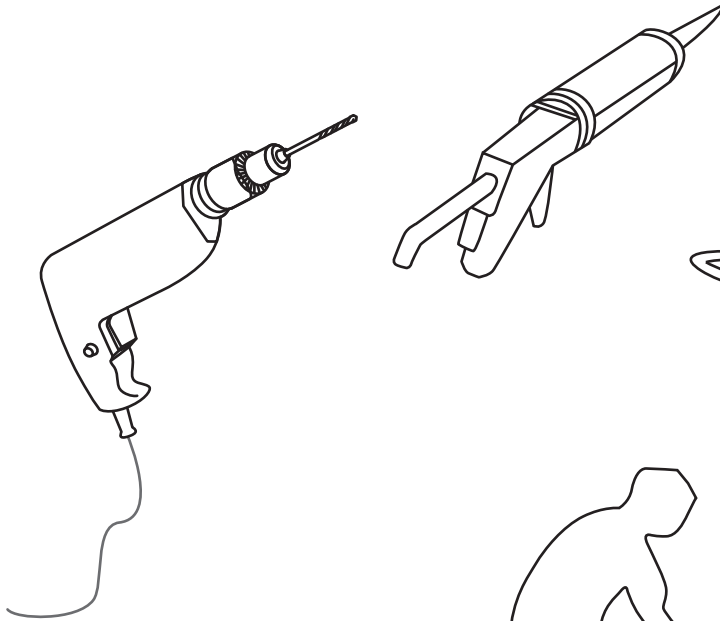
beide zijden NANO behandeld



beide zijden NANO behandeld

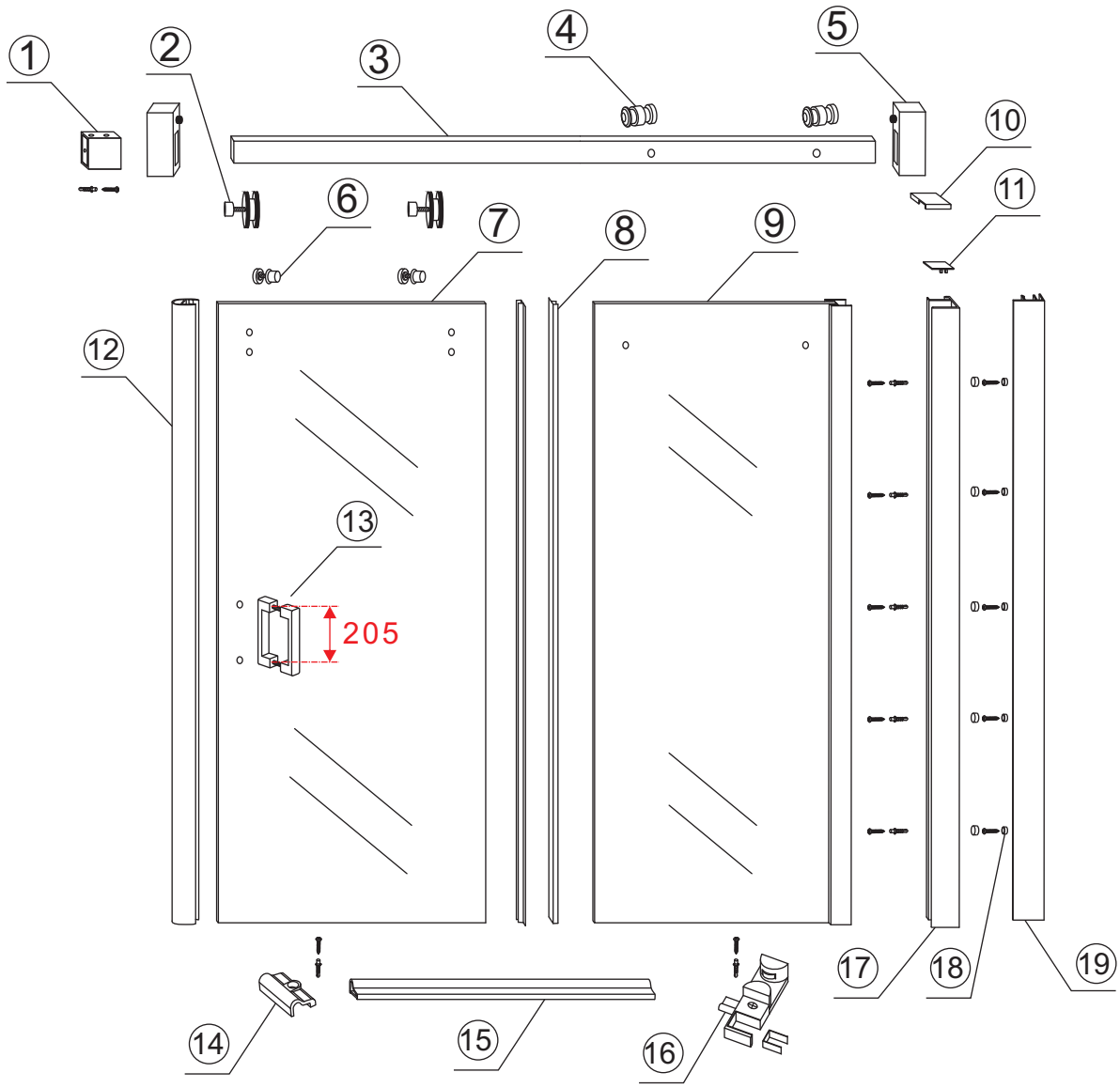
NANO garantie: 5 jaar bij normaal gebruik

LET OP: gebruik geen grove scherpe voorwerpen, zoals schuursponsjes of staalwol om het glas schoon te maken.



1

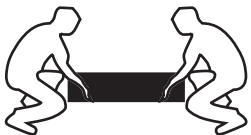
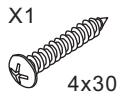
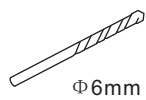
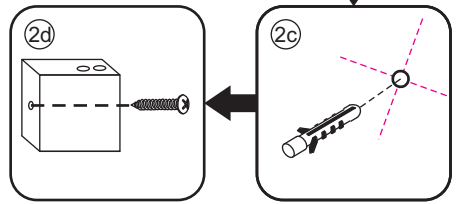
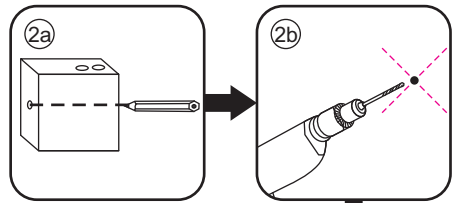
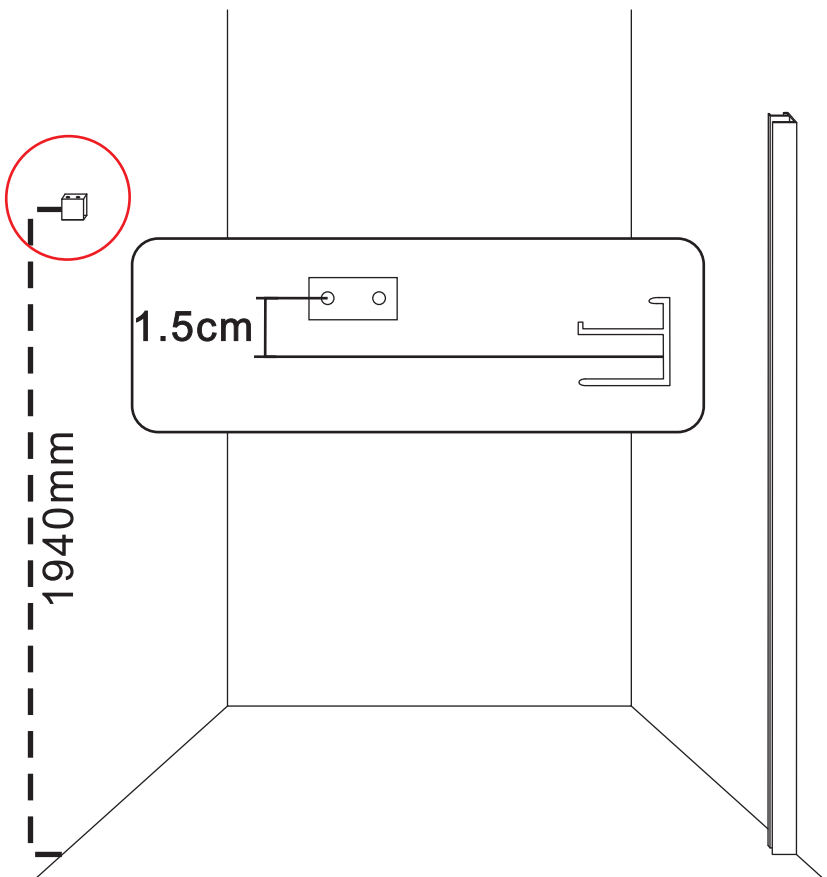
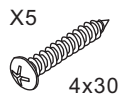
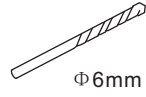
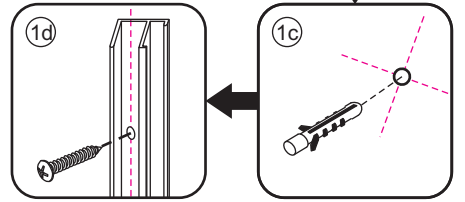
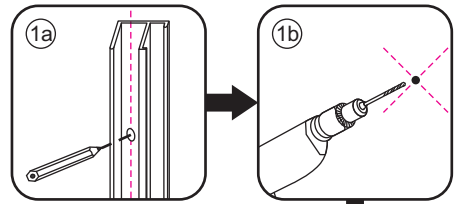
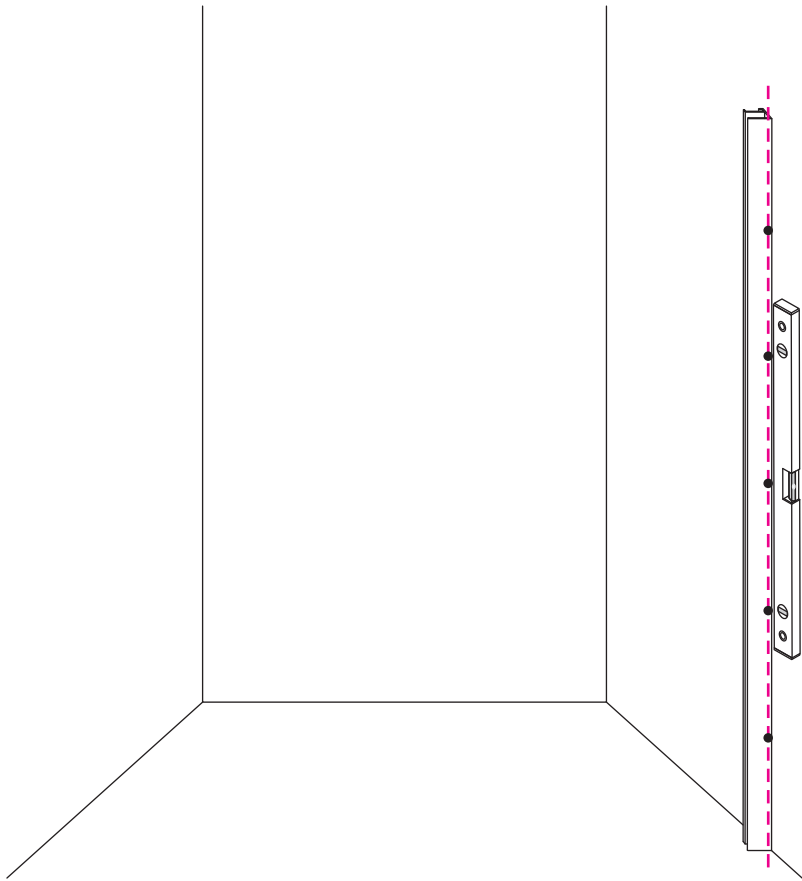


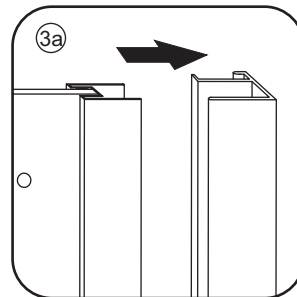
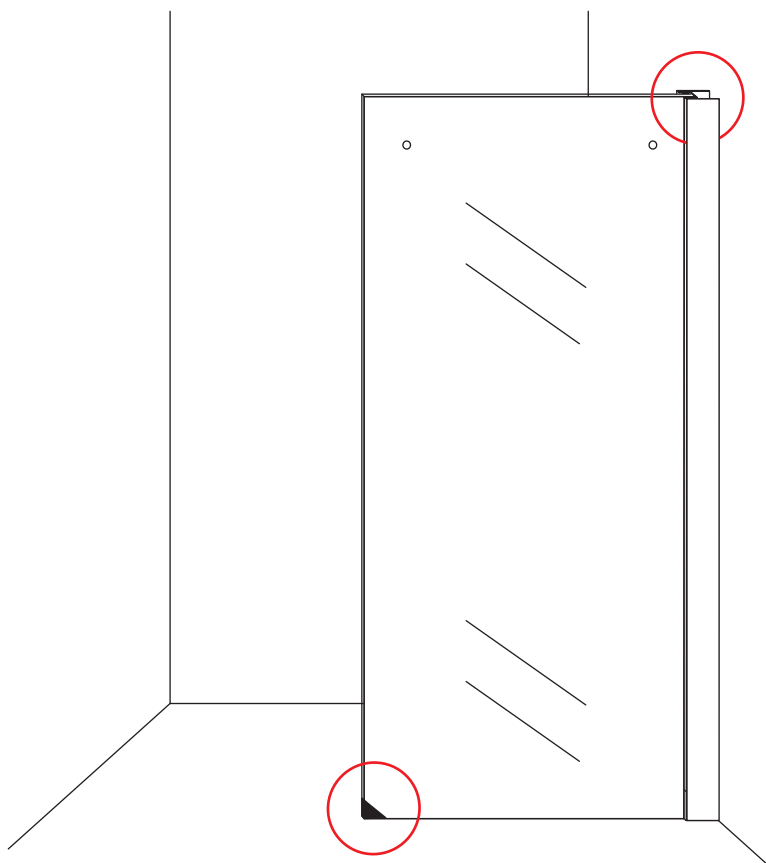


- | | | | | | | |
|------|------|------|------|------|------|------|
| ① X1 | ② X2 | ③ X1 | ④ X2 | ⑤ X2 | ⑥ X2 | ⑦ X1 |
| ⑧ X2 | ⑨ X1 | ⑩ X1 | ⑪ X1 | ⑫ X1 | ⑬ X1 | ⑭ X1 |
| ⑮ X1 | ⑯ X1 | ⑰ X1 | ⑱ X5 | ⑲ X1 | X13 | X8 |

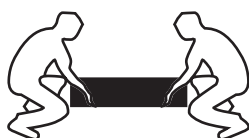
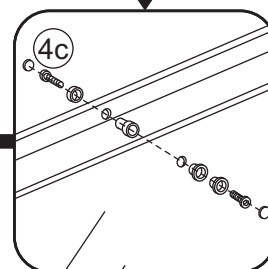
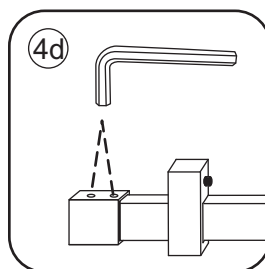
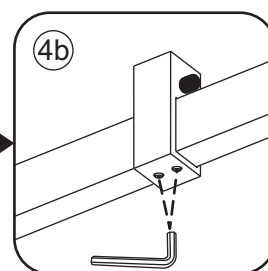
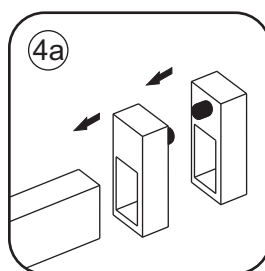
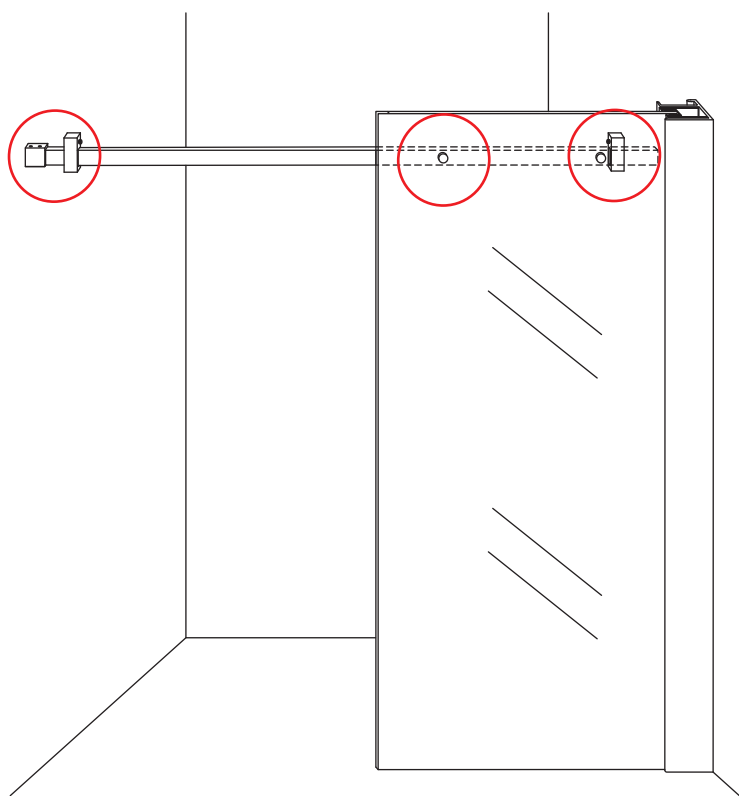


3

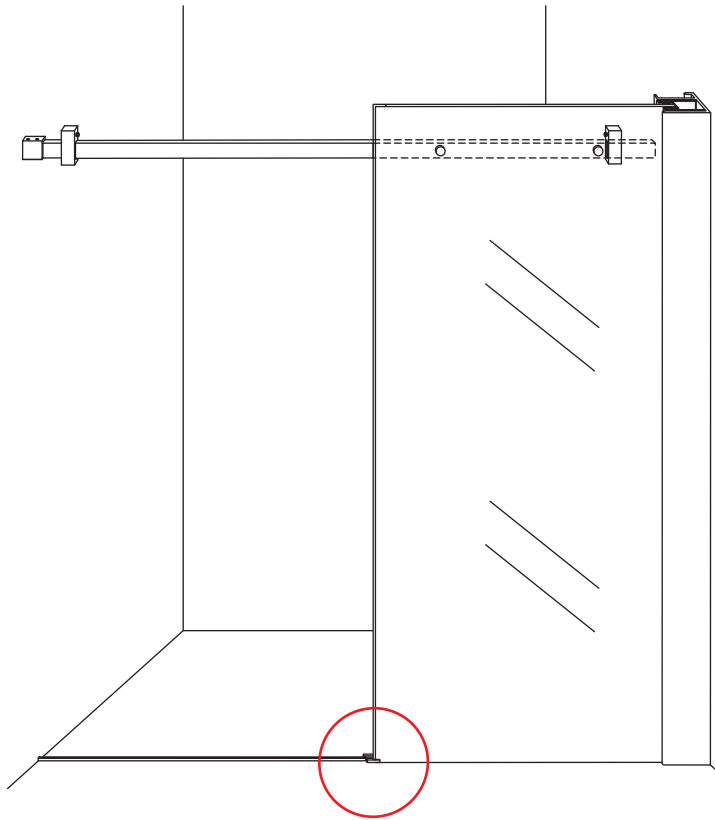




 **Verwijder de zwarte hoekbeschermers pas als de cabine helemaal is geïnstalleerd!**



5



5a: Marking the installation point on the cabinet's side panel.

5b: Drilling a hole into the cabinet's side panel.

5c: Drilling a hole into the cabinet's bottom panel.

5d: Inserting the mounting bracket into the cabinet's side panel.

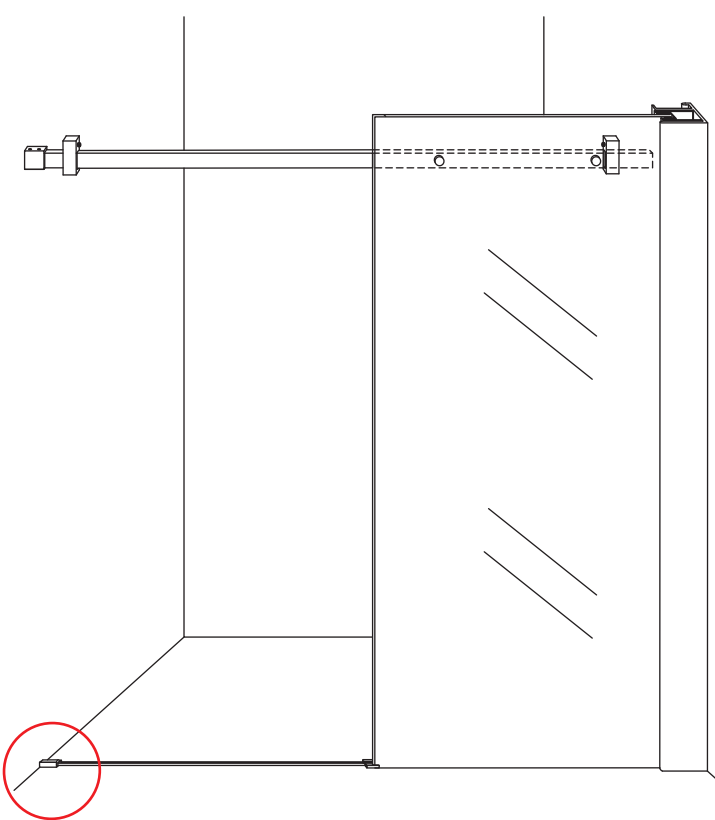
5e: Tightening the screw into the side panel.

5f: Tightening the screw into the bottom panel.

Φ6mm X1

4x16 X1

Φ6x30 X1



6a: Marking the installation point on the cabinet's side panel.

6b: Drilling a hole into the cabinet's side panel.

6c: Drilling a hole into the cabinet's bottom panel.

6d: Inserting the mounting bracket into the cabinet's side panel.

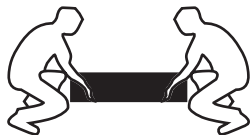
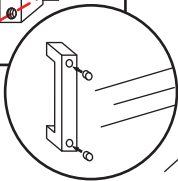
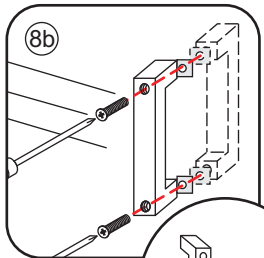
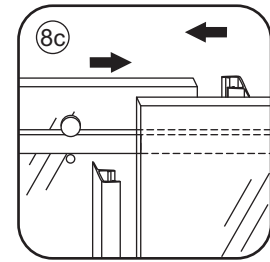
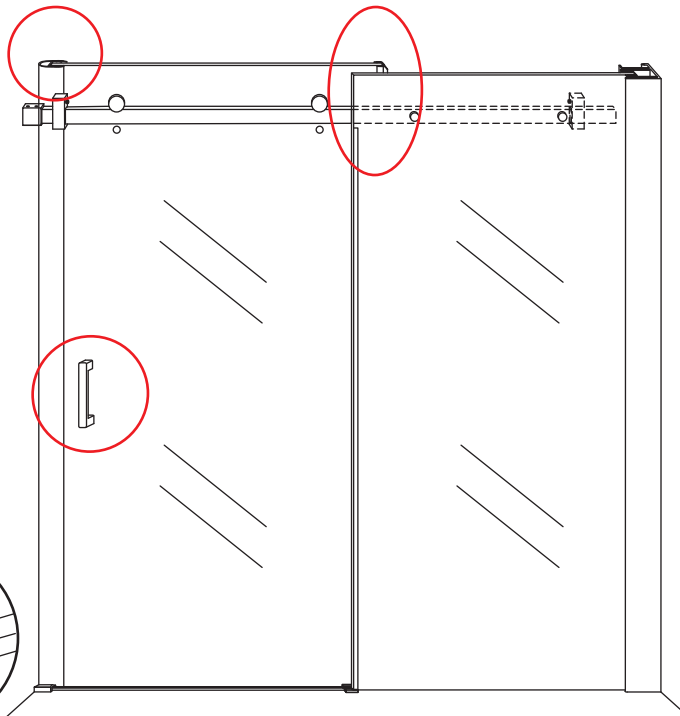
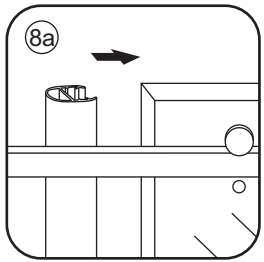
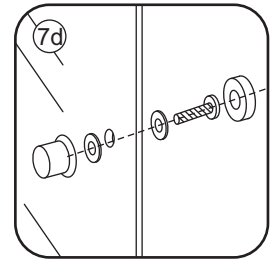
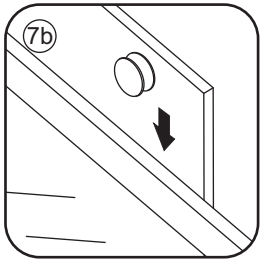
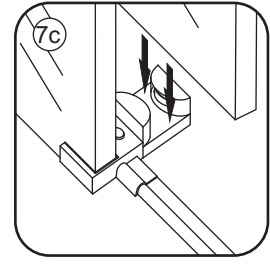
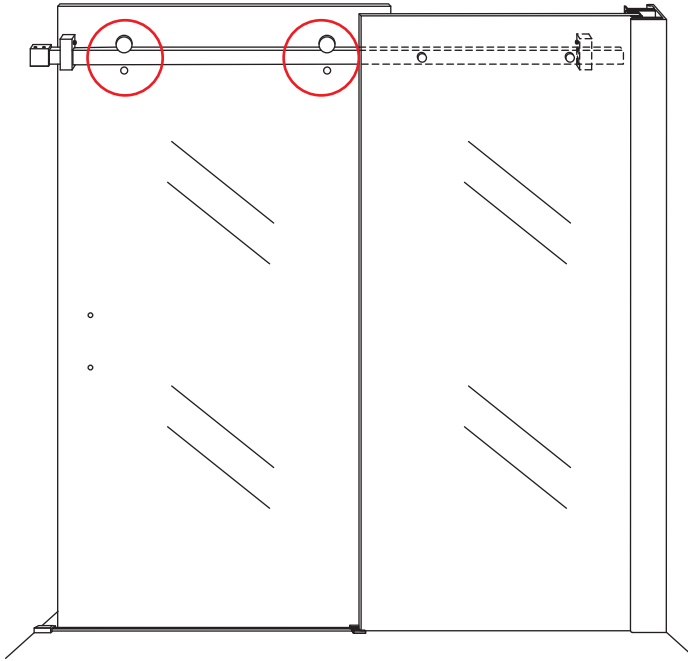
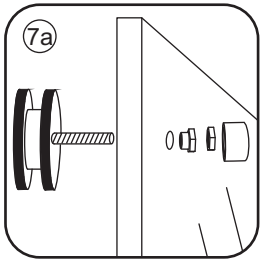
6e: Tightening the screw into the side panel.

Φ6mm X1

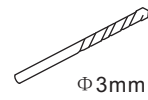
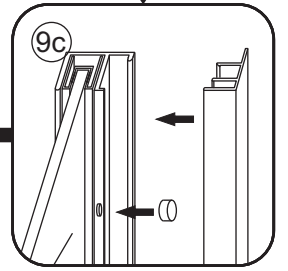
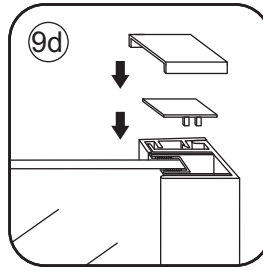
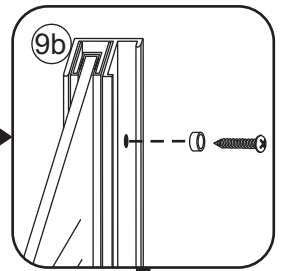
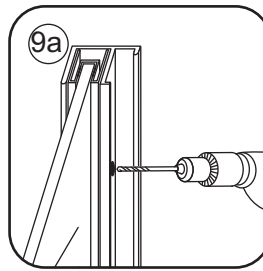
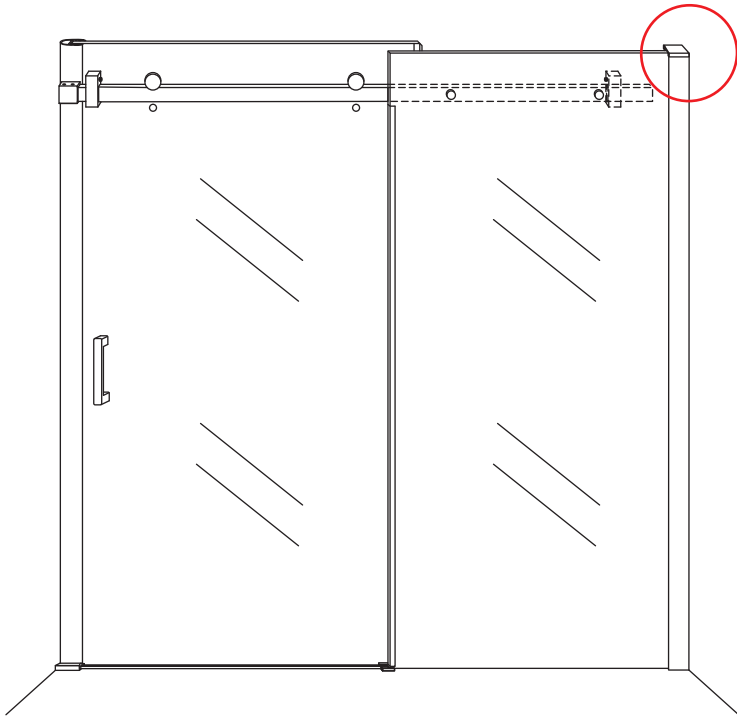
4x16 X1

Φ6x30 X1

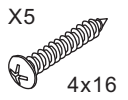




7

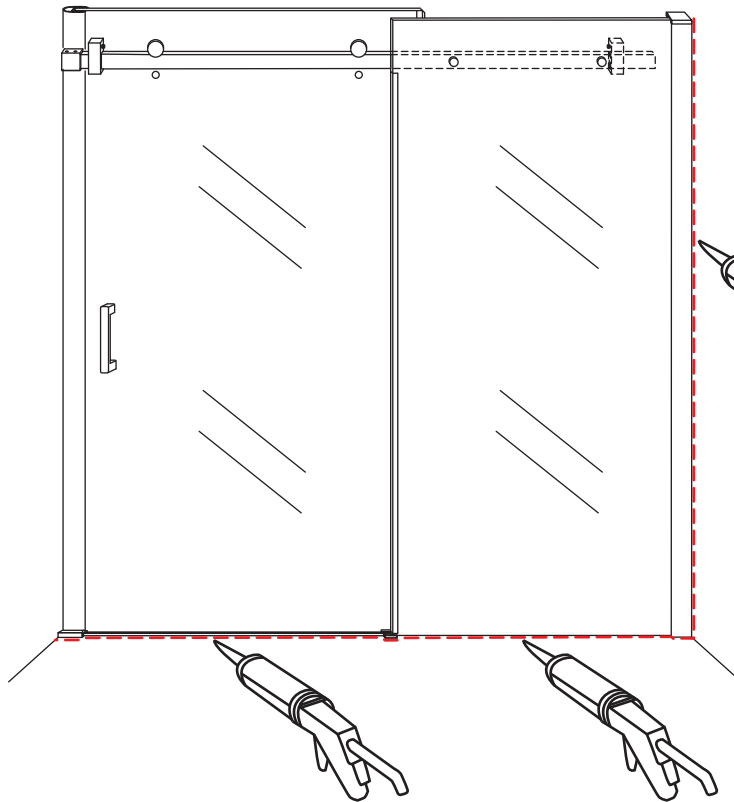


Φ 3mm



X5

4x16



**Voorzie alleen de
buitenzijde van de
cabine van siliconenkit.**

