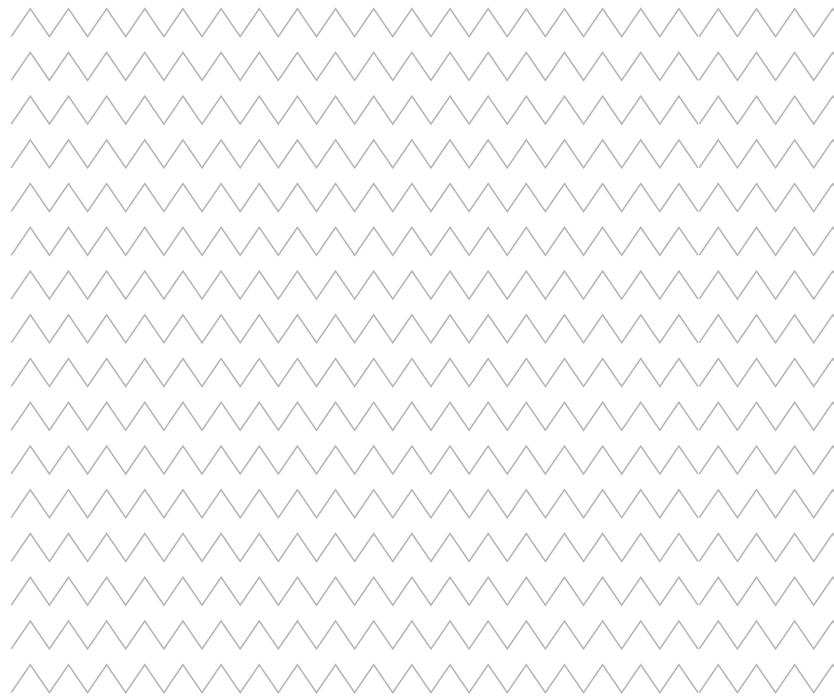
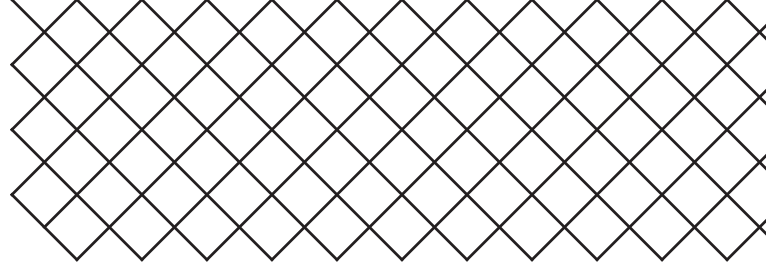


# UltiMaker S7

## Spare parts catalog



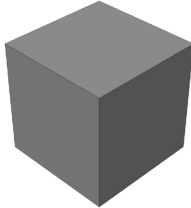
# Introduction



## Explanation

This document contains information about UltiMaker S7 compatible service parts and accessories. The following information is shown for all items:

- **Product image** (a digital render of the part or assembly, for reference only)
- **UltiMaker part number** (a four or six digit code unique to the part)
- **Official UltiMaker part name** (how the item is listed in our system and the webshop)
- **Customer-friendly part name** (the term often used in external communication, in gray)
- **Description** (where and how the item is found or used in the printer)

	<b>Number</b>	<b>Official UltiMaker part name</b>
		Customer-friendly part name
		Description of the part and where it is used.

## Disclaimer

The information about the UltiMaker S7 compatible service parts is collected with care. However, UltiMaker service parts are subject to change although effort is taken to keep the spare part catalog up to date, this document may not show the most recent information.

Note that not all service parts shown in this document may be available for purchase at all times due to stock levels, part changes, or for other reasons.

## Compatibility

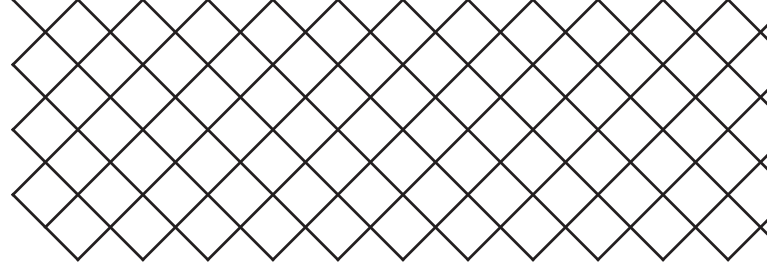
Not all items shown in this spare part catalog are unique to the UltiMaker S7; some items are also used in or compatible with other UltiMaker products. On the contrary, some of the parts shown in this catalog are only compatible with the UltiMaker S7 and cannot be used in other products.

For more information about part compatibility, please refer to the service parts matrix.

## Contact

For any questions, comments, or feedback regarding this UltiMaker S7 spare parts catalog or the UltiMaker service part portfolio, please contact the Customer Service team via [support.ultimaker.com](https://support.ultimaker.com).

# Table of contents



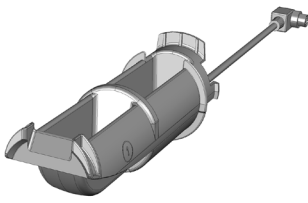
## UltiMaker S7 accessories and add-ons

Accessories	4
Tools & maintenance	6
Power cables	7
Documents	8

## UltiMaker S7 spare parts and assemblies

Housing	9
Gantry	13
Motors	17
Print head	19
Feeder	25
Z stage	27
Air Manager	30
Electronics	31
Cables	33
Nuts & bolts	36

# Accessories



## 227630 NFC Reel Holder Assembly UMS5 Service

Spool holder assembly

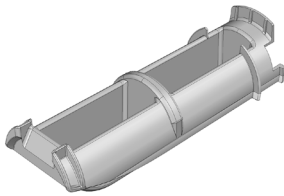
Complete NFC spool holder assembly including cable.  
Does not include filament guide (227627).



## 227627 Filament Guide Assembly Service

Filament guide

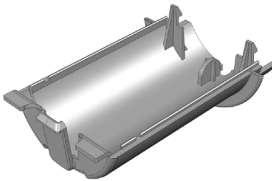
Part of the spool holder assembly on which the back spool of material is placed.



## 1724 NFC Spool Holder

Spool holder housing

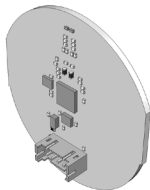
Plastic housing of the NFC spool holder.  
Does not include PCB or cable.



## 1725 NFC PCB Cover

Spool holder cover

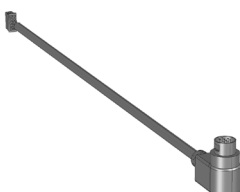
Plastic cover for the PCB in the NFC spool holder.



## 1726 NFC PCB Antenna

Spool holder NFC PCB

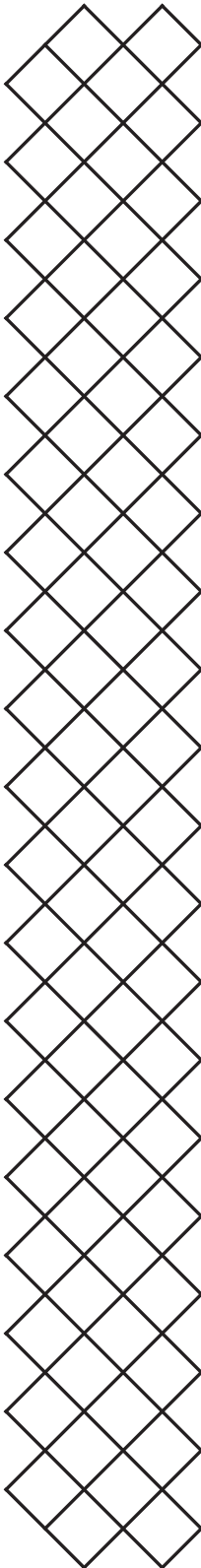
PCB which enables NFC detection in the spool holder.  
Does not include housing or cable.



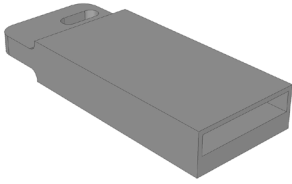
## 2515 NFC PCB Cable

Spool holder cable

Cable to connect the spool holder to the NFC port.  
Does not include housing or PCB.



# Accessories



## 2073 USB stick

USB stick

Save print files to USB for offline printing.



## 217599 STP ethernet cable L3000

Ethernet cable L3000

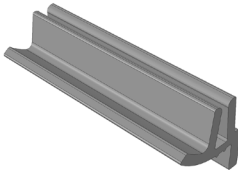
External Ethernet cable to set up a wired network connection, 3 meters long.



## 215718 Reelholder replacement plug

Spool holder gap cover

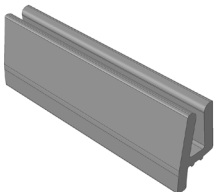
Optional for UltiMaker S7. Cover to close the gap for the spool holder, used in combination with the Material Station.



## 201936 Door Bumper Middle

Door seal middle

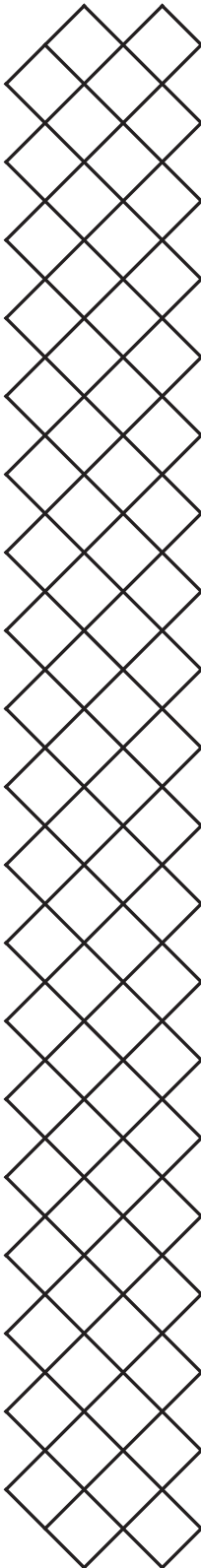
Rubber seal to secure the door, placed above the display module.



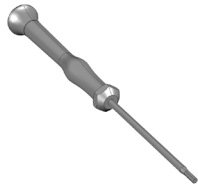
## 202135 Door Transport Bumper

Door seal

Rubber seal to secure the door during transport and repairs.



# Tools & maintenance



## 1227 Hex Screwdriver 2mm

Hex screwdriver 2 mm

Required screwdriver for most repairs on UltiMaker 3D printers.



## 1400 Hex Key Wrench 1.5mm

Hex key 1.5 mm

Small L shaped key, 1.5 mm. Optional for repairs, such as to remove the door.



## 1401 Hex Key Wrench 2

Hex key 2 mm

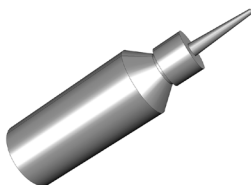
Small L shaped key, 2 mm. Optional for repairs, as alternative to 1227.



## 1402 Hex key Wrench 2.5

Hex key 2.5 mm

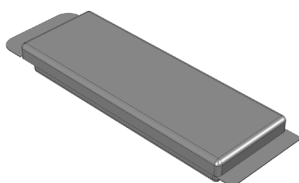
Small L shaped key, 2.5 mm. Optional for repairs, such as to open the Air Manager.



## 229770 Generic Machine Oil

Machine oil

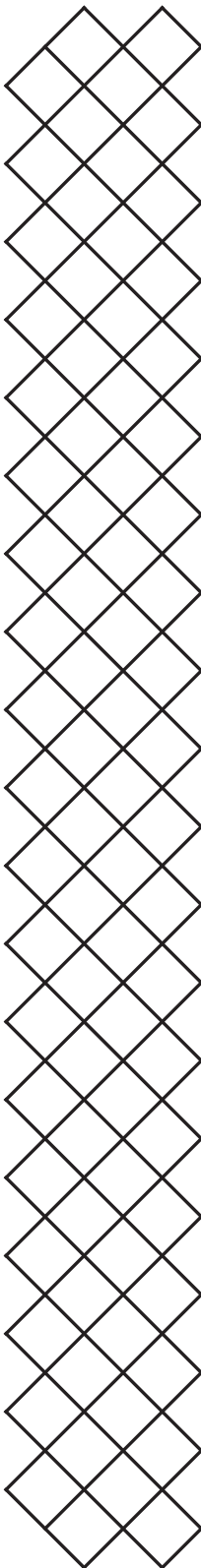
Bottle of machine oil used for various maintenance actions, such as lubricating the axles.



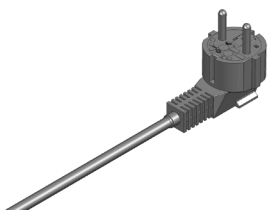
## 227551 Eurol grease Packaged

Eurol grease

Tube of grease used for various maintenance actions, such as lubricating the lead screw and feeder gear.



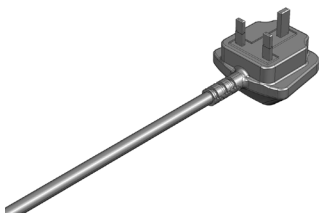
# Power cables



## **1805** Power Cable EU Type C13 CE

Power cable EU

Power cable type C13 with EU plug (type E/F)



## **1806** Power Cable UK Type C13 CE

Power cable UK

Power cable type C13 with UK plug (type G)



## **1807** Power Cable AU Type C13 CE

Power cable AU

Power cable type C13 with AU plug (type I)



## **1808** Power Cable US Type C13 CE

Power cable US

Power cable type C13 with US plug (type B)



## **1819** Power Cable JPN Type C13 PSE

Power cable JA

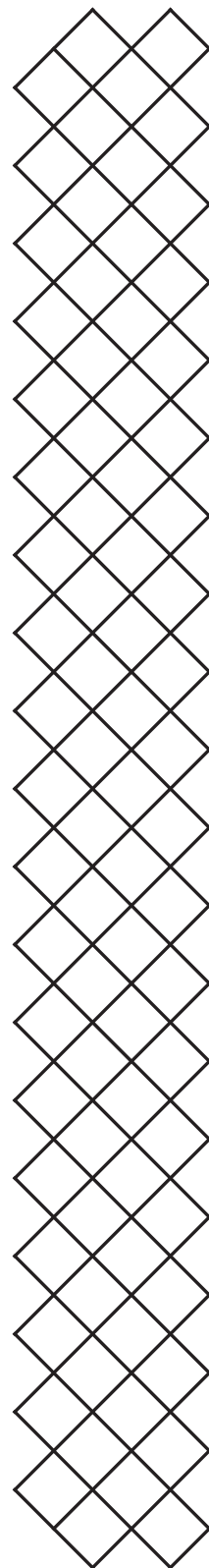
Power cable type C13 with JA plug (type B)



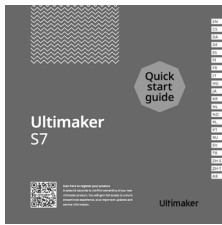
## **202091** Power Cable ARG Type C13 CE

Power cable AR

Power cable type C13 with AR plug (type I)



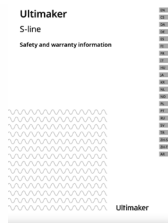
# Documents



## 234620 Quick Start Guide S7

Quick start guide S7

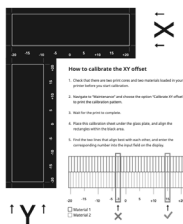
Instruction booklet to set up the UltiMaker S7 and Pro Bundle. Content available in 21 languages.



## 234621 Safety Book S-line

Safety and warranty information S-line

Booklet with safety, compliance, and warranty information. Content available in 21 languages.



## 211130 XY Calibration Sheet

XY calibration sheet

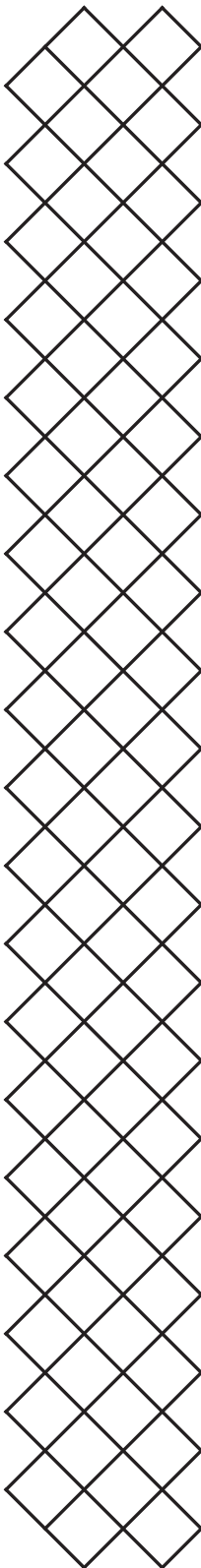
Paper sheet with instructions for the XY calibration. **Note:** Optimized for glass build plates, but can be used for the flexible build plate as a reference.



## 235038 Flex Plate Booklet

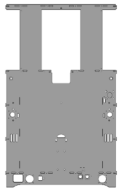
Flexible build plate maintenance instructions

Booklet with important maintenance instructions for the flexible build plate. Content available in 21 languages.





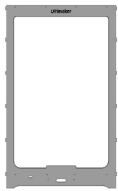
# Housing



## **234581** S7 Back Panel service assembly

Back panel S7

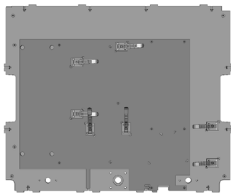
UltiMaker S7 back panel, including inserts and cable clips.



## **234583** S7 front panel service assembly

Front panel S7

UltiMaker S7 front panel, including inserts and magnets.



## **234585** S7 Bottom Panel service assembly

Bottom panel S7

UltiMaker S7 bottom panel assembly, including inserts, EMC plate, clips, etc.



## **234587** S7 Mid Panel service assembly

Mid panel S7

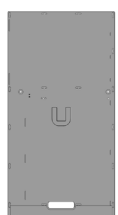
UltiMaker S7 mid panel, including inserts.



## **234588** S7 Top Panel service assembly

Top panel S7

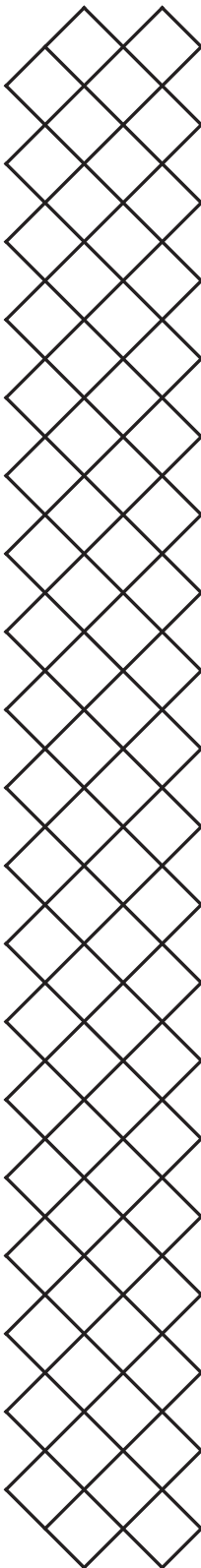
UltiMaker S7 top panel, including inserts.



## **234589** S7 Right Panel service assembly

Right panel S7

UltiMaker S7 right panel, including neoprene panel shielding.



# Housing



## 234590 S7 Left Panel service assembly

Left panel S7

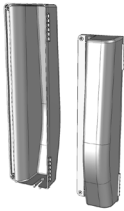
UltiMaker S7 left panel, including neoprene panel shielding.



## 234591 S7 Door service assembly

Glass door S7

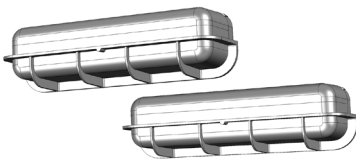
Large glass door with hinges and handle for the UltiMaker S7.



## 234592 S7 Bowden cover set service assembly

Bowden cover set

Set of both Bowden covers which are secured to the UltiMaker S7 back panel.



## 234593 S7 handle pack

Handle set

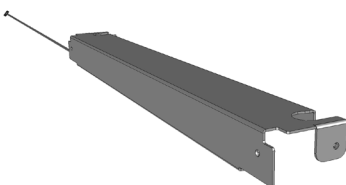
Set of 2 handles which are placed in the UltiMaker S7 side panels.



## 234594 S7 cable cover pack

Cable cover set

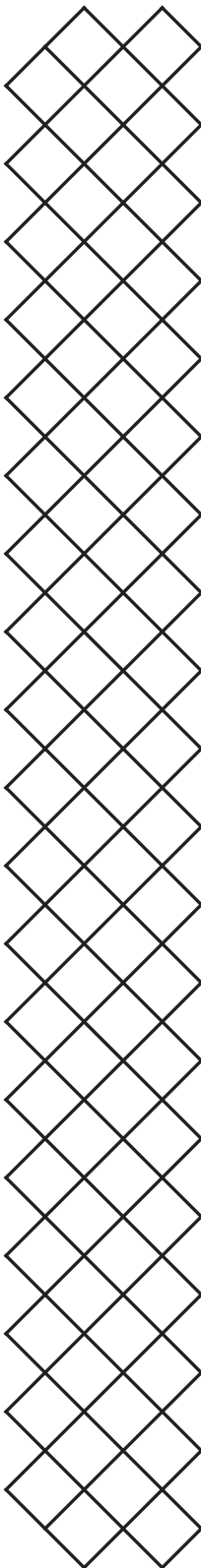
Set of 2 sheet metal covers for the camera and LED strip in the front right corner of the frame.



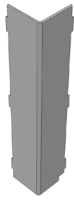
## 234595 S7 gantry cover service assembly

Gantry cover assembly

Metal gantry cover at the front of the printer, including LED strip. Also includes disposable ESD bracelet.



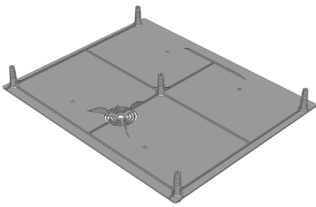
# Housing



## 1375 Cable Cover UMS5

Motor cover

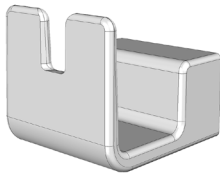
Plastic cover shielding the motors and cables.



## 210433 Bottom Plate S5

Bottom cover electronics

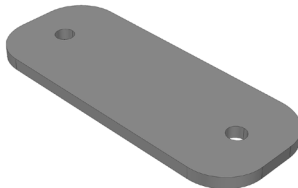
The cover at the bottom of the printer which shields the electronics and power supply.



## 2050 Nozzle switching bay

Switch bay

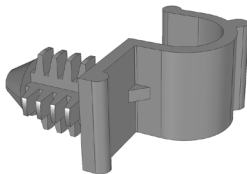
The switch bay enables lifting and lowering of the print core in slot 2. It is placed in the right panel.



## 2478 Z-Cap Metal

Z cap metal

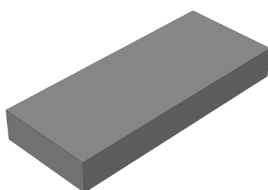
Metal cap to secure the Z axes.



## 2498 Cable Clip 6.4mm

Cable clip back panel

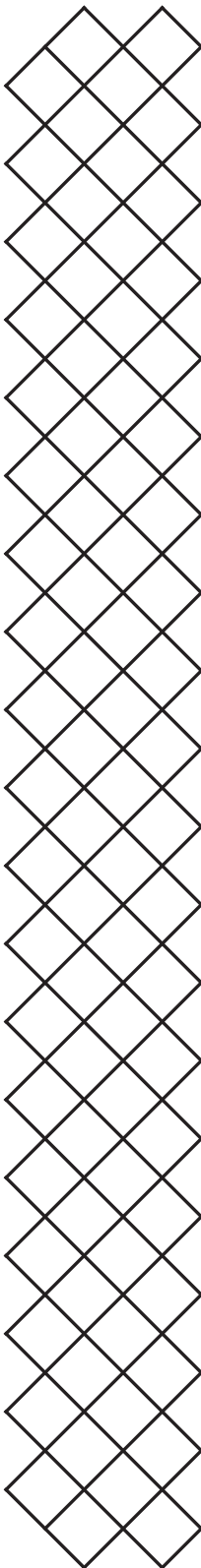
Cable clips used in the back panel to secure the Air Manager and spool holder cables.



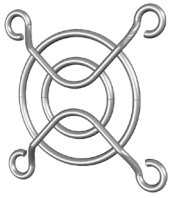
## 2501 Thermal Conductive Pad

Thermal conductive pad

Two thermal conductive pads (60x25x8) are placed between the mainboard and the frame.



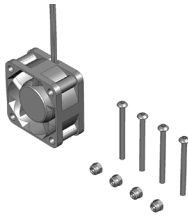
# Housing



## 2389 Fan Cover

System fan cover

Metal cover for the system fans.



## 227543 40x40x20 fan service set

System fan and bolt set

Set of 1 system fan including 4 M3x35 bolts and M3 lock nuts.  
**Note:** The older (200656) fans were secured with M4 bolts.



## 201267 LED Strip

LED strip

Single white LED strip including cable for the frame lighting.  
The strip is placed on the gantry cover.



## 230834 Frame bearing service pack

Frame bearing pack

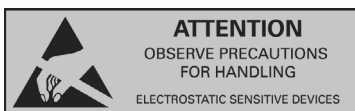
Set of 10 bearings. These bearings are placed in the frame to hold the X and Y axles.



## 1294 Keep Hands Clear Sticker

Warning sticker: Keep hands clear

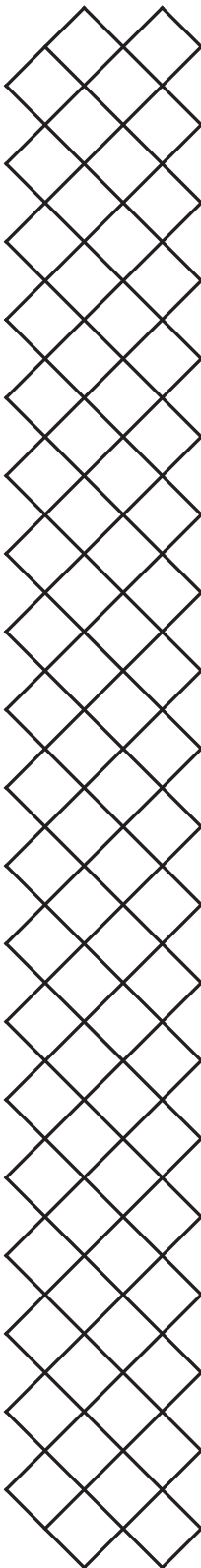
ISO 7010 W024 icon. This sticker is placed on the bottom panel, underneath the build plate.



## 1894 ESD Warning Sticker

Warning sticker: ESD

Optional for UltiMaker S7. Can be placed on the bottom cover to warn users.



# Gantry



## 1070 Y-Linear Shaft UMS5/r2

Y linear shaft

Frame Y axle for the UltiMaker S7 with a length of 401 mm and an 8 mm diameter.



## 1100 X-Linear Shaft UMS5/r2

X linear shaft

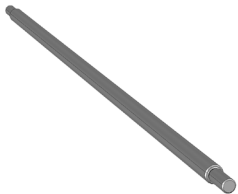
Frame X axle for the UltiMaker S7 with a length of 491 mm and an 8 mm diameter.



## 1372 Print Head Shaft X 10mm UMS5/r2

Print head shaft X

Print head shaft X for the UltiMaker S7 with a length of 476 mm and a 10 mm diameter.



## 1411 Print Head Shaft Y UMS5/r2

Print head shaft Y

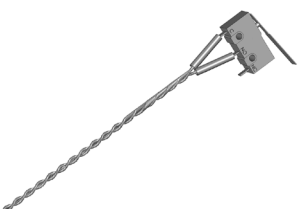
Print head shaft Y for the UltiMaker S7 with a length of 350 mm and an 8 mm diameter.



## 218024 Limit switch X L940

Limit switch X

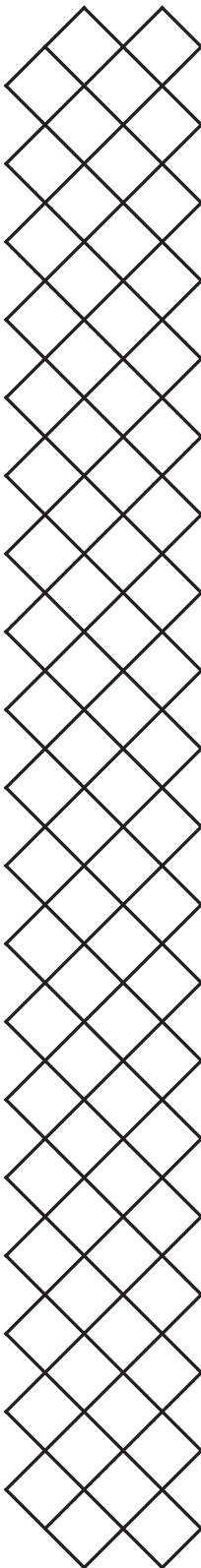
Limit switch for the X direction with 940 mm white cable and a blue shrink sleeve.



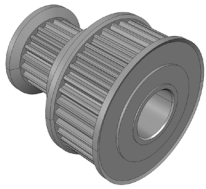
## 216068 Limit switch Y L710

Limit switch Y

Limit switch for the Y direction with 710 mm white cable and a red shrink sleeve.



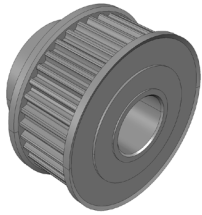
# Gantry



## **2303** Double Timing Pulley Assembly (Gear Ratio)

Double pulley 8 mm (gear ratio)

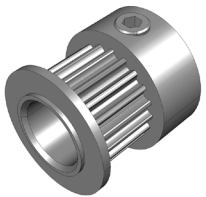
Double pulley with gear ratio including set screw, placed in the back left corner of the gantry (above Y motor).



## **2304** Pulley 8mm Assembly (Gear Ratio)

Pulley 8 mm (gear ratio)

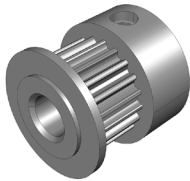
Pulley with gear ratio including set screw, placed in the back right corner of the gantry (above X motor).



## **9415** Pulley 8mm Assembly

Pulley 8 mm

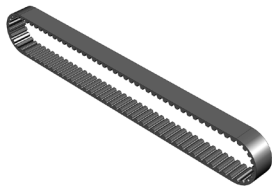
Pulley including set screw for the 8 mm frame axes.



## **9442** Pulley 5mm Assembly

Pulley 5 mm

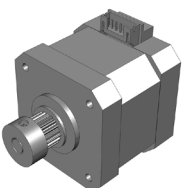
Pulley including set screw for the X and Y motors.



## **1758** Timing Belt S2M 200

Short belt L200

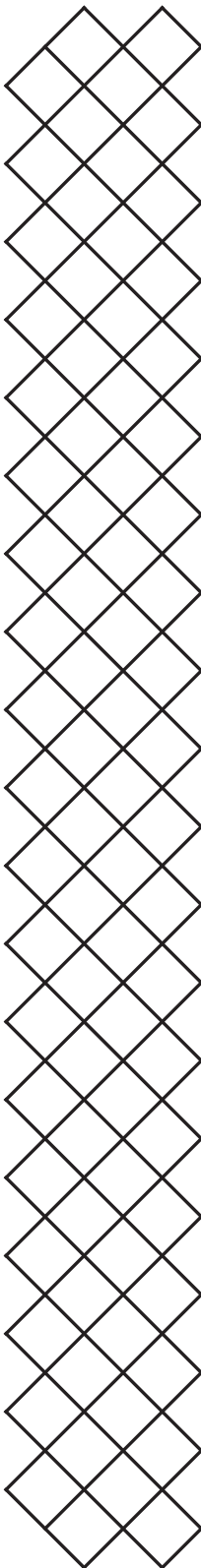
Short timing belt attached to the X and Y motors (225713).



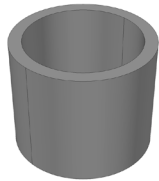
## **225713** XY Motor assembly S3/S5R2 service

XY motor assembly

Motor for X and Y directions. Includes the 5 mm pulley, does not include cable (214623 or 218272).



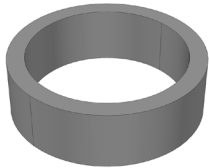
# Gantry



## 1174 Spacer 8.2x10x8

Spacer 8 mm

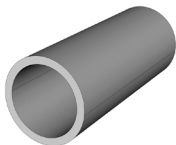
Pulley spacer for the gantry, 8 mm.  
Used on X axles (back-right, front-left, and front-right).



## 1175 Spacer 8.2x10x3

Spacer 3 mm

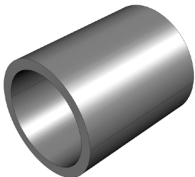
Pulley spacer for the gantry, 3 mm.  
Used on the Y axles (back-left, front-left, and front-right).



## 1178 Spacer 8,2x10x25

Spacer 25 mm

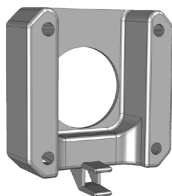
Pulley spacer for the gantry, 25 mm.  
Used on the Y axle, back-right corner.



## 219961 Spacer 8.2×10×12

Spacer 12 mm

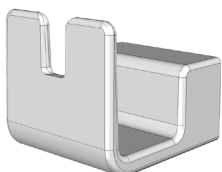
Pulley spacer for the gantry, 12 mm.  
Used on the Y axle, back-right corner.



## 208133 Spacer stepper

Motor spacer

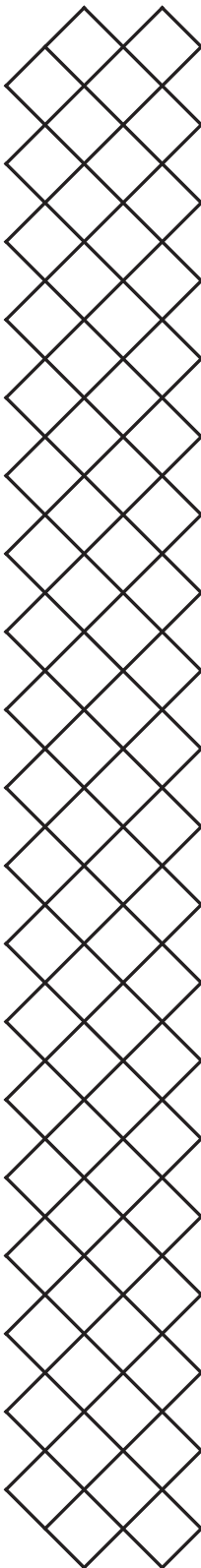
Plastic spacer to secure the X and Y motors (225713) to the frame.



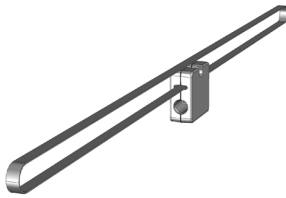
## 2050 Nozzle switching bay

Switch bay

The switch bay enables lifting and lowering of the print core in slot 2.  
It is placed in the right panel.



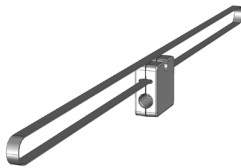
# Gantry



## 225581 Sliding block 920 service

Sliding block assembly 920

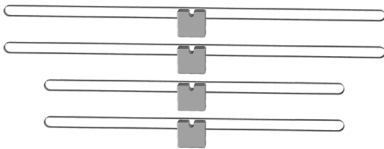
Sliding block assembly with 920 mm belt, placed along the front and back and secures the Y print head shaft.



## 225582 Sliding block 714 service

Sliding block assembly 714

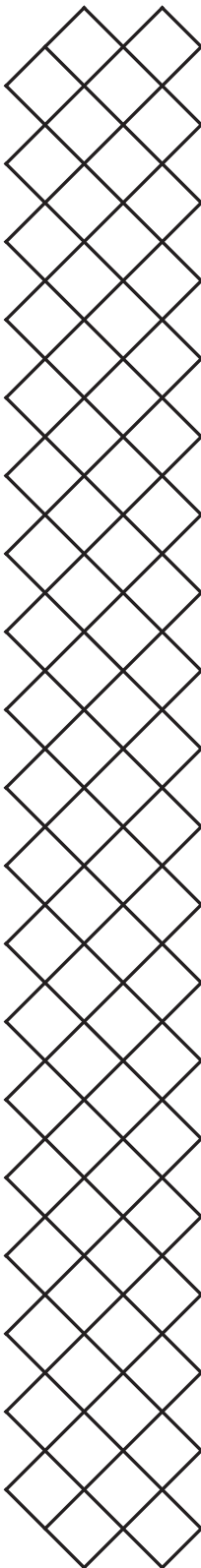
Sliding block assembly with 714 mm belt, placed along the left and right and secures the X print head shaft.



## 232037 Sliding block pack (D-Shape) - Ultimaker S5

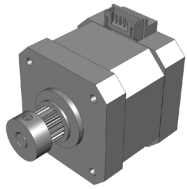
Sliding block pack

Set of 4 sliding block assemblies (2x 225581, 2x 225582) for the UltiMaker S7.





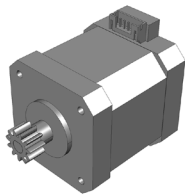
# Motors



## 225713 XY Motor assembly S3/S5R2 service

XY motor assembly

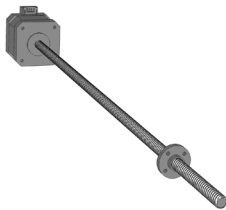
Motor for X and Y directions. Includes the 5 mm pulley (9442), does not include cable (214623 or 218272).



## 225715 Feeder motor assembly S3/S5 service

Feeder motor assembly

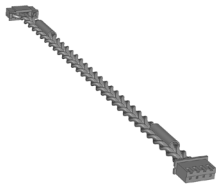
Motor for the left and right feeders. Includes the feeder gear, does not include cable (.).



## 203828 Z Motor With Nut

Z motor with lead nut

Z motor with trapezoidal lead screw. Includes lead nut (1187), does not include cable (216073).



## 216073 Stepper motor cable L160

Motor cable L160

Motor cable with length 160 mm. Used for the Z motor (203828).



## 214620 Stepper motor cable L490

Motor cable L490

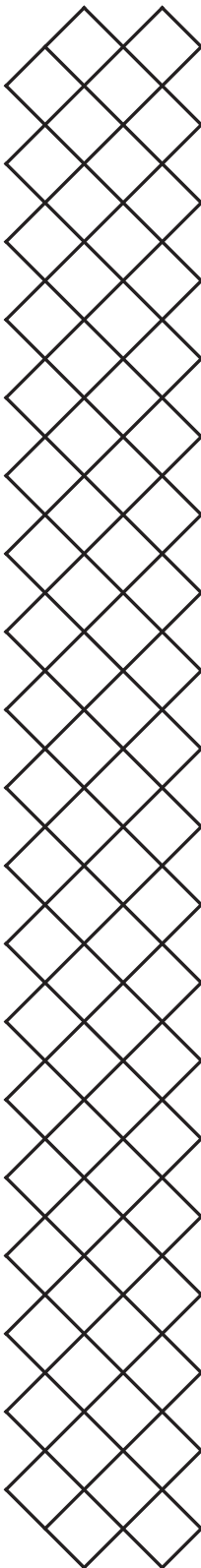
Motor cable with length 490 mm. Used for the right feeder (225715).



## 214623 Stepper motor cable L670

Motor cable L670

Motor cable with length 670 mm. Used for the left feeder (225715) and X motor (225713).



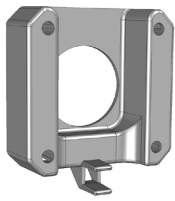
# Motors



## 218272 Stepper motor cable L850

Motor cable L850

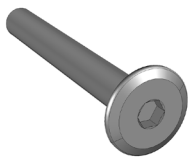
Motor cable with length 850 mm. Used for the Y motor (225713).



## 208133 Spacer stepper

Motor spacer

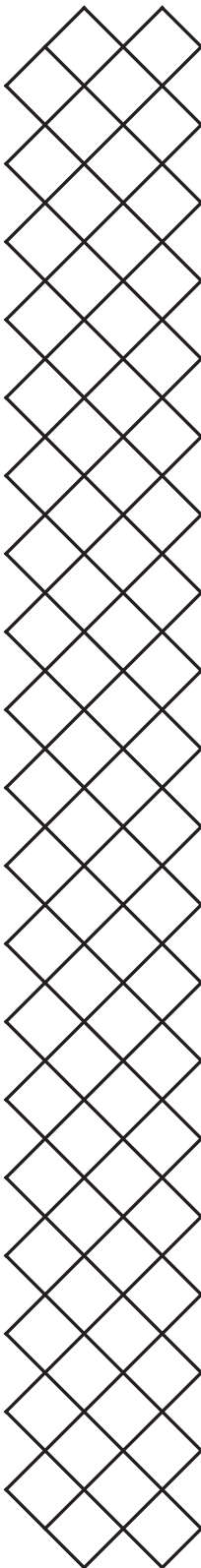
Plastic spacer to secure the X and Y motors (225713) to the frame.



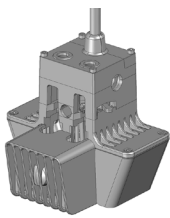
## 212958 Flat head M3X24,2

Flat head M3x24.2 bolt

Hexagon socket (2 mm) flat head bolt M3x24.2, used to secure the X and Y motors (225713).



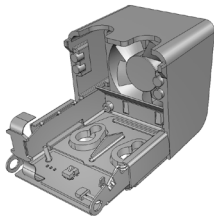
# Print head



## **234570** S-line inductive printhead service assembly

Print head assembly (inductive)

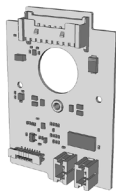
Complete print head assembly with inductive sensor.



## **234572** Inductive front fan bracket service assembly

Front fan bracket assembly (inductive)

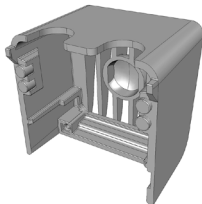
Complete print head front fan bracket assembly, including fan, fan cover, inductive sensor board, and nozzle cover. Also includes installation tool.



## **234574** Printhead PCBA inductive sensor service assy

Print head PCB (inductive)

Print head PCB with inductive sensor.



## **234577** S7 front fan cover service assembly

Front fan cover

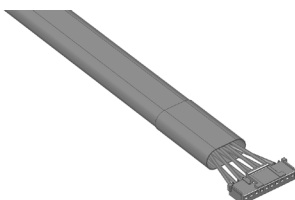
Plastic front fan cover including magnets.



## **227177** Bowden pack L850 with collets & clips for service

Bowden pack L850

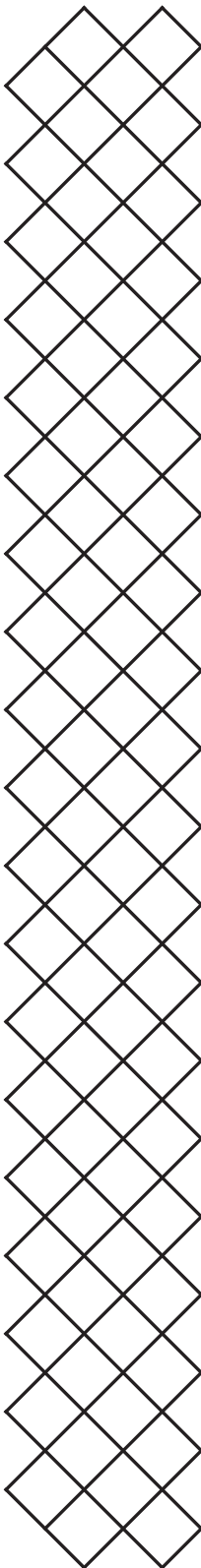
Set of 1 Bowden tube (length 850 mm), 2 tube coupling collets (1069), 1 clamp clip white (2137), 1 clamp clip black (230605).



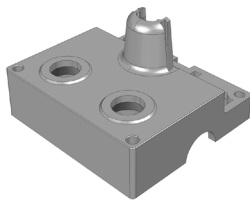
## **1384** Print Head Cable

Print head cable

This cable ensures communication between the print head and the main electronics.



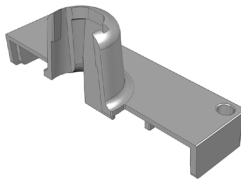
# Print head



## 219260 Bearing housing top

Print head housing top

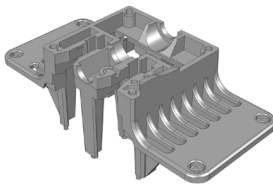
Top and front part of the print head housing.



## 219261 Print head cable cover

Print head cable cover

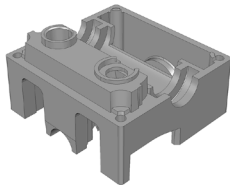
Top and back part of the print head housing.



## 219264 Header bracket

Header bracket

Bottom part of the print head housing to which the side fan bracket is secured.



## 232203 Bearing housing middle

Print head housing middle

Middle part of the print head housing.



## 1408 Linear Bearing LMK10L

Print head bearing X

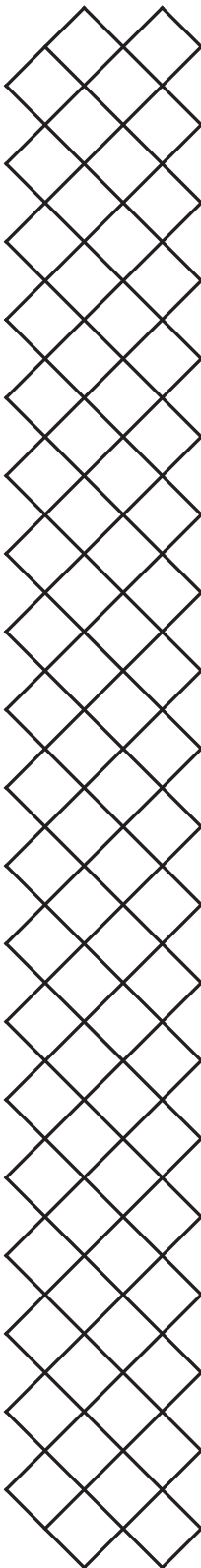
Linear bearing with 10 mm inner diameter, used in the X direction in the print head.



## 1409 Linear Bearing LMK8L

Print head bearing Y

Linear bearing with 8 mm inner diameter, used in the Y direction in the print head.



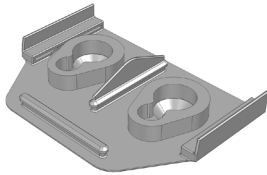
# Print head



## 203639 Nozzle Seal Adapter S

Metal plate nozzle cover

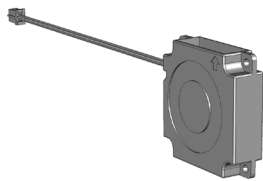
Metal plate placed inside the front fan bracket to secure the nozzle cover.



## 203641 Nozzle Seal S

Nozzle cover

Silicone nozzle cover to shield the print cores and prevent against backflow of material. This is a consumable item; replacement advised after 400 hours.



## 2135 Radial Fan 35x35x10

Side fan (radial)

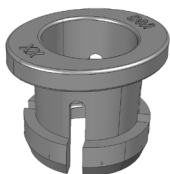
Radial fans in the side fan bracket which cool the model during printing.



## 234578 Axial fan for inductive printhead

Front fan (axial, inductive)

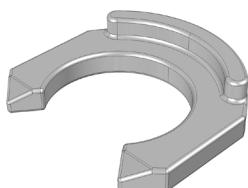
Axial (front) fan which cools the print cores during printing. Connects to the inductive sensor board.



## 1069 Tube Coupling Collet

Tube coupling collet

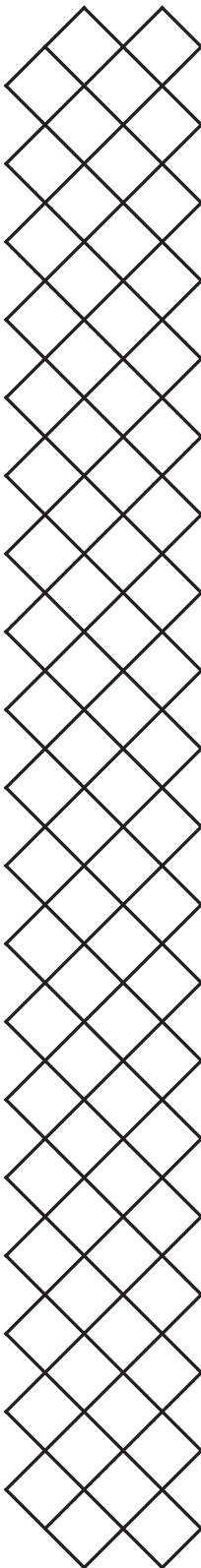
Collet with small metal blades to keep the Bowden tubes in position in the feeders and print head.



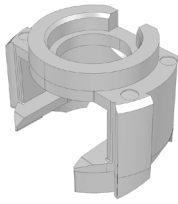
## 2137 Clamp Clip White

Clamp clip white

Small plastic clip placed around the tube coupling collet (1069) on the print head to secure the Bowden tube in place.



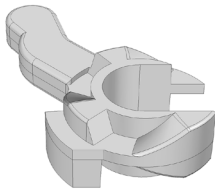
# Print head



## 1407 Lifting Ring

Lifting ring top

Top part of the lift switch mechanism inside the print head.



## 2117 Lifting Switch

Lifting switch

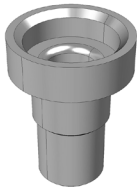
Middle part of the lift switch mechanism inside the print head.



## 2130 Lifting Ring Spring DR1300

Lifting ring spring

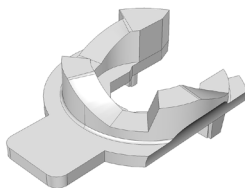
Spring above the lift switch mechanism inside the print head.



## 2131 Print Head Bowden Tube Exit

Print head filament guide

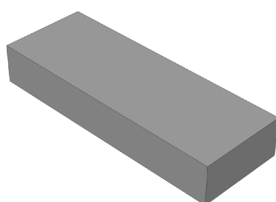
Metal part above the lift switch mechanism inside the print head.



## 2138 Lifting Ring Bottom

Lifting ring bottom

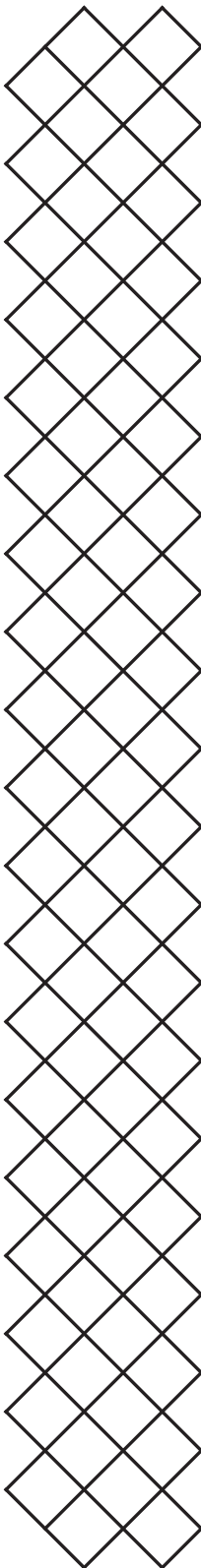
Bottom part of the lift switch mechanism inside the print head.



## 2158 Foam Tape

Foam tape

Small piece of foam tape between the radial fans and header bracket.



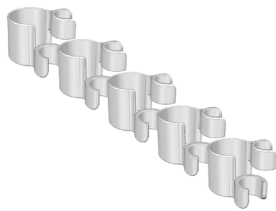
# Print head



## 2069 Header Cable Clip

Print head cable clip

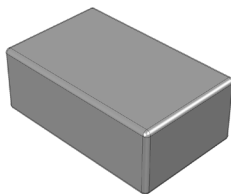
Clips to secure the print head cable to the Bowden tubes.



## 234579 Header cable clip pack

Print head cable clip pack

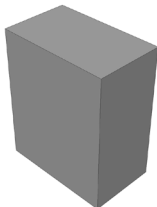
Set of 5 print head cable clips to secure the print head cable to the Bowden tubes.



## 2136 Hot End Magnet

Print core magnet

Square magnets inside the print head housing placed behind the print cores.



## 2163 Magnetic Field Conductor

Magnetic field conductor

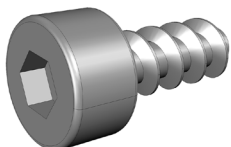
Magnetic field conductors placed behind the print core magnets inside the print head housing.



## 205923 Front Fan Magnet

Fan bracket magnet

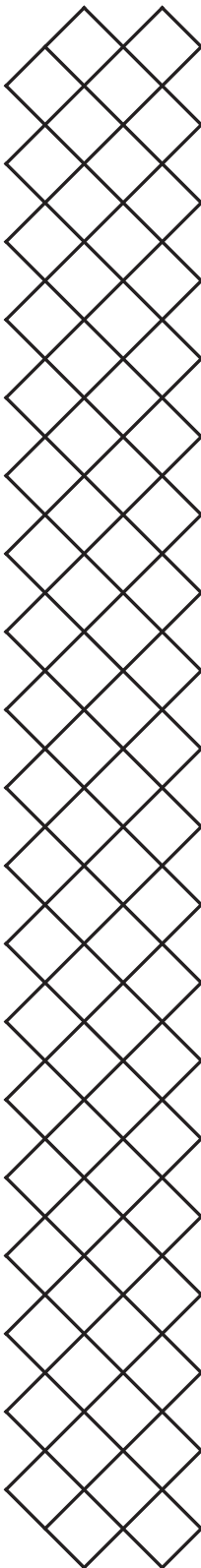
Magnets that enable closing the front fan bracket.



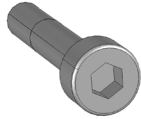
## 2152 Hex Socket Head Remform Screw 2.5 x 6

M2.5x6 screw

Screws used in the print head to secure the side fan bracket and the front fan cover.



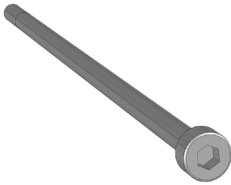
# Print head



**2142** DIN 912 M2.5x8

M2.5x8 bolt

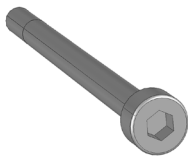
Bolt to secure the print head PCB to the print head housing.



**2144** DIN 912 M2.5x75

M2.5x75 bolt

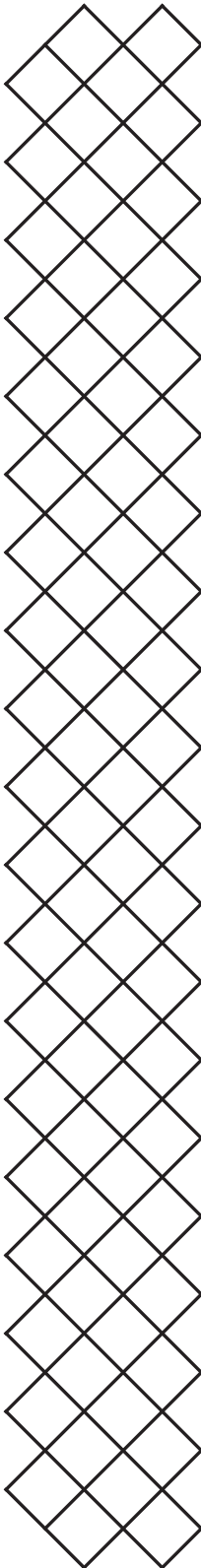
Long bolt to secure the print head housing.



**2153** DIN 912 M2.5x35

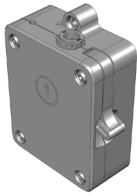
M2.5x35 bolt

Bolt to secure the metal bottom plate to the print head housing.





# Feeder



## 225720 S-line feeder left (fine knurl) service

Feeder left (fine knurl)

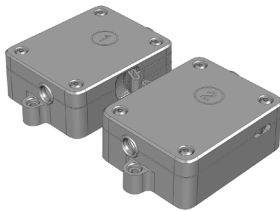
Complete feeder assembly (left, 1) including flow sensor. The knurled wheel has a fine pattern.



## 225719 S-line feeder right (fine knurl) service

Feeder right (fine knurl)

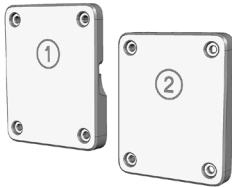
Complete feeder assembly (right, 2) including flow sensor. The knurled wheel has a fine pattern.



## 225984 Fine knurl feeder kit

Fine knurl feeder kit

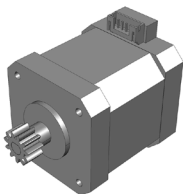
Set of 2 S-line feeders with fine knurl pattern.



## 234924 Feeder Casing Front S-Line Service Pack

Feeder casing set

Front part of the feeder housing including bearing for both feeders.



## 225715 Feeder motor assembly S3/S5 service

Feeder motor assembly

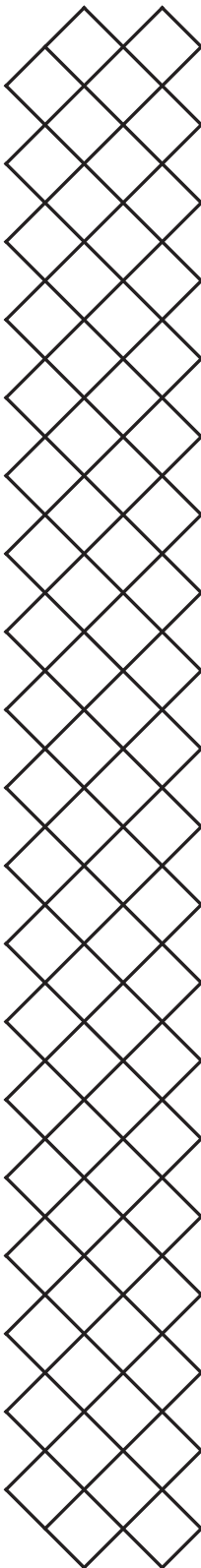
Motor for the left and right feeders. Includes the feeder gear, does not include cable (214620 or 214623).



## 227177 Bowden pack L850 with collets & clips for service

Bowden pack L850

Set of 1 Bowden tube (length 850 mm), 2 tube coupling collets, 1 clamp clip white, 1 clamp clip black.



# Feeder



## 217422 Filament detection cable L630

Flow sensor cable L630

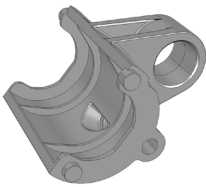
Cable that connects the flow sensor cable (right, feeder 2) to the main electronics.



## 218035 Filament detection cable L800

Flow sensor cable L800

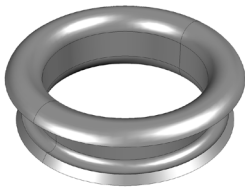
Cable that connects the flow sensor cable (left, feeder 1) to the main electronics.



## 2235 Flow Sensor Casing

Flow sensor housing

Plastic part inside the feeder to which the flow sensor is secured.



## 2209 Feeder Ring

Feeder ring

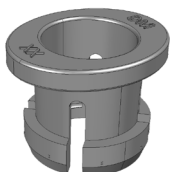
Metal ring at the bottom of the feeder to help guide the material, or to insert the Material Station Bowden tubes.



## 1788 Spring 8x22mm

Spring 8x22

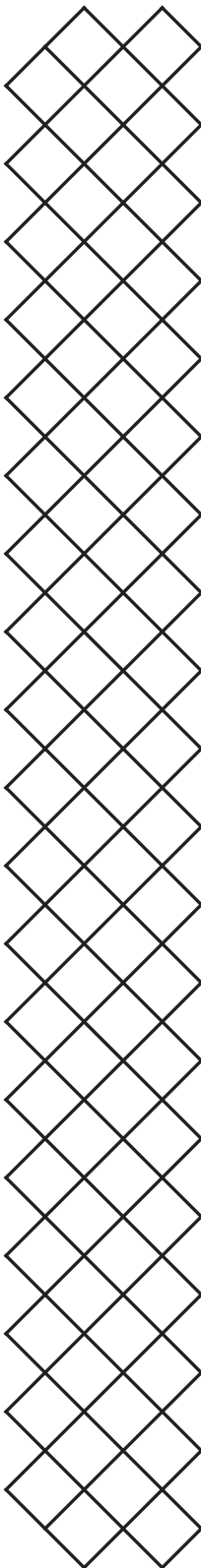
Spring inside the feeder to enable the tension and the lever.



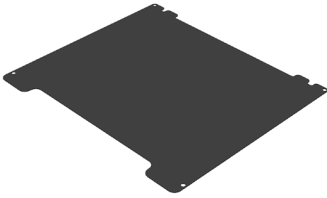
## 1069 Tube Coupling Collet

Tube coupling collet

Collet with small metal blades to keep the Bowden tubes in position in the feeders and print head.



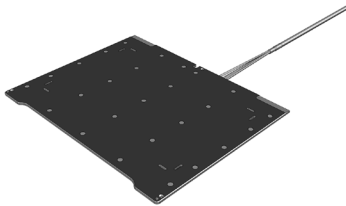
# Z-stage



## 234179 Buildplate Packaged

Flexible build plate

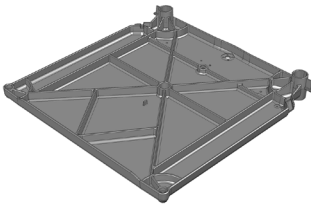
The flexible build plate is the print surface for the UltiMaker S7. Includes maintenance instructions.



## 234604 S7 Magnetic build plate service assembly

Magnetic build plate assembly

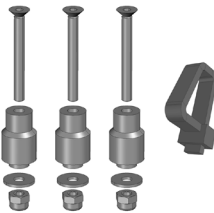
Assembly of the magnetic build plate including magnets and heater mat. Also includes cable tie and disposable ESD bracelet.



## 234611 S7 Cast bed service pack

Cast base plate S7

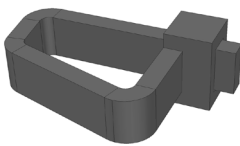
Cast base plate of the Z stage, including a cable tie for the heated bed cable.



## 234613 S7 buildplate mounting set

Build plate mounting set S7

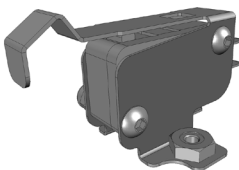
Set of (3x) nuts, bolts, and washers to mount the build plate, including a cable tie.



## 2494 Tie Wrap Heat Resistant

Heat resistant cable tie

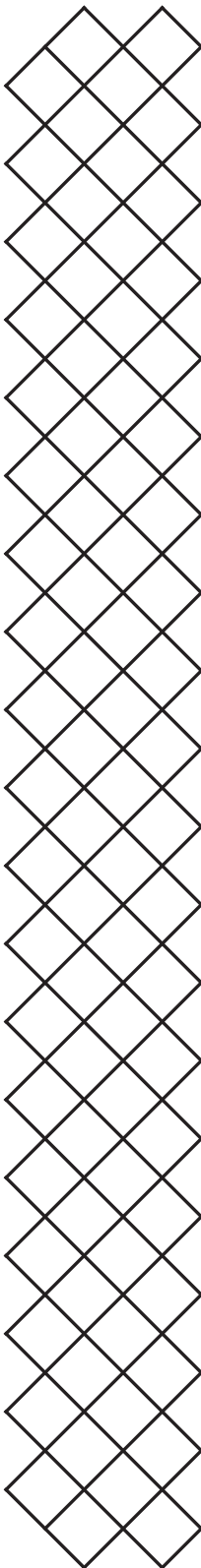
Cable tie with heat resistance, to secure the heated bed cable to the base plate.



## 234606 Flexplate sensor service assembly

Build plate detection sensor

Sensor at the back of the build plate to detect the presence of the flexible build plate.



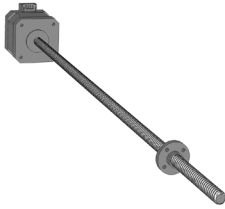
# Z-stage



## 1120 Z-Linear Shaft UMS5/r2

Z linear shaft

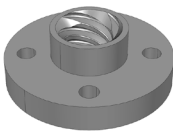
Linear Z axle for the UltiMaker S7 with a length of 451 mm and a 12 mm diameter.



## 203828 Z Motor With Nut

Z motor with lead nut

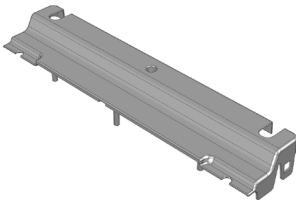
Z motor with trapezoidal lead screw. Includes lead nut (1187), does not include cable (216073).



## 1187 Trapezoidal Lead Nut

Trapezoidal lead nut

Lead nut fixed on the base plate, which matches the Z motor's trapezoidal lead screw to enable vertical motion of the Z stage. Also included in 203828.



## 234608 S7 print table back cover service assembly

Print table back cover

Plastic cover over the bearings and cables at the back of the Z stage.



## 1430 Linear Bearing Bed

Z linear bearing

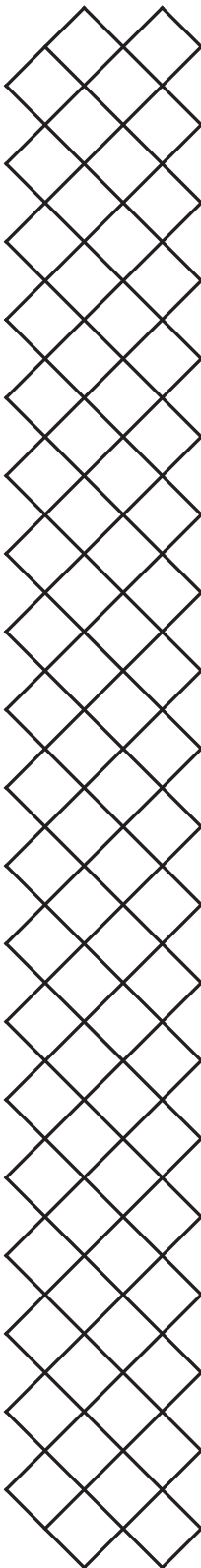
Linear bearing with 12 mm inner diameter, used in the Z stage.



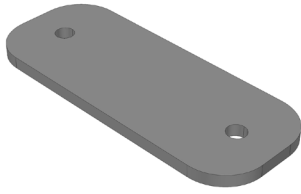
## 234610 S-line linear bearing service pack

Z bearing pack

Set of Z bearings with retaining rings.



# Z-stage



## 2478 Z-Cap Metal

Z cap metal

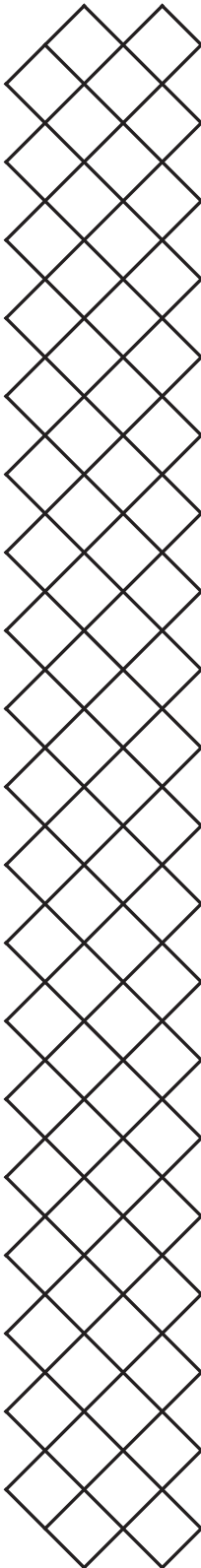
Metal cap to secure the Z axles.



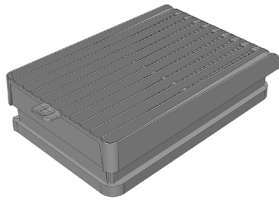
## 1326 Warning Sticker

Warning sticker: Hot surface

ISO 7010 W017 icon. This sticker is placed on the build plate.



# Air Manager



## 226752 Air Manager filter

Air Manager filter

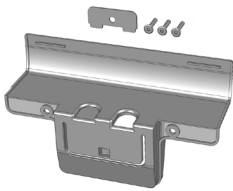
Filter for the Air Manager. This is a consumable item; replacement advised after 1500 hours.



## 228906 Air Manager Fan Service

Air Manager fan

Large 80x80 fan located inside the Air Manager's filter housing.



## 234596 S7 Air Manager mounting kit

Air Manager mounting kit

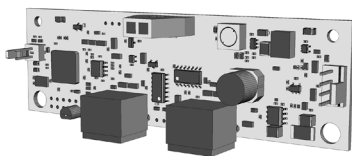
Set of the S7 Air Manager mounting bracket, alignment plate, and flat head bolts.



## 234597 S-line filter housing service assembly

Filter housing

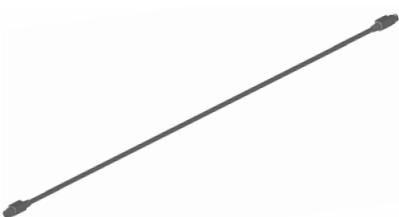
Filter housing assembly including fan and PCB for the Air Manager.



## 235001 Air Manager PCB Service Assy

Air Manager PCB

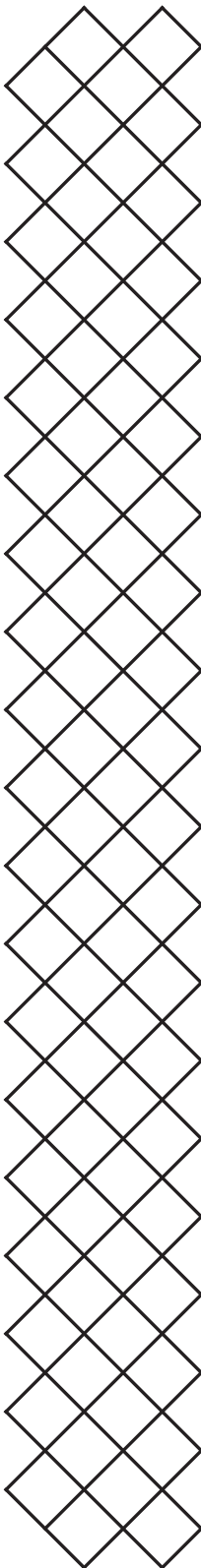
Electronics in the Air Manager enabling communication, fan control, and filter detection.



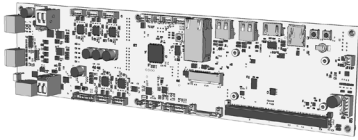
## 212897 UM Bus cable L610 Straight/Straight

UMB cable L610

UMB cable connecting the Air Manager to the printer's main electronics (or to the Material Station).



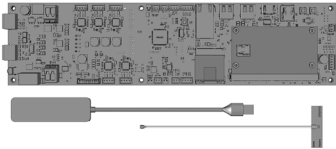
# Electronics



## 234488 SMARC Mainboard 4.3 Service Packed

S-line mainboard 4.3

Mainboard for S-line printers. Does not include SOM or Wi-Fi module.



## 234906 S-line Electronics + Dongle Service Assembly

S-line electronics assembly + dongle

Complete S-line electronics (mainboard, SOM, Wi-Fi module). Also includes Wi-Fi antenna and USB dongle.

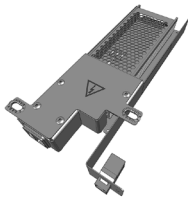
**Note:** Requires provisioning after installation.



## 234908 S-Line Wi-Fi Antenna Service V2

Wi-Fi antenna

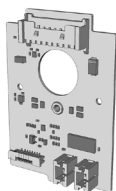
Wi-Fi antenna. Compatible with UltiMaker S7 and the latest version of S-line electronics.



## 234598 S7 Power supply module service assy

Power supply assembly

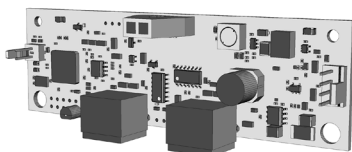
Complete power supply assembly including power entry and metal bracket.



## 234574 Printhead PCBA inductive sensor service assy

Print head PCB (inductive)

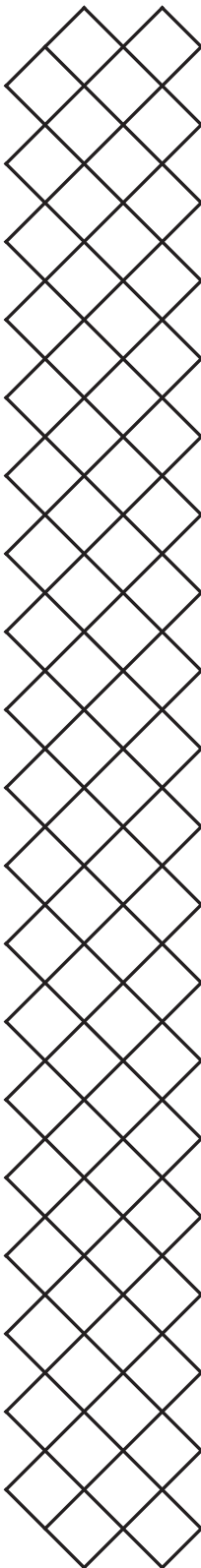
Print head PCB with inductive sensor.



## 235001 Air Manager PCB Service Assy

Air Manager PCB

Electronics in the Air Manager enabling communication, fan control, and filter detection.



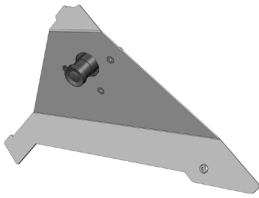
# Electronics



## **227677** Display module service

Display module

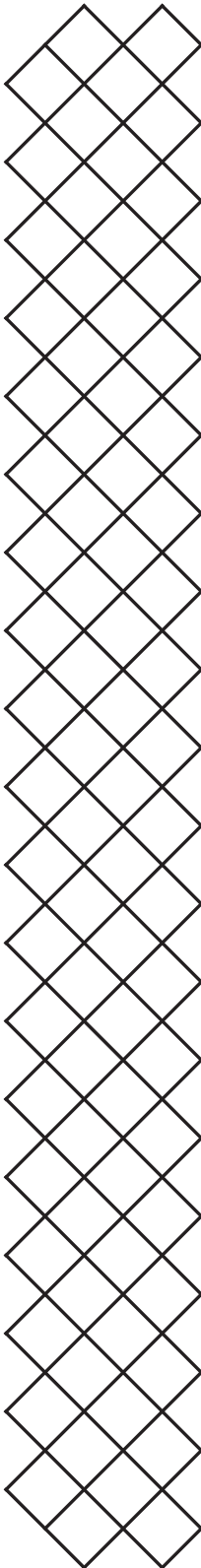
Complete display module assembly for S-line printers.



## **234599** S7 Camera module service assembly

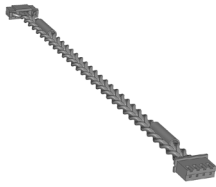
Camera assembly S7

Camera module assembly for the UltiMaker S7.





# Cables



## 216073 Stepper motor cable L160

Motor cable L160

Motor cable with length 160 mm. Used for the Z motor (203828).



## 214620 Stepper motor cable L490

Motor cable L490

Motor cable with length 490 mm. Used for the right feeder (225715).



## 214623 Stepper motor cable L670

Motor cable L670

Motor cable with length 670 mm. Used for the left feeder (225715) and X motor (225713).



## 218272 Stepper motor cable L850

Motor cable L850

Motor cable with length 850 mm. Used for the Y motor (225713).



## 217422 Filament detection cable L630

Flow sensor cable L630

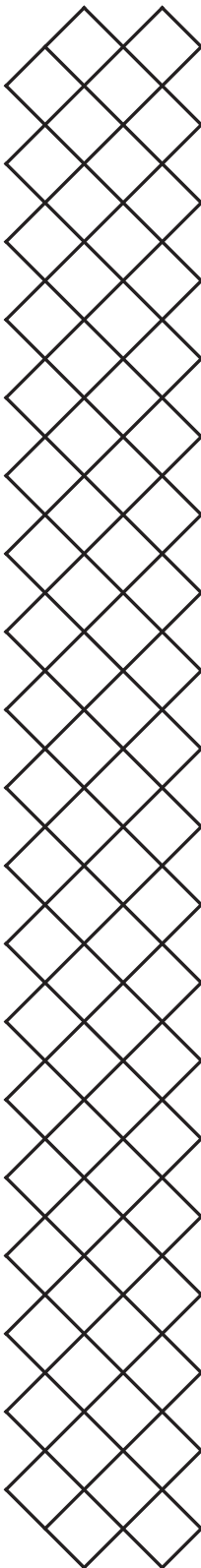
Cable that connects the flow sensor cable (right, feeder 2) to the main electronics.



## 218035 Filament detection cable L800

Flow sensor cable L800

Cable that connects the flow sensor cable (left, feeder 1) to the main electronics.



# Cables



## 214727 24V Cable assembly

24V cable

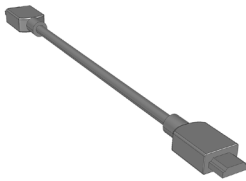
24V cable connecting the power supply to the mainboard.



## 234018 STP Ethernet Cable L300

Ethernet cable internal

Cable that connects the Ethernet port in the power supply to the main electronics (currently via USB dongle).



## 216700 HDMI cable full shield

HDMI cable

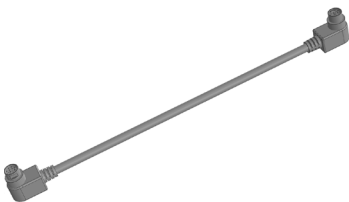
HDMI cable that connects the display module to the main electronics.



## 215569 USB Extension panel mount cable

USB extension cable

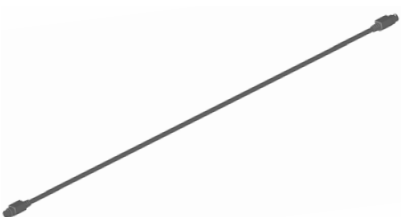
Cable that connects the USB port to the main electronics.



## 214855 UM Bus cable L200 Angled/Angled

UMB cable L200

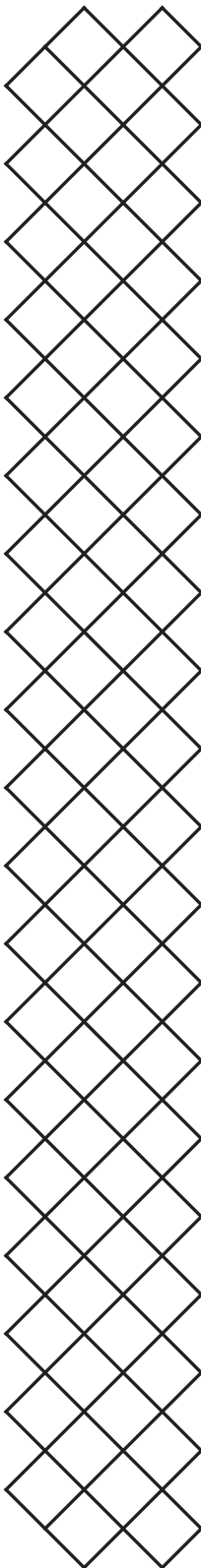
Optional for UltiMaker S7. UMB cable connecting the Material Station to the printer.



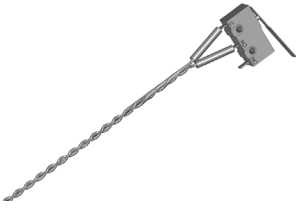
## 212897 UM Bus cable L610 Straight/Straight

UMB cable L610

UMB cable connecting the Air Manager to the printer's main electronics (or to the Material Station).



# Cables



## **218024** Limit switch X L940

Limit switch X

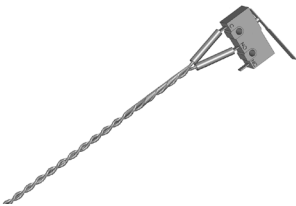
Limit switch for the X direction with 940 mm white cable and a blue shrink sleeve.



## **216068** Limit switch Y L710

Limit switch Y

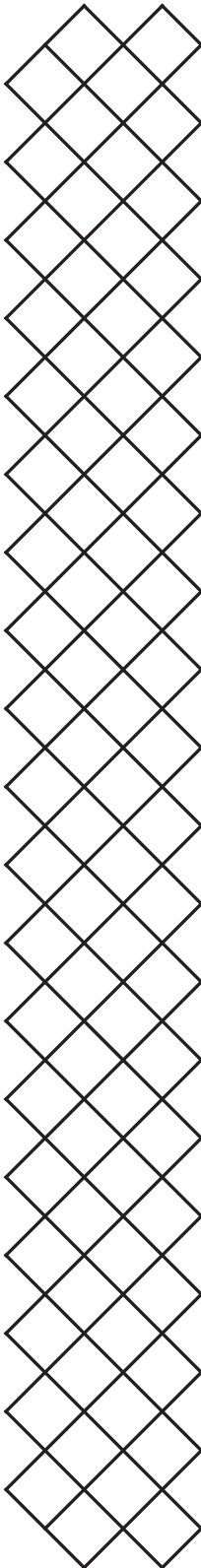
Limit switch for the Y direction with 710 mm white cable and a red shrink sleeve.



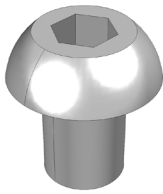
## **232183** Limit switch Z L200

Limit switch Z

Limit switch for the Z direction with 200 mm white cable and a black shrink sleeve.



# Nuts & bolts



**1348** ISO 7380 M3x4 A2

M3x4 bolt

Hexagon socket (2 mm) button head bolt M3x4



**1292** DIN 7380 M3x6

M3x6 bolt

Hexagon socket (2 mm) button head bolt M3x6



**1200** ISO 7380 M3x8

M3x8 bolt

Hexagon socket (2 mm) button head bolt M3x8



**1202** ISO 7380 M3x10

M3x10 bolt

Hexagon socket (2 mm) button head bolt M3x10



**1203** ISO 7380 M3x12

M3x12 bolt

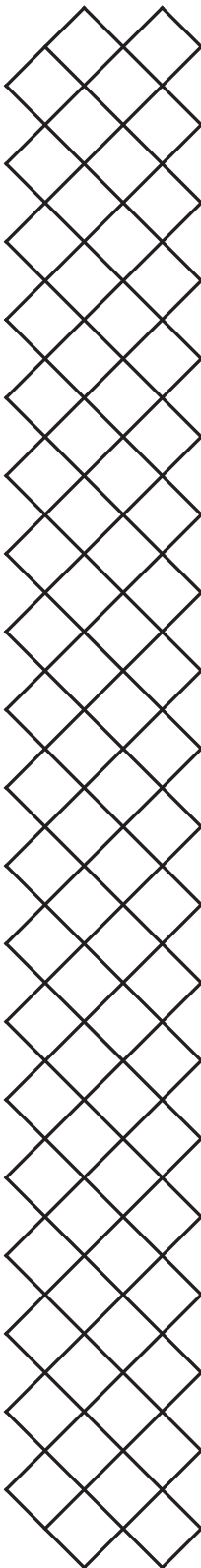
Hexagon socket (2 mm) button head bolt M3x12



**1205** ISO 7380 M3x14

M3x14 bolt

Hexagon socket (2 mm) button head bolt M3x14



# Nuts & bolts



**1204** ISO 7380 M3x16

M3x16 bolt

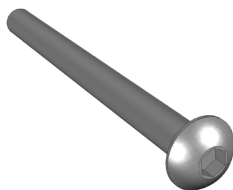
Hexagon socket (2 mm) button head bolt M3x16



**1206** ISO 7380 M3x20

M3x20 bolt

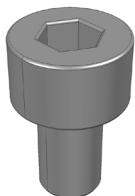
Hexagon socket (2 mm) button head bolt M3x20



**203687** ISO 7380 M3X35

M3x35 bolt

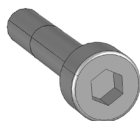
Hexagon socket (2 mm) button head bolt M3x35.  
Used for the system fans.



**2037** DIN 912 M2.5x4

M2.5x4 bolt

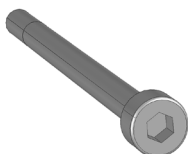
Hexagon socket (2 mm) cap head bolt M2.5x4.  
Used in the camera.



**2142** DIN 912 M2.5x8

M2.5x8 bolt

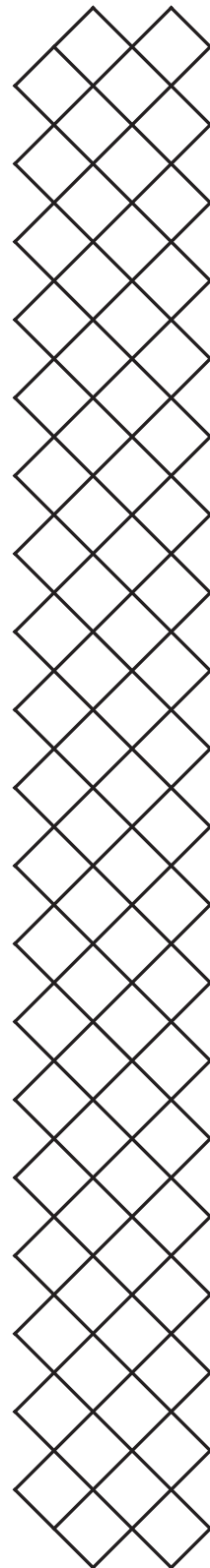
Bolt to secure the print head PCB to the print head housing.



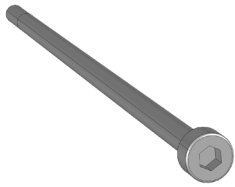
**2153** DIN 912 M2.5x35

M2.5x35 bolt

Bolt to secure the metal bottom plate to the print head housing.



# Nuts & bolts



## 2144 DIN 912 M2.5x75

M2.5x75 bolt

Long bolt to secure the print head housing.



## 201321 Flat Head M3X10

friendly name

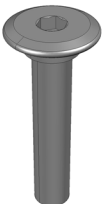
Hexagon socket (2 mm) flat head bolt M3x10, used in the frame and visible from the outside.



## 201390 Flat head M3X12

Flat head M3x12 bolt

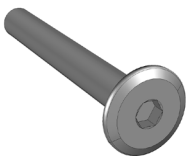
Hexagon socket (2 mm) flat head bolt M3x12, used in the frame and visible from the outside.



## 201205 Flat head M3X16

Flat head M3x16 bolt

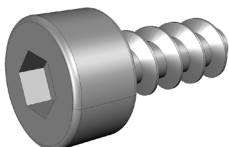
Hexagon socket (2 mm) flat head bolt M3x16, used in the frame and visible from the outside.



## 212958 Flat head M3X24,2

Flat head M3x24.2 bolt

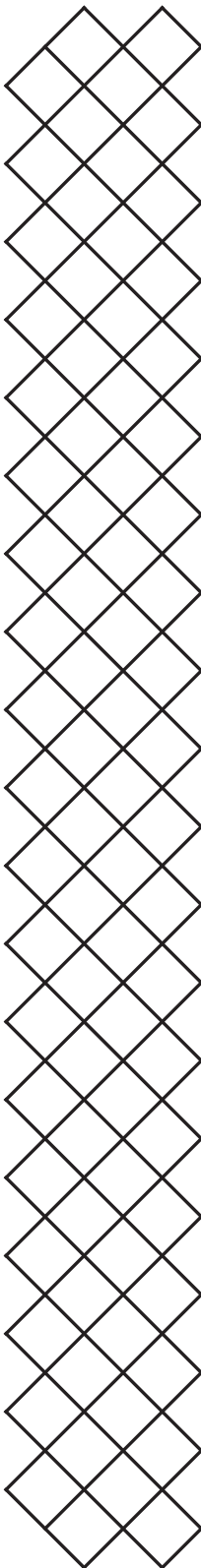
Hexagon socket (2 mm) flat head bolt M3x24.2, used to secure the X and Y motors.



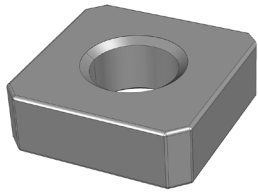
## 2152 Hex Socket Head Remform Screw 2.5 x 6

M2.5x6 screw

Screws used in the print head to secure the side fan bracket and the front fan cover.



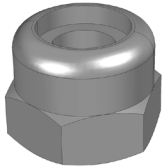
# Nuts & bolts



## 1213 DIN 562 Square Nut M3 A2

Square nut M3

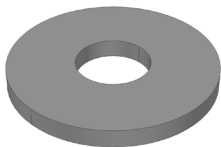
Square M3 nut used in the UltiMaker S7 frame.



## 1214 Prevailing Torque Nut M3 ISO 7040

Lock nut M3

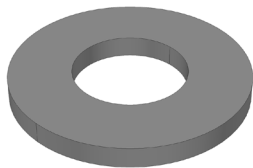
Hexagon M3 lock nut with plastic insert, used on e.g. the build plate.



## 1201 Washer M3

Washer M3

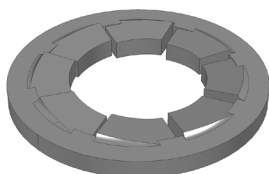
Washer M3. Used in the Z stage assembly.



## 201468 Nylon Washer M4

Washer M4 Nylon

Nylon M4 washer used in the door hinge assembly.



## 217840 M3 serrated lock washer

M3 serrated lock washer

Serrated washer used to secure the display module to the frame.

