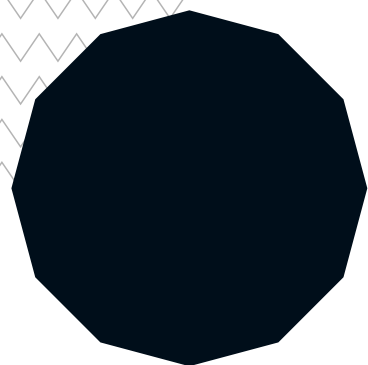
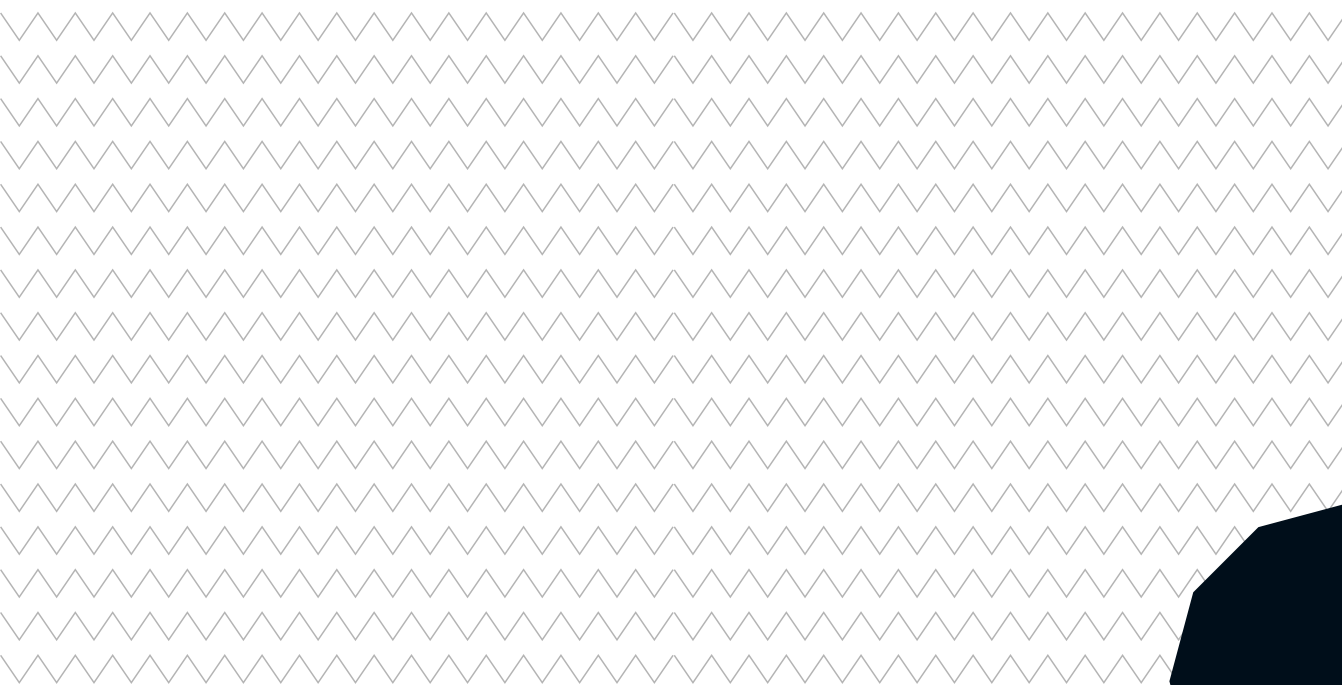




Ultimaker S3

Spare parts catalogue



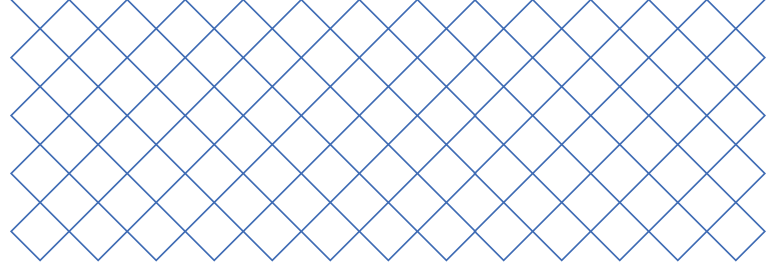


Table of contents

Accessories	3
Axles	6
Cables	8
Electronics	10
Feeder	12
Glass door	16
Housing	18
Motors	22
Nuts & Bolts	24
Packaging	31
Power cables	33
Print head	35
Spacers	43
Z stage	44

Accessoires

1227 - Hex Screwdriver 2.0 mm

Hex Screwdriver 2mm



2083 - Machine oil

Machine Oil



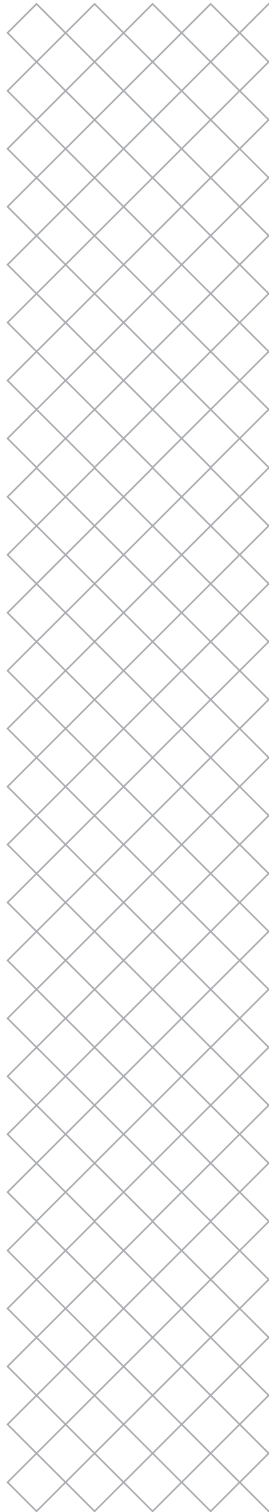
1278 - Glue stick

Glue Stick



2084 - Magnalube

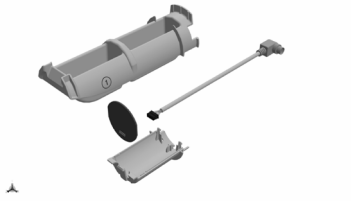
Magnalube Reclosable



Accessoires

216944 - NFC spool holder assembly

NFC Enabled reel holder assembly (S3)



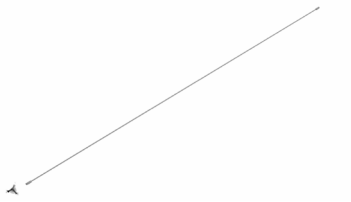
1435 - Filament guide

Filament Guide Assembly



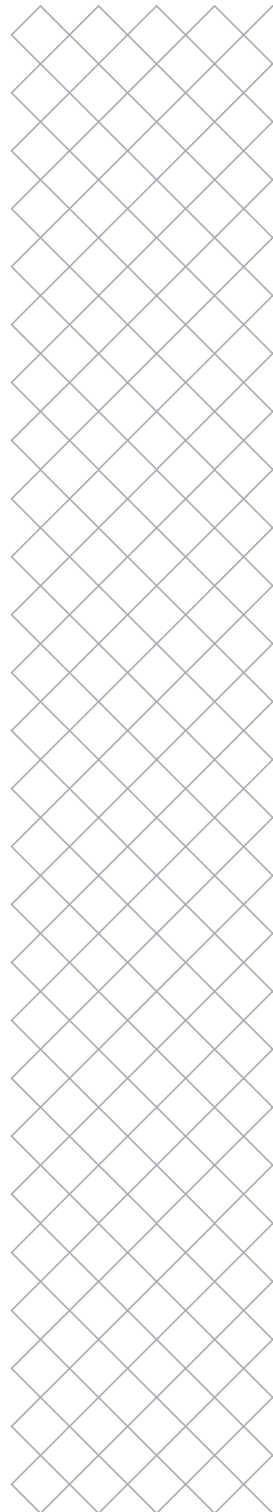
217599 - Ethernet cable

STP ethernet cable L3000

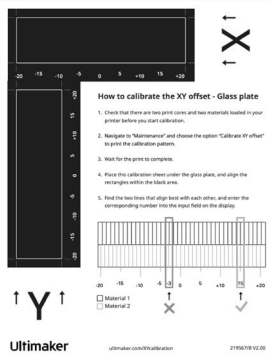


2073 - USB stick

USB stick



Accessoires



9153 - XY calibration sheet

XY Calibration Sheet UM3

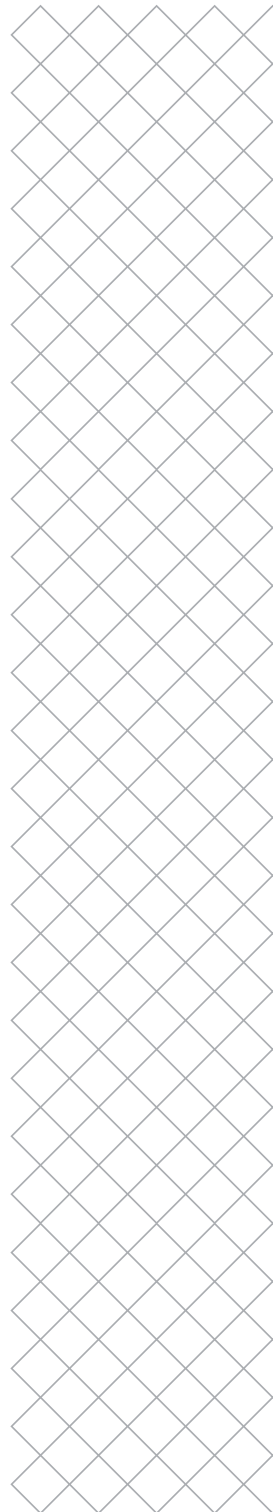
9241 - Calibration card

Calibration Card



1294 - Keep hands clear sticker

Keep Hands Clear Sticker



Axles



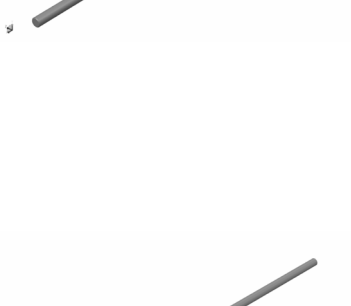
213670 - Z linear shaft L351

Z-linear shaft



213671 - X linear shaft L394

X-linear shaft



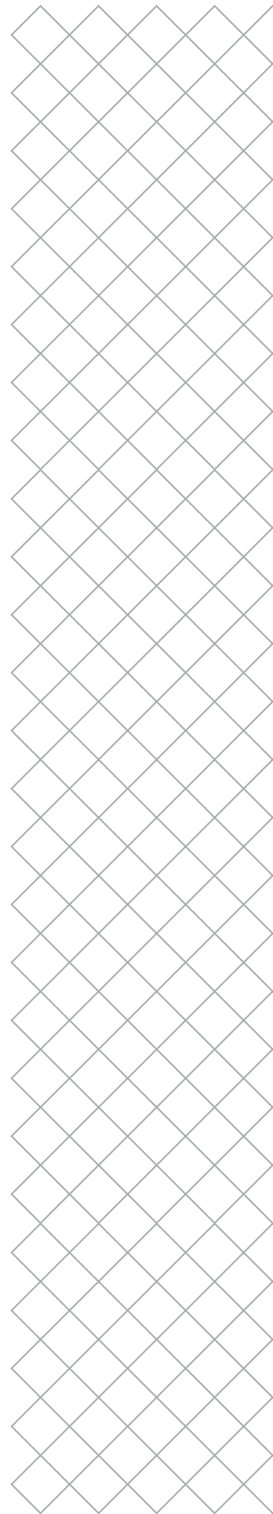
213672 - Y linear shaft L351

Y-linear shaft



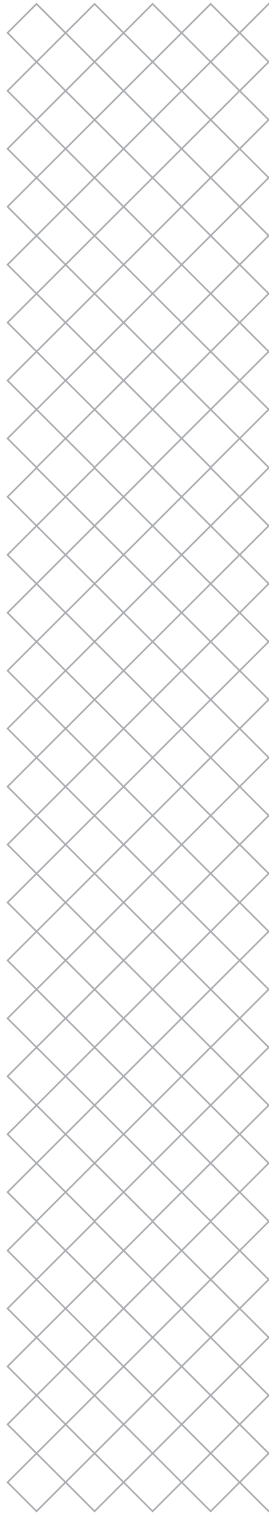
213673 - Print head shaft Y L302

Y-linear shaft print head

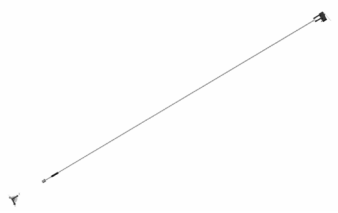


213676 - Print head shaft X L379

X-linear shaft print head

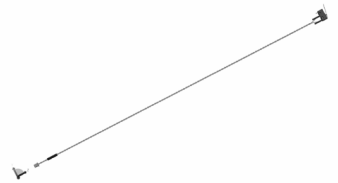


Cables



217400 - X limit switch L770

Limit switch X L770



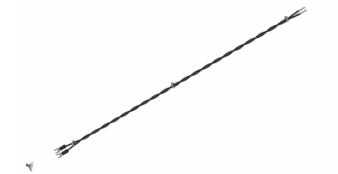
217398 - Y limit switch L590

Limit switch Y L590



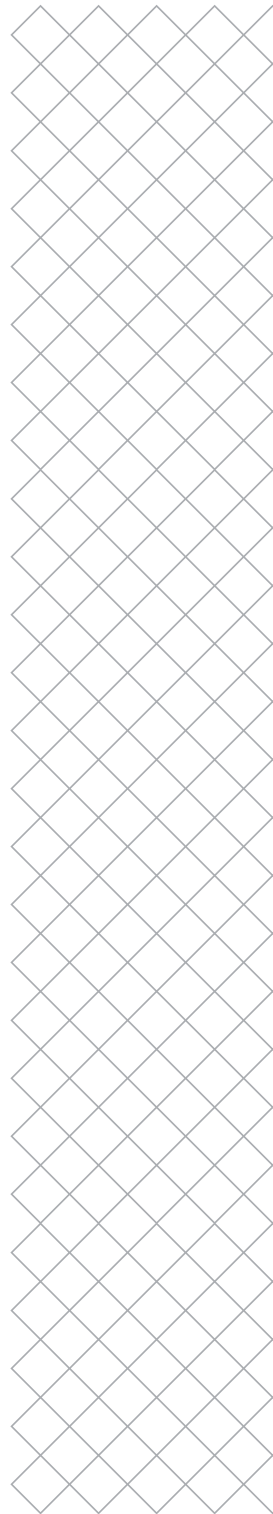
217285 - Z limit switch L200

Limit switch Z L200

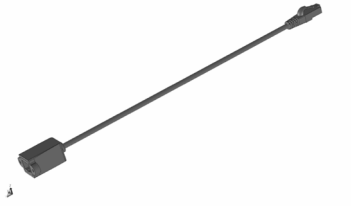


214727 - 24 V cable assembly

24V Cable assembly

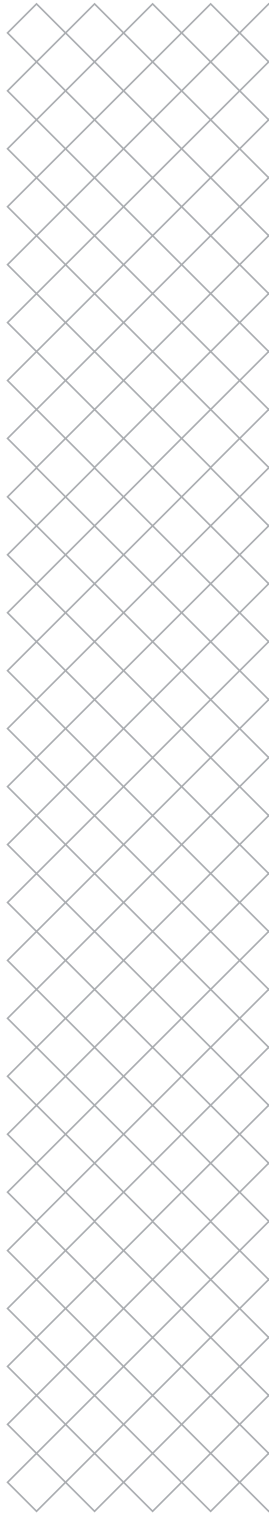


Cables



3247 - Ethernet cable internal

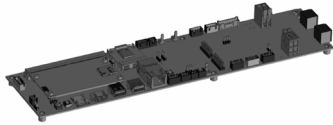
Ethernet Cable Panel Mount UMS5



Electronics

215721 - Electronics assembly

SMARC Mainboard + SOM + Wi-Fi



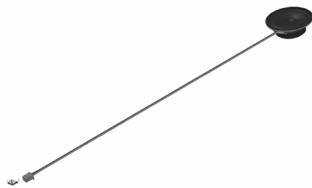
217741 - Display module

Display module



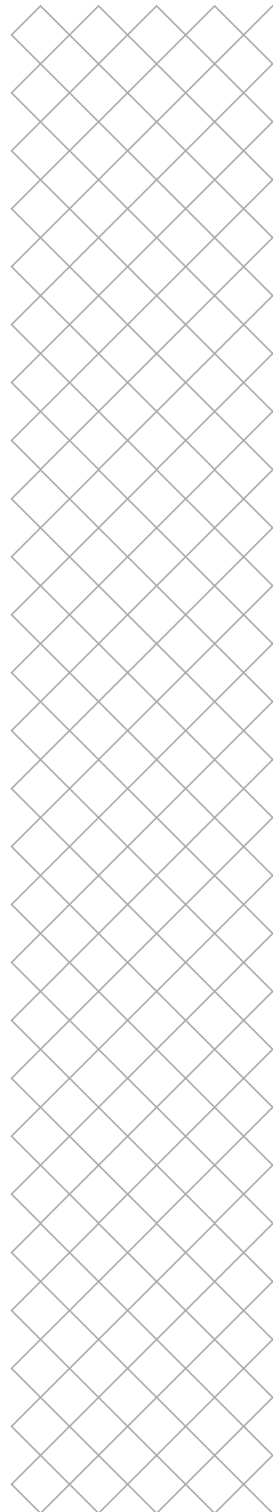
214472 - Speaker assembly

Speaker with cable L300

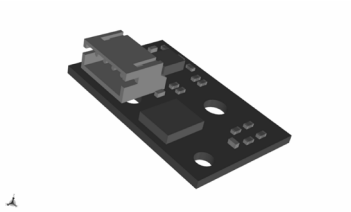


217644 - Camera assembly

Camera Micro Assembly with copper foil shield

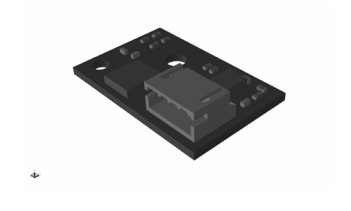


Electronics



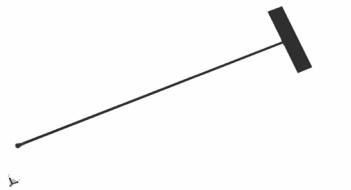
2236 - Flow sensor PCB left

Filament Flow Sensor PCB Left



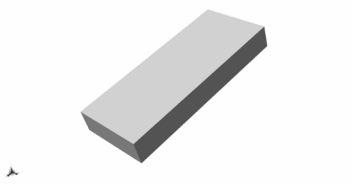
2237 - Flow sensor PCB right

Filament Flow Sensor PCB Right



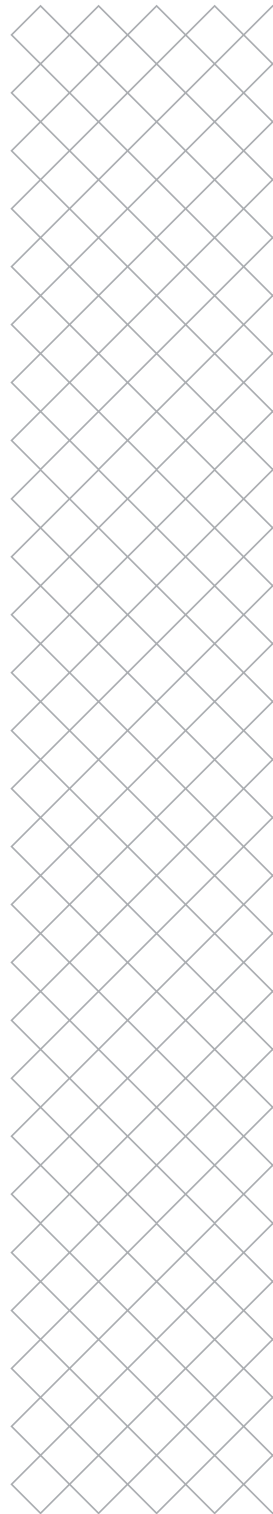
216561 - Wi-Fi antenna

Wi-Fi Antenna 2,4Ghz / 5GHz



2501 - Thermal conductive pad

Thermal Conductive Pad



Feeder



203732 - Feeder assembly left

Feeder Left Assembly UMS5



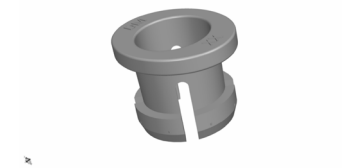
203733 - Feeder assembly right

Feeder Right Assembly UMS5



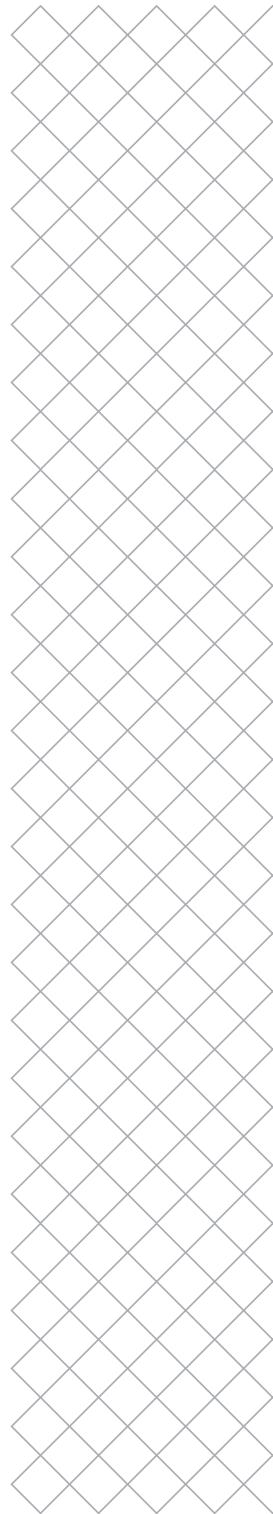
2209 - Feeder ring

Feeder Ring



1069 - Tube coupling collet

Tube Coupling Collet



Feeder



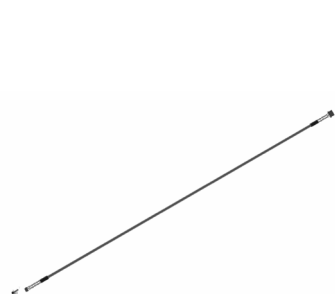
2235 - Flow sensor casing

Flow Sensor Casing



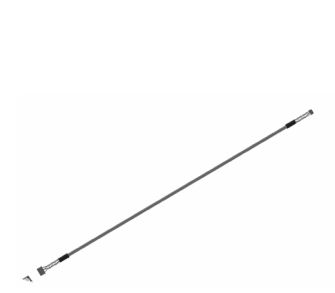
2137 - Clamp clip white

Clamp Clip White



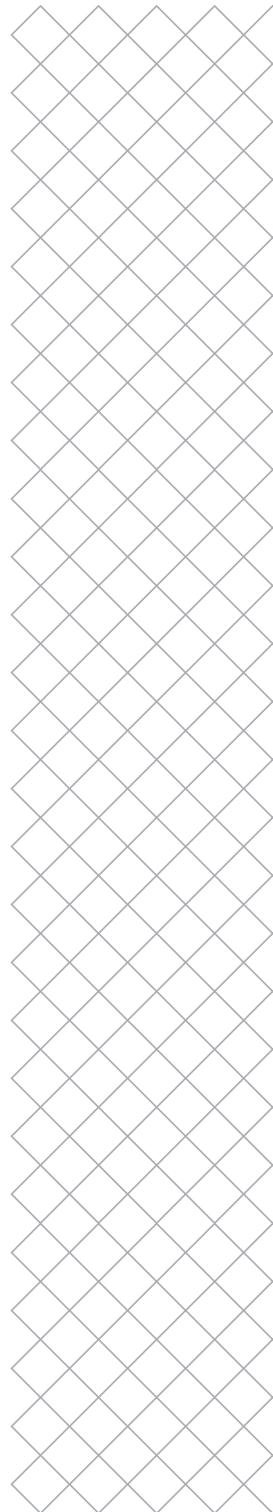
217422 - Flow sensor cable L630

Filament detection cable L630



217476 - Flow sensor cable L450

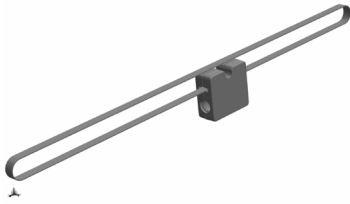
Filament detection cable L450



Gantry

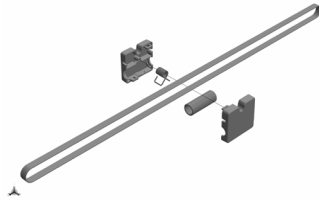
216847 - Sliding block assembly 616

Sliding block 616 assembly



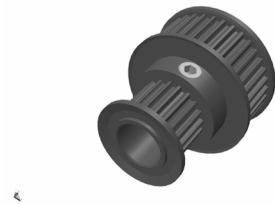
216854 - Sliding block assembly 726

Sliding block 726 assembly



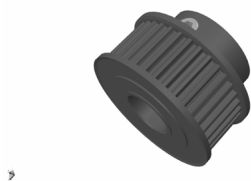
2303 - Double timing pulley assembly (gear ratio)

Double Timing Pulley Assembly (Gear Ratio)



2304 - Pulley 8mm Assembly (Gear Ratio)

Timing pulley 8 mm assembly (gear ratio)



Gantry

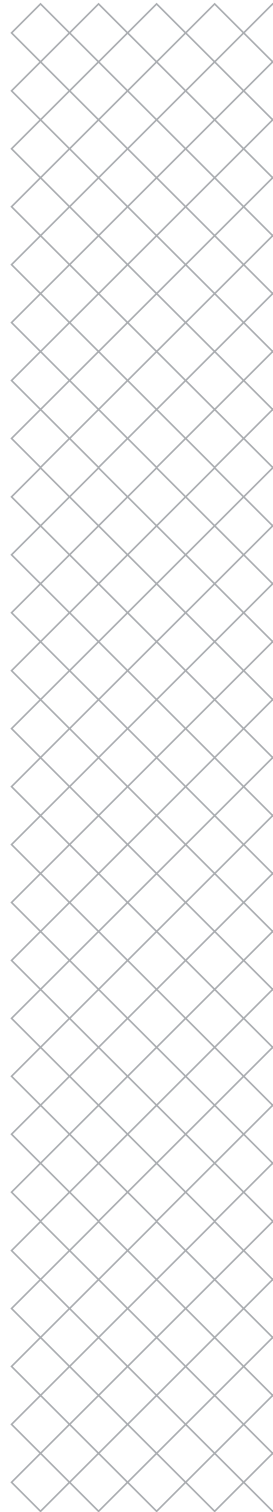
9415 - Timing pulley 8 mm assembly

Pulley 8mm Assembly

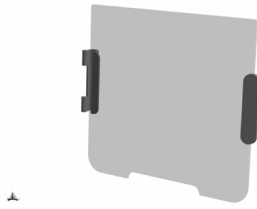


9442 - Pulley 5mm Assembly

Timing pulley 5 mm assembly

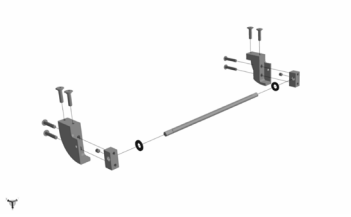


Glass door



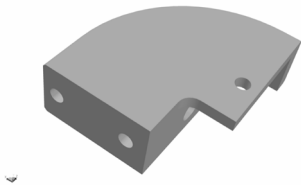
213685 - Glass door assembly S3

Door assembly S3 outsourced



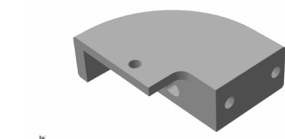
219794 - Door hinge pack

Door hinge pack S3



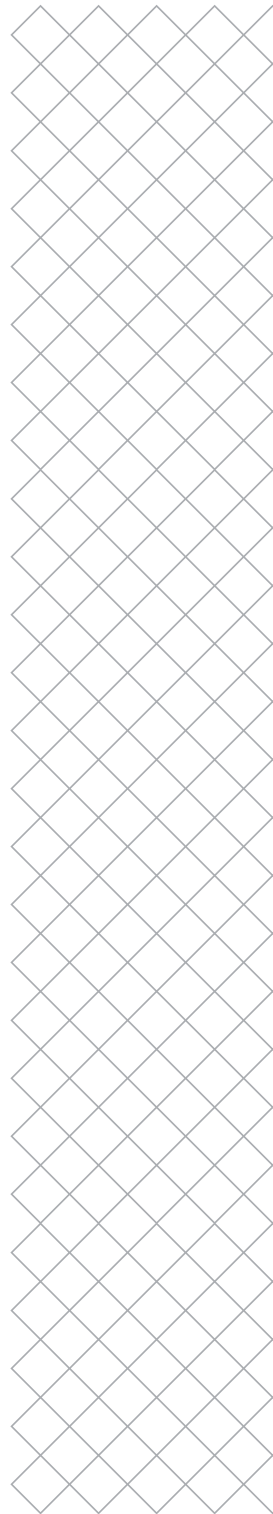
203589 - Hinge mount

Hinge Mount

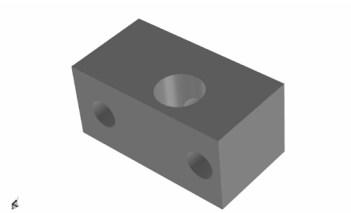


203647 - Hinge mount mirrored

Hinge Mount Mirrored

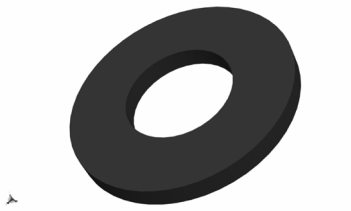


Glass door



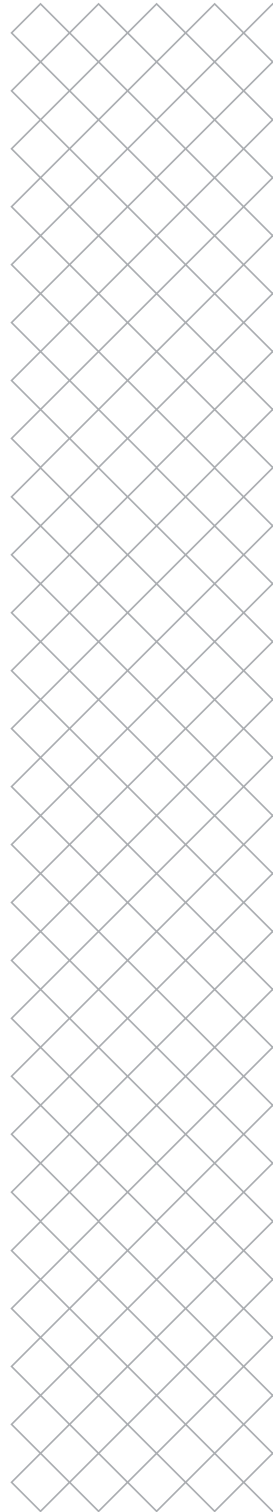
203588 - Hinge block

Hinge Align

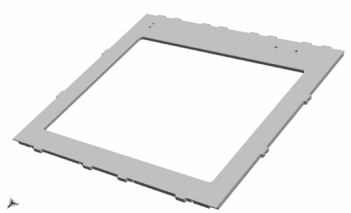


201468 - Nylon washer M4

Nylon Washer M4



Housing



213486 - Top panel

Top Panel



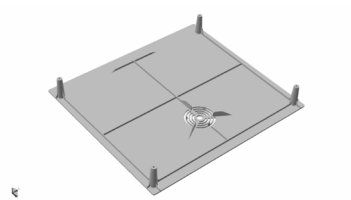
213631 - Right panel

Right panel



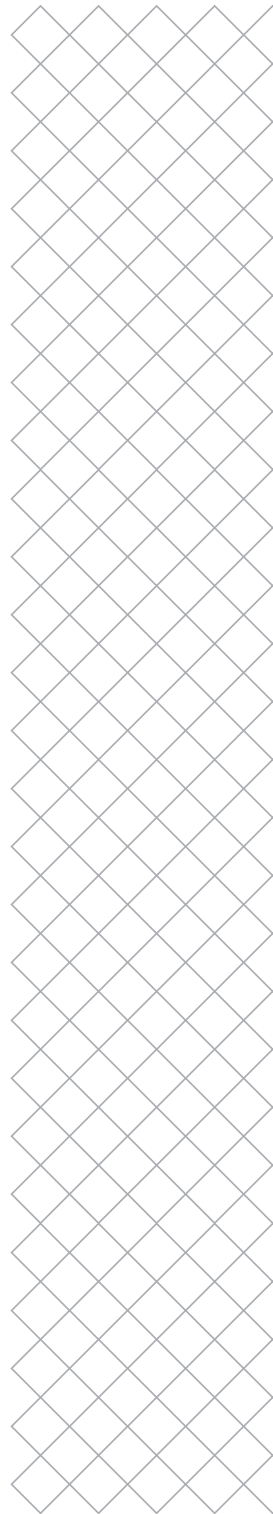
213487 - Left panel

Left panel

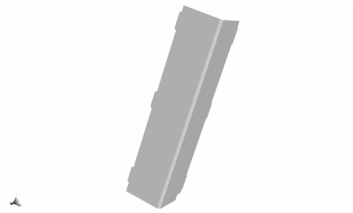


214625 - Bottom cover

Bottom plate S3

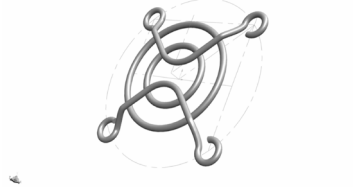


Housing



213702 - Motor cover

Cable cover



2389 - System fan cover

Fan Cover



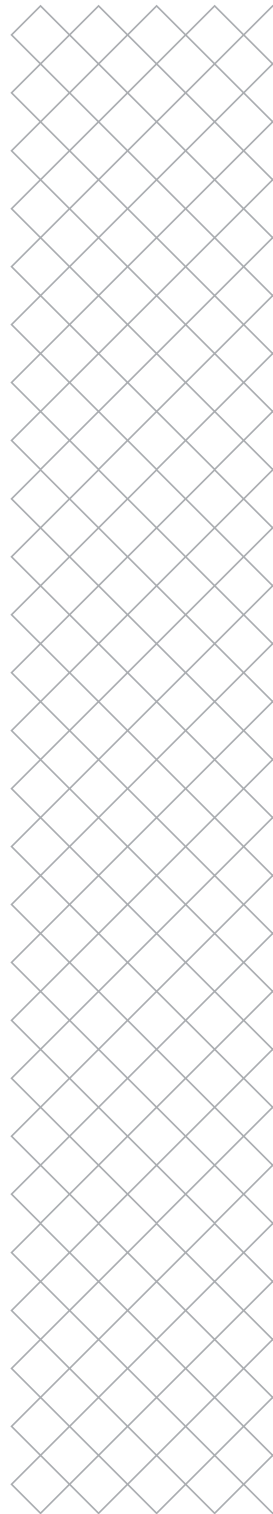
213658 - LED strip L300

White LED strip L300 with cable L550



213659 - Cable cover

Cable cover



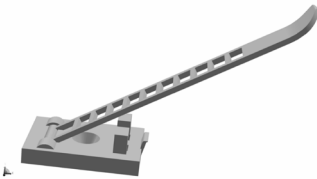
Housing



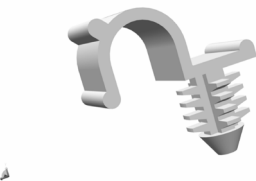
213655 - LED strip profile assembly
LED profile assembly



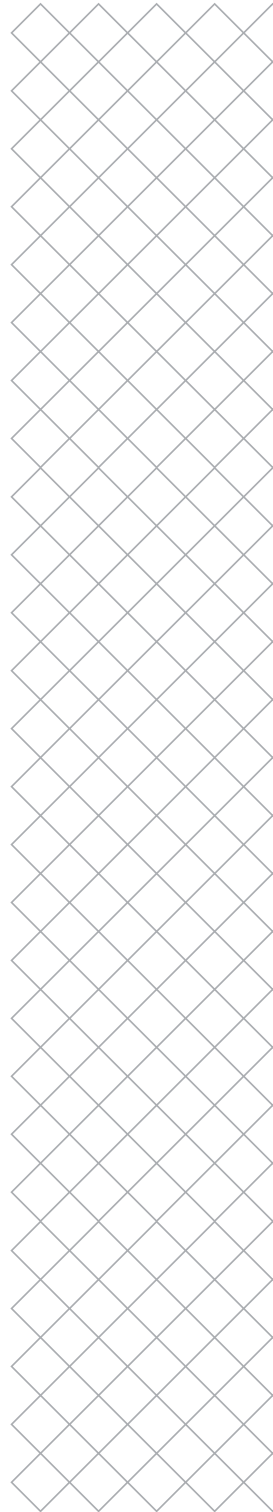
202022 - Cable cover top
Cable Cover Top



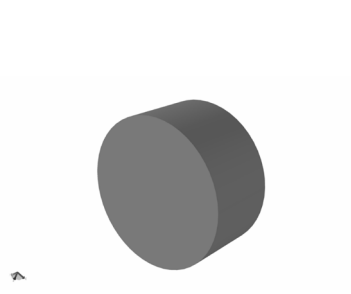
217381 -
Cable clip



2498 - Cable clip 6.4 mm
Cable Clip 6.4mm



Housing



201541 - Magnet 10x5mm

Magnet 10x5mm



2050 - Switch bay

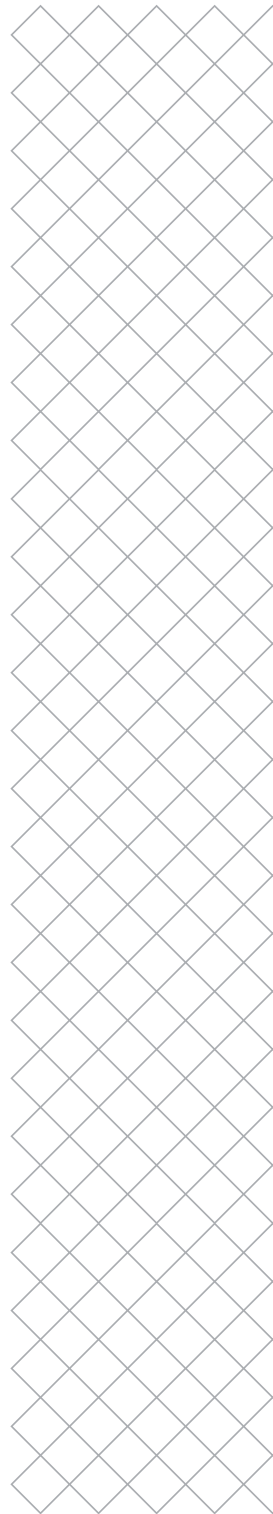
Nozzle switching bay



3420 - Z limit switch cover

End Switch Cover

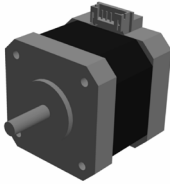
r



Motors

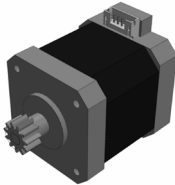
2556 - X,Y motor

XY Motor No Wire



203734 - Feeder motor with gear

Feeder Motor Assembly UMS5



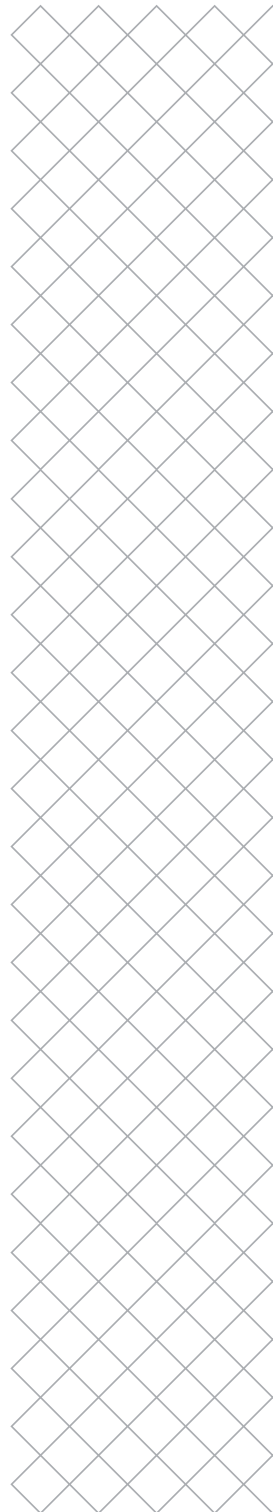
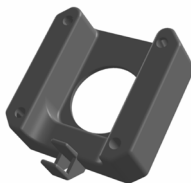
215582 - Z motor with lead nut

Z motor with nut



208133 - Motor spacer

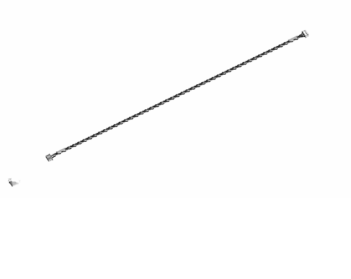
Spacer stepper



Motors

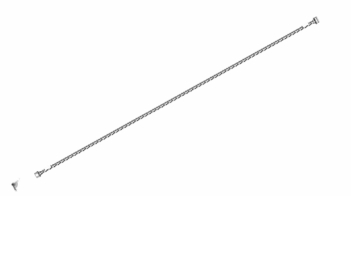
214620 - Motor cable L490

Stepper motor cable L490



214623 - Motor cable L670

Stepper motor cable L670



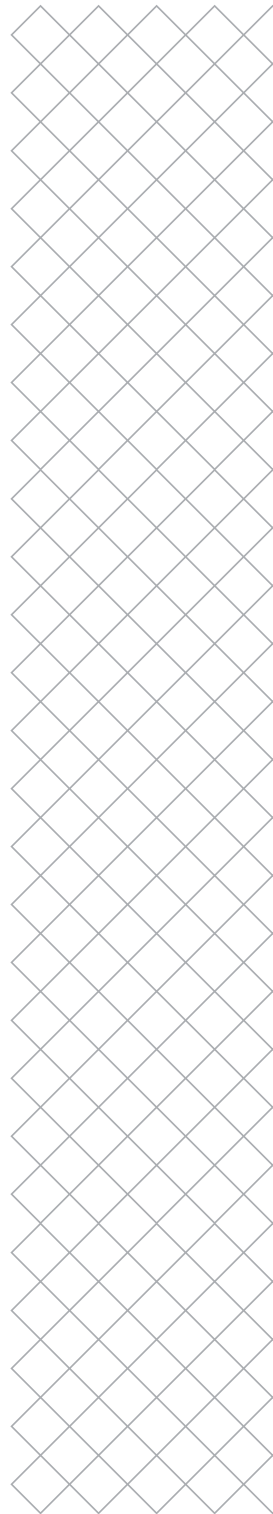
216062 - Motor cable L340

Stepper motor cable L340



216073 - Motor cable L160

Stepper motor cable L160

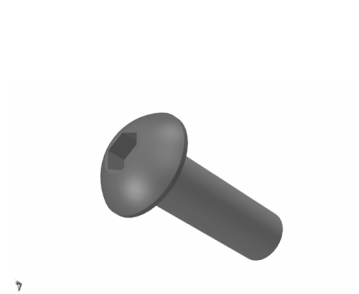


Nuts & Bolts



1200 - M3x8 bolt

ISO 7380 M3X8



1202 - M3x10 bolt

ISO 7380 M3x10



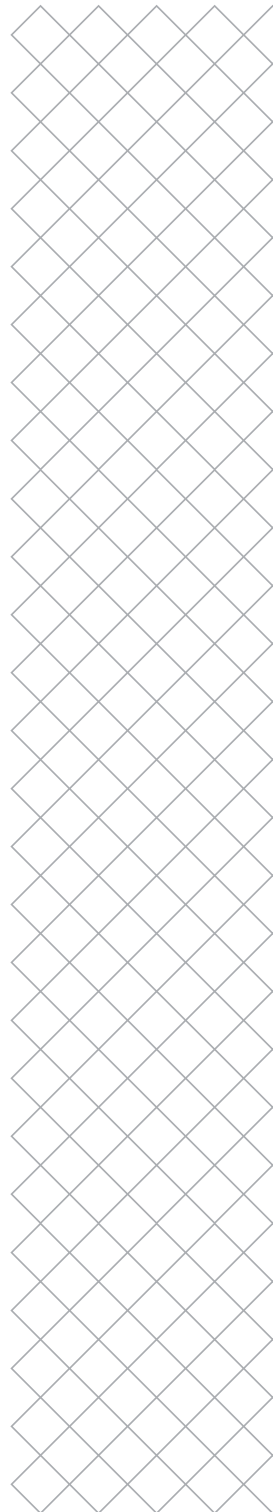
1203 - M3x12 bolt

ISO 7380 M3x12



1204 - M3x16 bolt

ISO 7380 M3x16



Nuts & Bolts



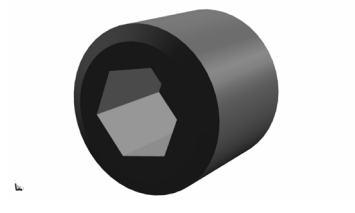
1205 - M3x14 bolt

ISO 7380 M3x14



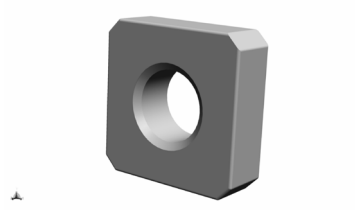
1206 - M3x20 bolt

ISO 7380 M3x20



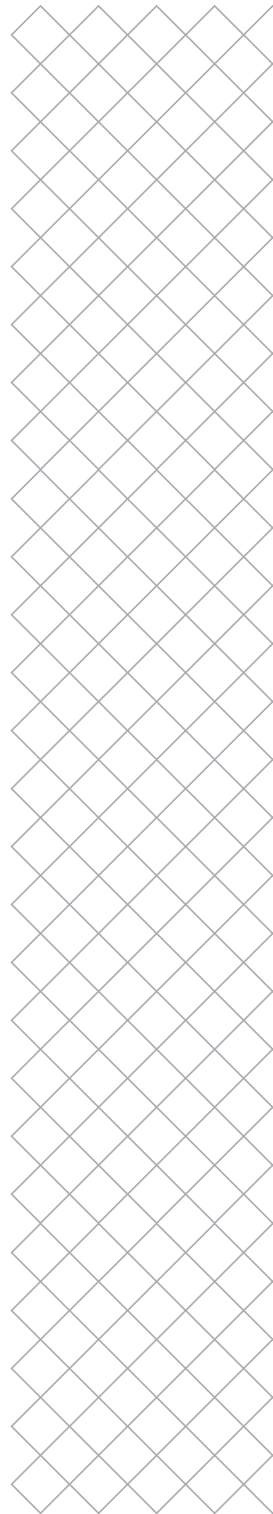
1212 - Set screw M3x3

Set Screw M3x3

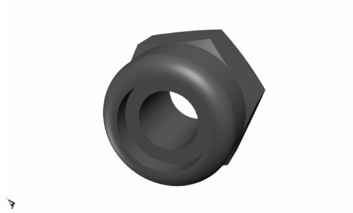


1213 - Square nut M3

DIN 562 Square Nut M3 A2



Nuts & Bolts



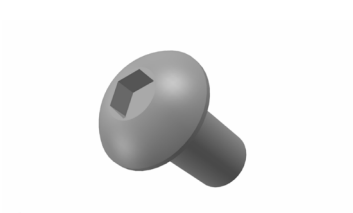
1214 - Lock nut M3

Prevailing Torque Nut M3 ISO 7040



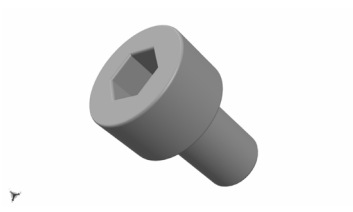
1220 - Ball bearing

Ball Bearing F688-2RS



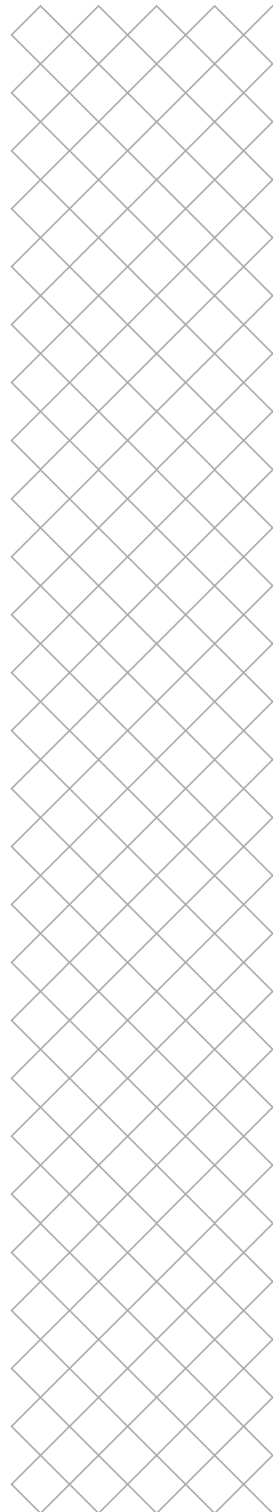
1292 - M3x6 bolt

DIN 7380 M3x6



2037 - M2.5x4 bolt

DIN 912 M2.5x4



Nuts & Bolts



2142 - M2.5x8 bolt

DIN 912 M2.5x8



2144 - M2.5x75 bolt

DIN 912 M2.5x75



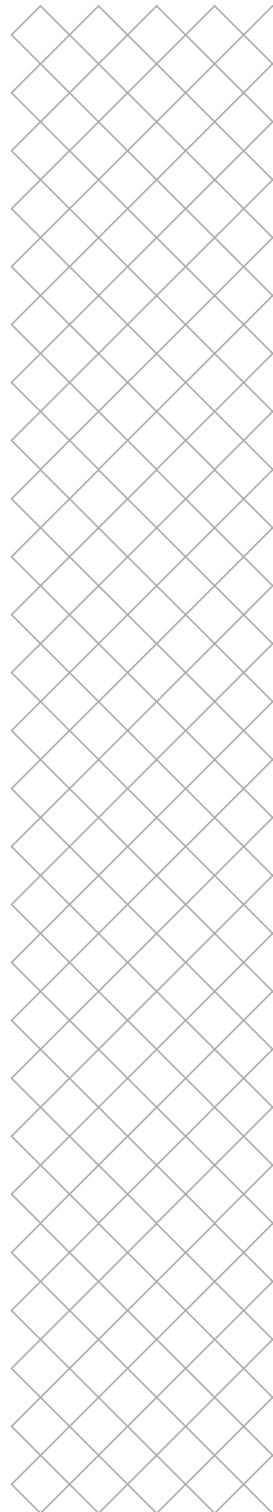
2152 - Thread-forming screw M2.5x6

Hex Socket Head Remform Screw 2.5 x 6

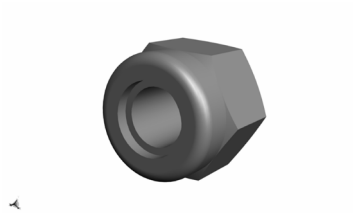


2153 - M2.5x35 bolt

DIN 912 M2.5x35



Nuts & Bolts



2502 - Lock nut M4

Prevailing Torque Nut M4 ISO 7040



2605 - M4x35 bolt

ISO 7380 M4x35



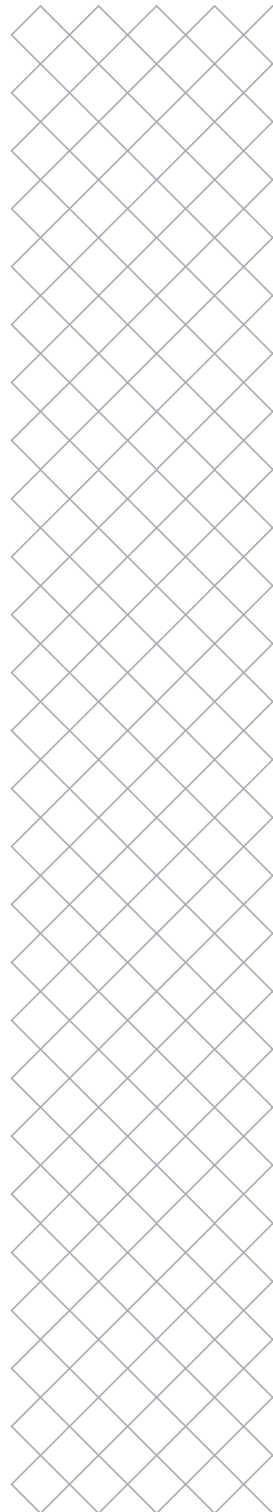
201205 - Flat head M3x16 bolt

Flat head M3X16



201321 - Flat head M3x10 bolt

Flat Head M3X10



Nuts & Bolts



201390 - Flat head M3x12 bolt

Flat head M3X12



212958 - Flat head M3x24.2 bolt

Flat head M3X24,2



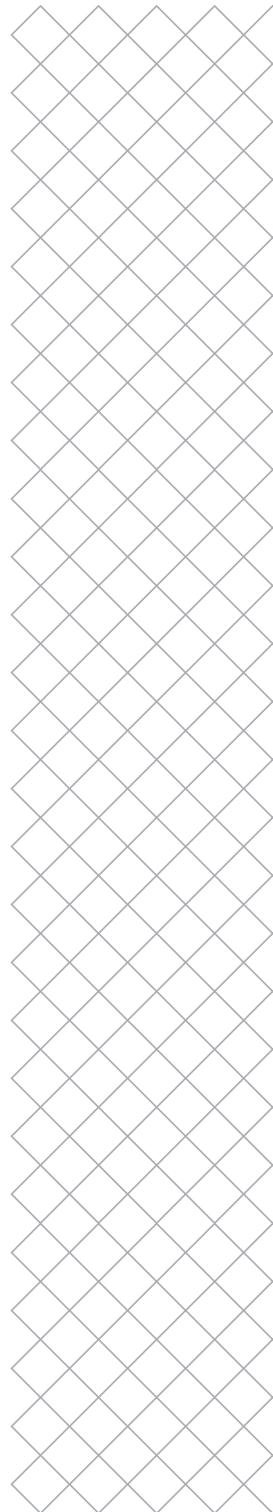
213800 - M4x5 bolt

DIN 7984 M4 x 5

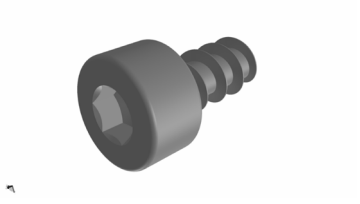


215037 - Safety Torx M3x8 bolt

Button Safety Screw M3x8mm

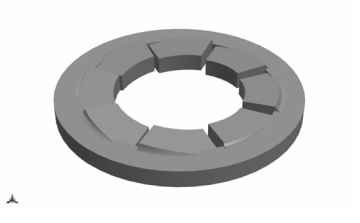


Nuts & Bolts



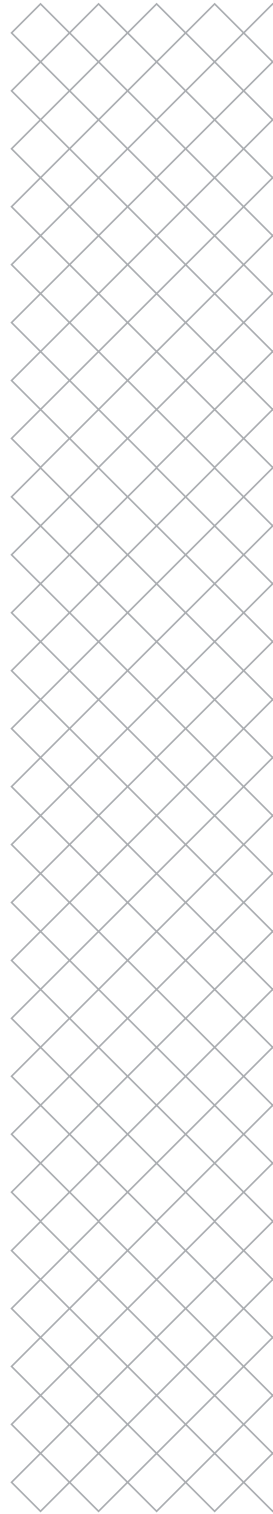
215150 - Thread-forming screw M2.5x5

Hex socket head plastic screw 2,5 x 5



217840 - M3 serrated lock washer

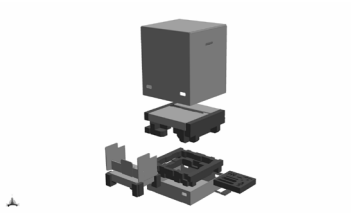
M3 serrated lock washer



Packaging

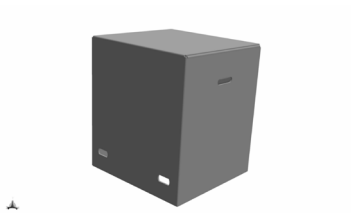
216949 - Packaging Ultimaker S3

Box assembly S3



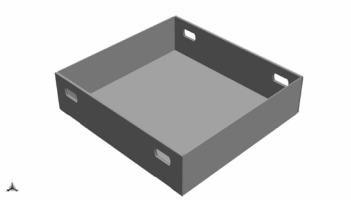
218481 - Box Ultimaker S3

Coverbox S3



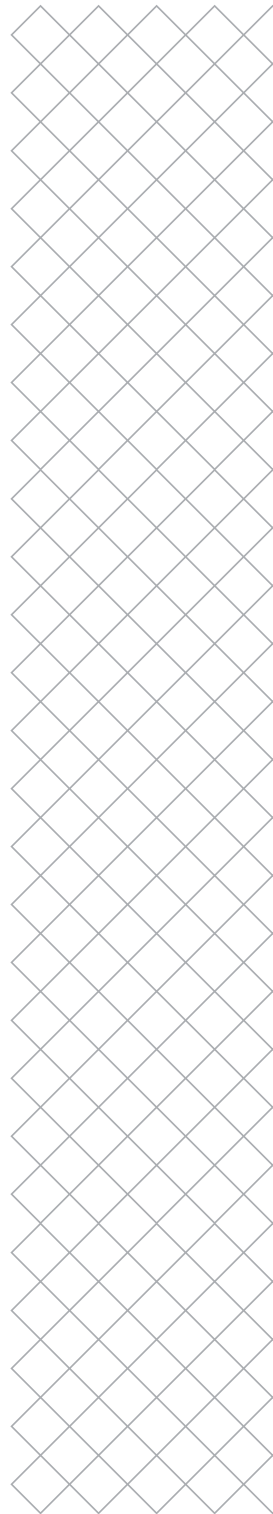
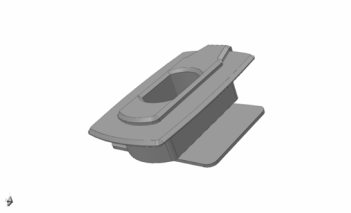
218483 - Packaging bottom tray

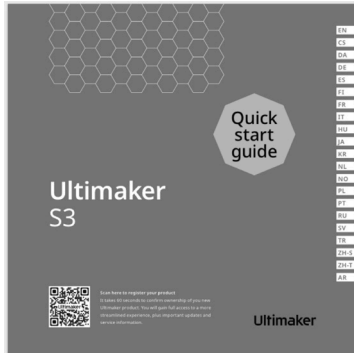
Bottomlid S3



206688 - Locking clip

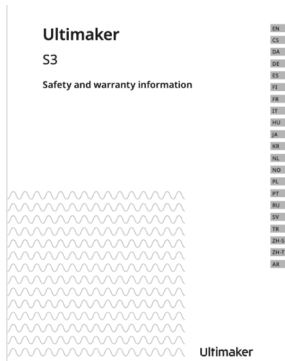
S5Pkg Box locking clip





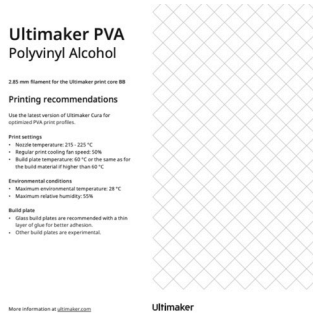
216987 - Quick start guide S3

Quick start guide S3



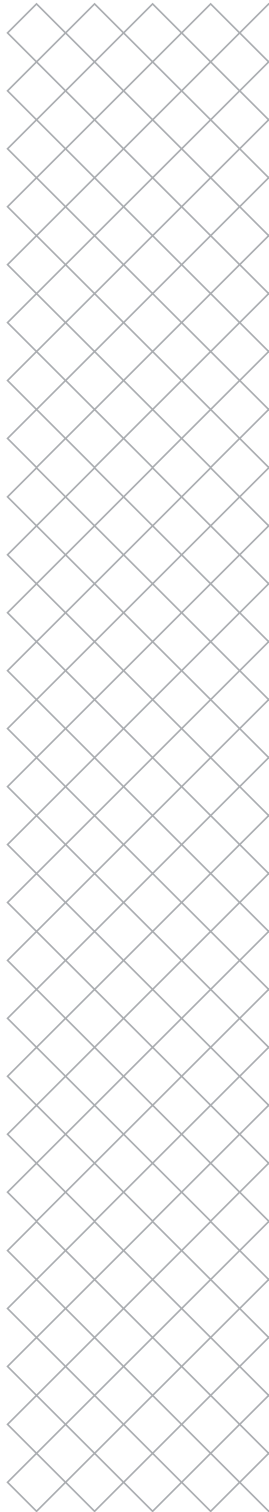
218676 - Safety booklet S3

Safety book S3



210181 - PVA inlay

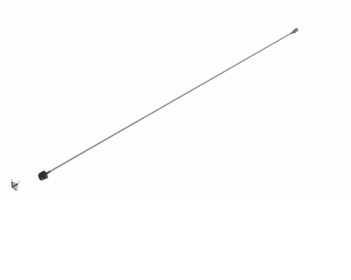
PVA Inlay



Power cables



1805 - Power cable (EU)
Power Cable EU Type C13 CE



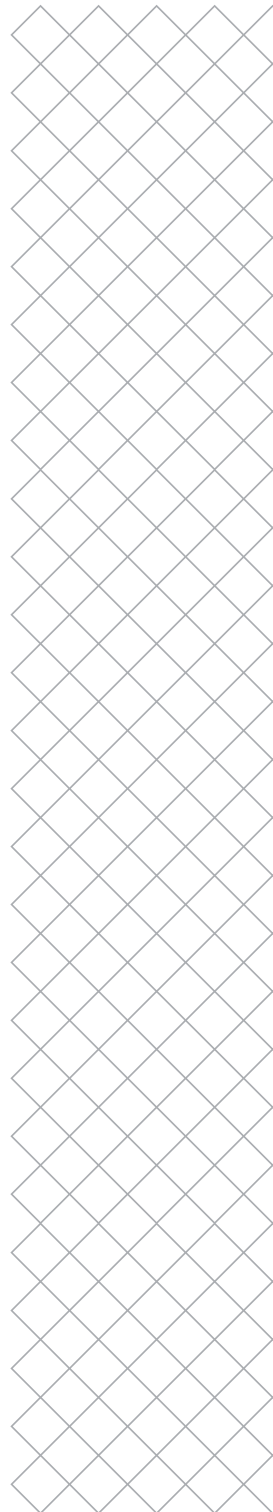
1806 - Power cable (UK)
Power Cable UK Type C13 CE



1807 - Power cable (AU)
Power Cable AU Type C13 CE



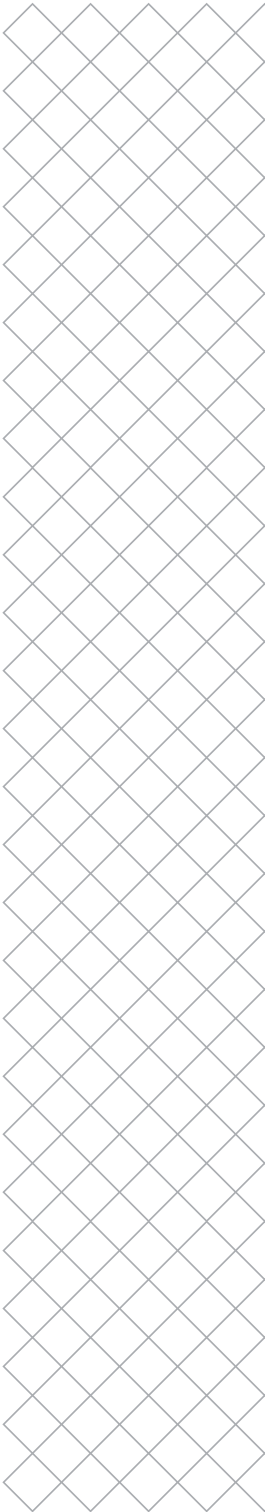
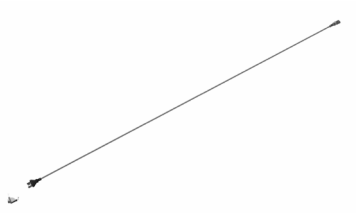
1808 - Power cable (US)
Power Cable US Type C13 CE



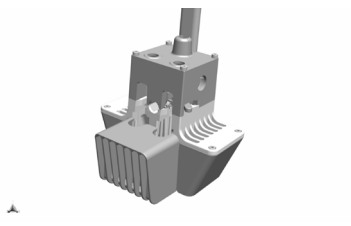
Power cables

202091 - Power cable (ARG)

Power Cable ARG Type C13 CE

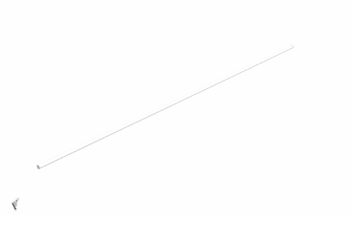


Print head



219259 - Print head assembly

Printhead Assembly FR S3/S5r2



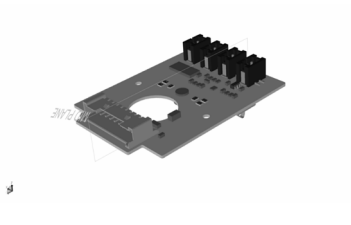
1266 - Bowden tube

Bowden Tube



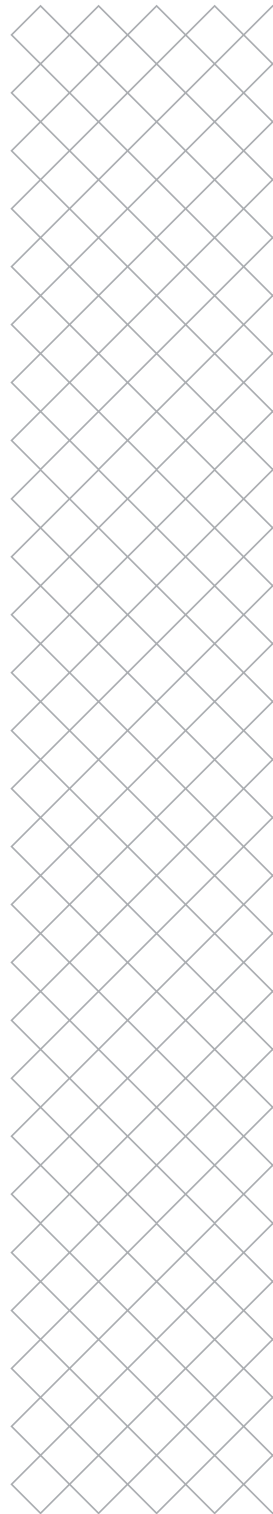
1388 - Bottom plate

Bottom Plate

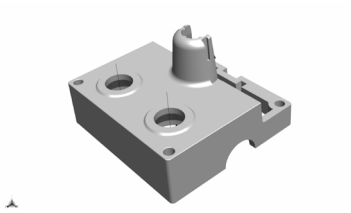


1391 - Print head PCB

Print Head Board

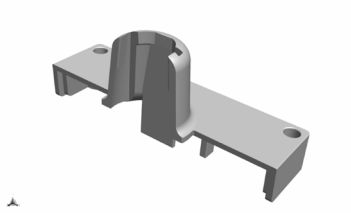


Print head



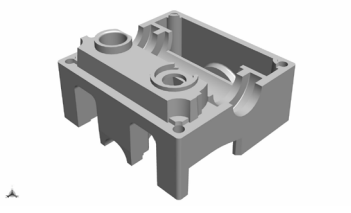
219260 - Bearing housing top

Bearing housing top



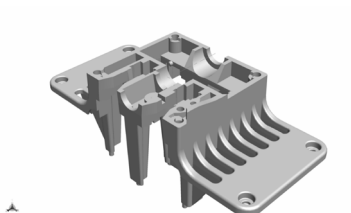
219261 - Print head cable cover

Reelholder replacement plug



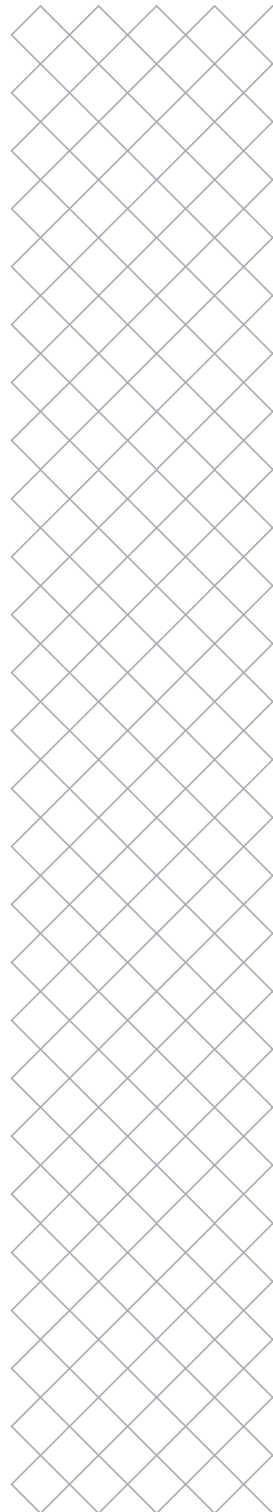
219263 - Bearing housing middle

Bearing housing middle

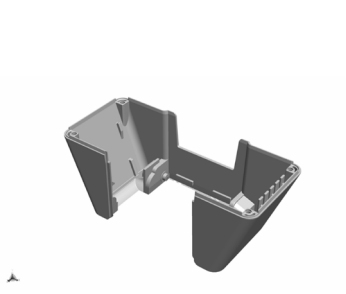


219264 - Header bracket

Header bracket

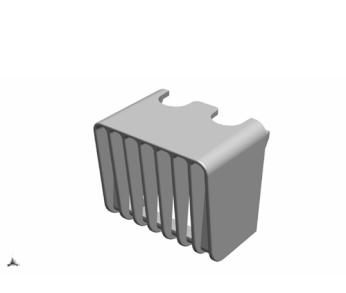


Print head



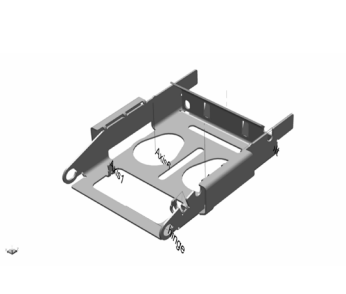
219266 - Side fan bracket

Side fan bracket



1406 - Front fan cover

Front Fan Cover



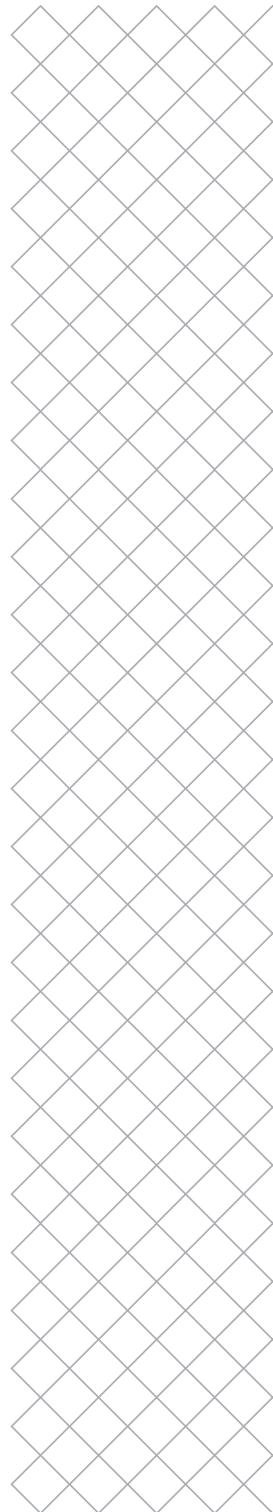
203637- Front fan bracket

Front Fan Bracket S_R2



203639 - Metal plate nozzle cover

Nozzle Seal Adapter S



Print head

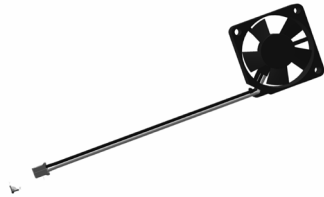
203641 - Silicone nozzle cover

Nozzle Seal S



2133- Front fan

Axial Fan 35x35x10



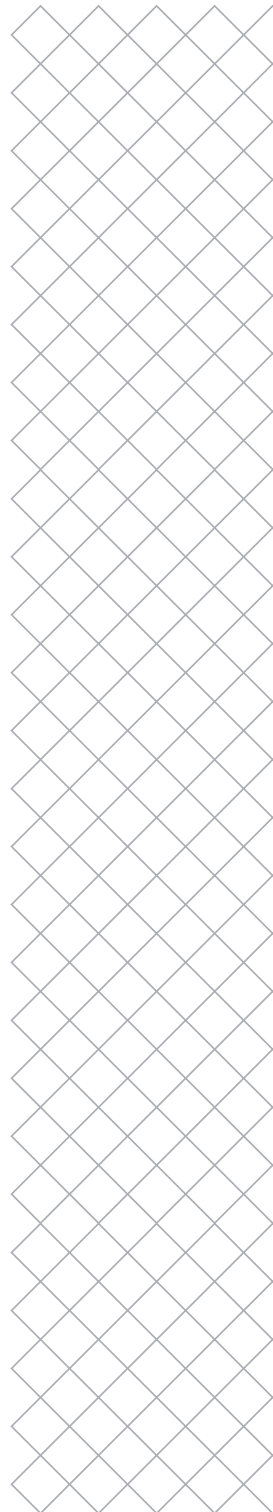
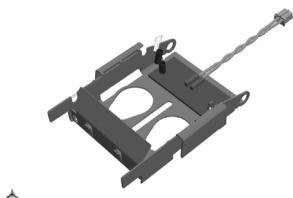
2135 - Side fan

Radial Fan 35x35x10

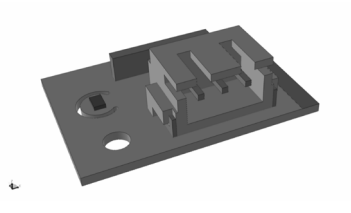


210887 - Capacitive sensor assembly

Capacitive Sensor Assembly

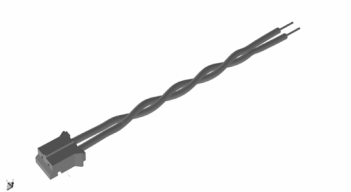


Print head



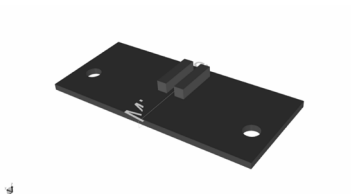
214682 - Sensor PCBA

Sensors PCB



2014 - Capacitive sensor cable

Capacitive Sensor Cable



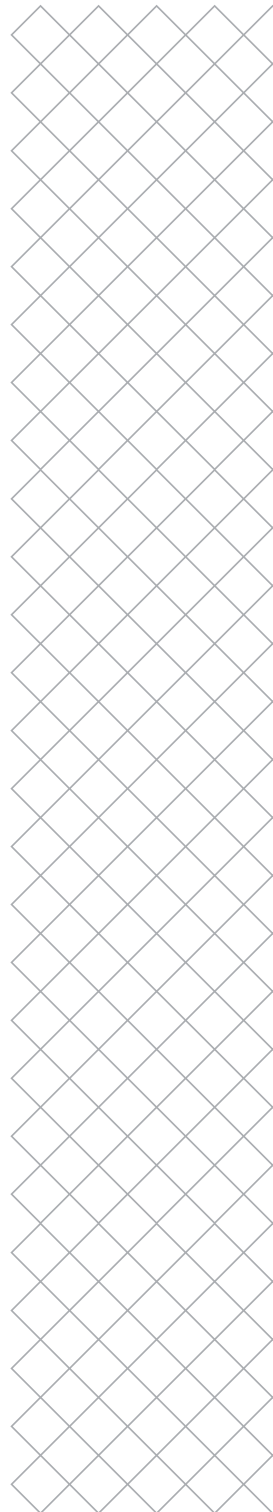
2015 - Capacitive sensor board

Capacitive Sensor Board

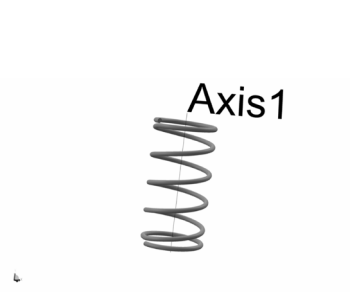


2131 - Print head filament guide

Print Head Bowden Tube Exit



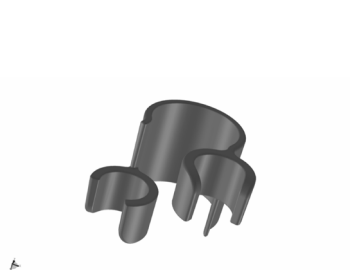
Print head



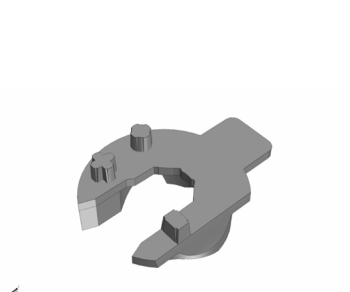
2130 - Spring DR1300
Lifting Ring Spring DR1300



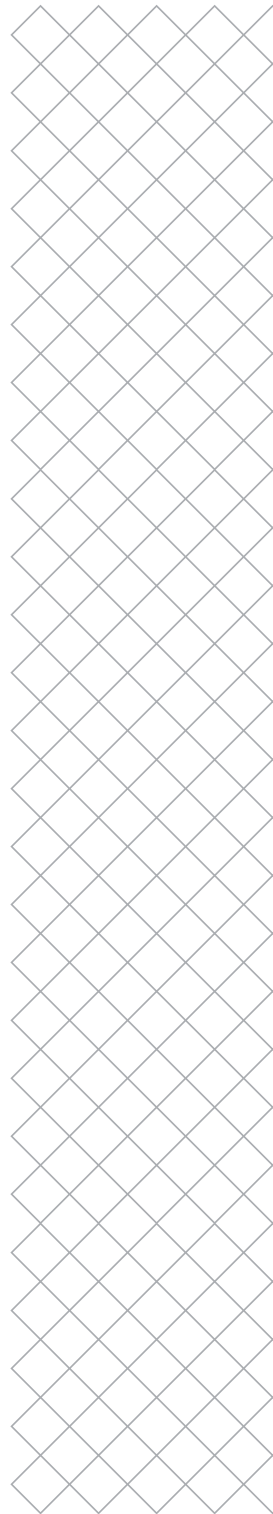
2117 - Lifting switch
Lifting Switch



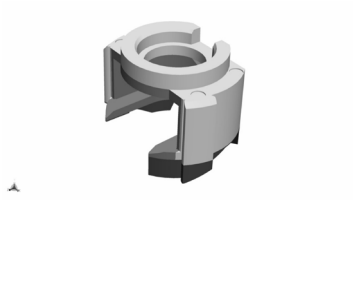
2069 - Print head cable clip
Header Cable Clip



2138 - Lifting ring bottom
Lifting Ring Bottom



Print head



1407 - Lifting ring

Lifting Ring



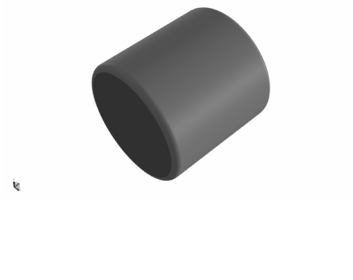
1408 - X linear bearing

Linear Bearing LMK10L



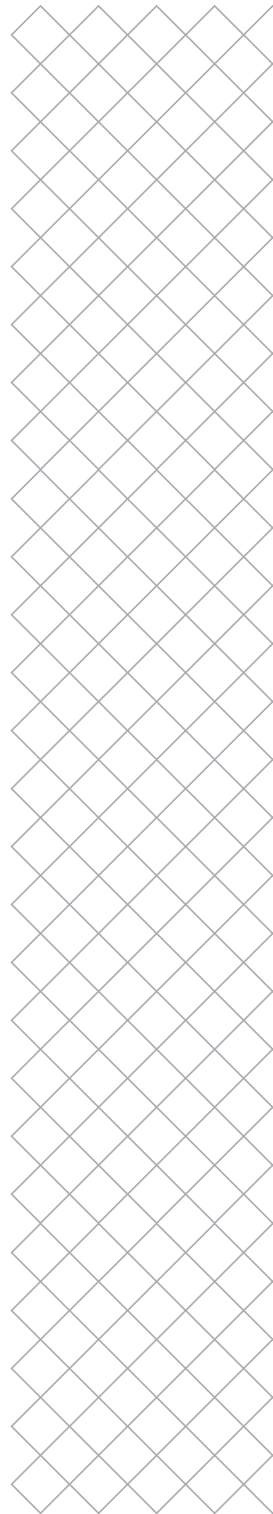
1409 - Y linear bearing

Linear Bearing LMK10L

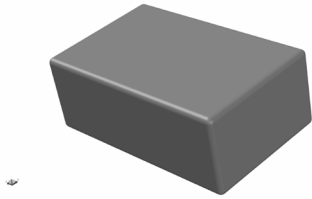


205923 - Front fan magnet

Front Fan Magnet

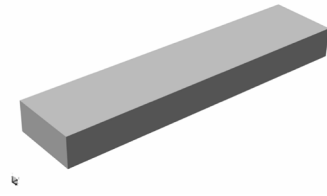


Print head



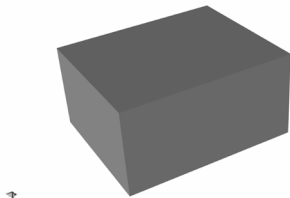
2136 - Hot end magnet

Hot End Magnet



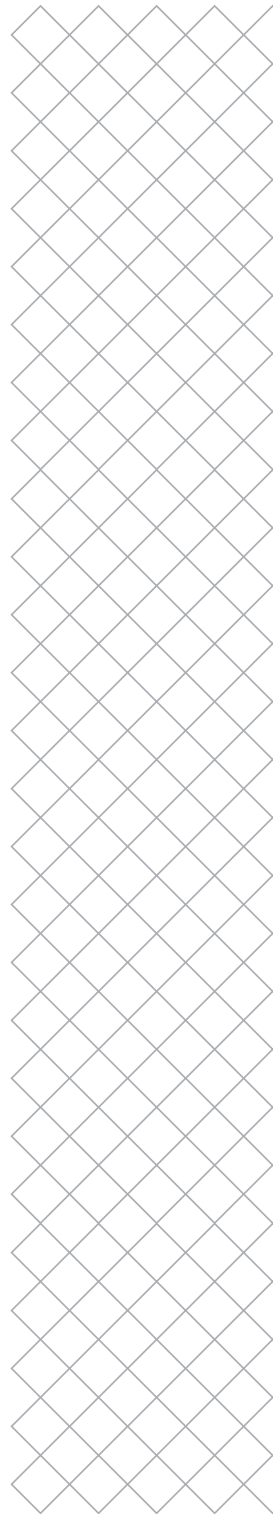
2158 - Foam tape

Foam Tape



2163 - Magnetic field conductor

Magnetic Field Conductor

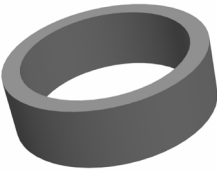


Spacers



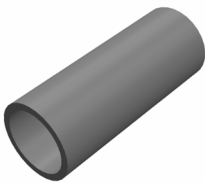
1174 - Spacer 8 mm

Spacer 8.2x10x8



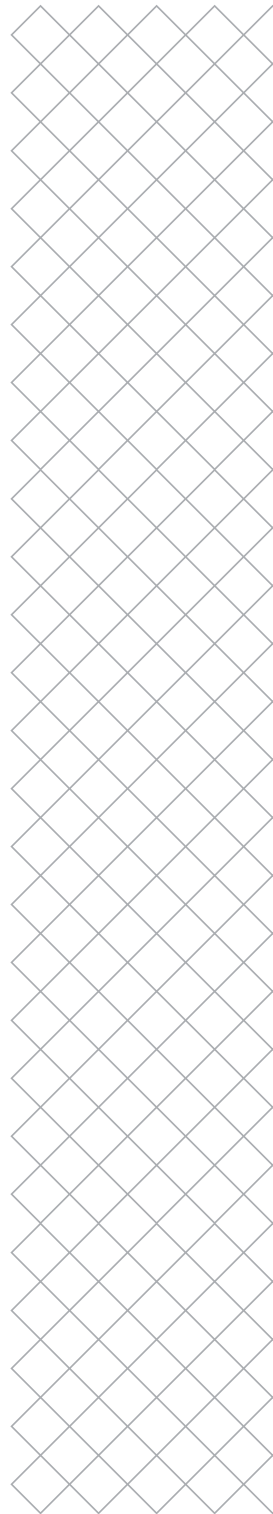
1175 - Spacer 3 mm

Spacer 8.2x10x3



1178 - Spacer 25 mm

Spacer 8,2x10x25



Z stage

1256 - Build plate clamp back

Build Platform Glass Retainer Back



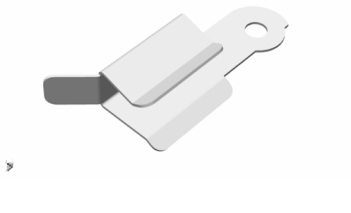
1788 - Spring 8x22

Spring 8x22mm



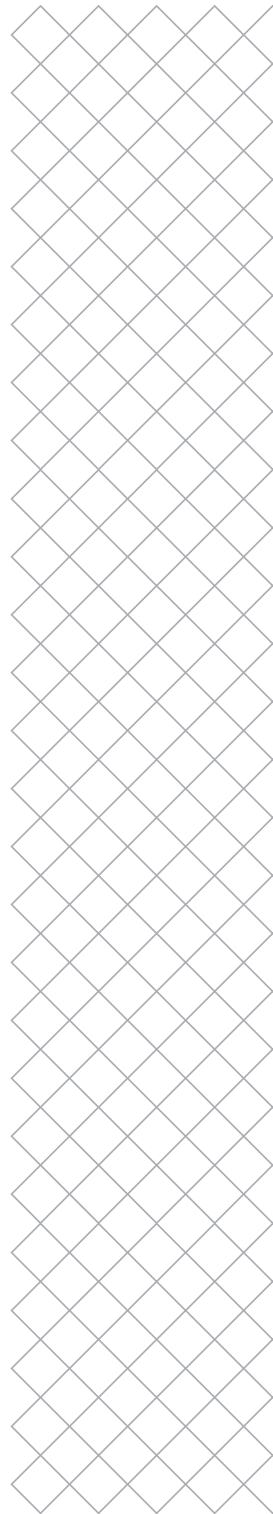
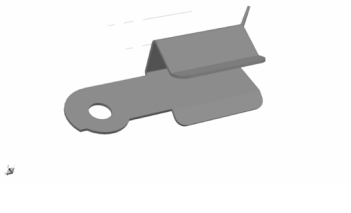
1987 - Build plate clamp front-left

Table Clip Front-Left



1988 - Build plate clamp front-right

Table Clip Front-Right



Z stage



2478 - Z cap metal

Z-Cap Metal



2494 - Heat resistant cable tie

Tie Wrap Heat Resistant



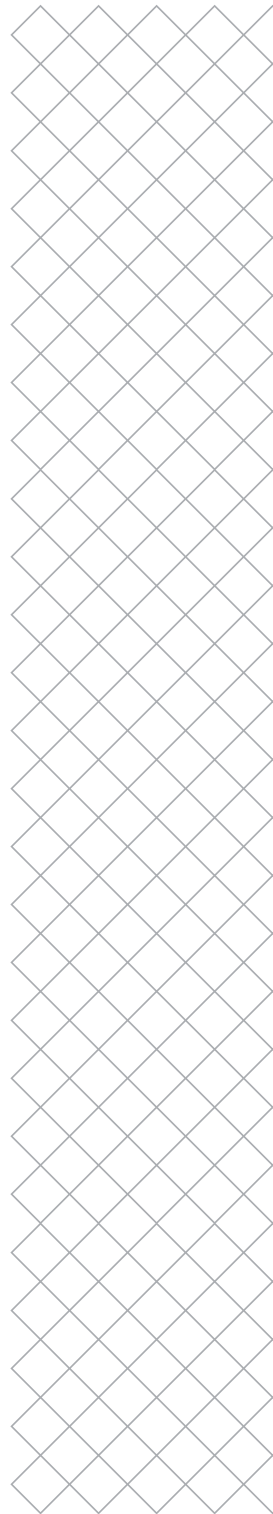
2500 - Z cap with inserts

Z-Cap With Inserts



213704 - Print table base plate

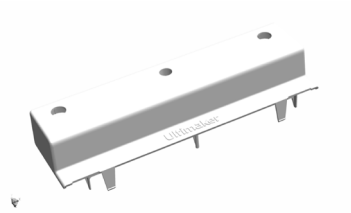
Print table base plate



Z stage

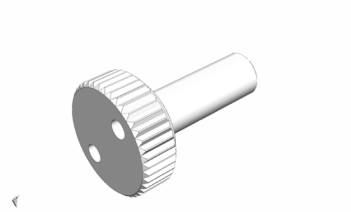
213788 - Print table back cover

Print table back cover



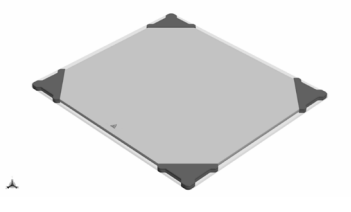
214360 - Thumb wheel

Knurled nut platform



214421 - Glass plate 257x229

Print Table Glass UM3/UM2+ assembled



219804 - Heated bed assembly

Print Table Assembly

