

# ULTIMAKER 2 GO



# TABLE OF CONTENTS

## SPARE PARTS ULTIMAKER 2 GO

#Frame	3
#Axis	5
#1686 Electronics Pack	7
#Controller	8
#1688 Pulley Pack	10
#Bearings	11
#Belts	12
#1691 Feeder Pack	13
#Bed	15
#Print Head	17
#Bowden Tube	20
#Motor Pack	21
#End Stop Pack	22
#Fan Pack	23
#Hot End Pack	24
Power Supply Unit	26
Additional	27
Packaging	29

# SPARE PARTS ULTIMAKER 2 GO

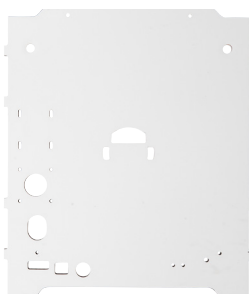
## #FRAME



- 1156 Z-shaft Cap Bottom
- 1711 Back Panel
- 1712 Left Panel
- 1713 Right Panel
- 1715 Top Panel
- 1716 Front Panel
- 1717 Print Table Back Cover
- 1718 Short Reel Holder
- 1738 Cable Cover
- 1740 Electronics Cover
- 1901 Controler Electronics Cover



- 1156 Z-shaft Cap Bottom



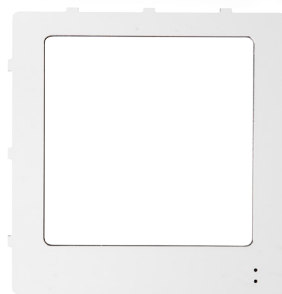
- 1711 Back Panel



- 1712 Left Panel



- 1713 Right Panel



- 1715 Top Panel

# SPARE PARTS ULTIMAKER 2 GO

## #FRAME



1716 Front Panel



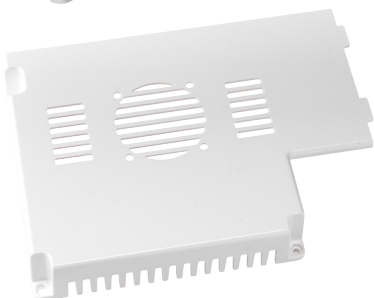
1717 Print Table Back Cover



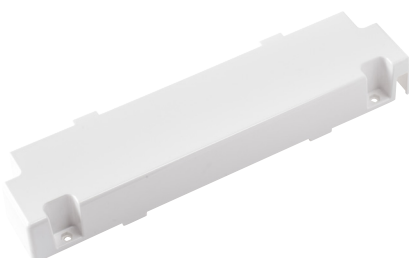
1718 Short Reel Holder



1738 Cable Cover



1740 Electronics Cover



1901 Controller Electronics Cover

# SPARE PARTS ULTIMAKER 2 GO

#AXIS



- 1701 Y-linear shaft
- 1702 X-linear shaft
- 1703 Z-linear shaft
- 1704 Print Head Shaft X
- 1705 Print Head Shaft Y
- 1706 Z-Motor with Trapezoidal Lead Screw



1701 Y-linear shaft



1702 X-linear shaft



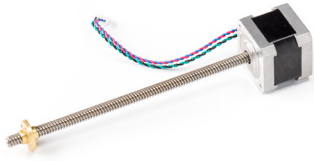
1703 Z-linear shaft



1704 Print Head Shaft X



1705 Print Head Shaft Y



1706 Z-Motor with Trapezoidal Lead Screw

# SPARE PARTS ULTIMAKER 2 GO

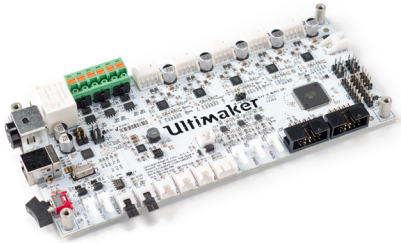
## #1686 ELECTRONICS PACK

1315 Jumper

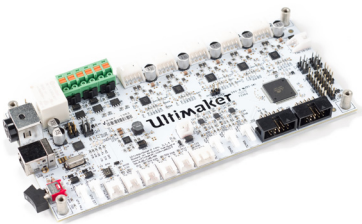
2x

1546 Main Board v2.1.4.

1x



1315 Jumper



1546 Main Board v2.1.4.

# SPARE PARTS ULTIMAKER 2 GO

## #CONTROLLER

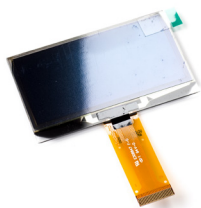
1244	Knob Front UM2	1x
1245	Knob Housing UM2	1x
1247	OLED Display UM2	1x
1249	Ulticontroller Board	1x
1250	SD card	1x
1730	Double flat Cable 10 Wire	1x
		1x
		1x



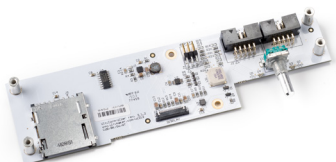
1244 Knob Front UM2



1245 Knob Housing UM2



1247 OLED Display UM2

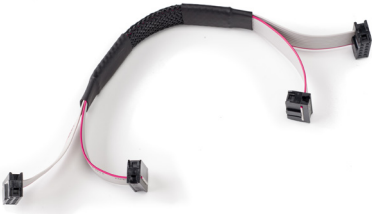


1249 Ulticontroller Board



1250 SD card





1730 Double flat Cable 10 Wire

# SPARE PARTS ULTIMAKER 2 GO

## #1688 PULLEY PACK



<b>1165</b>	Timing Pulley 5mm Shaft GT2	2x
<b>1166</b>	Timing Pulley 8mm Shaft GT2	8x
<b>1167</b>	Timing Pulley Double 8mm Shaft GT2	1x
<b>1211</b>	Set screw	11x



**1165** Timing Pulley 5mm Shaft GT2



**1166** Timing Pulley 8mm Shaft GT2



**1167** Timing Pulley Double 8mm Shaft GT2



**1211** Set screw

- 1065 Linear Bearing LM6LUU
- 1170 Square Flanged Linear Bearing LMK12LUU
- 1220 Ball Bearing F688-2RS



1065 Linear Bearing LM6LUU



1170 Square Flanged Linear Bearing LMK12LUU



1220 Ball Bearing F688-2RS

- 1056 Sintered Bushing
- 1168 Sliding Block Spring
- 1188 Timing Belt GT2 200
- 1255 Sliding Block Half UM2
- 1736 Timing Belt GT2 430



1056 Sintered Bushing



1168 Sliding Block Spring



1188 Timing Belt GT2 200



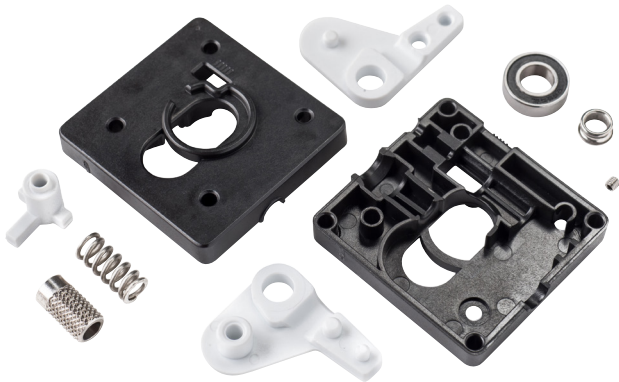
1255 Sliding Block Half UM2



1736 Timing Belt GT2 430

# SPARE PARTS ULTIMAKER 2 GO

## #1691 FEEDER PACK



1021	Ball Bearing 688-2RS	1x
1140	Feeder Spring DR2110	1x
1212	Setscrew m3x3	1x
1258	Feeder Part A	1x
1259	Feeder Part B	1x
1264	Feeder Nut Holder	1x
1279	Feeder Ring	1x
1814	Feeder Knurled Wheel	1x
1816	Feeder Lever A	1x
1817	Feeder Lever B	1x



1021 Ball Bearing 688-2RS



1140 Feeder Spring DR2110



1212 Setscrew m3x3



1258 Feeder Part A



1259 Feeder Part B

# SPARE PARTS ULTIMAKER 2 GO

## #1691 FEEDER PACK



**1264** Feeder Nut Holder



**1279** Feeder Ring



**1814** Feeder Knurled Wheel



**1816** Feeder Lever A



**1817** Feeder Lever B

- 1152 Table Spring D2150
- 1256 Build Platform Glass Retainer Back
- 1257 Knurled Nut Platform
- 1720 Print Table Base Plate
- 1721 Print Table Glass
- 1722 Print Table Bed



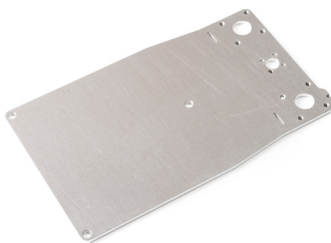
1152 Table Spring D2150



1256 Build Platform Glass Retainer Back



1257 Knurled Nut Platform



1720 Print Table Base Plate



1721 Print Table Glass

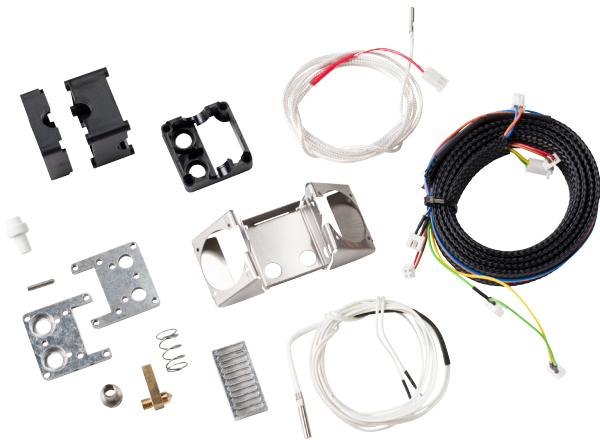


1722 Print Table Bed



# SPARE PARTS ULTIMAKER 2 GO

## #PRINT HEAD



1301	Integrated nozzle heater block 3mm	1x
1306	Hot end holder bottom	1x
1307	Hot end holder top	1x
1308	Cooling Rib Hot End	1x
1310	Hot end Isolator	1x
1311	Spring D2000	1x
1748	Print Head Top Single Hole	1x
1321	Print Head Middle	1x
1322	Print Head Bottom	1x
1357	DIN 913 M3x14	1x
1364	PTFE Isolator Coupler Glass Filled 3.2 mm	1x
1365	Dual fan bracket safety	1x
1366	PTFE Coupler Ring	1x
1732	Print Head Cable	1x
1745	PT100B sensor	1x
1746	Heater Cartridge 24V 25W	1x



1301 Integrated nozzle heater block 3mm filament



1306 Hot end holder bottom



1307 Hot end holder top



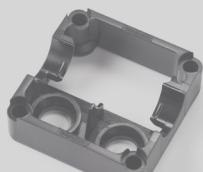
1308 Cooling Rib Hot End



1310 Hot end Isolator



1311 Spring D2000



NEW PHOTO  
COMING SOON

1748 Print Head Top



1321 Print Head Middle



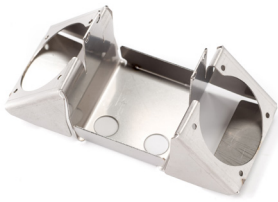
1322 Print Head Bottom



1357 DIN 913 M3x14



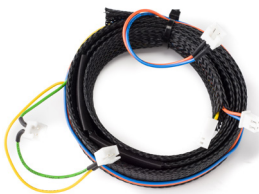
**1364** PTFE Isolator Coupler Glass Filled 3.2 mm



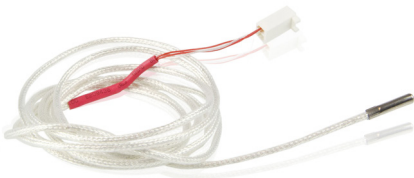
**1365** Dual fan bracket safety



**1366** PTFE Coupler Ring



**1732** Print Head Cable



**1745** PT100B sensor



**1746** Heater Cartridge 24V 25W

**1069** Tube Coupling Collet

**1071** Clamp Clip

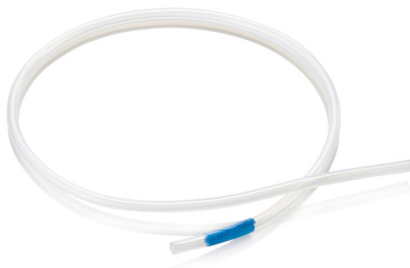
**1747** Bowden tube



**1069** Tube Coupling Collet



**1071** Clamp Clip



**1747** Bowden tube

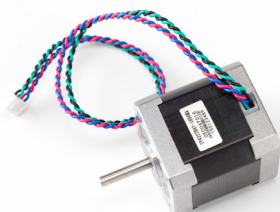
- 1241 Motor Spacer UM2
- 1741 X,Y motor
- 1742 Feeder Motor



1241 Motor Spacer UM2



1741 X,Y motor



1742 Feeder Motor

- 1162 Limit Switch, Blue Wire
- 1163 Limit Switch, Red Wire
- 1707 Limit Switch, Black Short Wire



1162 Limit Switch, Blue Wire



1163 Limit Switch, Red Wire

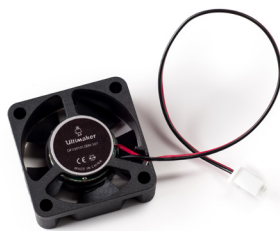


1707 Limit Switch, Black Short Wire

# SPARE PARTS ULTIMAKER 2 GO

## #1699 FAN PACK

1313	Model Cooling Fan 12VDC 0.1 A	2x
1330	Hot-end Cooling Fan 5VDC 0.08A	1x

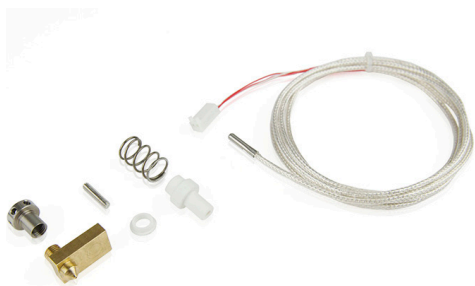


1313 Model Cooling Fan 12VDC 0.1 A

1330 Hot-end Cooling Fan 5VDC 0.08A

# SPARE PARTS ULTIMAKER 2 GO

## #1552 HOT END PACK



1301	nozzle + heaterblock	1x
1310	hot end isolator	1x
1311	spring D2000 1311	1x
1357	DIN 913 M3x14	1x
1364	PTFE Isolator Coupler Glass Filled 3.2 mm	1x
1366	PTFE Nozzle Ring	1x
2225	PT100 B sensor	1x



1301 Nozzle+Heaterblock



1310 Hot End Isolator



1311 Spring D2000



1357 DIN 913 M3x14



1364 PTFE Isolator Coupler Glass Filled 3.2 mm.



# SPARE PARTS ULTIMAKER 2 GO

## #1552 HOT END PACK



1366 PTFE Nozzle Ring



2225 PT100 B sensor

# SPARE PARTS ULTIMAKER 2 GO

## #POWER SUPPLY UNIT



1237 Power Adapter 24v-120W



1805 Power Cable EU Type C13



1806 Power Cable UK Type C13



1807 Power Cable AU Type C13



1808 Power Cable US Type C13

# SPARE PARTS ULTIMAKER 2 GO

#ADDITIONAL



1144 USB Cable



1226 Grease for Z-screw



1281 Braided Sleeve Clip



1227 Hex Key Screwdriver 2



1363 Ferrite Core



1400 Hex Key Wrench 1.5

# SPARE PARTS ULTIMAKER 2 GO

#ADDITIONAL



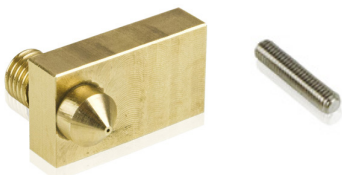
**1401** Hex Key Wrench 2



**1402** Hex Key Wrench 2.5



**1710** LED Strip Cold White



**9430** Integrated nozzle heater block 3mm filament  
+ 1257 Set screw

# SPARE PARTS ULTIMAKER 2 GO

## #PACKAGING

### 9431 UM2 Go Packaging

Excluding the printer, content of the Accessory box and the roll of filament.

- 9130 UM2 Go, Box
- 9132 UM2 Go, Bottom Foam
- 9133 UM2 Go, Top Foam
- 9134 UM2 Go, Lid Foam
- 9135 UM2 Go, Strap 40mm x 1,9m
- 9136 UM2 Go, Test Print Label
- 9137 UM2 Go, Side Label
- 9138 UM2 Go, Buckle 40mm (Male and Female)
- 9140 UM2 Go, Buckle Strap

