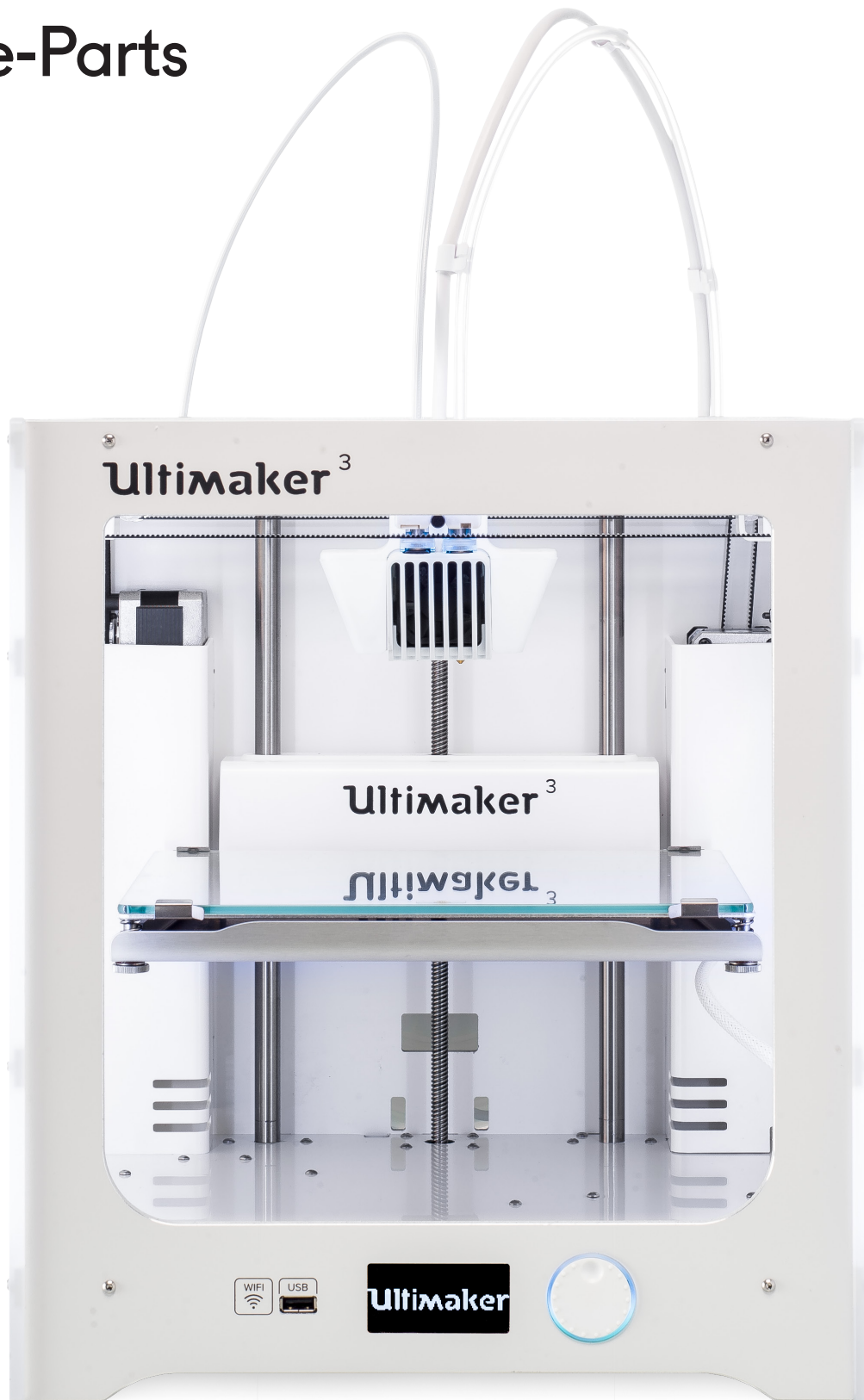


# Ultimaker 3

## Spare-Parts



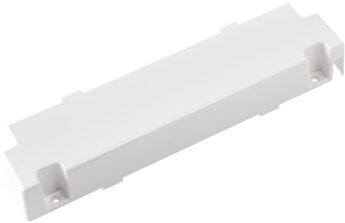
Version 1.2  
13/06/18

# Spare Parts Ultimaker 3

## Housing



**1156** Z-Shaft Cap Bottom



**1901** Controller Electronics Cover



**1902** Main Board Electronics Cover



**1903** Cable Cover



**1904** Wifi Cover



**1905** Print Table Back Cover

# Spare Parts Ultimaker 3

## Housing



**1907** Camera bracket



**1941** Back Panel



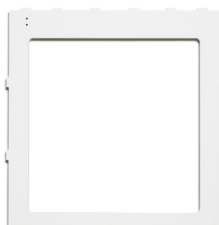
**1942** Left Panel



**1943** Right Panel



**1944** Bottom Panel



**1945** Top Panel

# Spare Parts Ultimaker 3

## Housing



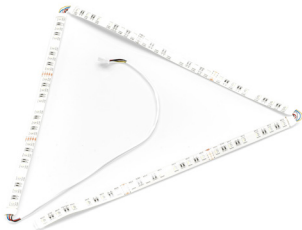
**1946** Front Panel



**1985** Diffuser Long



**1986** Diffuser Short



**2013** RGBW LED Strip



**2050** Nozzle switching bay

# Spare Parts Ultimaker 3

## Axis



**1011** Y-linear Shaft



**1012** X-linear Shaft



**1159** Z-Motor with Trapezoidal Lead Screw



**1169** Z-Linear Shaft



**1172** Print Head Shaft X



**1187** Trapezoidal Lead Nut

# Spare Parts Ultimaker 3

## Axles



**2147** Print head shaft Y 6h5

# Spare Parts Ultimaker 3

## Bearings



**1056** Sintered Bushing



**1170** Square Flanged Linear bearing LMK12LUU



**1220** Ball Bearing F688-2RS



**2123** Linear bearing LMK6 double



**2128** Linear Bearing LMKW6 short

# Spare Parts Ultimaker 3

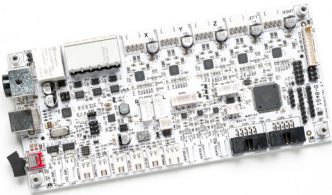
## Electronics



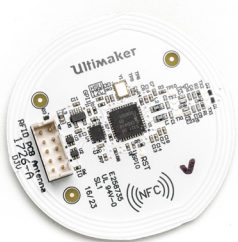
**1315** Jumper



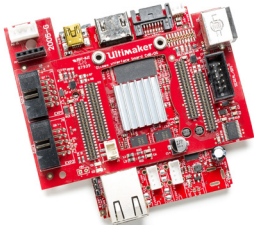
**1363** Ferrite Core



**1548** Ultimainboard



**1726** NFC PCB Antenna



**1782** Olimex Board Assembly UM3

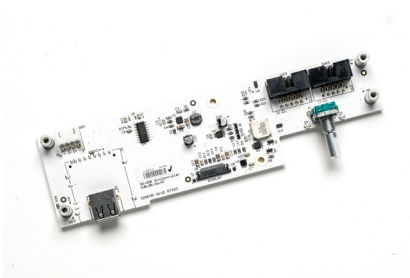


**1796** Antenna 2.4Ghz / 5GHz



# Spare Parts Ultimaker 3

## Electronics



**1994** USB Ulticontroller board



**2004** Wifiboard



**2012** Print Head Board



**2015** Capacitive sensor Board



**2078** Thermal conductive pad Olimex



**2154** Thermal Conductive Pad

# Spare Parts Ultimaker 3

## Fan



**2133** Axial fan 35x35x10



**2135** Radial fan 35x35x10

# Spare Parts Ultimaker 3

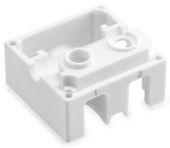
## Print Head



**1069** Tube coupling collet



**1266** Bowden Tube



**1479** Bearing Housing Middle



**1482** Side fan bracket



**1981** Print Head Cable



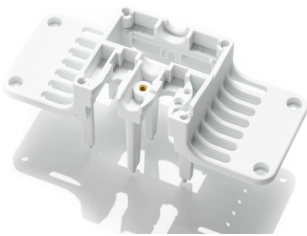
**1991** Bottom Plate

# Spare Parts Ultimaker 3

## Print Head



**2015** Capacitive sensor Board



**2022** Header Bracket



**2025** Bearing Housing Top

Available on  
short term

**2108** Front fan bracket



**2113** Front fan cover



**2116** Lifting ring

# Spare Parts Ultimaker 3

## Print Head



**2117** Lifting switch



**2130** Lifting ring spring DR1300



**2131** Printhead bowden tube exit



**2136** Hot End Magnet



**2137** Clamp clip white



**2138** Lifting ring bottom

# Spare Parts Ultimaker 3

## Print Head



**2139** Front Fan Magnet



**2151** Print head cable cover

Available on  
short term

**2158** Foam tape



**2161** Silicone nozzle cover



**2163** Magnetic field conductor

# Spare Parts Ultimaker 3

## Cables



**1024** Limit Switch Black Short Wire



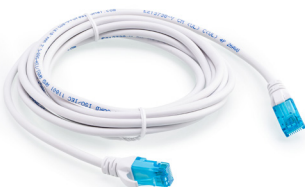
**1998** USB Ulticontroller Cable



**2007** Flat Wire Cable Olimex Interface Board



**2010** WiFi-Olimex Cable



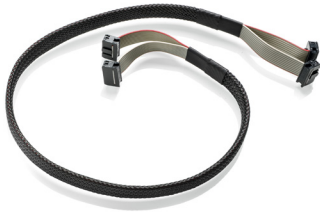
**2011** Ethernet Cable



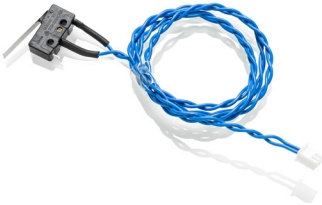
**2014** Capacitive sensor cable

# Spare Parts Ultimaker 3

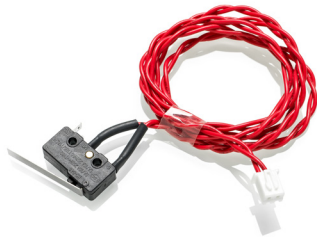
## Cables



**2017** Double flat Cable 10 Wire



**2019** Limit Switch, Blue Wire



**2020** Limit Switch, Red Wire



# Spare Parts Ultimaker 3

## Ulticontroller



**1244** Knob Front



**1245** Knob Housing



**1252** Oled Display White



**1723** Display rubber

# Spare Parts Ultimaker 3

## Motors



**1241** Motor Spacer



**2203** X,Y motor

# Spare Parts Ultimaker 3

## PSU



**1238** Power Adapter 24-220W



**1805** Power Cable EU Type C13 CE



**1806** Power Cable UK Type C13 CE



**1807** Power Cable AU Type C13 CE



**1808** Power Cable US Type C13 CE

# Spare Parts Ultimaker 3

## Belts



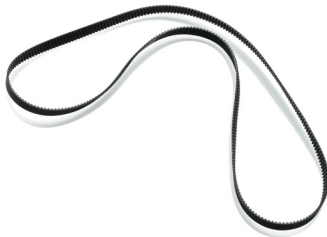
**1168** Sliding Block Spring



**1188** Timing Belt GT2 200



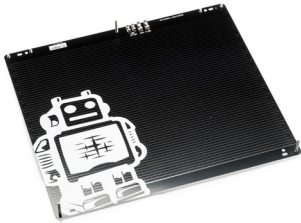
**1255** Sliding block half



**1951** Timing Belt GT2 616 mm

# Spare Parts Ultimaker 3

## Heated Bed



**1155** Print Table Heated Bed assembled



**1256** Build Platform Glass Retainer Back



**1776** Knurled Nut Print bed



**1788** Spring DR2160



**1952** Print table base plate



**1953** Cable Clip

# Spare Parts Ultimaker 3

## Heated Bed



**1987** Table Clip Front-Left



**1988** Table Clip Front-Right

Available on  
short term

**2192** Heated Bed Cable

# Spare Parts Ultimaker 3

## Pulleys



**9415** Pulley 8mm Assembly



**9416** Double Pulley 8mm Assembly



**9442** Pulley 5mm Assembly

# Spare Parts Ultimaker 3

## Reel Holder



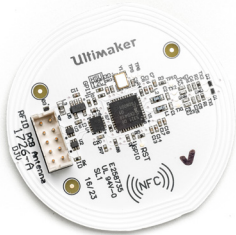
**1434** NFC enabled reel holder assembly

Available on  
short term

**1724** NFC spool holder



**1725** NFC PCB cover



**1726** NFC PCB Antenna



**1727** NFC PCB Cable



# Spare Parts Ultimaker 3

## Nuts & Bolts



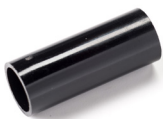
**1083** X,Y Motor Spacer, Black 3,2x6x11



**1174** Spacer 8.2x10x8



**1175** Spacer 8.2x10x3



**1178** Spacer 8,2x10x25



**1200** ISO 7380 M3x8



**1201** Washer M3

# Spare Parts Ultimaker 3

## Nuts & Bolts



**1202** ISO 7380 M3x10



**1203** ISO 7380 M3x12



**1204** ISO 7380 M3x16



**1206** ISO 7380 M3x20



**1207** ISO 7380 M3x25



**1209** Nut M3

# Spare Parts Ultimaker 3

## Nuts & Bolts



**1213** DIN 562 Square Nut M3 A2



**1214** ISO 7040 Nut M3 Prev. Torque A2



**1217** ISO 7380 rvs M4x10 A2



**1287** Washer M7



**1288** Washer M6



**1292** DIN 7380 M3x6

# Spare Parts Ultimaker 3

## Nuts & Bolts



**1354** ISO 724 Hex nut M7



**1545** Spacer 3.2x6x3



**1733** Spacer 3,2x6x7



**1948** Spacer 3.2x5x8



**1971** Threaded standoff



**2037** DIN912 M2.5x4

# Spare Parts Ultimaker 3

## Nuts & Bolts



**2039** DIN912 M2,5x25



**2075** Spacer 3.2x6x1



**2076** Hex standoff M2,5 x12



**2142** DIN 912 M2.5x8



**2144** DIN912 M2.5x75



**2152** Hex socket head remform screw 2.5 x 6

# Spare Parts Ultimaker 3

## Nuts & Bolts



**2153** DIN 912 M2.5x35

# Spare Parts Ultimaker 3

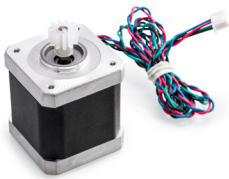
## Assembly



**1434** NFC enabled reel holder assembly



**1435** Filament guide assembly



**9470** FEEDER MOTOR Assembly



**9529** Ultimaker Print Core AA 0.4



**9530** Ultimaker Print Core BB 0.4



**9531** Ultimaker Print Core AA 0.8

# Spare Parts Ultimaker 3

## Assembly



**9532** Ultimaker Print Core BB 0.8



**200454** Ultimaker Print Core AA 0.25



**9680** Box UM3 Assembly

Available on  
short term

**9682** Feeder UM3 Left Assembly



**9684** Printhead Assembly



**9685** Feeder UM3 Right Assembly



# Spare Parts Ultimaker 3

## Assembly



**9689** Camera UM3 Assembly

# Spare Parts Ultimaker 3

## Additional



**1154** Print Table Glass



**1227** Hex Screwdriver 2mm



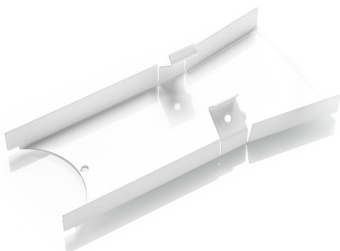
**1278** Glue Stick



**1294** Keep Hands Clear Sticker



**1363** Ferrite Core



**1728** NFC PCB Cable Cover

# Spare Parts Ultimaker 3

## Additional



**1894** ESD warning sticker



**2069** Header cable clip



**2073** USB stick



**2083** Machine Oil



**2084** Magnalube Reclosable



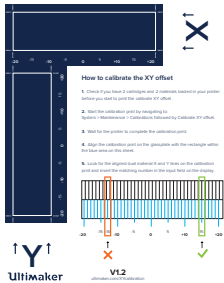
**2297** Cleaning filament

# Spare Parts Ultimaker 3

Additional



**9127** Getting Started Sheet UM3



**9153** XY Calibration Sheet



**9241** Calibration Card