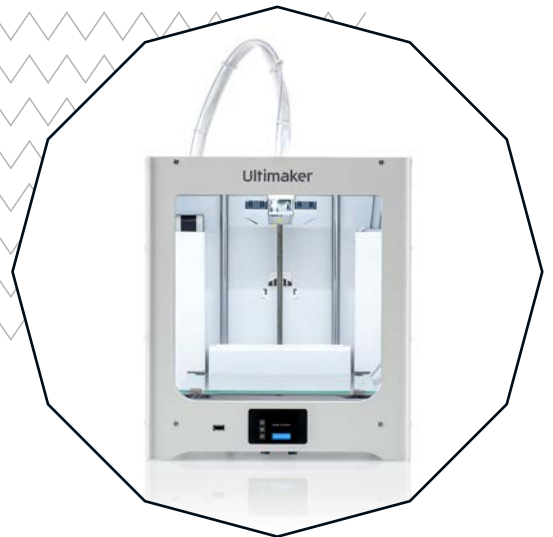
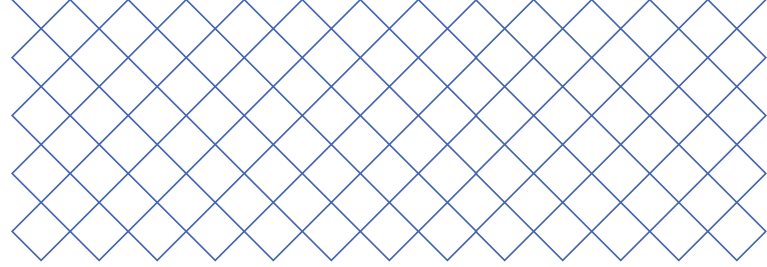




# Ultimaker 2+ Connect Spare parts catalog



# Table of contents



## Ultimaker 2+ Connect accessories and add ons

Accessories	3
Packaging	6
Power adapter and cables	7
Documents	9

## Ultimaker 2+ Connect spare parts and assemblies

Housing	10
Axles	14
Gantry	15
Motors	17
Print head	19
Feeder	24
Z stage	25
Electronics	28
Cables	29
Nuts & bolts	32

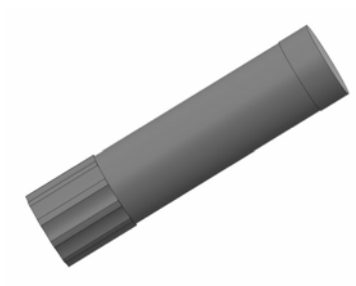
# Accessories



## 1227 Hex screwdriver 2 mm

Hex Screwdriver 2mm

Required screwdriver for most repairs on Ultimaker 3D printers



## 1278 Glue stick

Glue stick

Apply a layer of glue to the build plate for optimal print adhesion



## 1402 Hex key 2.5 mm

Hex Key Wrench 2.5

Used for M4 bolts, such as on the square flanged linear bearings



## 2073 USB stick

USB Stick

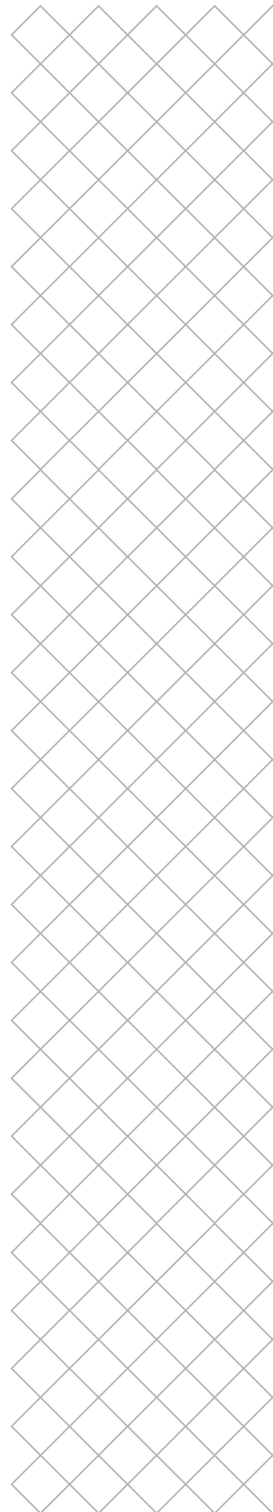
Save print files to USB for offline printing



## 2083 Machine oil

Machine Oil

This oil is for lubricating the smooth axles on the Ultimaker 2+ Connect



# Accessories



## 2084 Magnalube

Magnalube Reclosable

This grease is for lubrication the Z motor's trapezoidal lead screw



## 2321 Nozzle wrench 7 mm

Nozzle spanner 7mm

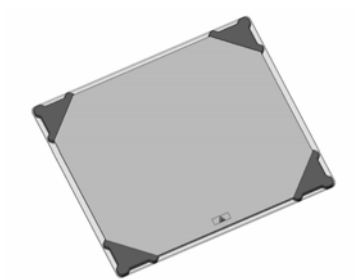
Use this wrench to change the nozzle on the Ultimaker 2+ Connect



## 9341 Print head calibration aid

Print head alignment aid (user)

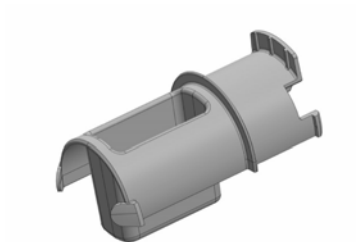
Use this tool to ensure the correct distance between the hot end holders after a print head repair



## 214421 Glass plate

Packaged glass plate

Glass build plate for the Ultimaker 2+ Connect with protective corners



## 217570 Spool holder

Short reel holder

White single spool holder for the Ultimaker 2+ Connect

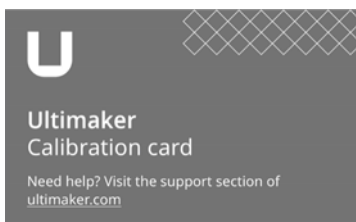
# Accessories



## 217599 Ethernet cable L3000

STP ethernet cable L3000

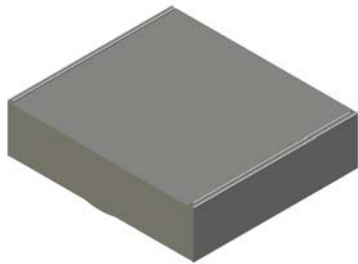
Connect the Ultimaker 2+ Connect to a local area network with this Ethernet cable



## 219569 Calibration card

Calibration card

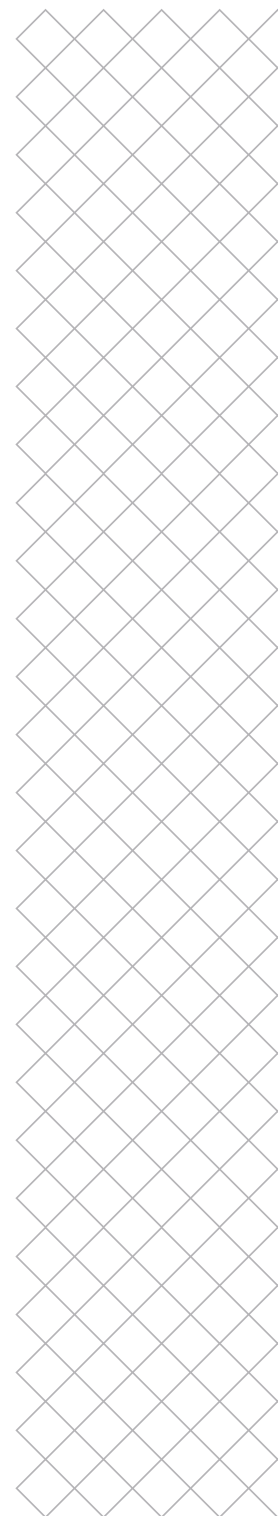
Use the calibration card during the bed leveling procedure to ensure the correct distance between the nozzle and build plate



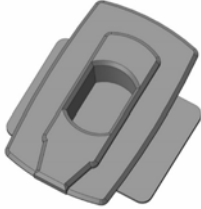
## 226740 Accessory box Ultimaker 2+ Connect

Ultimaker 2+ Connect accessory box service

Complete accessory box for the Ultimaker 2+ Connect



# Packaging



## 206688 Box locking clip

S5Pkg Box locking clip

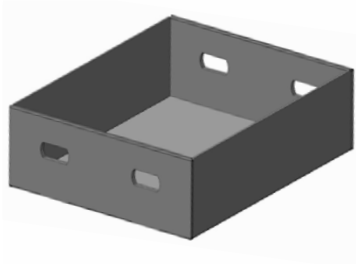
Four of these clips secure the packaging of the Ultimaker 2+ Connect



## 224348 Outer box Ultimaker 2+ Connect

UM2+ Connect Outerbox

The outer sleeve / box for the Ultimaker 2+ Connect



## 224349 Tray Ultimaker 2+ Connect

UM2+ Connect Cap

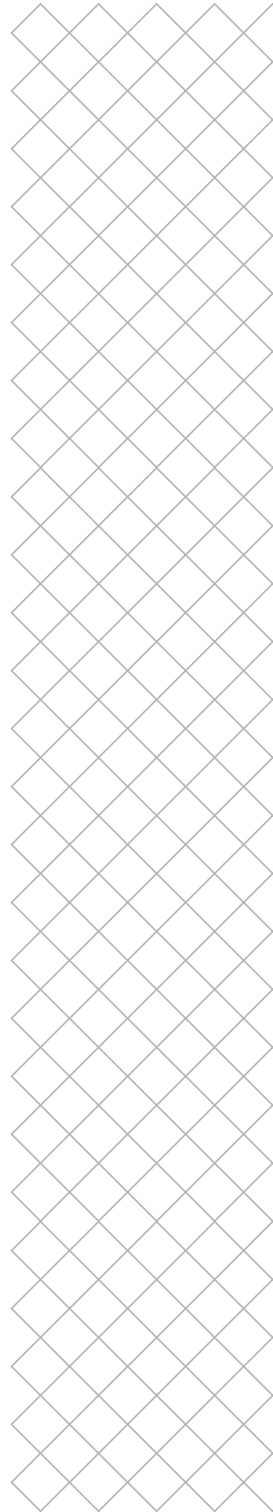
Part of the Ultimaker 2+ Connect packaging:  
Bottom and top tray



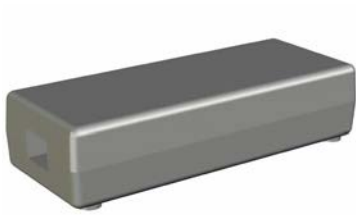
## 226742 Packaging assembly

Ultimaker 2+ Connect packaging assembly

Complete packaging assembly for the Ultimaker 2+ Connect, including outer box, trays, and foam pieces



# Power adapter and cables



## 1238 Power adapter 24-220W

Power adapter 24-220W

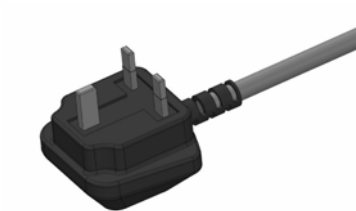
Power adapter for the Ultimaker 2+ Connect



## 1805 Power cable EU

Power Cable EU Type C13 CE

Power cable for the Ultimaker 2+ Connect  
Type EU



## 1806 Power cable UK

Power Cable UK Type C13 CE

Power cable for the Ultimaker 2+ Connect  
Type UK



## 1807 Power cable AU

Power Cable AU Type C13 CE

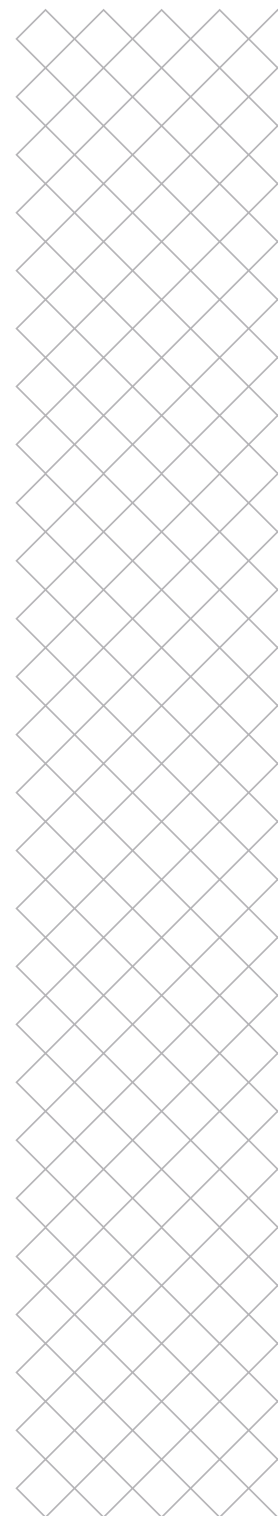
Power cable for the Ultimaker 2+ Connect  
Type AU



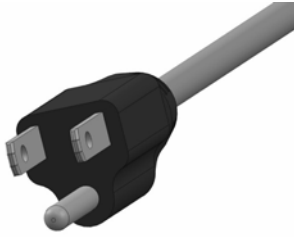
## 1808 Power cable US

Power Cable US Type C13 CE

Power cable for the Ultimaker 2+ Connect  
Type US



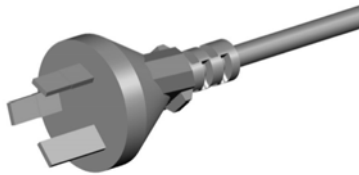
# Power adapter and cables



## 1819 Power cable JPN

Power Cable JPN Type C13 PSE

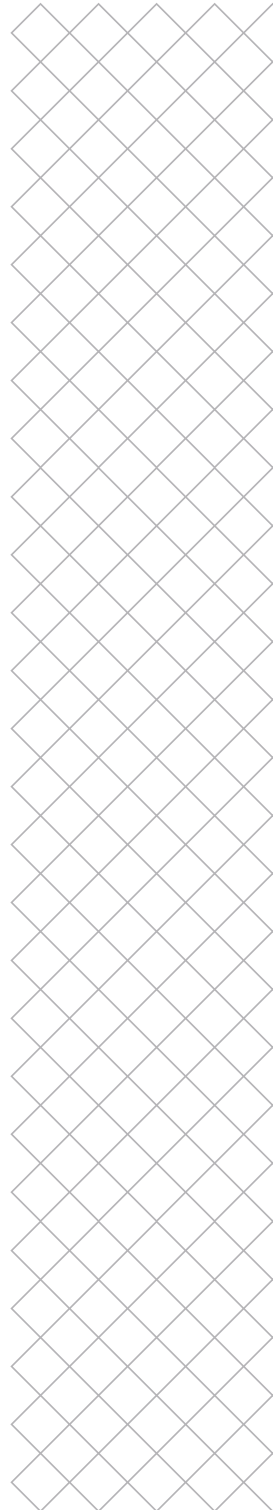
Power cable for the Ultimaker 2+ Connect Type JPN



## 202091 Power cable ARG

Power Cable ARG Type C13 CE

Power cable for the Ultimaker 2+ Connect Type ARG





# Documents



## 222946 Quick start guide

Quick start guide Ultimaker 2+ Connect

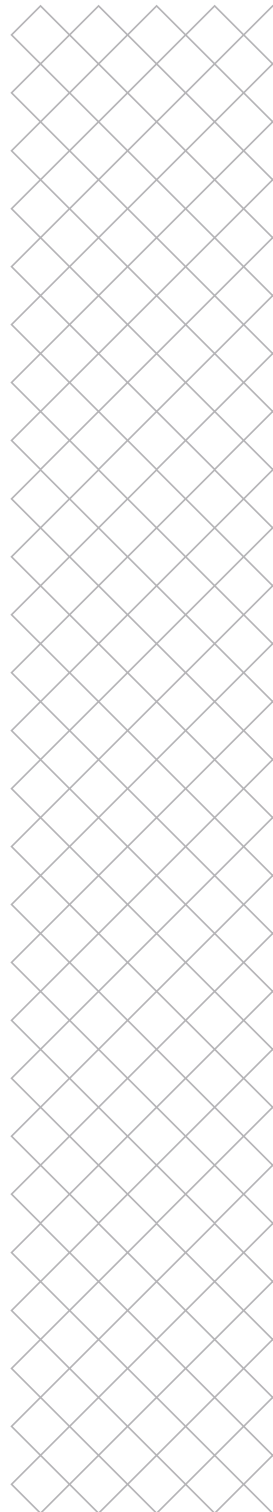
Quick start guide booklet for the Ultimaker 2+ Connect. Content available in 21 languages



## 222947 Safety and warranty information

Safety and warranty information Ultimaker 2+ Connect

Safety and warranty information for the Ultimaker 2+ Connect. Content available in 21 languages



# Housing



## 1220 Ball bearing 8 mm

Ball Bearing F688-2RS

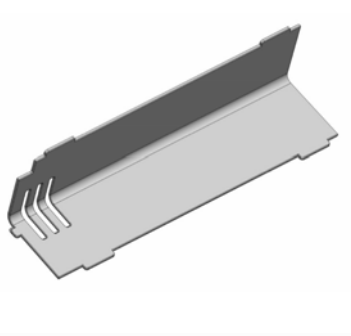
Frame bearings for the X and Y axes



## 1294 Warning sticker: Keep hands clear

Keep Hands Clear Sticker

ISO 7010 W024 icon. This sticker is placed on the bottom panel of the Ultimaker 2+ Connect



## 1903 Motor cover

Cable Cover

These plastic covers shield the motors and cables of the Ultimaker 2+ Connect



## 2478 Z cap metal

Z-Cap metal

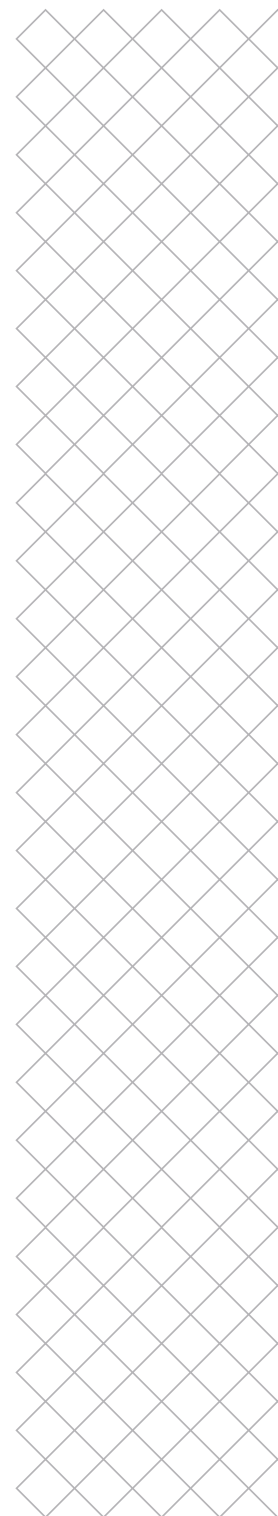
Metal cap to hold the Z axle in place



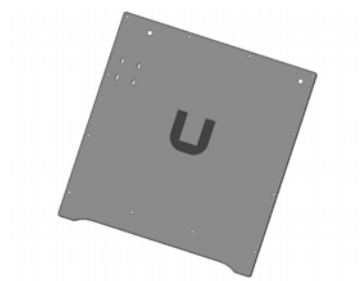
## 2500 Z cap with inserts

Z-Cap With Inserts

Plastic cap with inserts to align and hold the Z axle in place



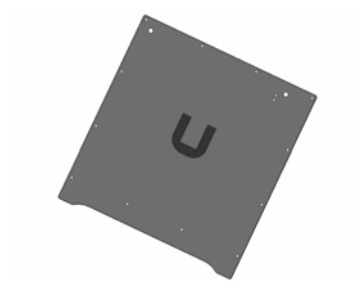
# Housing



## 214595 Left panel

Left panel UM2+ Connect

Frame: Left panel for the Ultimaker 2+ Connect



## 214598 Right panel

Right panel UM2+ Connect

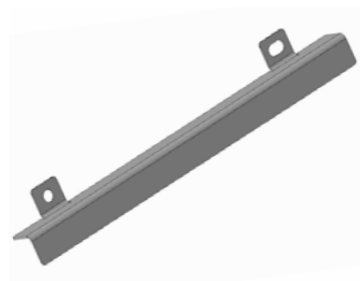
Frame: Left panel for the Ultimaker 2+ Connect



## 215807 Cable cover LED strip

UM2+ Connect Cable cover LED strip

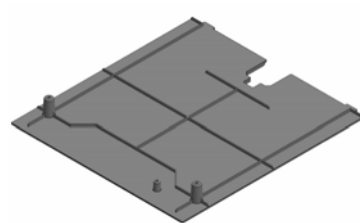
Sheet metal cover for over the LED strip wires



## 215808 Cable cover Air Manager sensor

UM2+ Connect Cable cover top sensor

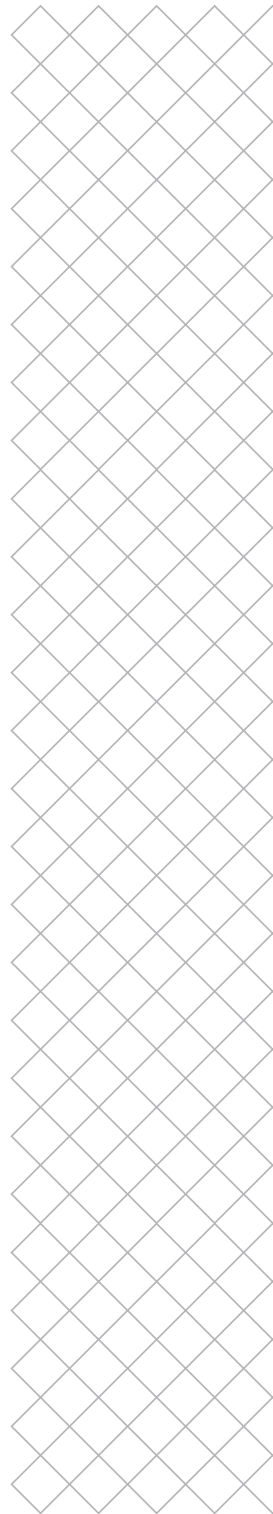
Sheet metal cover for over the Air Manager sensor cable



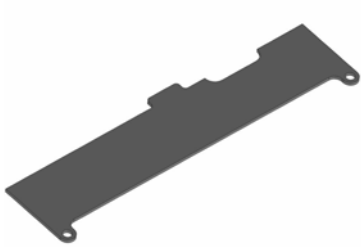
## 216566 Bottom plate

Bottom plate UM2+ Connect

The bottom plate of the Ultimaker 2+ Connect that shields the electronics



# Housing



**220490 Display cover**  
Display cover UM2+ Connect

Small plastic cover to place over the back of the display against the front panel



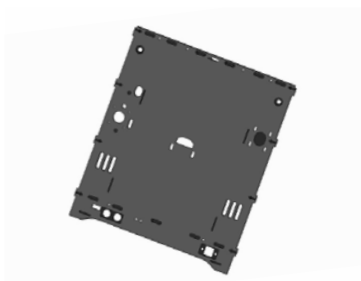
**222604 Display spacer**  
Sheet metal spacer

Metal spacer on which the touchscreen display is mounted



**224467 ESD connector**  
UM2+ Connect ESD Connector

Small metal connector to ensure a ground connection for the Y motor



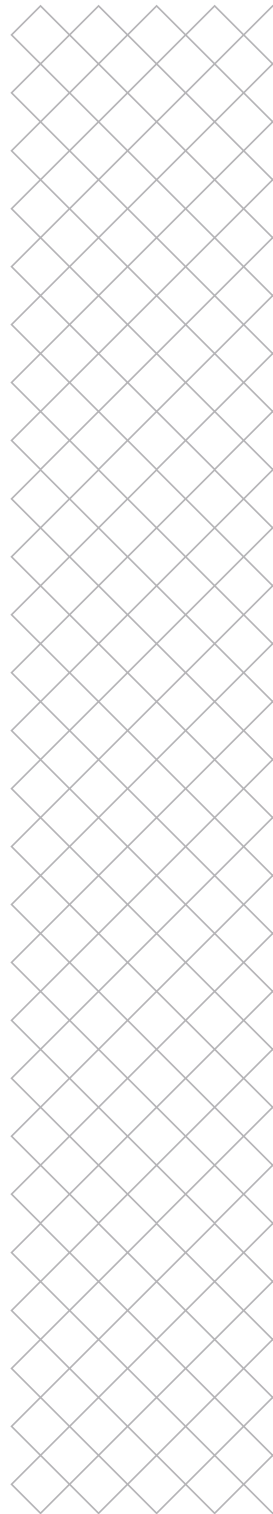
**225852 Back panel service assembly**  
Back panel assembly for service

Frame: Back panel for the Ultimaker 2+ Connect including inserts

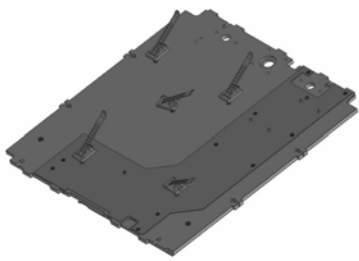


**225853 Front panel service assembly**  
Front panel assembly for service

Frame: Front panel for the Ultimaker 2+ Connect including inserts and magnets



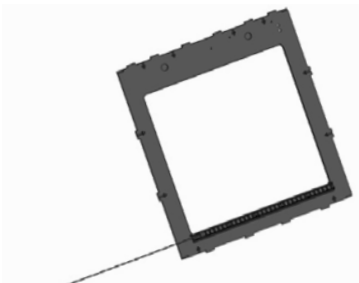
# Housing



## 225855 Bottom panel service assembly

Bottom panel assembly for service

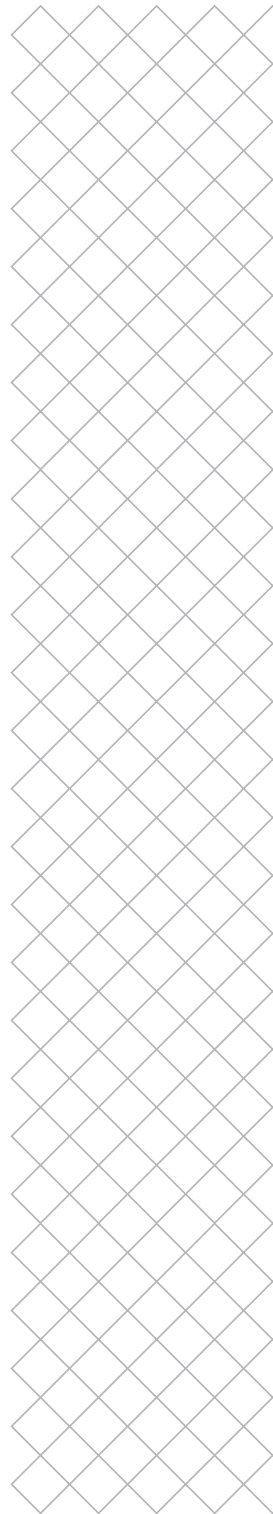
Frame: Bottom panel for the Ultimaker 2+ Connect including warning sticker, inserts, ESD protection plate, and cable clips



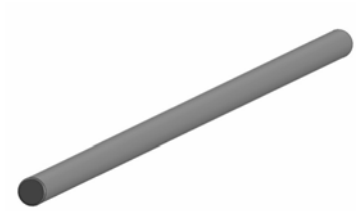
## 225858 Top panel service assembly

Top panel assembly for service

Frame: Top panel for the Ultimaker 2+ Connect including LED strip and profile



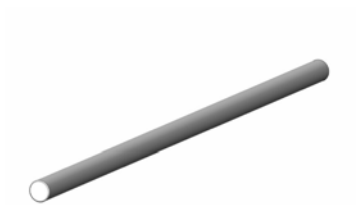
# Axles



## 1012 X linear shaft L337

X-Linear Shaft

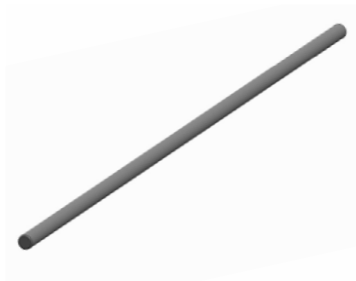
Frame X axle for the Ultimaker 2+ Connect with 8 mm diameter



## 1169 Z linear shaft L337

Z-Linear Shaft

Z axle for the Ultimaker 2+ Connect with 12 mm diameter



## 1172 Print head shaft X L320

Print Head Shaft X

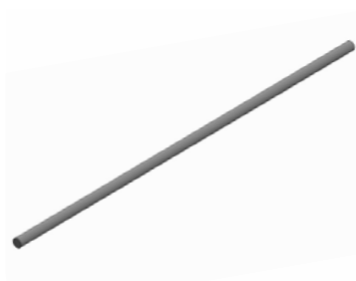
Print head shaft X for the Ultimaker 2+ Connect with 6 mm diameter



## 1173 Print head shaft Y L300

Print Head Shaft Y

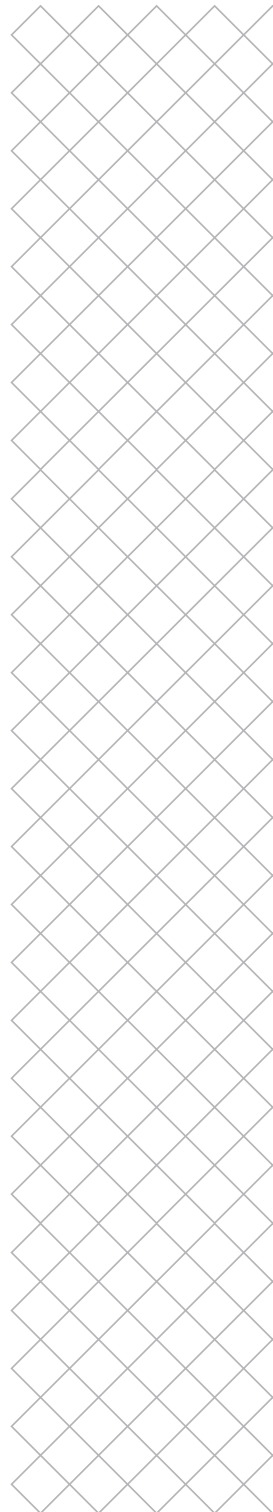
Print head shaft Y for the Ultimaker 2+ Connect with 6 mm diameter



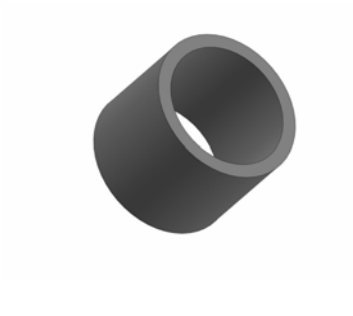
## 215696 Y linear shaft L357

Shaft Ø8f8 L357

Frame Y axle for the Ultimaker 2+ Connect with 8 mm diameter



# Gantry



## 1174 Spacer 8 mm

Spacer 8.2x10x8

Pulley spacer for the gantry, 8 mm



## 1175 Spacer 3 mm

Spacer 8.2x10x3

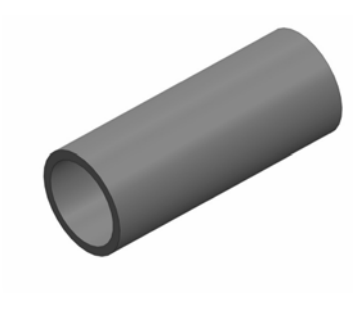
Pulley spacer for the gantry, 3 mm



## 1177 Spacer 10 mm

Spacer 8.2x10x10

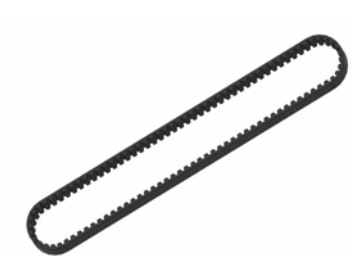
Pulley spacer for the gantry, 10 mm



## 1178 Spacer 25 mm

Spacer 8,2x10x25

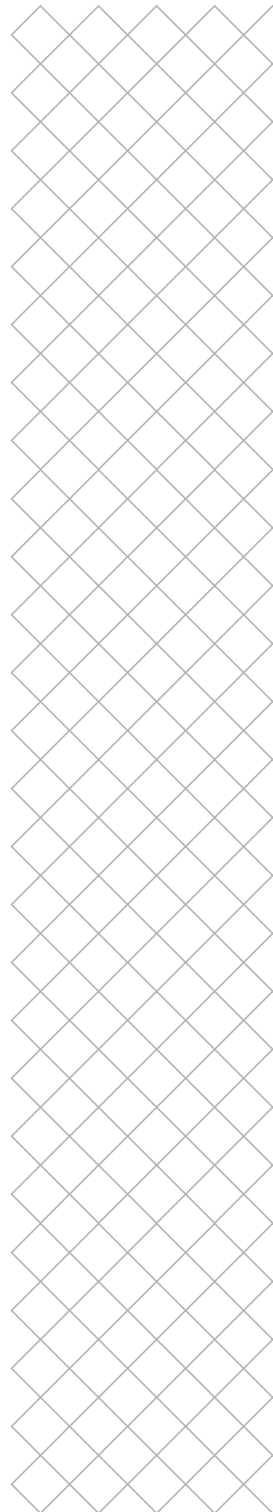
Pulley spacer for the gantry, 25 mm



## 1758 Short belt S2M L200

Timing Belt S2M 200

Short timing belt attached to the X and Y motors



# Gantry



## 9415 Pulley 8 mm

Pulley 8mm Assembly

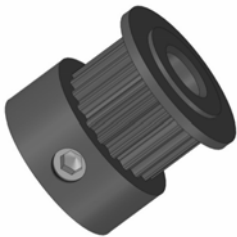
Timing pulley 8 mm including set screw



## 9416 Double pulley 8 mm

Double Pulley 8mm Assembly

Double timing pulley 8 mm including set screw



## 9442 Pulley 5 mm

Pulley 5mm Assembly

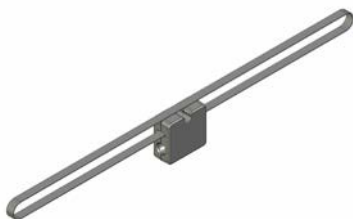
Motor timing pulley 5 mm including set screw



## 208133 Motor spacer

Spacer stepper

Plastic spacer to secure the X and Y motors to the frame



## 225586 Sliding block 616 assembly

Sliding block 616 service

Complete sliding block assembly including the 616 mm timing belt



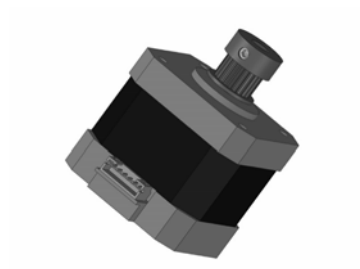
# Motors



## 215582 Z motor with nut

Z motor with nut

Z motor with trapezoidal lead screw.  
Includes lead nut (1187), does not include cable



## 225713 XY motor assembly

XY Motor assembly S3/S5R2 service

X and Y motor assembly with the 5 mm pulley (9442)  
mounted. Does not include cable



## 225715 Feeder motor assembly

Feeder motor assembly S3/S5 service

Feeder motor assembly with the feeder gear  
mounted. Does not include cable



## 208133 Motor spacer

Spacer stepper

Plastic spacer to secure the X and Y  
motors to the frame



## 214620 Stepper motor cable L490

Stepper motor cable L490

Motor cable with length 490 mm, used for the Y motor

# Motors



## 214623 Stepper motor cable L670

Stepper motor cable L670

Motor cable with length 670 mm, used for the X motor



## 216062 Stepper motor cable L340

Stepper motor cable L340

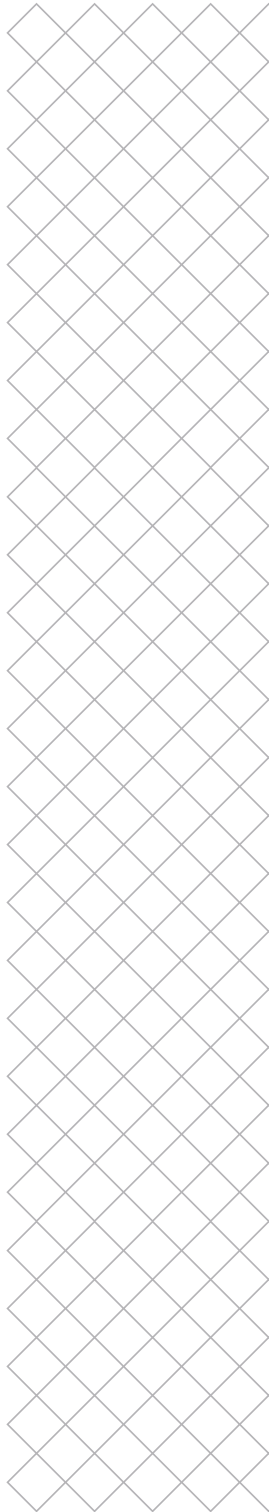
Motor cable with length 340 mm, used for the feeder motor



## 216073 Stepper motor cable L160

Stepper motor cable L160

Motor cable with length 490 mm, used for the Z motor



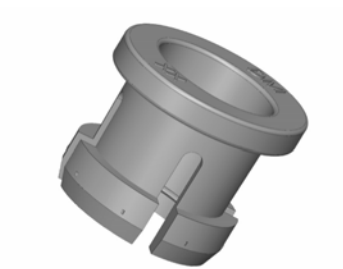
# Print head



## 1065 Print head bearing 6 mm

Linear Bearing LMUW6

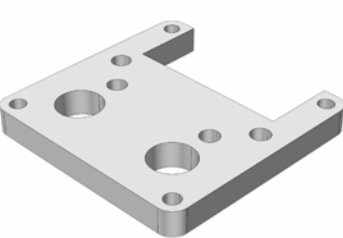
Linear bearing with 6 mm inner diameter used in the Ultimaker 2+ Connect print head



## 1069 Tube coupling collet

Tube Coupling Collet

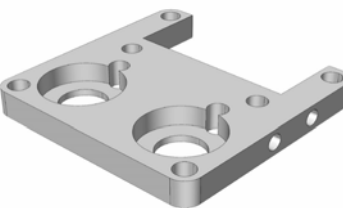
Collet with small metal blades to keep the Bowden tube in position in the feeder and print head



## 1306 Hot end holder bottom

Hot end Holder Bottom

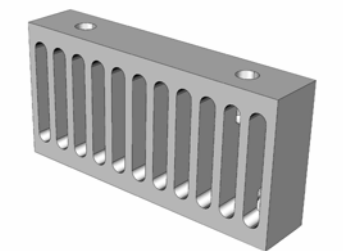
Bottom aluminum part of the Ultimaker 2+ Connect print head



## 1307 Hot end holder top

Hot end Holder Top

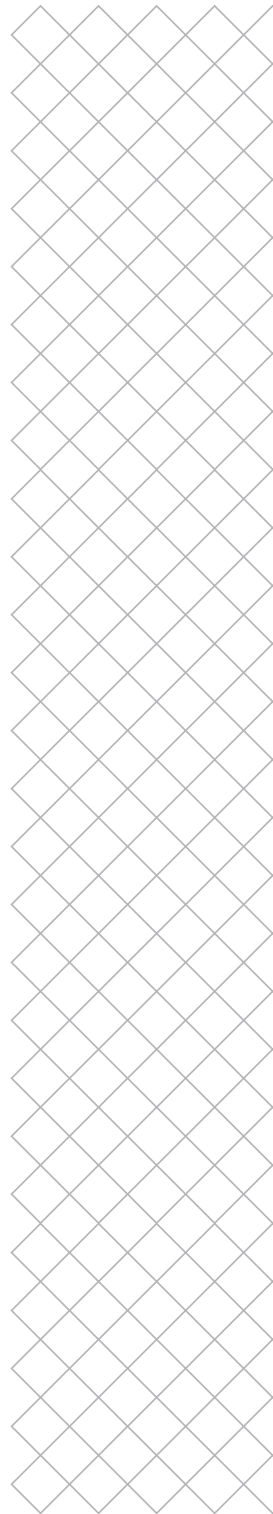
Top aluminum part of the Ultimaker 2+ Connect print head



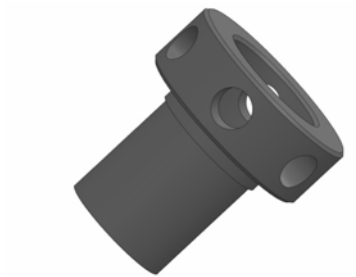
## 1308 Cooling rib hot end

Cooling Rib Hot End

Aluminum rib at the back of the Ultimaker 2+ Connect print head



# Print head



## 1310 Hot end isolator

Hot End Isolator

Metal hot end isolator which screws into the heater block



## 1313 Side fan

Model Cooling Fan 12VDC 0.1A

12 V model cooling fan. The Ultimaker 2+ Connect print head has one on each side



## 1326 Warning sticker - Hot surface

Warning Sticker

ISO 7010 W017 icon. This sticker is placed on the fan bracket of the Ultimaker 2+ Connect



## 1330 Hot end cooling fan

Hot-end Cooling Fan 5VDC 0.008A

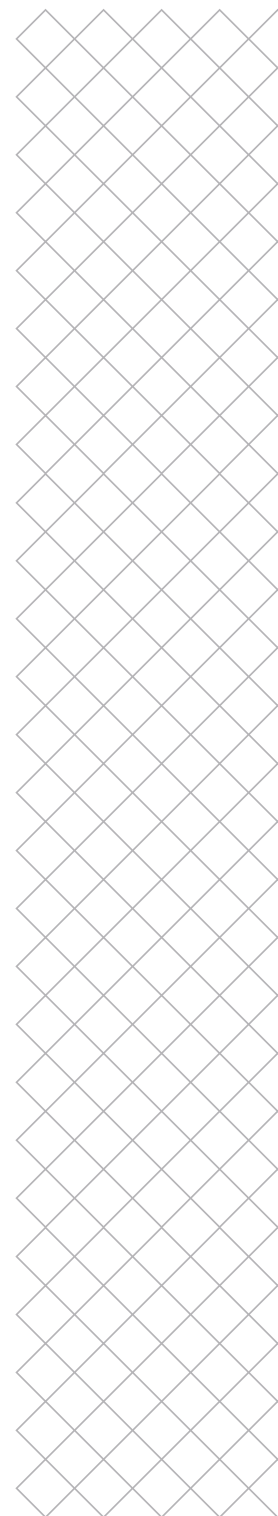
Small 5 V fan at the back of the print head to cool the hot end during printing



## 2137 Clamp clip

Clamp Clip White

Small plastic clip placed around the tube coupling collet (1069) to secure the Bowden tube in place



# Print head



## 2275 Isolator spacer 9.4mm

Isolator Spacer 9.4mm

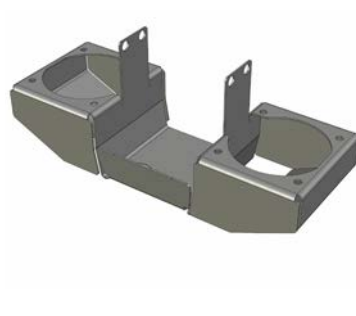
Metal spacer of fixed width above the hot end



## 2278 TFM isolator coupler

TFM Isolator Coupler

Coupler of TFM material in the hot end, placed between the isolator spacer (2275) and hot end isolator (1310)



## 2284 Fan bracket

Fan Bracket

Metal dual fan bracket that holds the side fans and closes the bottom of the print head



## 217665 Print head cable

UM2+ Connect Printhead cable

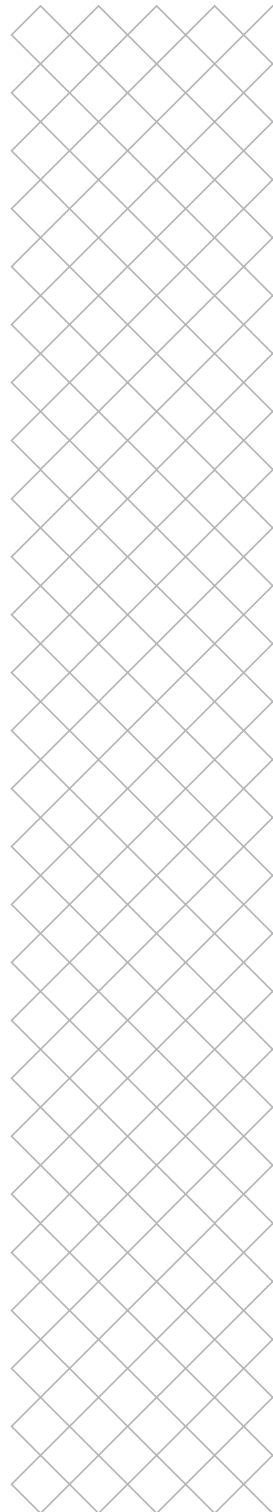
Collection of the fan cables in a white braided sleeve



## 217815 PT100 sensor L1160

PT100 with housing and cable L1160

PT100 temperature sensor for accurately measuring the nozzle temperature, length 1160 mm



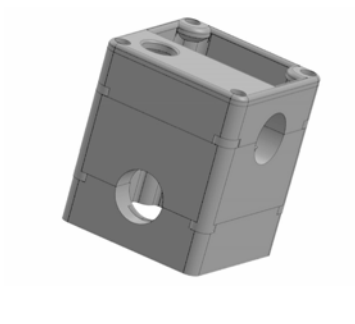
# Print head



## 217822 Heater cable L1000

Heater with cable L1000

35 W heater cartridge to heat up the nozzle, with a cable length of 1000 mm



## 220486 Print head housing

Print head housing

Set of the three white plastic pieces of the print head housing, containing top, middle, and bottom



## 225864 Print head assembly

Printhead UM2+ Connect for service

Complete print head assembly for the Ultimaker 2+ Connect, excluding Bowden tube, tube coupling collet and clamp clip (226572)



## 225874 Heater block assembly

Heaterblock assembly for service

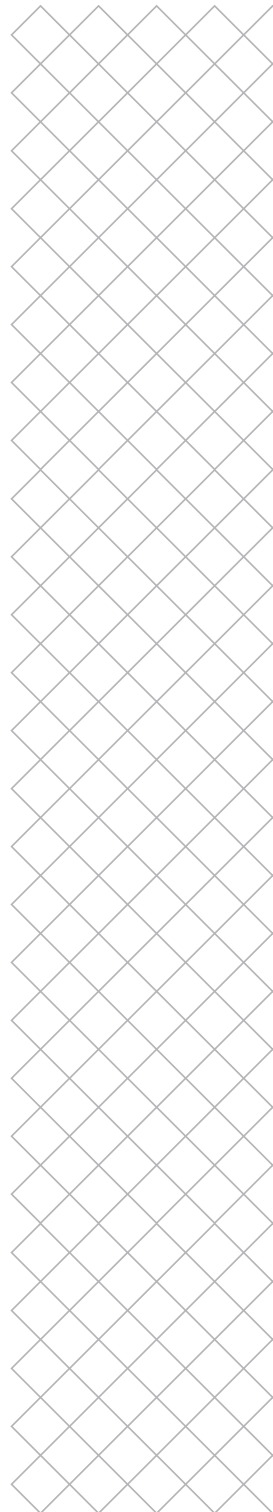
Assembly of the heater block, nozzle ring, and M3x16 bolt. Does not include nozzle



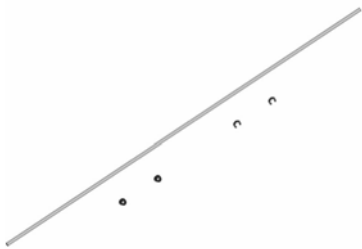
## 226571 Print head cable clip 5x

Braided sleeve clip (5x) Service assembly

Set of 5 white plastic clips to connect the Bowden tube to the print head cable



# Print head



## 226572 Bowden pack L705 marked

Bowden pack L705 with collets & clips for service

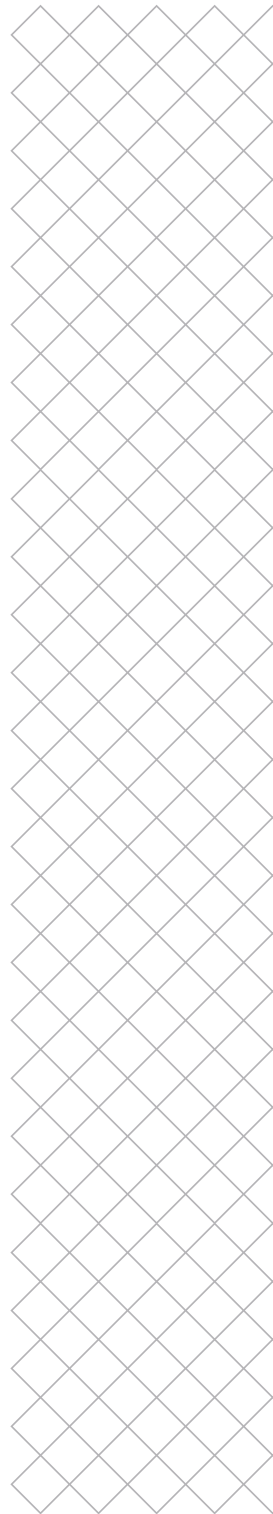
Set of one Bowden tube with chamfer and marking, two tube coupling collets (1069) and two clamp clips (2137)



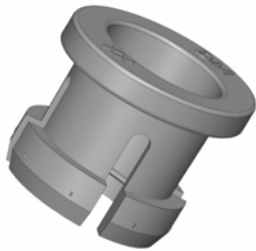
## 226573 Print head screws M3x70 4x

DIN 912 M3x70 (4x) for service

Set of four M3x70 screws for the print head



# Feeder



## 1069 Tube coupling collet

Tube Coupling Collet

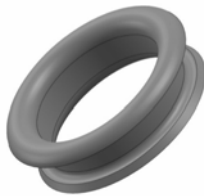
Collet with small metal blades to keep the Bowden tube in position in the feeder and print head



## 2137 Clamp clip

Clamp Clip White

Small plastic clip placed around the tube coupling collet (1069) to secure the Bowden tube in place



## 2209 Feeder ring

Feeder ring

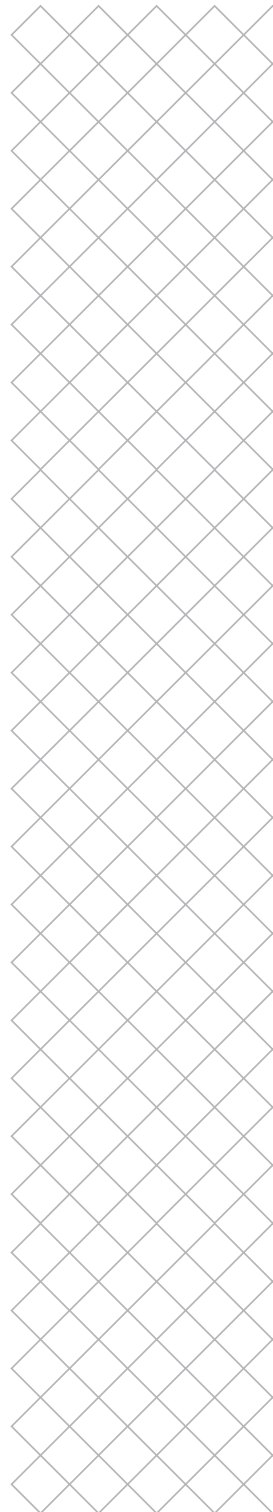
Metal ring at the bottom of the feeder to allow frictionless entry of the filament, without causing wear to the plastic feeder housing



## 225870 Feeder assembly

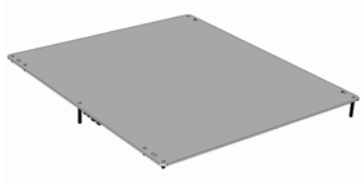
Feeder Left for service

Complete feeder assembly for the Ultimaker 2+ Connect





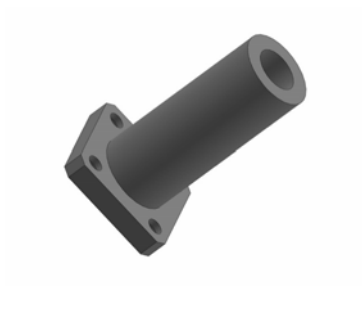
# Z stage



## 1155 Heated bed

Print table heated bed assembled

Heated build plate for the Ultimaker 2+ Connect with integrated bolts and cable connector



## 1170 Square flanged linear bearing

Square Flanged Linear bearing LHFSW12

Square flanged linear bearing with 12 mm inner diameter for the Ultimaker 2+ Connect Z stage



## 1187 Trapezoidal lead nut

Trapezoidal Lead Nut

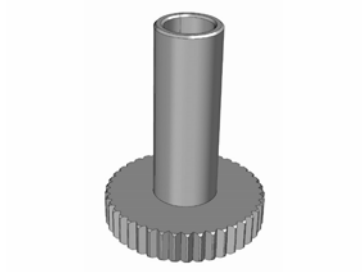
Lead to which matches the Z motor's trapezoidal lead screw to enable vertical motion of the Z stage



## 1256 Build plate clamp back

Build platform glass retainer

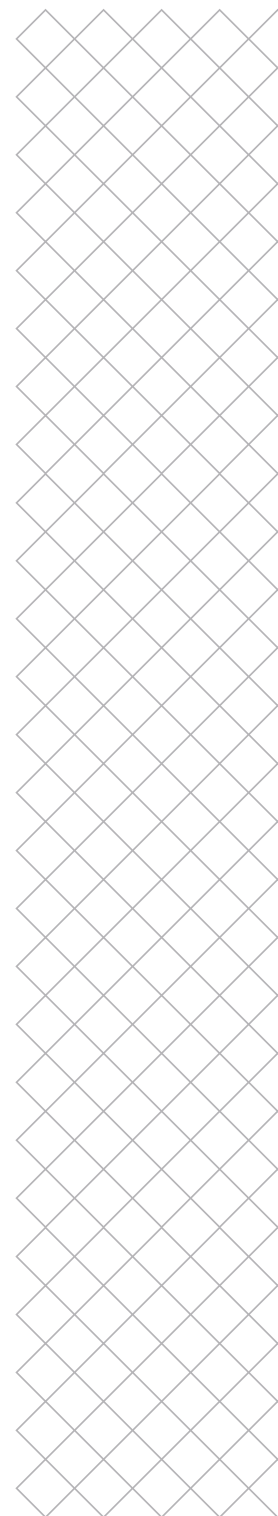
Sheet metal build plate clamp for at the back of the build plate



## 1776 Thumb wheel

Knurled nut print bed

Knurled thumb wheel used to secure and adjust the Ultimaker 2+ Connect build plate



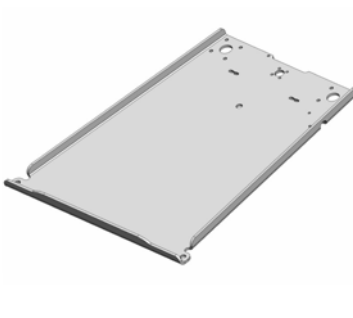
# Z stage



## 1788 Spring 8x22

Spring 8x22

Spring placed around the heated bed bolts used for adjusting the build plate position



## 1952 Print table base plate

Print Table Base Plate

Curved metal base plate of the Z stage



## 1953 Heated bed cable clip

Cable Clip

White plastic clip attached to the base plate (1952) to keep the heated bed cable (216195) in place



## 1987 Build plate clamp front-left

Table Clip Front-Left

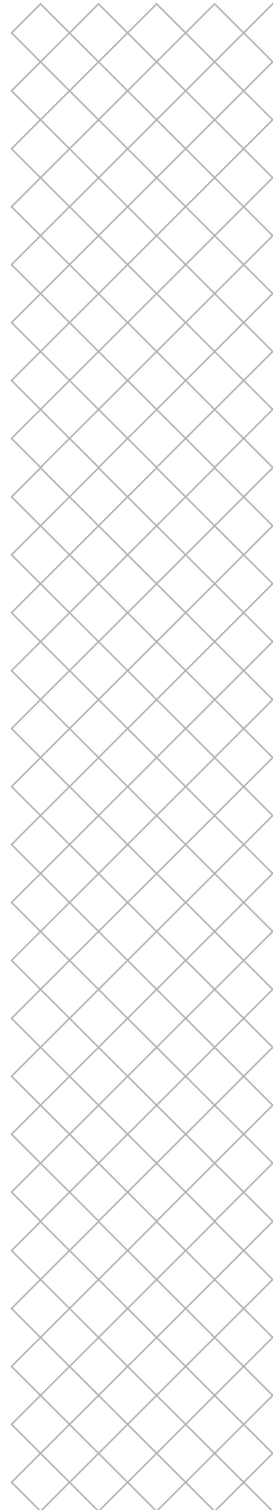
Sheet metal build plate clamp for at the front-left side of the build plate, with lip for easy opening



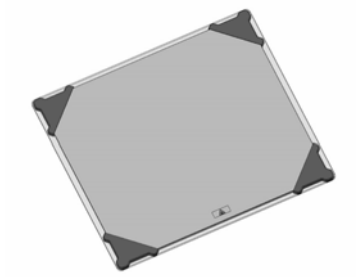
## 1988 Build plate clamp front-right

Table Clip Front-Right

Sheet metal build plate clamp for at the front-right side of the build plate, with lip for easy opening



# Z stage



## 214421 Glass plate

Packaged glass plate

Glass build plate for the Ultimaker 2+ Connect with protective corners



## 215694 Print table back cover

Print table back cover

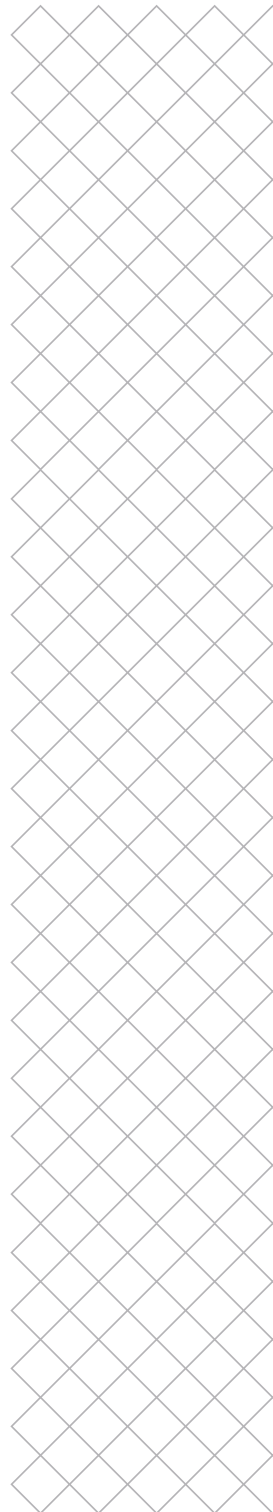
Plastic cover over the bearings at the back of the Ultimaker 2+ Connect Z stage



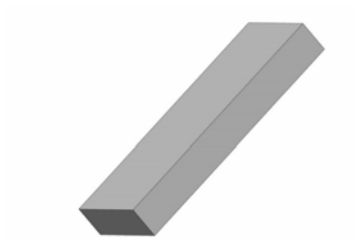
## 216195 Heated bed cable L930

Heated bed cable L930

Bundled cable of the heated bed temperature sensor and heater wires in a white braided sleeve



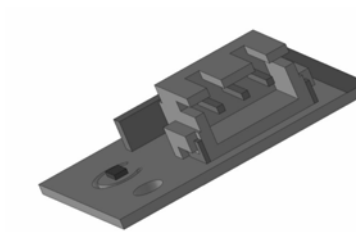
# Electronics



## 2501 Thermal conductive pad

Thermal Conductive Pad

Rectangular thermal conductive pad for under the mainboard (224502)



## 214682 Air Manager sensor

Sensors PCB

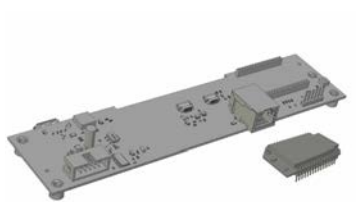
Sensor PCB at the back of the Ultimaker 2+ Connect for detecting Air Manager presence



## 215783 Touchscreen display

Screen 2,4" with coverglass

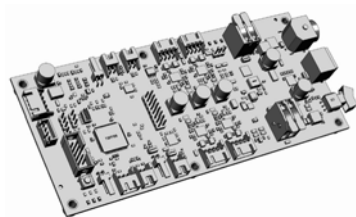
2.4" touchscreen display with flatcables and adhesive at the back



## 221542 Connectivity board

Connectivity board UM2+ Connect

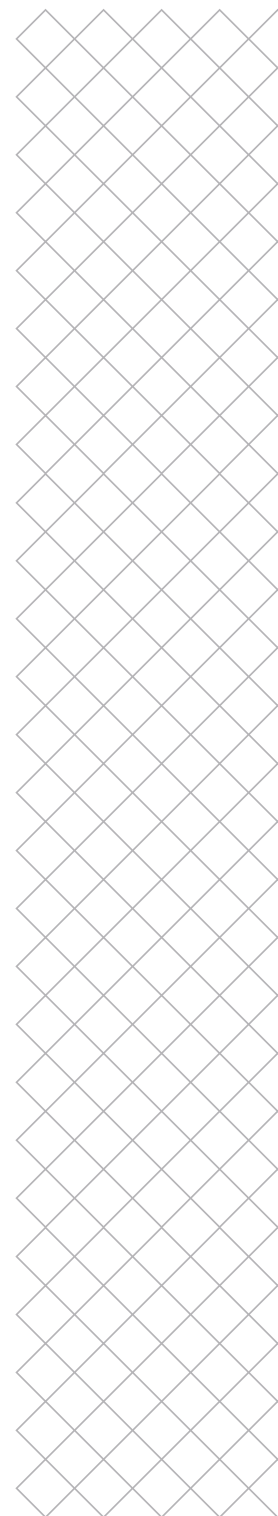
Connectivity board with USB port, display connectors, and Onion connectivity module



## 224502 Mainboard

Mainboard UM2+ Connect

Motion controller board for the Ultimaker 2+ Connect



# Cables



## 3247 Ethernet cable internal

Ethernet Cable Panel Mount

Internal Ethernet cable between the LAN port at the back of the printer and the connectivity board (221542)



## 214620 Stepper motor cable L490

Stepper motor cable L490

Motor cable with length 490 mm, used for the Y motor



## 214623 Stepper motor cable L670

Stepper motor cable L670

Motor cable with length 670 mm, used for the X motor



## 216062 Stepper motor cable L340

Stepper motor cable L340

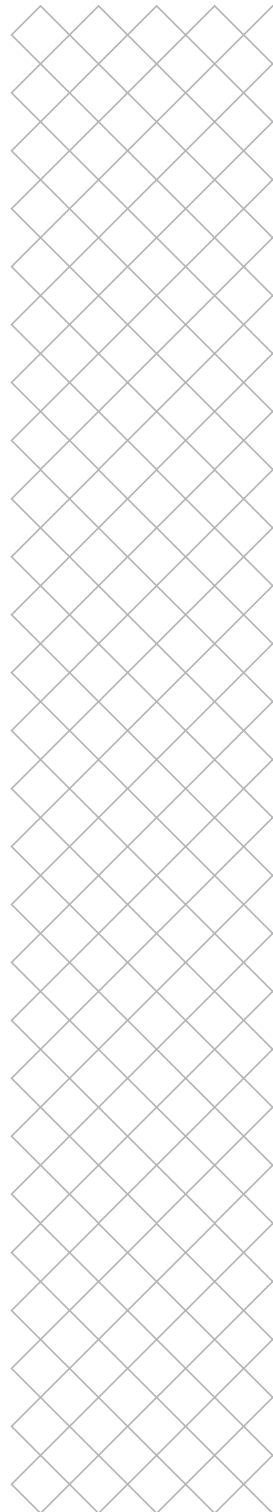
Motor cable with length 340 mm, used for the feeder motor



## 216073 Stepper motor cable L160

Stepper motor cable L160

Motor cable with length 490 mm, used for the Z motor



# Cables



## 216066 Limit switch X L530

Limit switch X L530

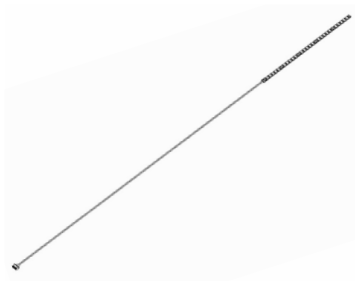
Limit switch for the X direction with 530 mm white cable and blue shrink sleeve



## 216068 Limit switch Y L710

Limit switch Y L710

Limit switch for the Y direction with 710 mm white cable and red shrink sleeve



## 216070 LED strip L250

White LED strip L250 with cable L725

White single LED strip 250 mm wide with 725 mm cable



## 216160 Air Manager sensor cable L645

Sensor cable L645

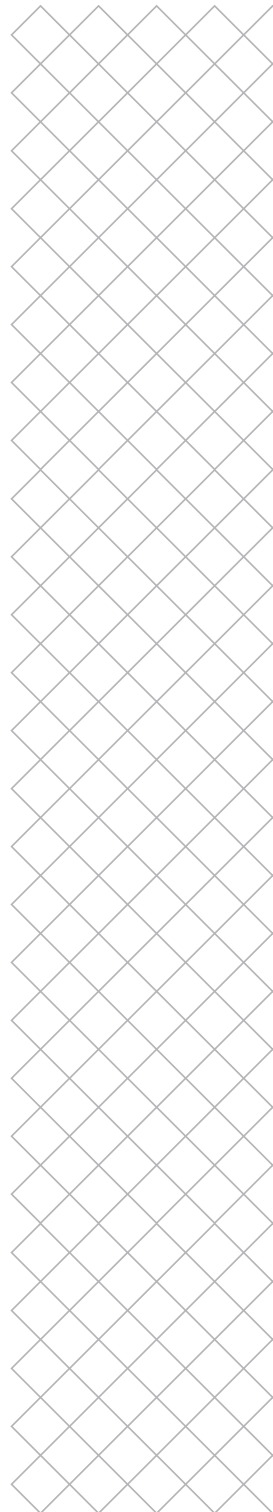
Cable to connect the Air Manager sensor PCB (214682) to the mainboard (224502)



## 216195 Heated bed cable L930

Heated bed cable L930

Bundled cable of the heated bed temperature sensor and heater wires in a white braided sleeve



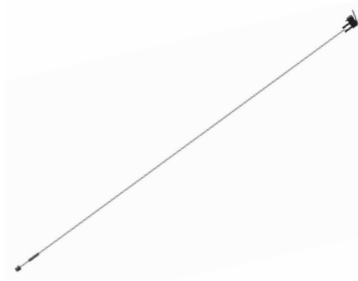
# Cables



## 216508 Ribbon cable L160

Ribbon cable 10pin L160

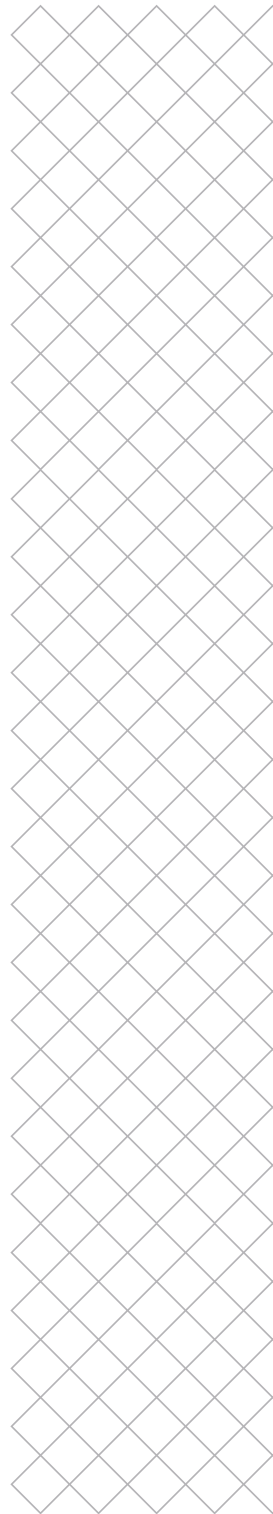
Single 10 pin ribbon cable 160 mm long between the connectivity board (221542) and mainboard (224502)



## 217285 Limit switch Z L200

Limit switch Z L200

Limit switch for the Z direction with 200 mm white cable and black shrink sleeve



# Nuts & bolts



## 1200 M3x8 bolt

ISO 7380 M3X8

Hexagon socket (2 mm) button head bolt M3x8



## 1202 M3x10 bolt

ISO 7380 M3x10

Hexagon socket (2 mm) button head bolt M3x10



## 1203 M3x12 bolt

ISO 7380 M3x12

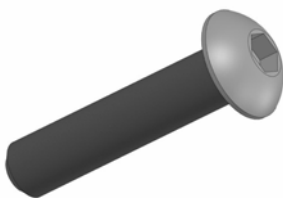
Hexagon socket (2 mm) button head bolt M3x12



## 1204 M3x16 bolt

ISO 7380 M3x16

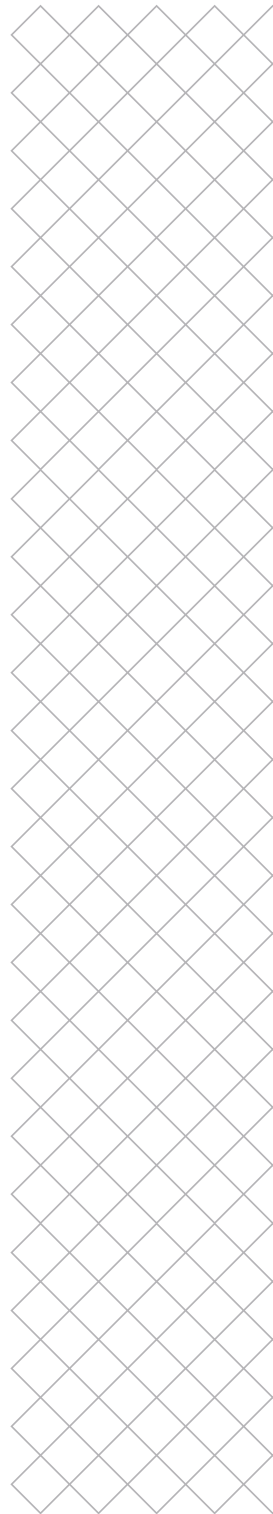
Hexagon socket (2 mm) button head bolt M3x16



## 1205 M3x14 bolt

ISO 7380 M3x14

Hexagon socket (2 mm) button head bolt M3x14





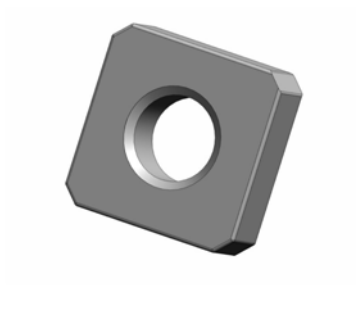
# Nuts & bolts



## 1206 M3x20 bolt

ISO 7380 M3x20

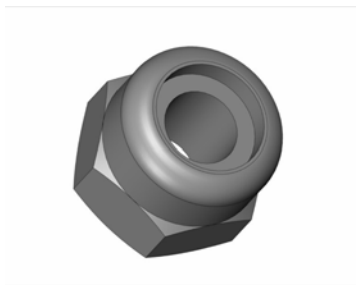
Hexagon socket (2 mm) button head bolt M3x20



## 1213 Square nut M3

DIN 562 Square Nut M3 A2

Square M3 nut used in the Ultimaker 2+ Connect frame



## 1214 Lock nut M3

Prevailing torque nut M3 ISO 7040

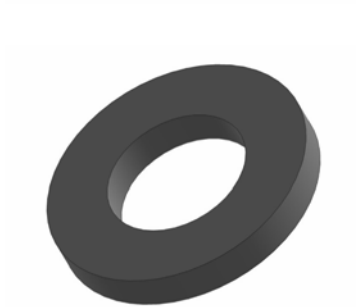
Hexagon M3 lock nut with plastic insert used on e.g. the heated build plate



## 1217 M4x10 bolt

ISO 7380 M4x10

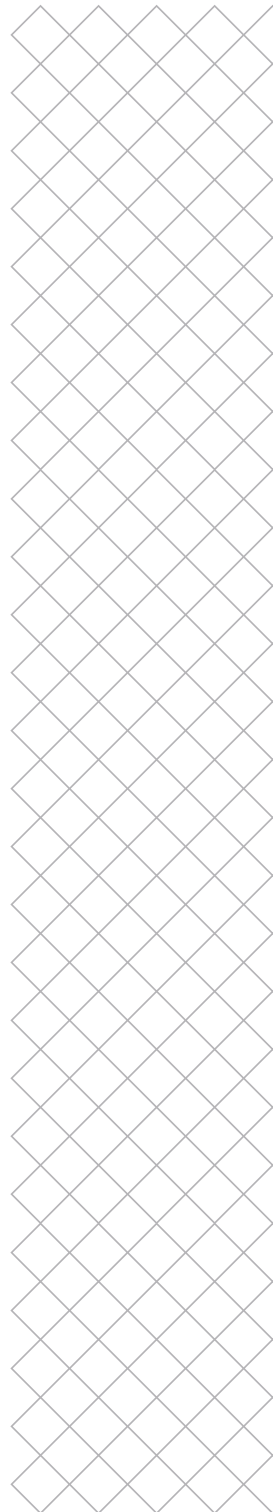
Hexagon socket (2.5 mm) button head bolt M4x10, used on the square flanged bearings (1170)



## 1288 Washer M6

Washer M6

Stainless steel M6 washer used on the Ultimaker 2+ Connect Z stage around the thumb wheels (1776)



# Nuts & bolts



## 1292 M3x6 bolt

DIN 7380 M3x6

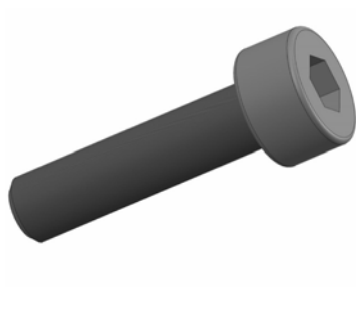
Hexagon socket (2 mm) button head bolt M3x6



## 1348 M3x4 bolt

ISO 7380 M3x4 A2

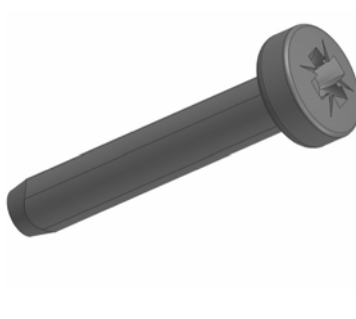
Hexagon socket (2 mm) button head bolt M3x4



## 1351 M2.5x10 bolt

ISO 4762 M2.5x10

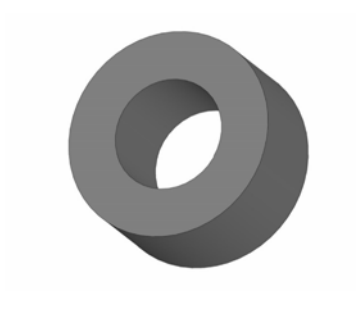
Hexagon socket (2 mm) cylinder head bolt M2.5x10



## 1362 M2.5x14 screw (PZ1)

Tap Fix 2.5x14 mm staal verzinkt bolkop porzidrive

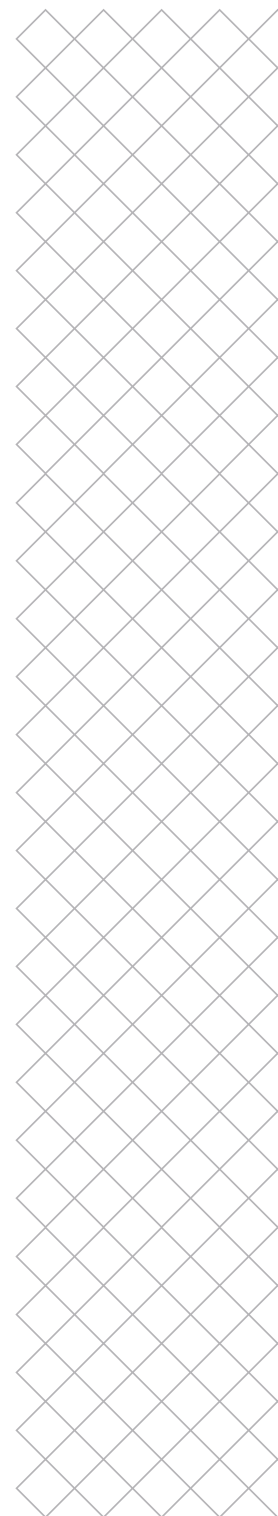
Thread forming screw for plastic with PZ1 head, used on the side fans (1313)



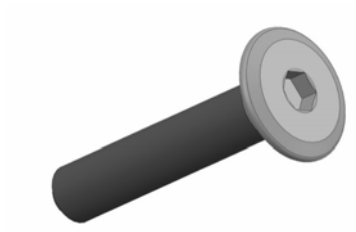
## 1545 Spacer 3.2x6x3

Spacer 3.2x6x3

Plastic spacer 3 mm thick, used behind the Z limit switch (217285)



# Nuts & bolts



## 201205 M3x16 flathead bolt

Flat head M3X16

Custom hexagon socket (2 mm) flat head bolt M3x16



## 201321 M3x10 flathead bolt

Flat Head M3X10

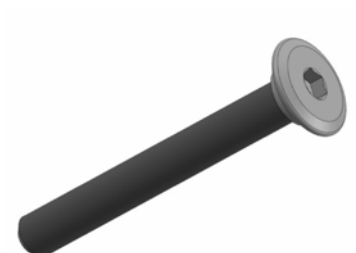
Custom hexagon socket (2 mm) flat head bolt M3x10



## 201390 M3x12 flathead bolt

Flat head M3X12

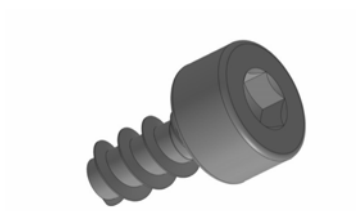
Custom hexagon socket (2 mm) flat head bolt M3x12



## 212958 M3x24.2 flathead bolt

Flat head M3X24,2

Custom hexagon socket (2 mm) flat head bolt M3x24.2



## 215150 Thread-forming screw M2.5x5

Hex socket head plastic screw 2,5 x 5

Thread forming M2.5x5 screw for plastic with hexagon socket (2 mm) cylinder head

