

EXIE

experts in healthy houses

CaNaDry® Floor

The Exie CaNaDry® is a mixture of hemp shives, lime, Exie additive and water. The hemp shives are individually coated with lime and additive. CaNaDry® is “grainy” in the form of shives.

The product combines ecology, attention to health, sustainability, affordability, comfort, efficiency and ease of use. Hempcrete normally has a very long drying time but with CaNaDry®, there is no drying time. We mix the hemp, lime, patented additive and water in advance so that you can immediately start

insulating your floor structure. The specific composition of the mix ensures an accelerated hardening of the floor so that you quickly can continue work.

Exie CaNaDry® can be installed from a thickness of 4cm. Placing underfloor heating above the CaNaDry® is perfectly possible.



Sound insulation

CaNaDry® provides very good sound insulation because the vibrations and sound waves are absorbed.

Moisture regulation

CaNaDry® as a moisture regulator. At a high indoor humidity level, the hemp lime absorbs the excess moisture and releases it again as soon as the moisture content is low. No condensation problems are possible and a comfortable indoor climate is guaranteed.

Co2 negative

CaNaDry® excels in the absorption of CO². The plants absorb far more CO² than the emissions produced during cultivation and the production process. Moreover, CaNaDry® remains absorbent CO² after its processing and installation thanks to the continuous carbonation process.

Safety

When dealing with CaNaDry we advise to use mouth masks due to possible dust.

Instructions

CaNaDry will be delivered in bigbags (201kg \pm 2,5%) or 75l bags (15kg). Bags will be opened and poured out. Up to a thickness of 8cm, this can be done in once. Once the CaNaDry is spread out, Exie Carbonator must be added to fasten the hardening proces. Exie Carbonator is a natural product and so no extra safety precautions are needed. Adding the carbonator can simply be done with a watering can. 6l per kubiek meter must be added diluted with 6l of water. Once done, a small pressure must be applied the compact the layer. We advise you to use a garden roll (see picture below). There is no need to put tremendous amount of pressure on the hemp.

When the insulation layer exceeds 8cm, this proces must be done twice. So for example a layer of 15cm: spread out the CaNaDry to a thickness of 8cm, add the carbonator diluted with water, pour the remaining 7cm and add the carbonator diluted with water again. In order to make the surface level the use of a rake comes in handy. There is no need to make it 100% level since the screed will make sure of that. Screed can be placed one hour after placing the CaNaDry. Adding underfloor heating is perfectly possible with CaNaDry. A reinforced mesh must be places on the surface of the CaNaDry in order the fix the heating system.

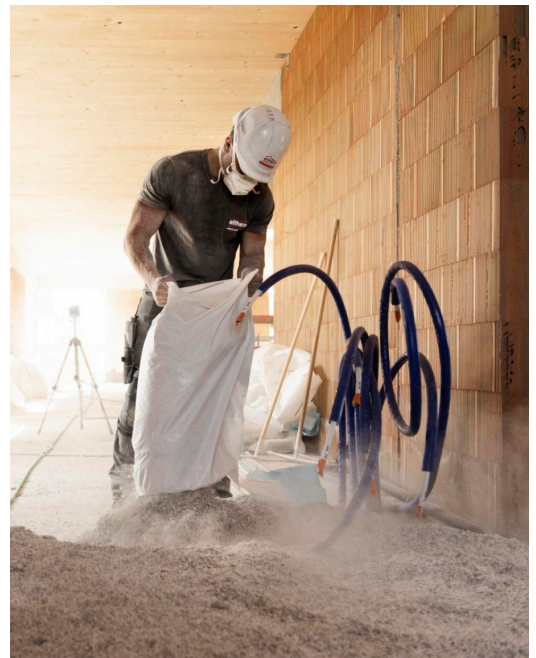
Note: Don't expect the CaNaDry to be rock solid hard, this takes times.

Underground

When starting on a concrete floor with a basement below, installation must be done as described above. With the absent of a basement, a thin layer (3-4)cm of shells must be placed on the concrete in order to prevent permanent capillary rise.



A floor build up on bare soil is also possible with CaNaDry. Place 25-30cm of shells directly on the soil and place the CaNaDry directly on the shells following the instructions above.



For intermediate floors or floors with a basement below, the CaNaDry can be placed directly on present surface.

Circularity

CaNaDry can be recycled when uncontaminated. In order to be 100% circular and prevent contamination of the CaNaDry with other products, we advise to place a foil between the screed and CaNaDry to prevent from forming one solid block.

Note: the foil is only needed in terms of circularity.



Finishes

- screed, both cement bound and lime bound
- Double staggered floorboards
- Dry screed, lithotherm
- Other finishes will need to be discussed with Exie

