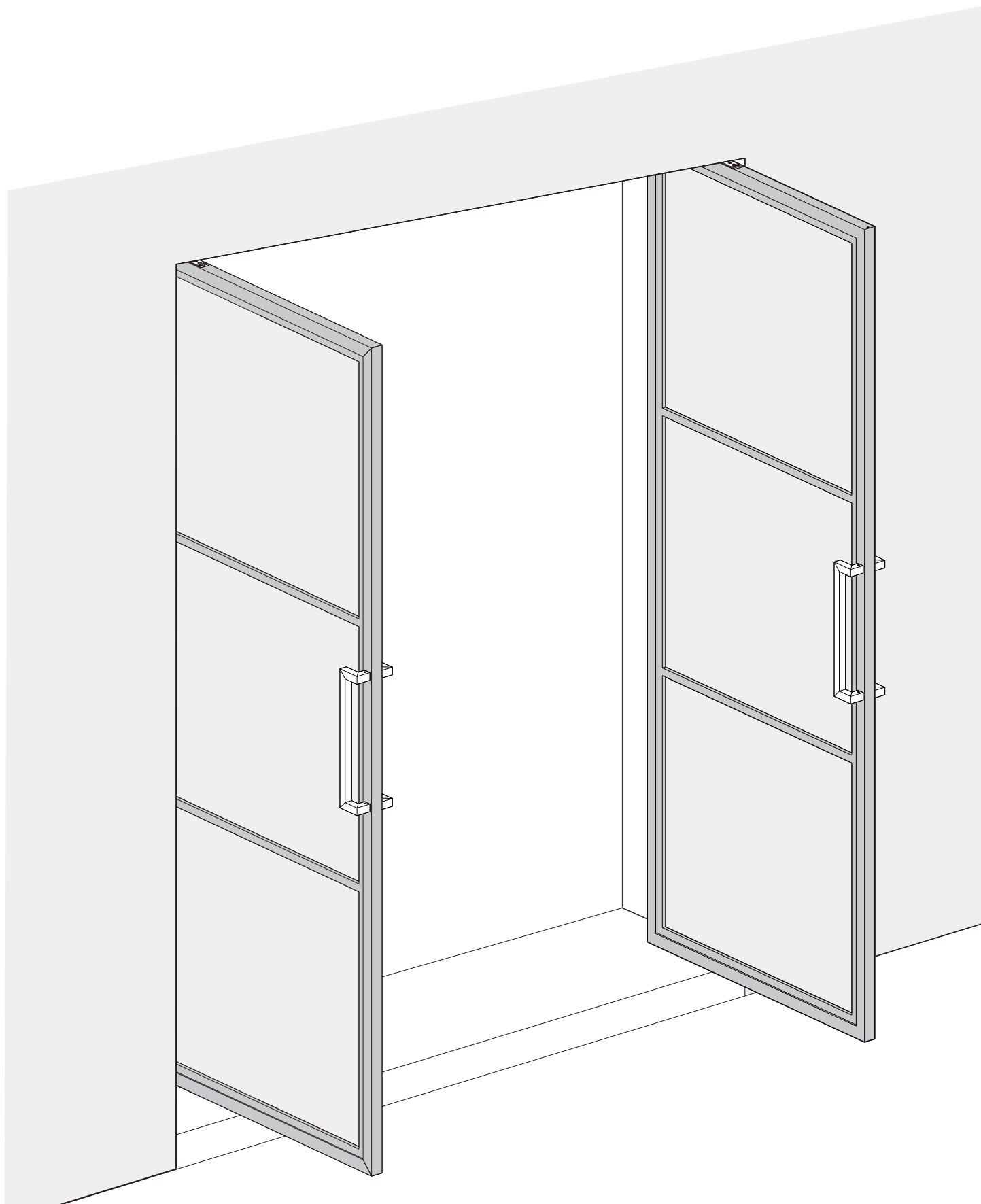
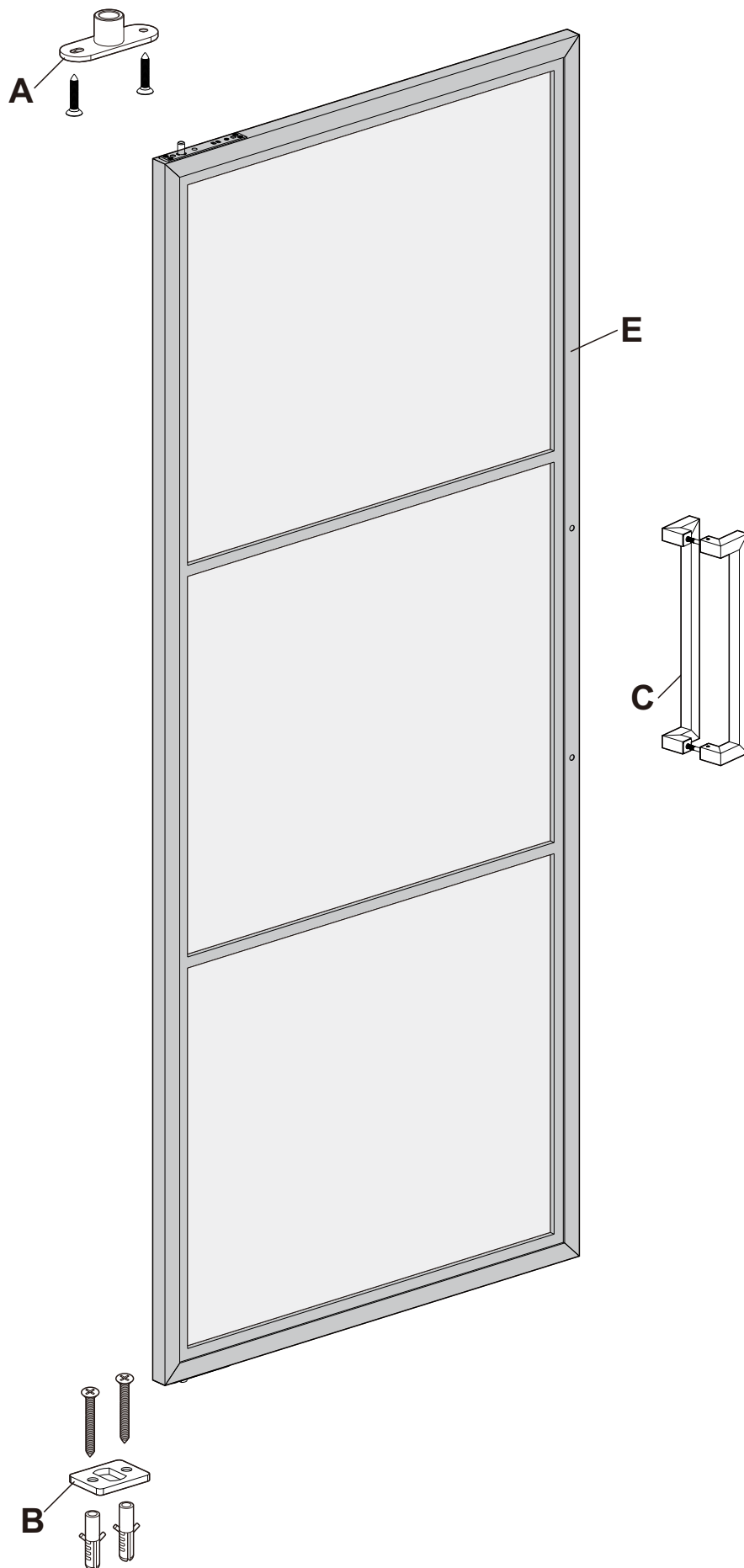


# Installation Manual

---

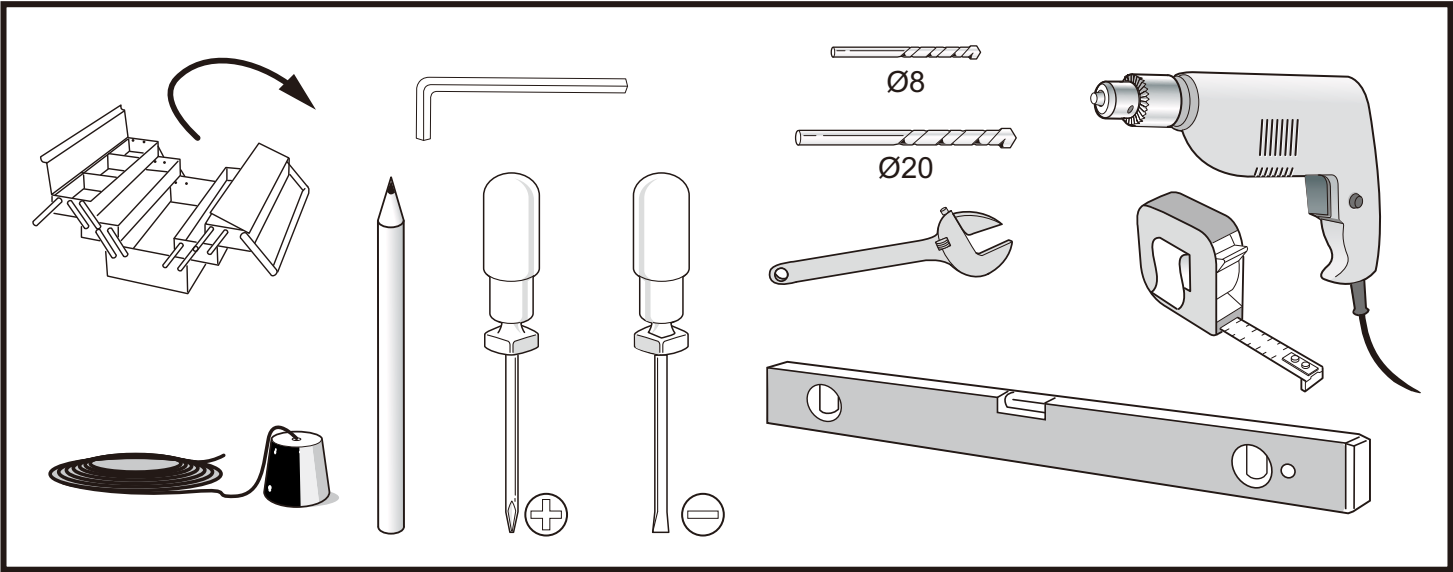


# Components list

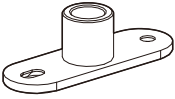
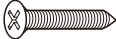


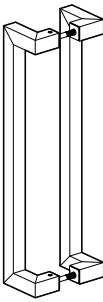
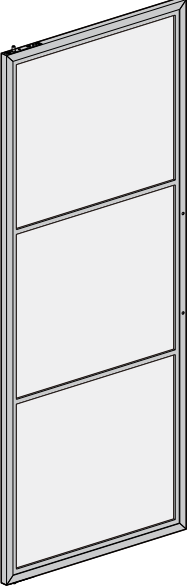
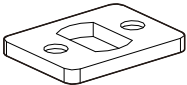



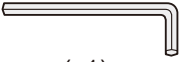


# Pre -installation

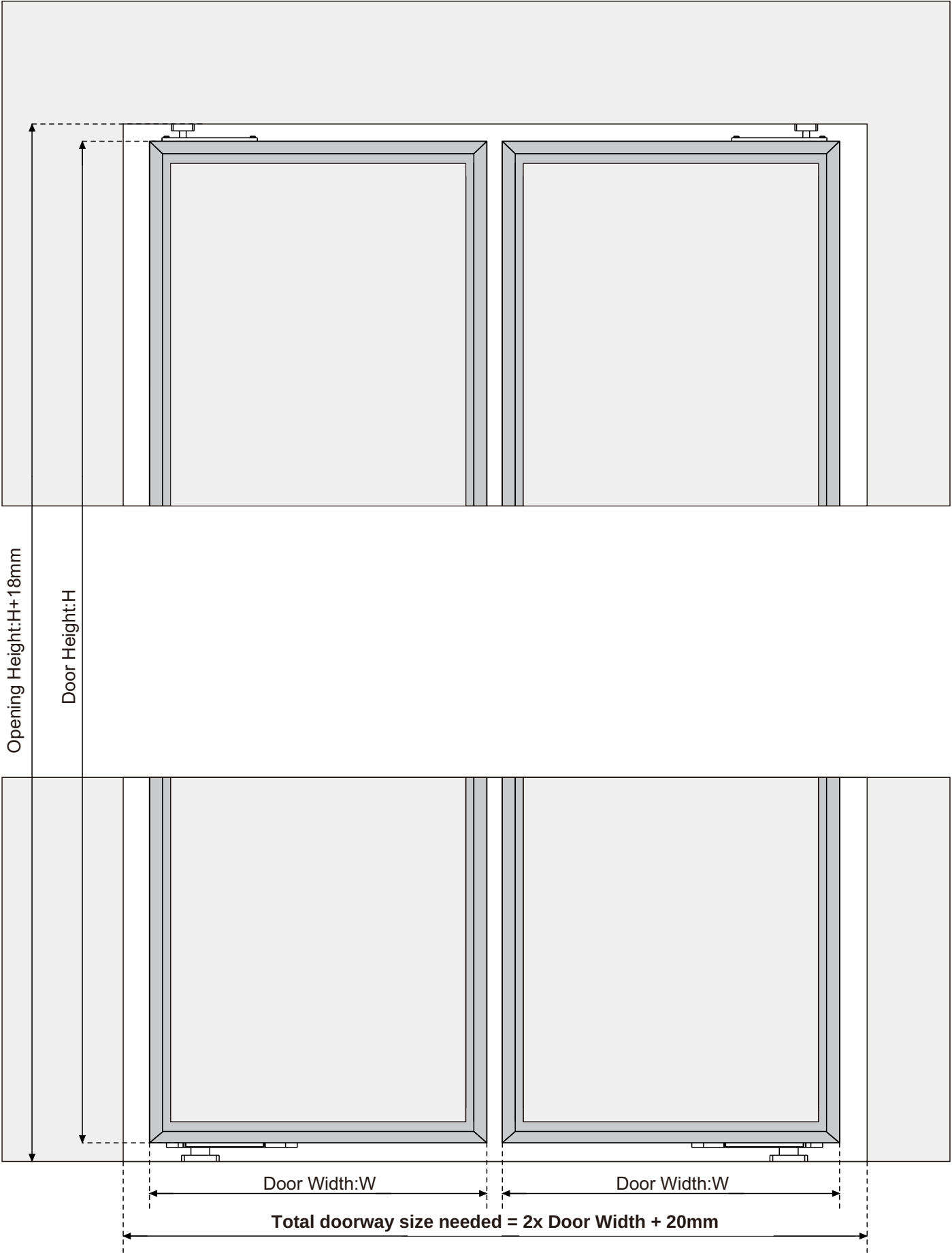
## TOOLS REQUIRED



## HARDWARE INCLUDED

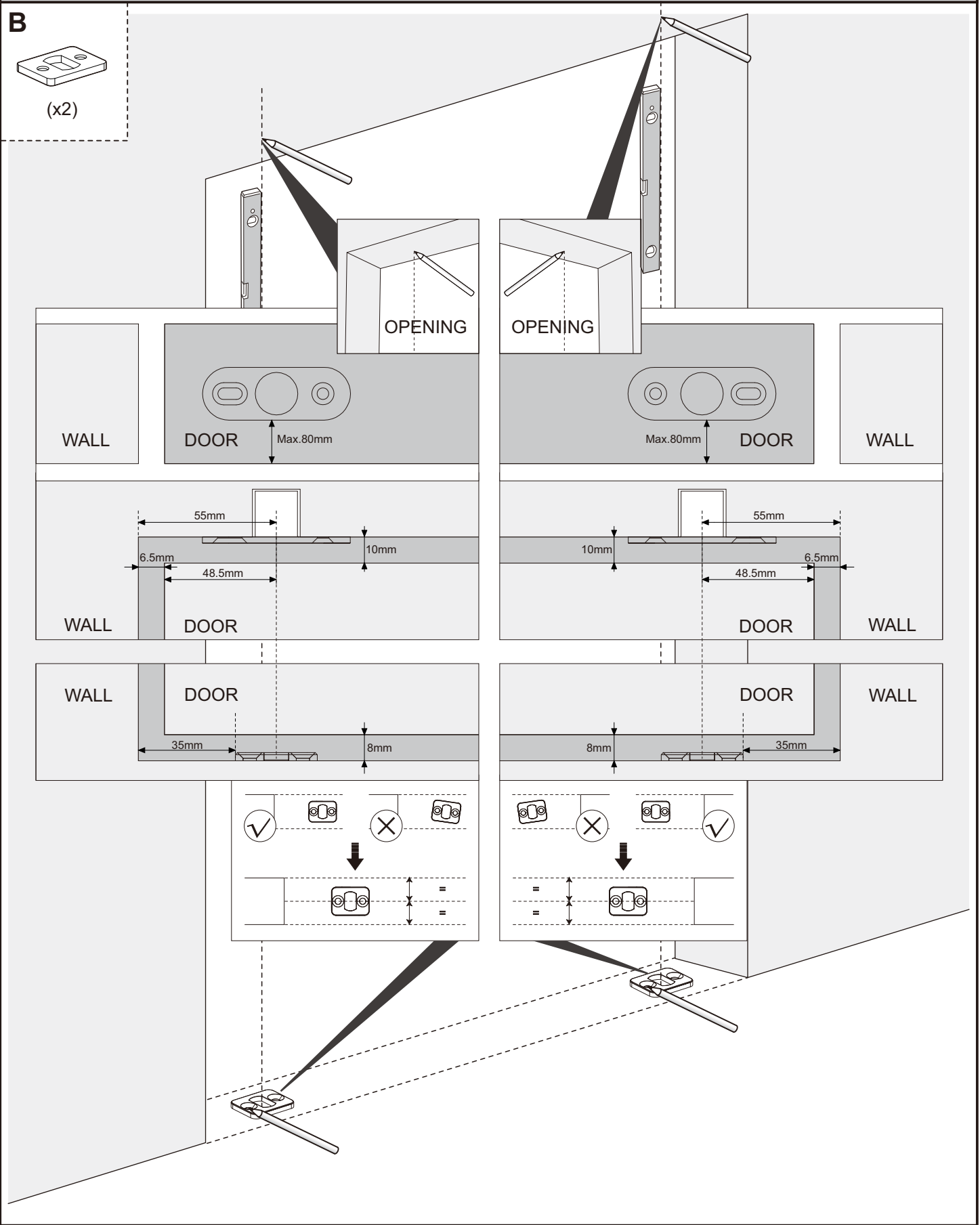
<b>A</b>  (x2)	<b>Wooden Wall</b>  ST4.8x25(x4) <hr/> <b>Cement Wall</b>  ST4.8x38(x4)  Ø8 (x4)	<b>C</b>  (x2)	<b>E</b>  (x2)
<b>B</b>  (x2)	 ST4.8x38(x4)  Ø8 (x4)	<b>D</b>  (x2)  (x1)	

# Door preparation

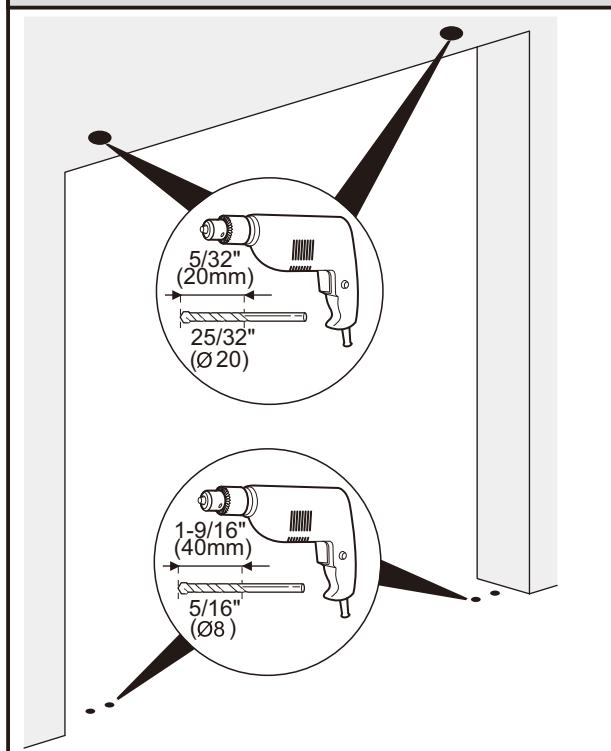


# Installation

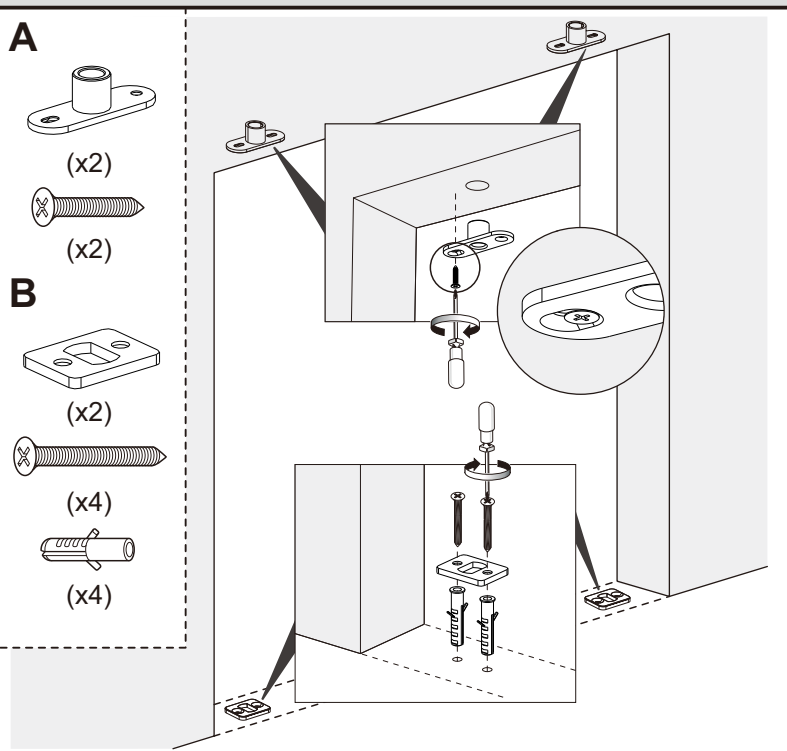
**1** Mark the hole position by pencil.(Door Width 1090mm)



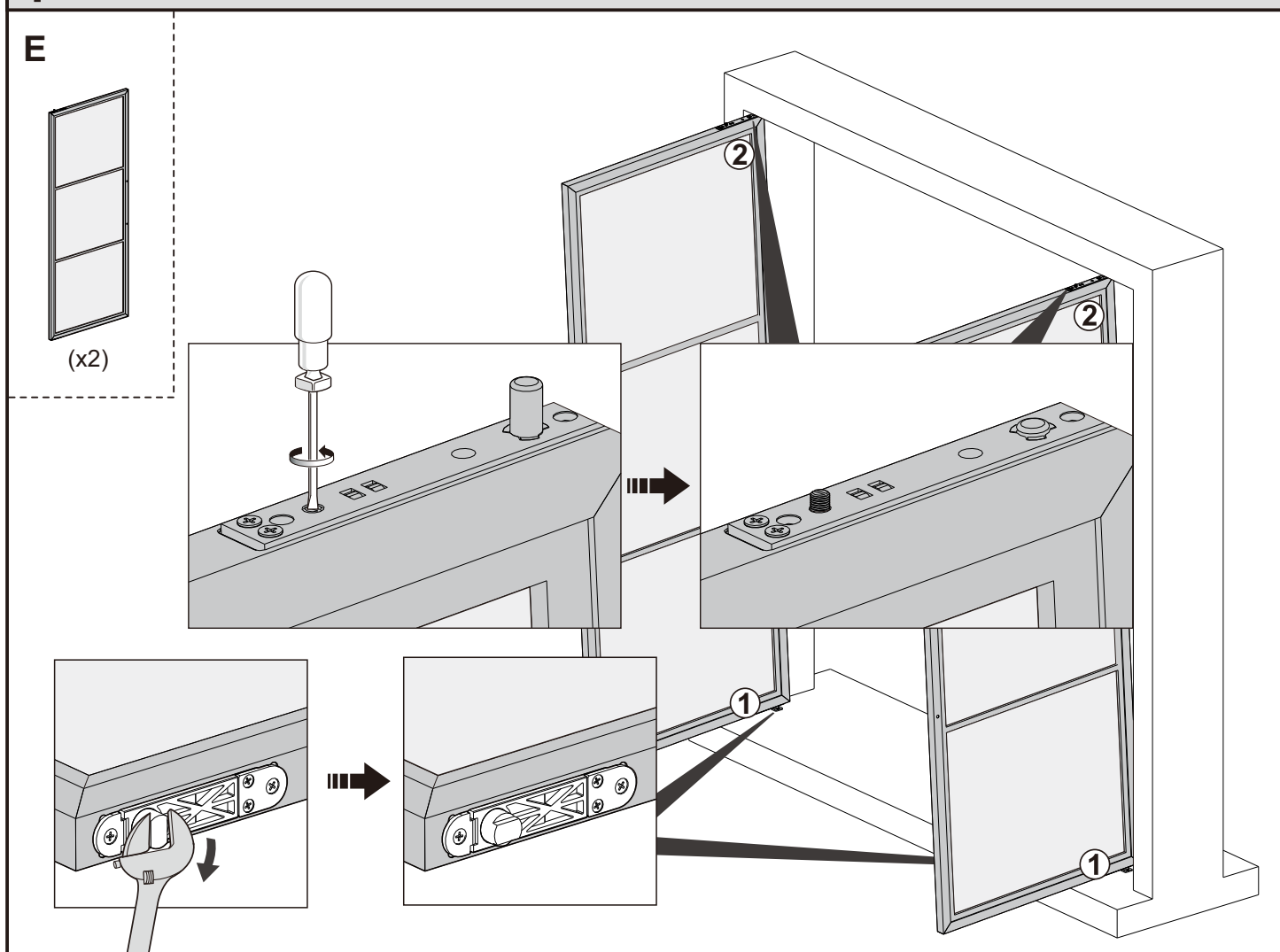
## 2 Drill holes.



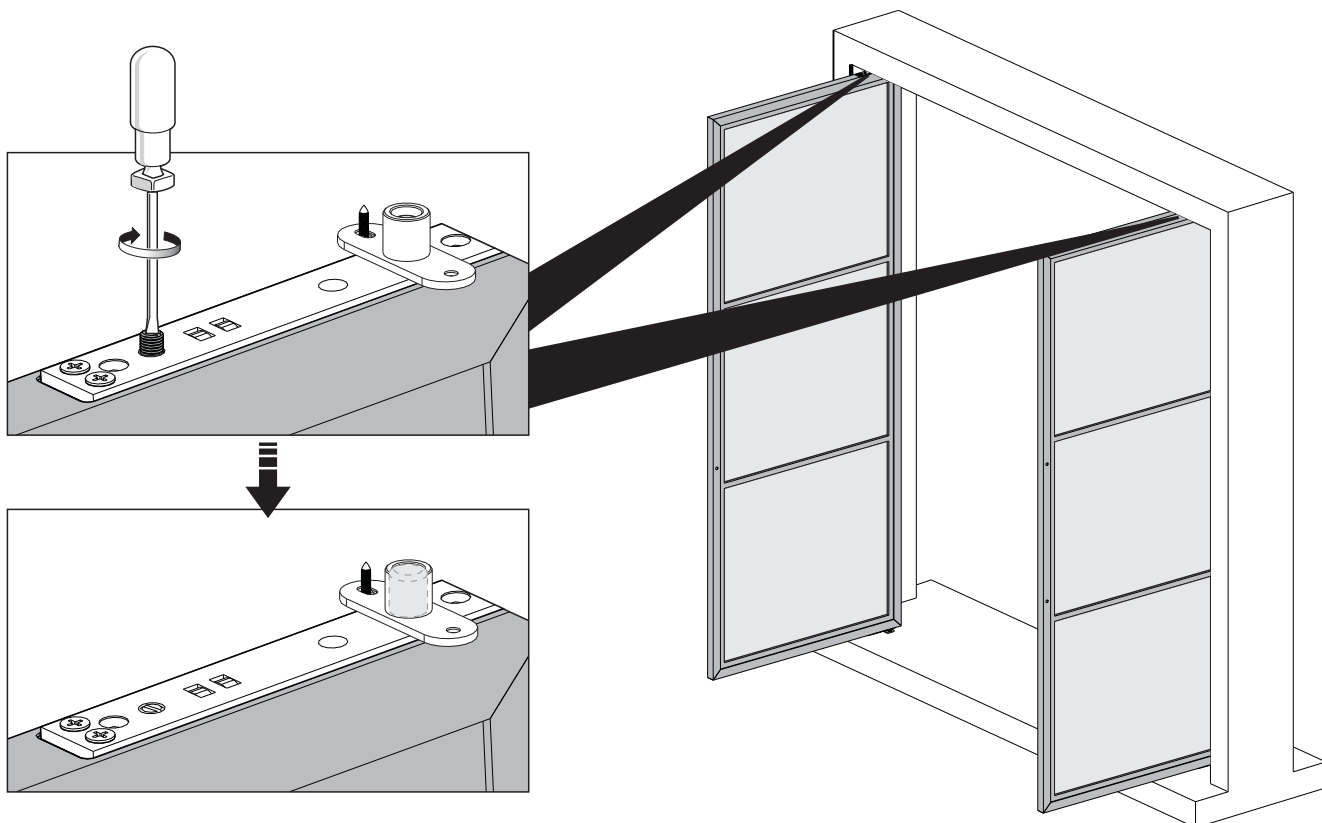
## 3 Fixing top pivot and bottom plate accordingly.



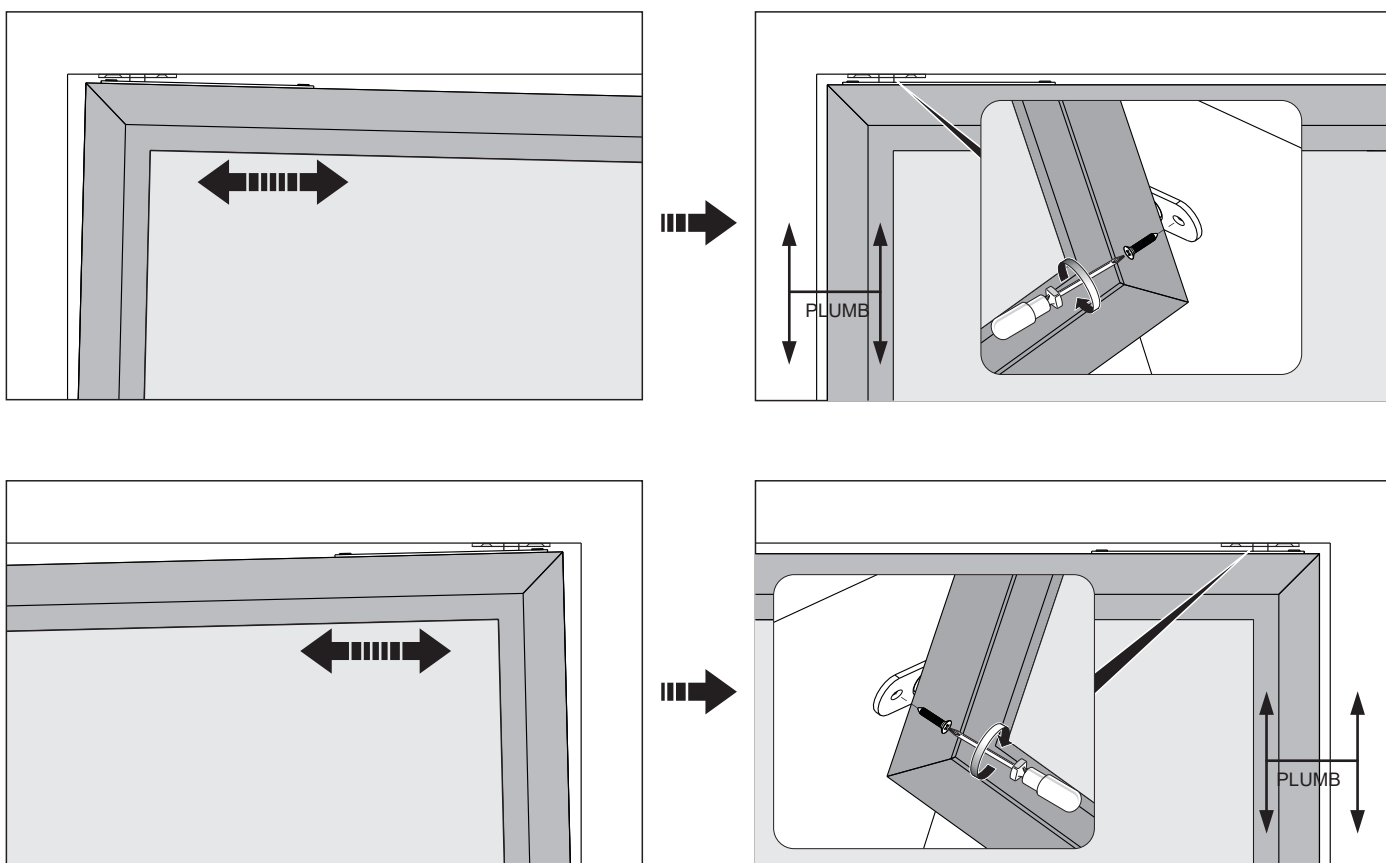
## 4 Loosen the screws to make pin retract.



**5** Fasten the screws to make pin pot out inside the top pivot.



**6** Loosen the screw in the slotted hole to ensure door is parallel with wall and fasten both screws.



## 7 Remove the hinge and adjust the opening and closing door force if necessary.

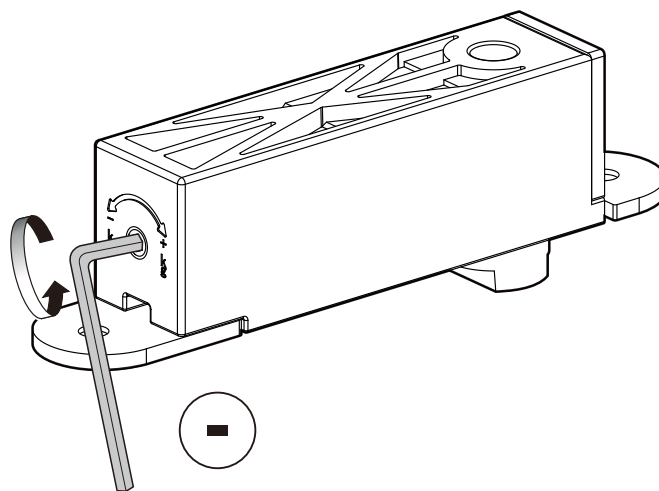
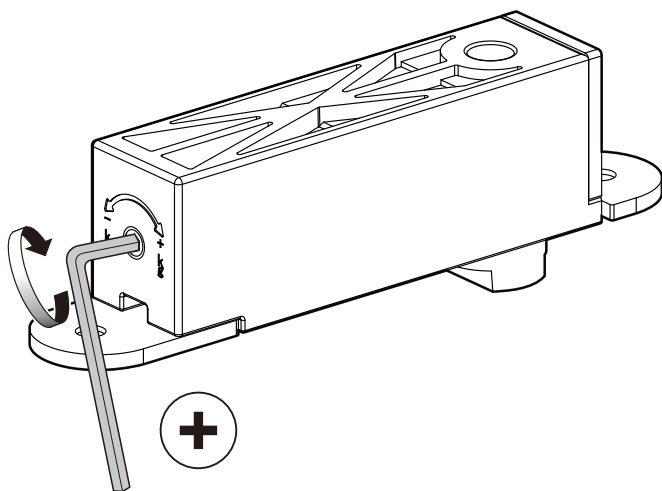
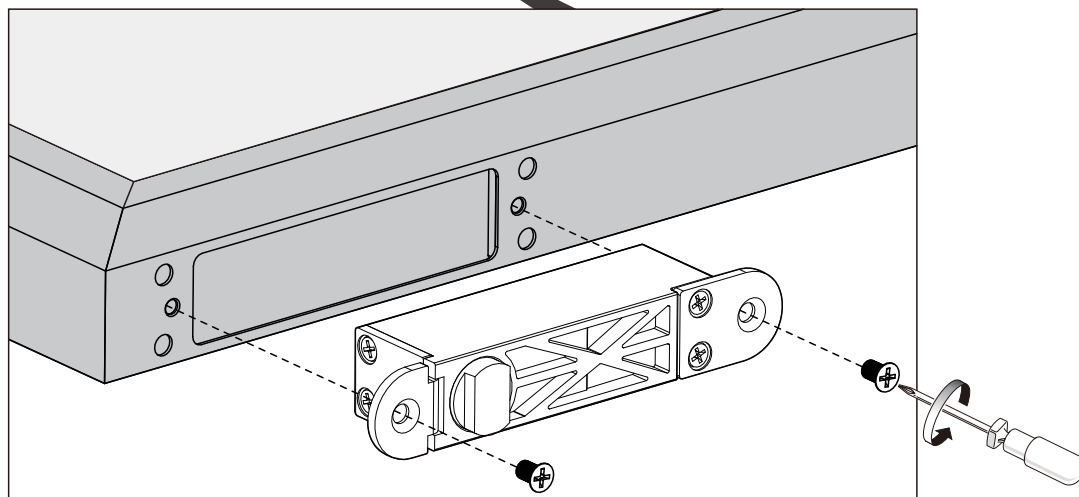
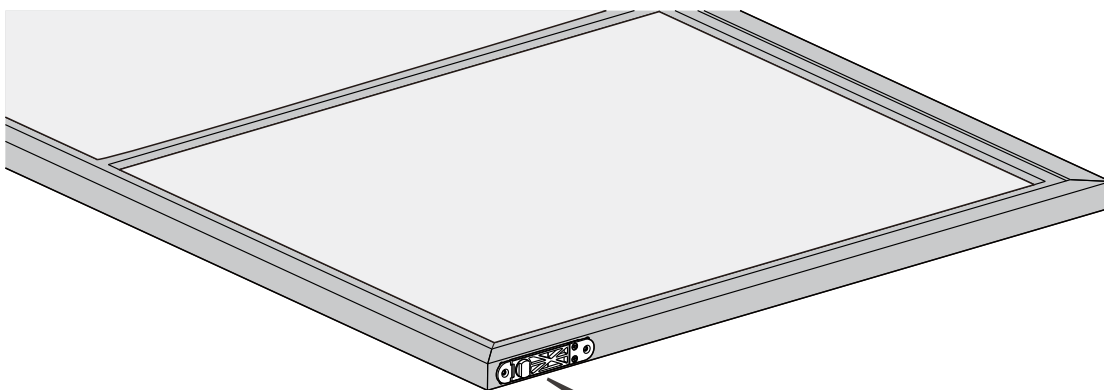
D



(x1)



(x2)

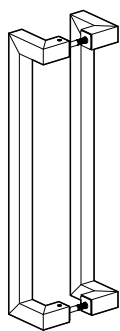


**NOTE:** If it is too tight to open/close the door, you can change a smaller set screw (included) for comfortable force.



## 8 Mount a handle

C



(x2)

