



ABC Hydraulisch Ventielenblok

Belangrijke tips voor de installatie!

Volg nauwgezet de juiste stappen bij het installeren van het product, anders richt u onherstelbare schade aan de onderdelen aan! Na montage geen retourname mogelijk.

Gebruik voor een volledige beschrijving van de installatieproces de documentatie van Mercedes Benz. Controleer of u het juiste onderdeel heeft ontvangen, inspecteer het onderdeel optisch. Teruggave onder het herroepingsrecht is mogelijk als het onderdeel niet gemonteerd of gebruikt is. Zie de voorwaarden van de koop.

Het lezen van dit document impliceert dat u akkoord gaat met onze voorwaarden. Werkzaamheden aan het voertuig dienen alleen door gecertificeerd personeel gedaan te worden anders kan er schade aan het voertuig en de onderdelen ontstaan. Het ABC systeem opereert met een druk van meer dan 200 bar, verkeerde stappen tijdens het installatieproces kunnen serieuze consequenties hebben. Het is uw verantwoordelijkheid de officiële service manual te bestuderen en de juiste veiligheidsmaatregelen te nemen voordat er aan het systeem en het voertuig gewerkt wordt omdat anders letselschade en mogelijk dood kunnen plaatsvinden. Mercedes Benz software is noodzakelijk om het systeem te ontluchten en te kalibreren na installatie.

- Controleer de werking van alle andere onderdelen van het ABC systeem (regelventielen, regelklep, drukbegrenzingsventiel, druksensor, pulsatiedemper, accumulatoren, abc-regelcomputer, veerpoten, ABC-pomp).
- Wij adviseren het plaatsen van een nieuwe pulsatiedemper bij de installatie van een ABC veerpoot.
- Ververs of spoel alle ABC olie in het ABC systeem (verversen 4 liter, ABC flush 12 liter).
- Maak de accupolen los, en haal de druk van het systeem voor het werken aan het voertuig.
- Installeer het ventiel in onbeladen toestand waarbij met grootste zorg in een schone omgeving gewerkt wordt. Stof, vuil en deeltjes op gereedschap, leidingen, etc. kunnen in het ABC systeem terecht komen. Iedere vorm van vervuiling in het systeem zorgt voor onzuivere olie waardoor interne lekkages kunnen ontstaan.
- Volg de installatie instructies van Mercedes Benz. Gebruik de juiste aandraaimomenten volgens de specificaties.
- Wees voorzichtig met de stekkeraansluitingen en controleer of het elektrisch contact goed is.
- Na installatie het systeem mogelijk meermaals ontluchten, totdat alle lucht weg is. Ontlucht de leidingen en gebruik de ontluichtingsnippels. De kleinste luchtbel zorgt al voor problemen in het ABC systeem. Volg de ontluichtingsprocedure met SDS.
- Volg de aanwijzingen in de Mercedes Diagnoseapparatuur voor het kalibreren van het ABC systeem.
- ABC rodeo test is niet noodzakelijk na vervanging van het ventiel en zet het systeem onnodig onder druk.
- Doorzakken van de auto van max. 20-30 mm tijdens parkeren is zelfs bij nieuwe ventielen mogelijk.

Let op;

- Het ventiel voor de voorzijde en achterzijde zijn gelijk.
- Het ventiel wordt normaal geleverd zonder de accumulator, houder en korte leiding. De houder, leiding en accumulator zijn met 10mm en 17mm bouten bevestigd en kunnen eenvoudig overgezet worden van het oude ventiel. We verkopen deze onderdelen ook los in onze webshop. We adviseren altijd om een nieuwe accumulator te plaatsen.

Neem contact op indien u vragen heeft.

www.abcspecialist.nl

info@abcspecialist.nl

Deze informatie is met de grootst mogelijke zorgvuldigheid samengesteld en gerealiseerd. Toch bestaat altijd de mogelijkheid dat bepaalde informatie na verloop van tijd verouderd, niet meer juist is, of dat er fouten zijn ontstaan bij de vertaling, hierdoor kunnen wij geen garanties geven met betrekking tot de inhoud. Er kunnen geen rechten ontleed worden aan de hier gegeven informatie en adviezen en ABCspecialist houdt zich niet aansprakelijk voor de gevolgen van activiteiten die worden genomen op basis hiervan. Niets van dit document mag worden verveelvoudigd of openbaar gemaakt zonder de voorafgaande toestemming van ABCspecialist.



ABC Hydraulik Ventilblock

Wichtige Information für die Installation!

Bitte befolgen Sie die richtigen Schritte für die Installation, sonst können Sie irreparable Schäden an das Produkt machen!

Wenn die richtigen Schritten nicht getroffen werden, kann das Produkt nicht zurück gegeben werden!

- Lesen Sie bitte die vollständige Installationsinformation von Mercedes Benz.
- Überprüfen Sie bitte ob Sie das richtige Teil erhalten haben und prüfen Sie das Teil optisch. Die Rückerstattung des Widerrufsrechts ist möglich, wenn das Teil nicht montiert oder benutzt wird. Siehe die Verkaufsbedingungen.

Durch das Lesen dieses Dokuments erklären Sie sich mit unseren Bedingungen einverstanden. Die Arbeit sollte nur von einem spezialisierte Mechaniker ausgeführt werden, da sonst Schäden am Fahrzeug verursacht werden können. Das ABC-System arbeitet mit einem Druck von über 200 bar. Falsche Installationsschritte können schwerwiegende Folgen haben. Sie sind selbst verantwortlich das offizielle Servicehandbuch und die erforderlichen Sicherheitsvorkehrungen zu lesen, die vor der Arbeit zu ergreifen sind, oder das Fahrzeug anzuheben, da bei ernsthaften Verletzungen schwere Verletzungen und Tod die Folge sein können. Die Software von Mercedes-Benz ist erforderlich, um das System nach der Installation zu entlüften und kalibrieren.

- Überprüfen Sie bitte den Betrieb alle anderen ABC Teilen (Pulsationsdampfer, Akkumulator, Sperr Ventilen, Saugdrosselventil, Begrenzungsventil, Drucksensor, Federbeinen, Pumpe, ABC Steuergerät) von das ABC System.
- Wir empfehlen Ihnen zusammen mit das Ventil immer ein neue Druckspeicher zu installieren.
- Erfrischen Sie alle ABC Öl (ABC-Öl Wechsel mit 4 Liter oder ABC-Öl Flush mit 12 Liter).
- Trennen Sie die Batterie und nehmen Sie die Druck von das System ab, bevor Sie am das Fahrzeug arbeiten. Installieren Sie die ABC Fahrwerk Teilen in unbelasteter Position und arbeiten Sie in einer sauberen Umgebung nach Mercedes Benz Installationsinformation.
- Entlüften Sie das System, möglich mehrmals, bis alle Luft aus das System ist. Entlüften Sie bitte zuerst die Leitungen, danach die Entlüftungs-Ventilen geöffnet können werden. Eine kleine Luftblase verursacht bereits druck Problemen und Geräusche im das System.
- Folgen Sie den Anweisungen für Entlüftung und Kalibrierung mit Mercedes WIS C3/C4 Star Diagnosegeräte.
- Nach dem Austausch der Ventil ist kein ABC-Rodeo-Test erforderlich, es lädt die Systemdruck unnötig hoch.

Das Ventil hinten und vorne sind gleich. Ein Ventil wird verkauft ohne die Druckspeicher und Halter. Die schwarze Druckspeicher und Halter ist mit 10mm Bolzen und 17mm Bolzen befestigt, und kann einfach von Ihre aktuellen Ventil übertragen werden. Wir verkaufen die Druckspeicher und Halter auch separat im unsere Webshop. Wir empfehlen immer einen neue Druckspeicher zu installieren.

Diese Informationen wurden mit größter Sorgfalt zusammengestellt und realisiert. Es besteht jedoch immer die Möglichkeit, dass bestimmte Informationen nicht mehr aktuell sind, nicht mehr korrekt sind oder dass während der Übersetzung Fehler aufgetreten sind, so dass wir keine Garantie für den Inhalt geben können. Aus den hier gegebenen Informationen und Hinweisen können keine Rechte abgeleitet werden und ABCspecialist haftet nicht für die Folgen von Aktivitäten, die auf dieser Grundlage vorgenommen werden. Kein Teil dieses Dokuments darf ohne vorherige Genehmigung von ABCspecialist reproduziert oder veröffentlicht werden.



ABC Hydraulic valve

Important installation procedure!

Please strictly follow the correct steps when installing the product, otherwise you will irreparably damage the parts! After installation, no returns are accepted!

Please refer for installation to the complete installation description from Mercedes Benz.

Please check if you received the correct item, and inspect the item carefully. Returning a product is possible using the right of withdrawal if the item is un-used, not installed and undamaged. Please check the conditions that apply to the sale and returns.

Reading this document signifies your agreement to our terms and conditions. Work should only be performed by a trained mechanic else damage might be caused to the vehicle. The ABC system is working under a pressure of over 200 bar, taking the wrong installation steps can have serious consequences. You are responsible for studying the official service manual and the necessary safety proceedings that should be taken before working on, and raising the vehicle as when errors are made serious injuries and death can occur. Mercedes Benz software is required to pressurize, bleed and calibrate the system after installation.

- Check the functioning of all other components of the ABC system (control valves, pressure limiting valve, pressure sensor, pulsation damper, accumulators, ABC control computer, shocks, suction valve).
- Check the function of the accumulators by gently pressing inside against the membrane with a small flat object like a small Allen key. The membrane is weak or defect, or gas has escaped the accumulator, when you are able to push it more than a few mm inwards.
- We recommend strongly to install a new accumulator when installing another ABC valve.
- Refresh all ABC oil in the ABC system (ABC oil change 4 liter oil, or ABC flush 12 liter oil)
- Disconnect the battery, and bleed the system before working on the car.
- Install the valve with the utmost attention to a very clean environment, dirt and particles on tools, lines, etc. can easily get into the ABC system. Any debris that enters the system contaminates the hydraulic fluid causing internal leakage.
- Follow the installation procedure from Mercedes Benz. Tighten all bolts to the specifications.
- After installation bleed the system, possibly several times, until all the air is out of the system. The smallest air bubble already causes problems in the ABC system.
- Please use SDS and follow the instructions in the Mercedes Benz Diagnostic Equipment to calibrate and bleed the ABC system.
- The ABC rodeo test is not necessary after replacing the valve and will stress the system unnecessary.

Please note;

- The front and rear valve blocks are similar units.
- The valve comes without accumulator, bracket and small line. The parts are mounted with 10mm and 17mm bolts and can be transferred from the old valve easily.
- We strongly advice to install a new accumulator.

Please contact us if you have questions

www.abcspecialist.nl

info@abcspecialist.nl

This information has been written with the utmost care, nevertheless there is always the possibility that certain information will become obsolete over time, is no longer correct, or that errors have occurred during the translation, such that we cannot give any guarantees with regard to the content. No rights or liability can be dissected from this information and advices. ABCspecialist is not liable for the consequences of activities that are taken on this basis. Nothing from this information will be reproduced or published without the prior written permission of ABCspecialist.

ABC Hydraulic Valve block Y36/1 Y36/2

Part numbers: A2203200358, A2203201258, A2203280031

Location: 1 valve block with large accumulator near the front left wheel regulating the pressure to the front left and front right shock.

1 valve block with small accumulator between the rear wheels regulating the pressure to the rear left and rear right shock.

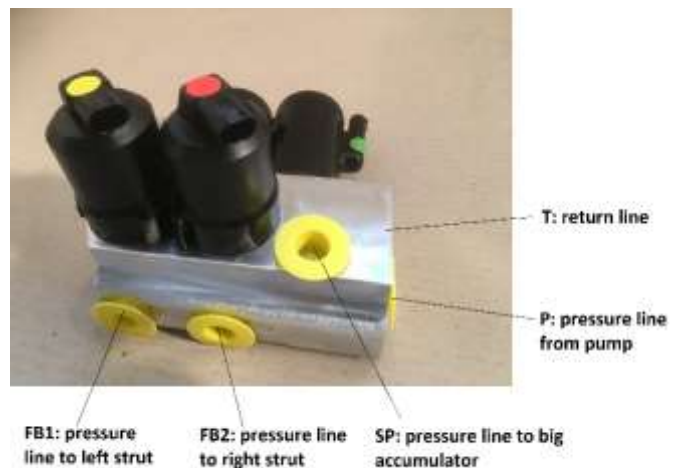
Function: The valves have a double function. One part of the valve block allows fluid to enter the strut, to close off the strut, or to leave the strut. When the ABC system is active, this control valve is operating and able to control the 3 different height levels during driving. The other part of the valve locks the struts at their current fluid levels when the ABC system is not in operation (locking valve). When the car is not running, parked or the transmission is not in gear, this valve is closed. When the car is put into drive or reverse, the valve will open. If the control module senses a malfunction and disables itself, it will also close this part of the valve for safety reasons.

Diagnosis: The car can lower after parking about 20mm because of cooling of the ABC oil. 30mm lowering after some weeks of parking is also normal. Some sinking after a period of time is normal even for a new parts. However when the car sinks too quickly or too deep, the valve block is internally leaking oil back from the struts to the system. Note that the wheels should always be free to move and turn. Another possibility is that the ride height is improper during driving, and/or the 3 height levels don't function properly when the engine is running.

Typical error codes: C1531-1: left front, C1531-2: right front, C1531-4: left rear, C1531-8: right rear

Installation: Removing and installing the valve assembly is quite easy. First bleed the system, then loosen the 17mm allen key bolts on the valve block. Working in a clean environment is strongly advised in order to keep the ABC system without debris. Please install the unit with the reverse process and bleed the system carefully after installation.

Note the marks on the valve: FB1 = Federbein links (Left strut), FB2 = Federbein rechts (Right strut), P = Druckleitung von Pumpe (Pressure line from distribution valve / Pump), SP = Druckleitung zum Druckspeicher (Pressure line to accumulator), T = Leitung zum Ausgleichsbehälter (Pressure return line to distribution valve).



This information has been written with the utmost care, nevertheless there is always the possibility that certain information will become obsolete over time, is no longer correct, or that errors have occurred during the translation, such that we cannot give any guarantees with regard to the content. No rights or liability can be dissected from this information and advices. ABCspecialist is not liable for the consequences of activities that are taken on this basis. Nothing from this information will be reproduced or published without the prior written permission of ABCspecialist.

FAQ

What is the condition of the product? The product is refurbished or remanufactured. We aim to have our products look as good as possible, but it is still an used product and possibly the product has minor signs of usage. All products are tested before being sold.

How is the guarantee of the product? We aim to provide high quality products and all products are tested before being sold. However too often guarantee is being misused as an excuse for improper usage, thus at this moment we canceled to give any guarantee in terms of time or mileage on this products.

How is the product being shipped? The product will be shipped as soon as possible after all payments are made in a strong box with sufficient protection. We use shipping with insurance and use different couriers.

Can the product be shipped by express? We offer express shipping worldwide. Please contact us by mail or phone to receive a quotation.

Do I receive the product directly? Yes we ship the product directly after all payments are completed. You can install the new unit and send us the old unit afterwards, to receive the paid deposit back.

Why do I have to pay a deposit? These refurbished parts are offered by us at competitive prices while maintaining high quality standards. In order to do so, we use the old units for recycling. To be assured the old unit is returned, you will receive an invoice for a deposit. After the process of receiving and installing the new unit, you can ship back your old unit to receive back the deposit.

How do I have to pay a deposit? Together with the invoice of the product, you have received an invoice for the deposit. Please use the payment details mentioned. Your order will only be processed if all payments are completed.

How much is the deposit? Depending on the product the deposit is a different amount.

Can I keep the old unit? No, the agreed offer includes shipping back the old unit free of heavy damage. In case no old unit or a heavily damaged unit is received, additional costs are charged.

How do I receive the deposit back? The deposit is refunded in the same way as it was paid. Please send the undamaged old unit back in the original box, properly packed and free of oil. Please fill in the return form and attach it with the package. Please ship with a courier of your choice at your costs, we advise to use a shipping with insurance as you are liable for the proper return of the old unit.

Can I cancel the buy and send the item back? Yes, within a period of 14 days you are allowed to make use of your right of withdrawal, to return the item without specification of the reason, if the item is in the condition as it was sold. Also, you are allowed to send the item back in case the product is not as expected after visual inspection. No returns are possible after installation or usage. Please read the terms and conditions of the sale for the return process.

Do you have any advices when installing the unit? Yes please check the information we supplied with each sold unit and the Mercedes Benz official installation description. More information about the ABC system can also be found on our website. We advise to only install the product in workshops experienced with the ABC-system. Please use our information as advise, no rights can be derived from it.

Should I replace any other components? Yes we advise to install a new accumulator with each valve and to change the oil of the complete ABC system together with a new ABC filter.

The connection of the oil line on the shock seems to be different. What should I do? There are different models of oil lines and connectors. When you received a line that doesn't match, we will ship you the correct line directly and for free. Please return the wrong item to us afterwards.

The valve is leaking oil, what happened? Probably the pressure limiting valve, or 1 of the several accumulators are defect, resulting in too high pressure peaks. The sealings or top cap of the valve are probably blown by the high pressure, resulting in leakage. After installation no returns are possible.

The control valve on the valve block is not responding, what happened? Please check wiring and electric contact on the connector. Please be assured you didn't dropped the valve or it had a harsh impact, such that the sensitive electronics are now defect. Please contact your insurance to check if you can get a refund. No returns are possible after dropping the valve.

The car doesn't raise, what should I do? Probably the system pressure is insufficient or the system is not calibrated. Please follow instructions by Mercedes Benz SDS or contact us for advice.

The car sinks when being parked, what should I do? Probably the ABC valve is not closing well, such that oil is leaking back from the shock to the reservoir internally. Please inspect the valve and check the error codes with SDS. Please contact us for advice.

The car is stuck in its highest position, how do I proceed? Probably the ABC valve is not opening correctly or the system is stuck in an error mode. Please inspect the valve and check error codes with SDS or contact us for advice.