

DG 1 Server Manual



DG 1 Server Manual

Version 1.0.0

Jan. 2024

COPYRIGHT

© Copyright FoundationLogic Innovation Corp 2024. All rights reserved.

AlphaPex brand by FoundationLogic Innovation Corp (hereinafter referred to as 'AlphaPex') reserves the right to make revisions, enhancements, modifications, improvements, and other adjustments to their products and services at any given time, as well as to discontinue any product or service without prior notice.

The entirety of this publication, encompassing both textual content and graphical representations, is the exclusive property of AlphaPex and may not be replicated, reproduced, or utilized in any manner without explicit written authorization from AlphaPex. The information presented in this document is subject to change without advance notice and

does not constitute a binding commitment on the part of ElphaPex. While every effort has been made to ensure the accuracy and completeness of the information contained herein, ElphaPex does not guarantee its absolute freedom from errors or omissions. ElphaPex reserves the right to rectify, update, revise, or modify the information contained within this document.

As an assembled product, this publication covers spare parts and instructions from other brands and parameters. The aforementioned rights do not extend beyond the use of product instructions, and all trademarks and registered trademarks mentioned in this publication are the property of their respective owners.

ElphaPex does not provide any express or implied grant of licenses under ElphaPex's patents, copyrights, or other intellectual property rights for the utilization of ElphaPex products or services in any combination, machine, or process. The information provided by ElphaPex regarding third-party products or services does not constitute a license, warranty, or endorsement for their use. The utilization of such information may necessitate a license from the third party, based on their patents or other intellectual property rights, or a license from ElphaPex, based on their patents or other intellectual property rights. ElphaPex assumes no responsibility or liability for assistance with third-party applications. It is the sole responsibility of customers to ensure the appropriate application of ElphaPex components in their products and applications. To mitigate risks associated with customer products and applications, it is advisable for customers to implement adequate design and operational safeguards.

Reselling ElphaPex products or services with statements that deviate from or exceed the parameters established by ElphaPex for said products or services renders all express and implied warranties associated with the ElphaPex product or service null and void. Such actions are regarded as unfair and deceptive business practices. ElphaPex cannot be held accountable or liable for any such statements.

Kindly note that the entire content aims to elucidate product specifications and parameters. The description content within the text or illustrations may vary depending on the accessory manufacturer, batch, or origin. The content serves solely for illustrative and parameter testing purposes and cannot be considered the sole standard for product evaluation. Customers should fully comprehend that parameters or indicators that do not impact the expected benefits of the product may exhibit slight deviations due to production conditions and tolerances.

ElphaPex warrants the performance of their products in accordance with the applicable specifications at the time of sale, as stipulated by their standard warranty. ElphaPex employs testing and other quality control techniques as deemed necessary to support this warranty.

However, it should be noted that not all parameters of each product are necessarily tested, unless mandated by government requirements or local mandatory regulations.

Customers are advised to obtain the most up-to-date and comprehensive information and ensure its currency and completeness prior to placing orders. The sale of all products is governed by ElphaPex's terms and conditions of sale, which are provided upon order acknowledgment.

ElphaPex

www.elphapex.com

Index

1.Overview

1.1 Server Components

1.2 Specifications

2.ElphaPexTool Guide

3.Server Configuration

3.1 Pool Configuration

4.Server Monitoring

5.Server Management

5.1 Firmware Version Check

5.2 System Upgrade

5.3 Password Change

5.4 Restoring Initial Settings

Regulations

1. Overview

The DG 1 Server is the latest machine launched by ElphaPex with scrypt algorithm, which consists of a central hash boards box, four fans, a power supply and a main control box. All DG 1 Servers are tested and configured prior to shipping to ensure easy set up.



Front View



Back View

Notes:

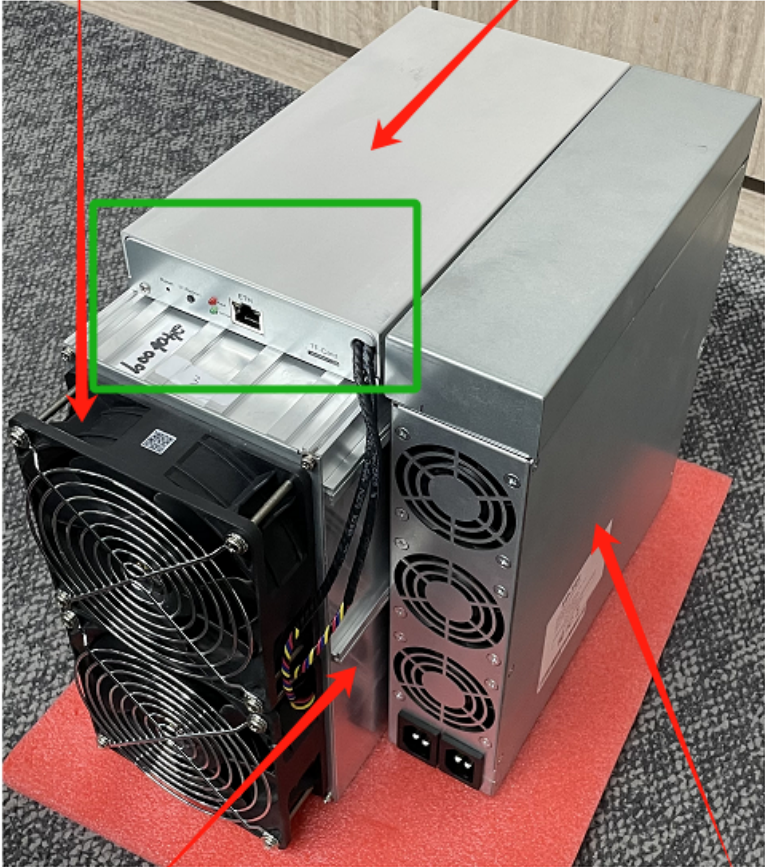
- Place the server and route cables properly to ensure proper working status of the server.
- Do not remove the server cover during normal operation. Ensure that the screws are tightly screwed and the cover is sealed.
- The server must be connected to an earthed mains socket-outlet. The socket-outlet shall be installed near the server and shall be easily accessible.
- Connect the two power sockets of the server to two power sockets at the same time. When powering off the device, ensure that all power inputs are disconnected.
- DO NOT remove any screws and cables tied on the product.
- This varies from server to server, the actual situation prevails.

1.1 Server Components

The main components and controller front panel of DG 1 Servers are shown in the following figure:

Fans

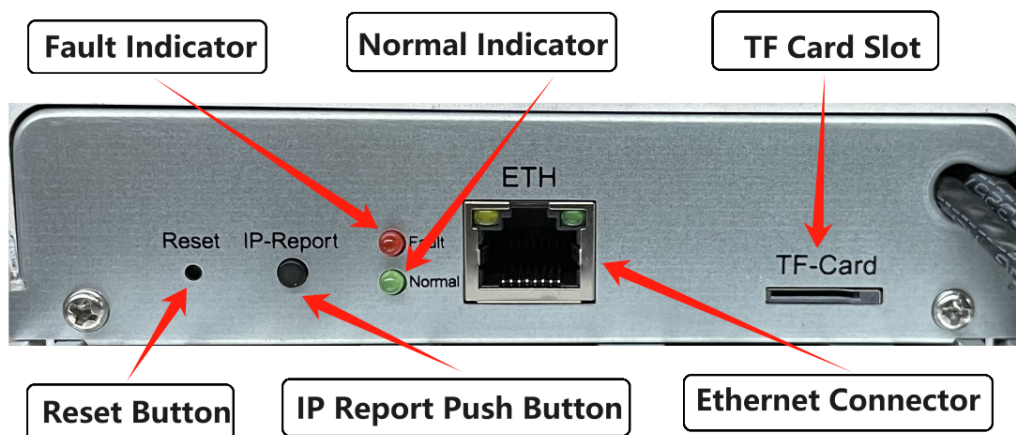
Controller



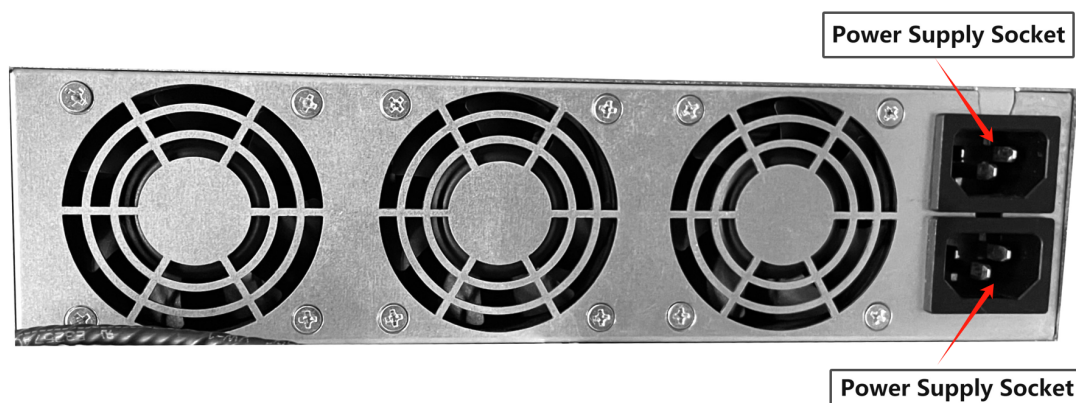
Hash Boards

Power Supply

Controller Board Interface:



FP-101 Power Supply:



Notes:

- Power supply FP-101 is part of DG 1 server. For detailed info, please refer to the specifications below.

1.2 Specifications

Version: 1.0.0

Model No.: DG 1

Product Glance	Value
Version	1.0.0
Model	DG 1
Crypto Algorithm/Coins	Scrypt
Hashrate, MH/s	11000 ± 3%

power on wall@25°C, Watt	3420 ± 10%
power efficiency on wall @25°C, J/MH	0.31 ± 10%

Detailed Characteristics	Value
Power Supply	
Power supply AC input voltage, Volt (1-1)	200-240
Power supply AC Input Frequency Range, Hz	47~63
Power supply AC Input current, Amp(1-2)	25(1-3)
Hardware Configuration	
Network connection mode	RJ45 Ethernet 10/100M
Server Size (Length*Width*Height, w/o package), mm(2-1)	369.3*196*287
Server Size (Length*Width*Height, withpackage), mm	480*289*387
Net weight, kg (2-2)	16.1
Gross weight, kg	17.4
Environment Requirements	
Operation temperature, °C	0~40
Storage temperature, °C	-20~70
Operation humidity(non-condensing), RH	10~90%
Operation altitude, m(3-1)	≤2000

Notes:

- Caution: Wrong input voltage may probably cause equipment damaged
- Max condition: temperature 40°C, altitude 0m
- *Ensure that two power cables are used at the same time. The typical current of each cable is 10A.*
- *In the altitude range of 900 ~ 2000m, the maximum operating temperature drops by 1°C for every 300m increase.*

2. ElphaPexTool Guide

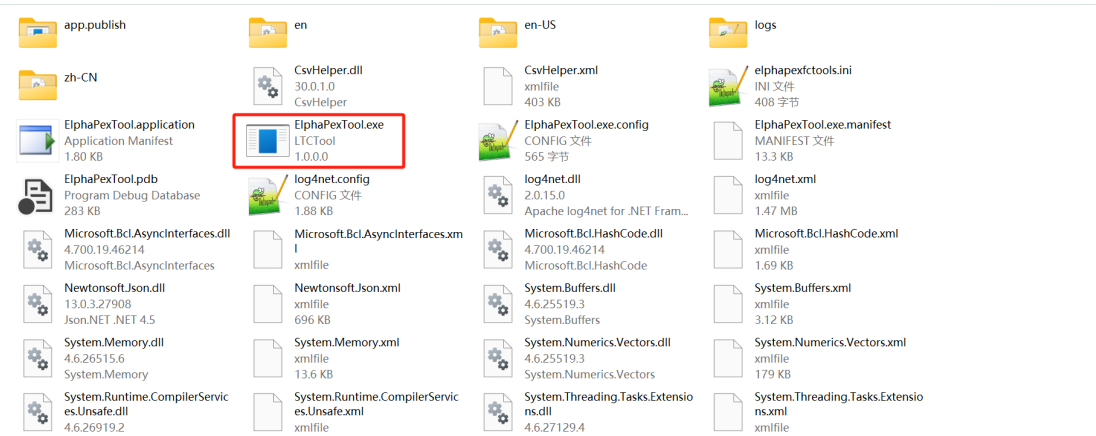
Note: You can **SKIP** this step if you already know its IP address and can use website to configure the mining info.

1. Get software pack ***ElphaPexTool_v1.0.0.zip*** from www.elphapex.com

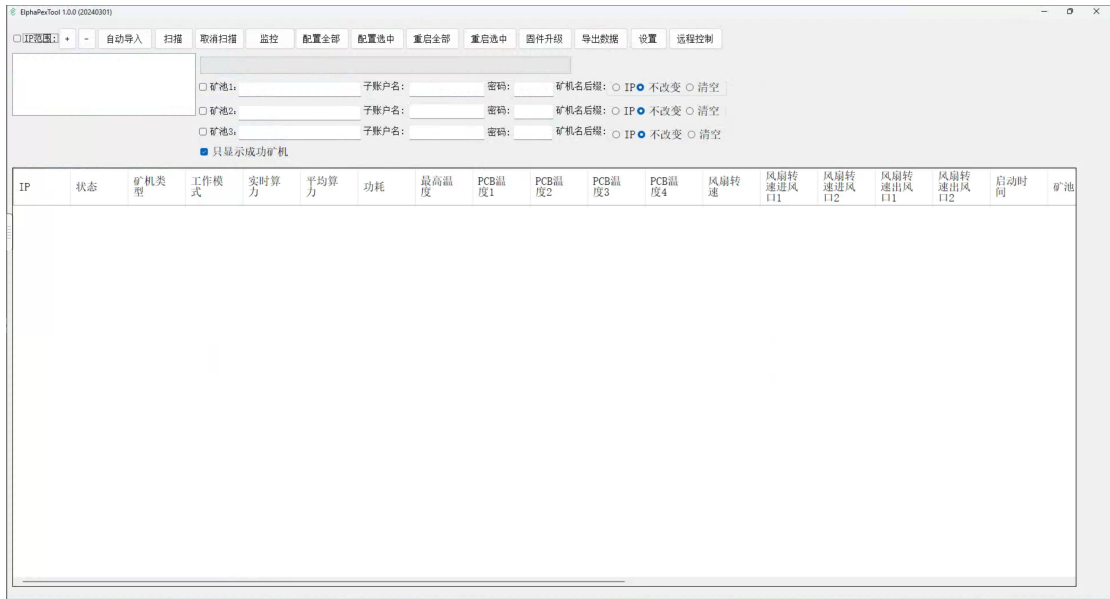
Notes:

- ***ElphaPexTool*** is now only available on windows platforms

2. Extract the file.

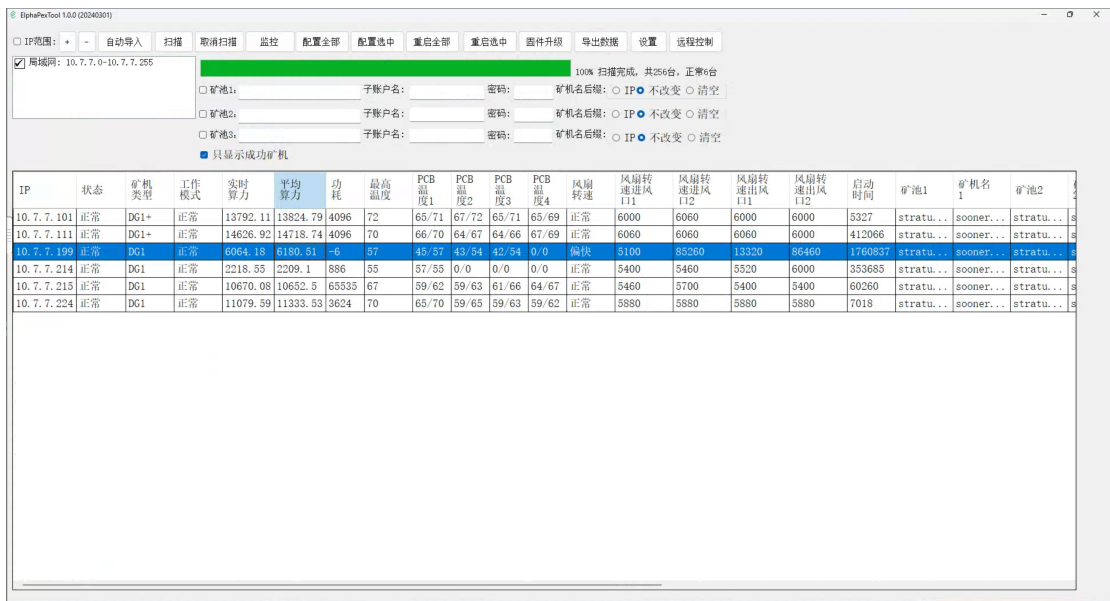


3. Open the software ***ElphaPexTool.exe*** and click on **[+]** , Add the corresponding network segment range



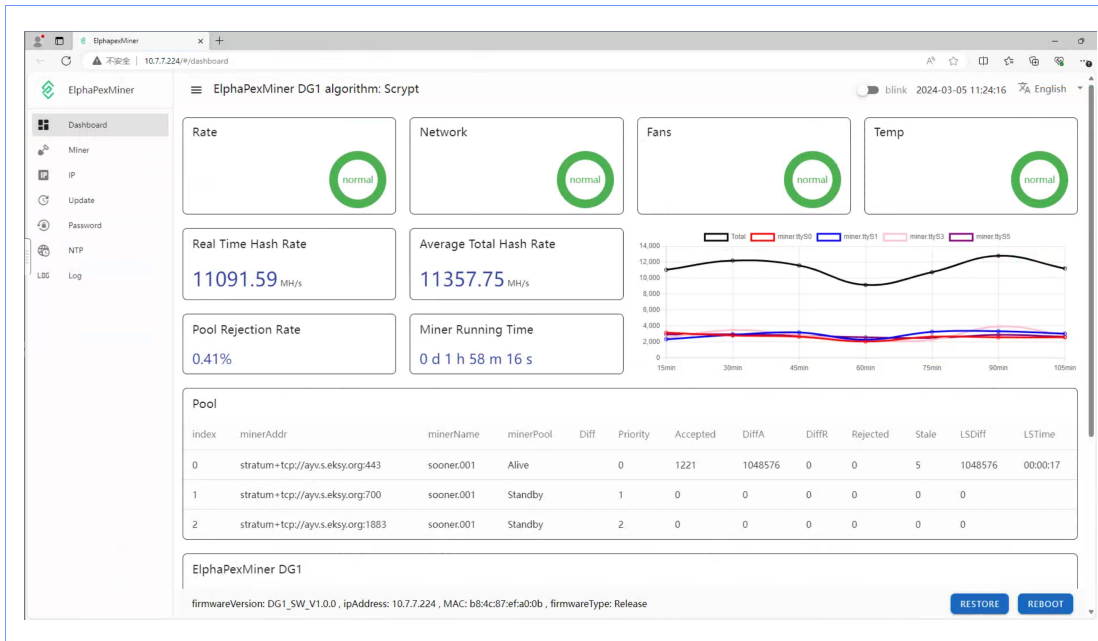
4. Press the **扫描** button.

The information about servers in the current network segment is displayed in a list.

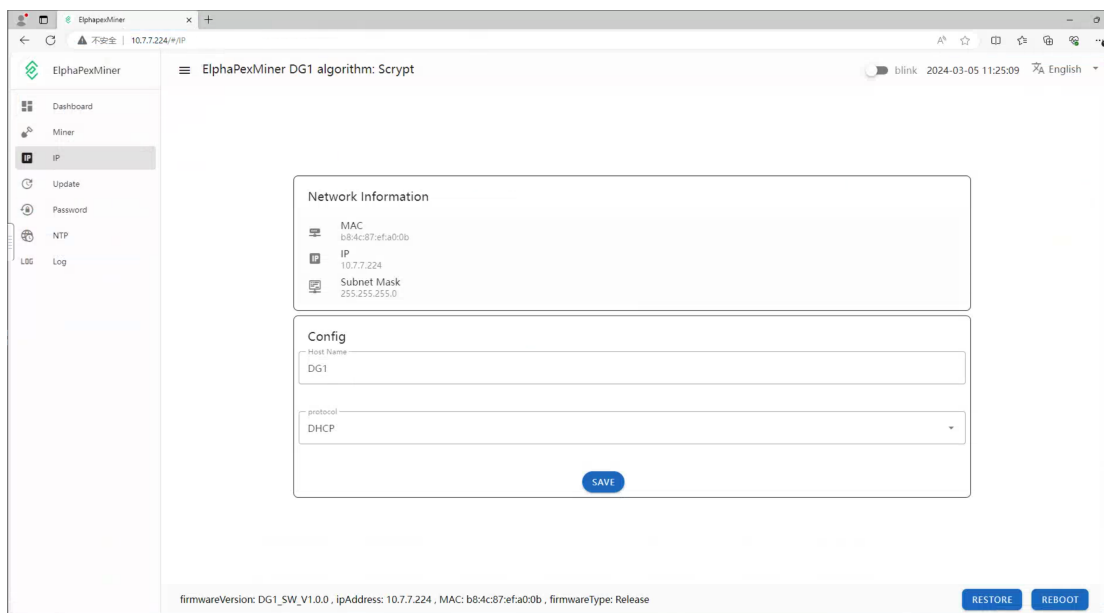


5. Double-click the selected line, this will open the browser to the server's web page.

6. Proceed to login using **root** for both the username and password.



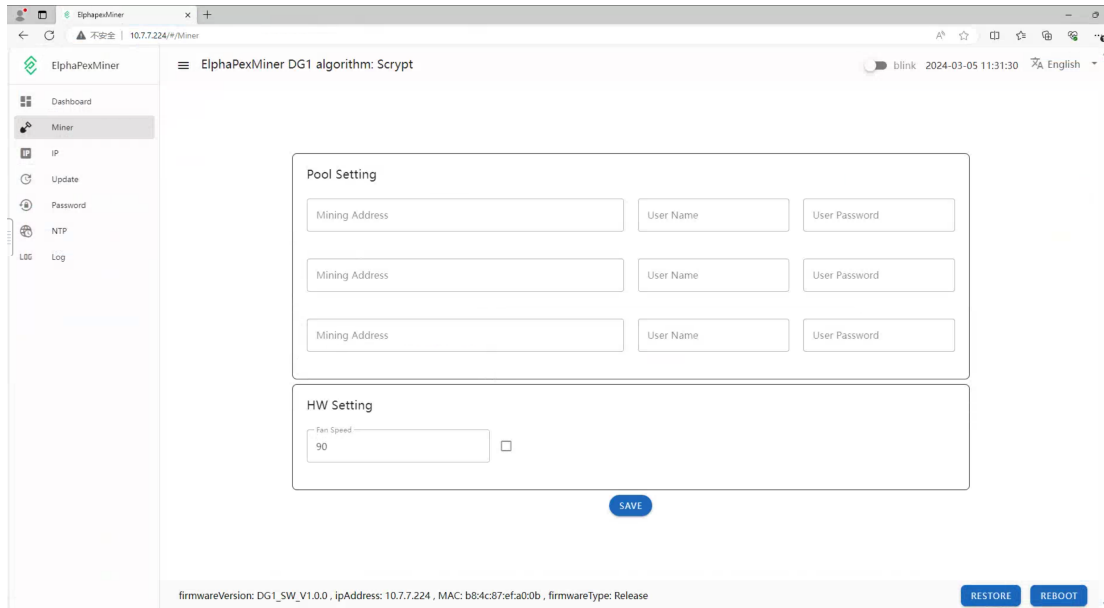
- In the **IP** section, you can assign a Static IP address (optional).
- Enter the IP address, Subnet mask, gateway and DNS Server.
- Click **SAVE** button.



3. Server Configuration

3.1 Pool Configuration

- Enter server web page, click **Miner** Section:



Notes:

- Note that please **DO NOT** adjust the fan speed by yourself although it can be configured. The server itself will tune the fan speed automatically going along with the environment temperature changes.

2. Set the options according to the following table:

Option	Description
Mining address	Enter the address of your desired pool.
Name	Your worker ID on the selected pool.
Password (optional)	The password for your selected worker.

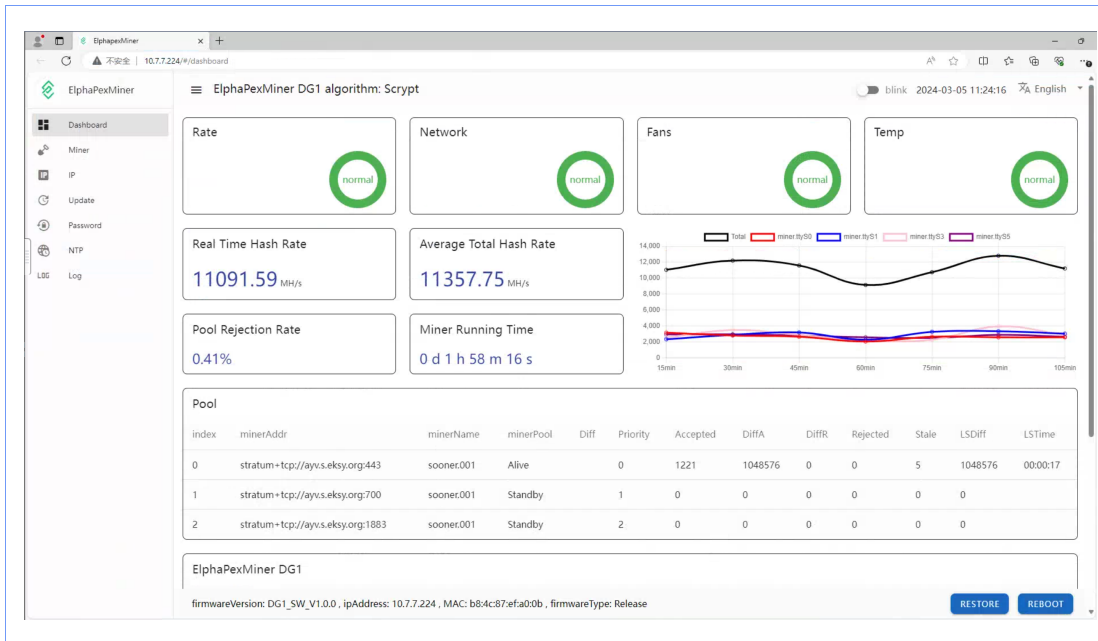
Notes:

- The DG 1 server can set up three mining pools(pool 1 to pool 3) at the same time.
- The priority of pools 1 through 3 is reduced in turn, and when a pool with a higher priority is offline, a pool with a lower priority will be put into use

3. Click **SAVE** after the configuration.

4. Server Monitoring

1. Click **Dashboard** marked below to check the server status (taking DG 1 as an example).



Notes:

- When the temperature of the outlet reaches 85 °C, the temperature control policy of the DG 1 server will activate the high temperature protection and the mining process will stop

2. Monitor your server according to the descriptions in the following table:

Option	Description
chipNum	Number of chips detected in the chain.
Frequency	ASIC frequency.
rate	Network level hash rate of each hash board (MH/s).
theoryHash	Theoretical hash rate of each hash board (MH/s).
hashrate	Board level hash rate of each hash board (MH/s).
picTem	Onboard Temperature of each hash board(inlet/outlet) (°C).
chipState	Chip operating state <ul style="list-style-type: none"> • Normal • Abnormal

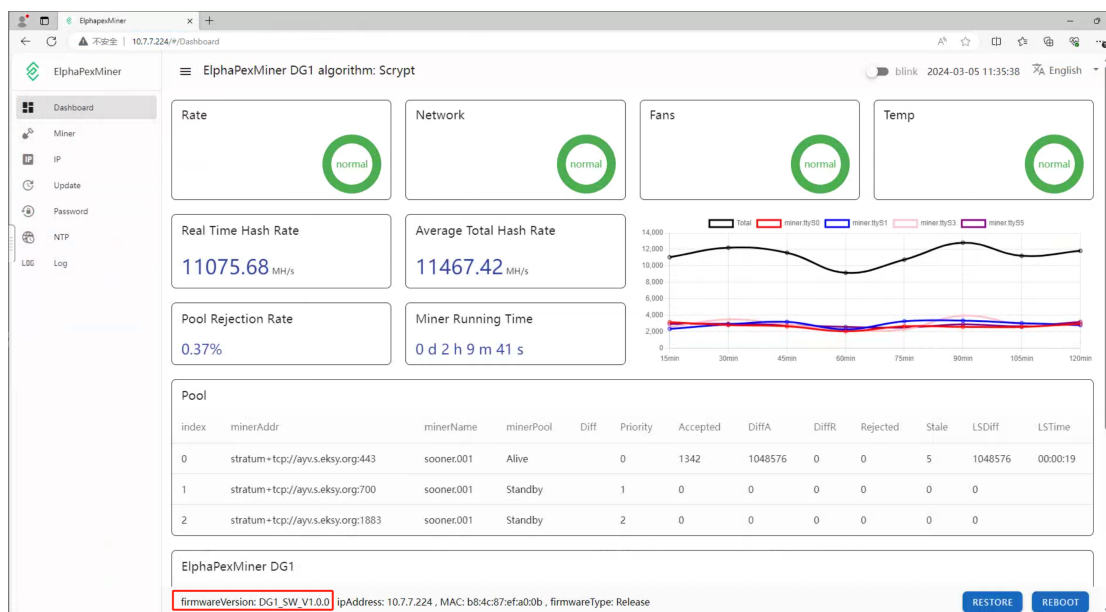
SN

Series Number of each hash board

5. Server Management

5.1 Firmware Version Check

1. Enter the backstage web site of your server, find the firmware version on the bottom.
2. **firmwareVersion** displays the current release version your server uses. In the examples below, the server is using firmware version: **DG1_SW_V1.0.0**

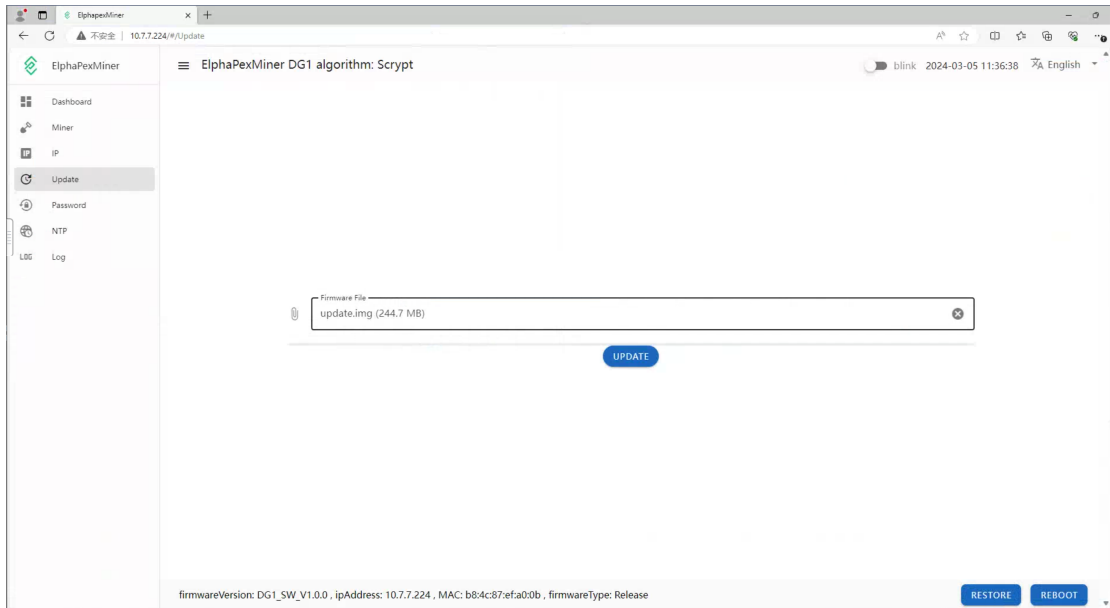


5.2 System Update

Notes:

- During the firmware upgrade, ensure that the server remains powered on and no other operations are conducted.
- The DG1 server provides support for firmware upgrades using the **.img** and **.zip** file extensions.

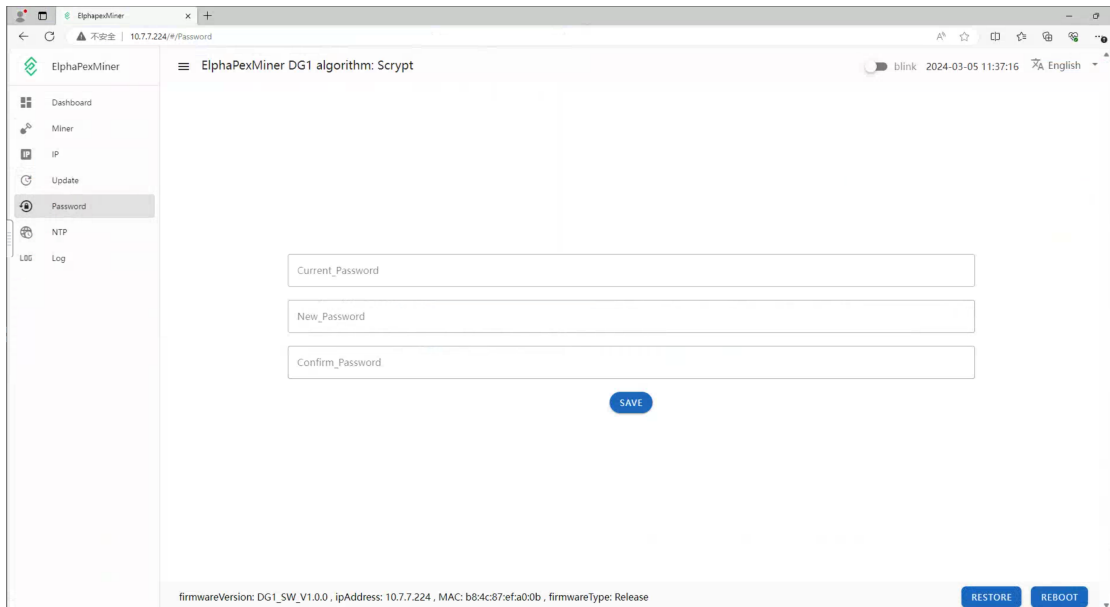
1. In Web site page, click **Update** to enter the firmware upgrade page.
2. Click **Firmware File** input field, select the **.img** or **.zip** firmware file, and then click **UPDATE**, The server will start the firmware update process.



3. When the update process is completed, the server will restart and it will turn to the Dashboard page.

5.3 Password Change

1. In Web site page, click **Password**.
2. Enter the current password and the new password, then click **SAVE**.

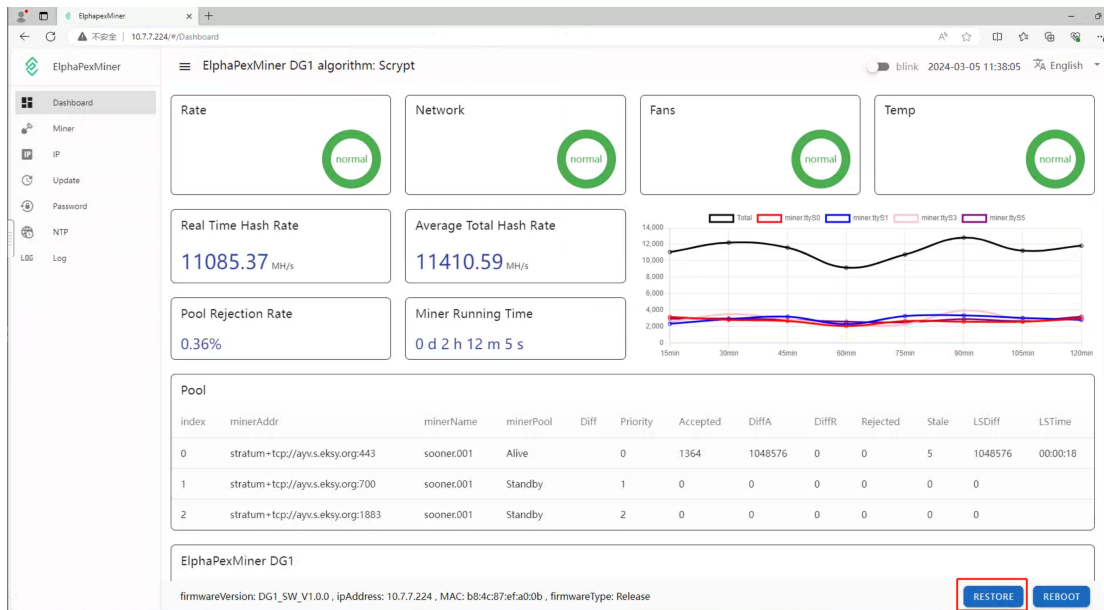


5.4 Restoring Initial Settings

Notes:

- The **RESTORE** operation will clear the pool Settings and restore the original password. Exercise caution when performing this operation.

1. In Web site page, Click **RESTORE** button.



Regulations:

Notice:

This device complies with part 15 of the FCC Rules. Operation is subject to the following two conditions:

(1). This device may not cause harmful interference.

(2). This device must accept any interference received, including interference that may cause undesired operation.

CAN ICES-003(A) / NMB-003(A)

Note:

This equipment has been tested and found to comply with the limits for a Class A digital device, pursuant to part 15 of the FCC Rules. These limits are designed to provide reasonable protection against harmful interference when the equipment is operated in a commercial environment.

This equipment generates, uses, and can radiate radio frequency energy and, if not installed and used in accordance with the instruction manual, may cause harmful interference to radio communications. Operation of this equipment in a residential area is likely to cause harmful interference in which case the user will be required to correct the interference at his own expense.