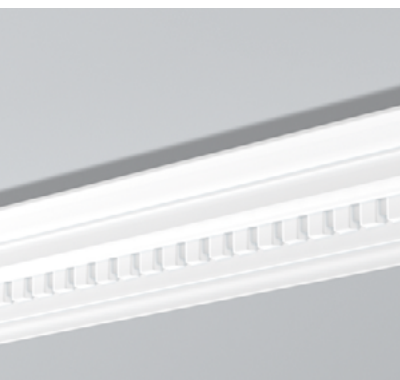


# ALLEGRO<sup>®</sup> Mouldings



ALLEGRO<sup>®</sup>



## 1. MATERIAL

Constituent material	High-density, yellow, rigid polyurethane foam.
Density	Approx. 200 kg/m <sup>3</sup>
Installation temperatures	+10°C to +30°C (ideal +15°C to +25°C)
Temperatures resistance	Max. +70°C
Surface hardness (Shore D)	Approx. 23 according to norm DIN 53505/ISO 868

## 2. SPECIFIC PROPERTIES

### Factory Finish:

Matt white acrylic primer to be painted.

### Visible surfaces:

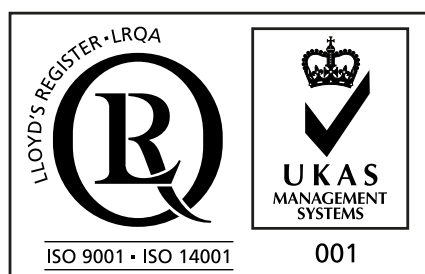
The manufacturing technique guarantees a hard and smooth surface, with sharp edges, and the exact reproduction of the motif.

### Gluing surfaces:

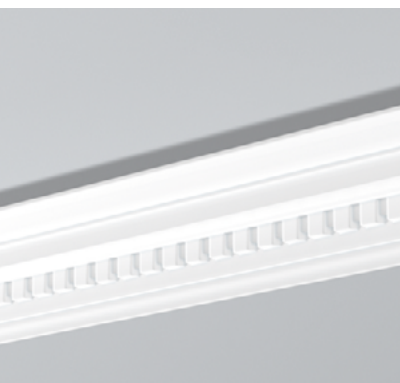
Slanted surfaces (2°) for easier fitting and milled for better glue adhesion.

### Dimensions:

Length of a moulding: 2 m / 6.56 ft (tolerance ± 5 mm).



# ALLEGRO<sup>®</sup> Mouldings



ALLEGRO<sup>®</sup>

## Thermal and hygrometric dilatation:

Tests have shown that the material has a behaviour close to that of wood: its dimensions can undergo the influence of variations of temperature and more particularly of humidity. The same precautions of use are applied. Compliance with fitting and storage requirements and good gluing are vital to ensure the quality and the durability of the product.

## 3. USE

### Applications:

Flat, sheltered from the sun and from humidity. Storage temperature +15°C/ +25°C, rel. Humidity 45% to 65%. Must be handled carefully. For the best result, the product will be fitted and stored in conditions close to those of final use. Fitting on a wet backing surface (fresh plaster) and in forced drying conditions (heat gun, dehumidifier, exceptionally high temperature) are to be ruled out. The installation instructions must be followed.

### Laying surface:

The following laying surfaces are suitable: indoor plastered or papered surfaces, coated plaster. Surfaces must be clean, dry, free from dust, degreased and flat; rough down if necessary. If the product is to be applied to particular backing surfaces, please consult our technical department.

### Tools

HDPS-PU saw and NMC VARIO / VARIO PLUS mitre-box.

### Adhesive and joints:

Glue and jointing material: ADEFIX<sup>®</sup>

Width of joints: 3mm

Recommended room, adhesive and profile temperature: +15°C to +25°C

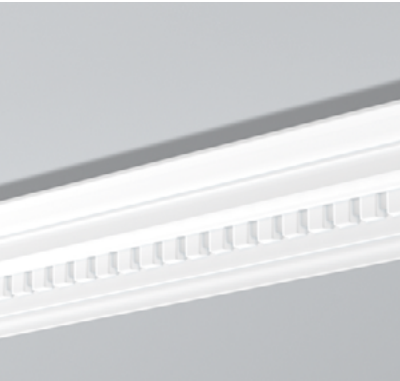
Cleaning product for Adefix (before hardening): Water

After hardening: mechanically

### Finishes:

ALLEGRO<sup>®</sup> mouldings can take all paints thanks to the coat of primer applied at the factory, except for silicate products.

# ALLEGRO® Mouldings



ALLEGRO®

## 4. SPECIAL INSTRUCTIONS

### Regulation concerning dangerous substances:

ALLEGRO® polyurethane products are to be classified neither under "very toxic" nor under "toxic", according to the regulations concerning dangerous substances.

### Important note:

The elements are strictly decorative to the exclusion of any structural function; they are not designed to withstand loads and should be isolated by flexible joints from elements likely to convey strains or movements.

Physical properties of the products and the laying surfaces cause different natural expansion coefficients, and induce that the joint and the glue move or that (fine) hair cracks can be seen. This fact does not constitute grounds for complaint.