

FASERFIX® SUPER KS FASERFIX® SUPER

THE COMPLETE DRAINAGE SYSTEM - EXTREMELY ROBUST.
FOR EXPOSURE TO HEAVY GOODS VEHICLES IN PUBLIC AREAS AND INDUSTRY.



AT A GLANCE

- ✓ Highest bending tensile strength
- ✓ Patented SIDE-LOCK boltless locking system
- ✓ Available with built-in fall
- ✓ With safety joint for easy sealing



FASERFIX® SUPER KS

FASERFIX® SUPER

THE COMPLETE DRAINAGE SYSTEM - EXTREMELY ROBUST.
FOR EXPOSURE TO HEAVY ROAD TRAFFIC IN PUBLIC AREAS AND INDUSTRY.

REQUIREMENT

Surface water in all kinds of areas must be allowed to drain away quickly and reliably. This requires drainage channels that will permanently withstand the loads applied from the expected traffic conditions. In particular this applies to zones exposed to heavy traffic in public and industrial areas. In addition to their technical function, drainage channels are expected to contribute visually to the attractiveness of surfaces with their form, colour and the material of the gratings. Some special applications also call for flexible channel systems - the products must be capable of being adapted to all drainage tasks.



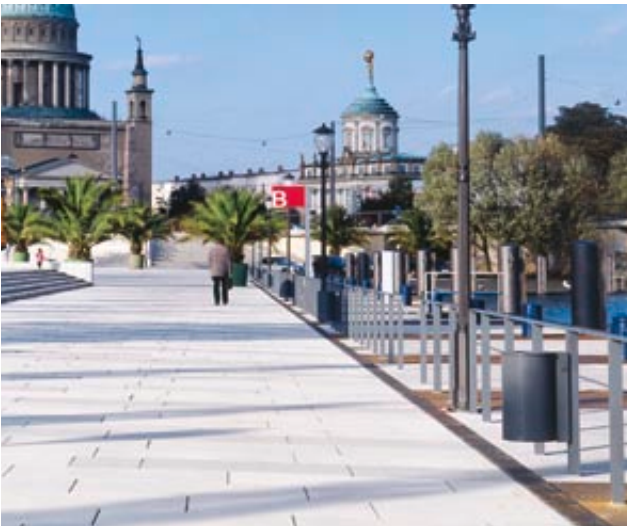
SOLUTION

FASERFIX SUPER channels offer solutions for any type of application in heavy duty traffic areas. They are manufactured from fibre-reinforced concrete which, compared to normal concrete, has greater strength and reduced thickness of the side walls. In addition, they feature a higher bending tensile strength. No supporting backing of the channel body is required during installation. There are no restricting cross ridges in the base of the channel. The top edges and bearing surfaces for the gratings consist of corrosion-proof angle housings in galvanised steel or stainless steel which are firmly tied to the channel body through ties that reach down to the base of the channel. FASERFIX SUPER are resistant to frost and salt. The lower parts of the channels feature safety joints that can be sealed during installation against liquids, using elastic injection sealers such as the MASTERFLEX 700 FR gun grade polysulphide sealing compound. The channels can be supplied with or without in-built fall. Finally, numerous gratings for different load classes are available in the materials ductile iron, galvanised steel or stainless steel. With the SIDE-LOCK boltless locking system the gratings are safely fixed to the channels. The classification and testing meets the requirements of DIN EN 1433. Upon request we are happy to supply copies of the test certificates issued by the official material testing station at the University of Karlsruhe. FASERFIX SUPER channels are CE-marked.

APPLICATION AREAS

Traffic areas for industry and commerce, trade, trade fairs/exhibitions, railway stations, airports, ports, container handling stations, sewage works, power stations,

building yards, barracks, roads/motorways, petrol stations and service areas, parking lots, traffic-calmed zones, play streets, urban squares etc.



Potsdam, Germany



Airport Brussels, Belgium



Petrol stations all over the world



Main station Berlin, Germany

FASERFIX® SUPER KS FASERFIX® SUPER

TAILOR-MADE SOLUTIONS.

EXAMPLES OF TAILOR-MADE SOLUTIONS FOR INDIVIDUAL CUSTOMER REQUIREMENTS.

In each project the conditions to be handled by a drainage system are different. Therefore systems have to be flexible enough to allow standard products from serial production to be complemented by special items. To achieve that, HAURATON will study the individual requirements of each project and work together with the architects at an early stage. The company has a specialised team dealing exclusively with non-standard solutions - from the outline design stage right through to timely delivery and support during installation. In this way a suitable solution will be found for all applications. HAURATON channels are very flexible and can be adapted individually. Some special formats include cutting to required length, mitred cuts, holes and openings or incorporating connection pipes.

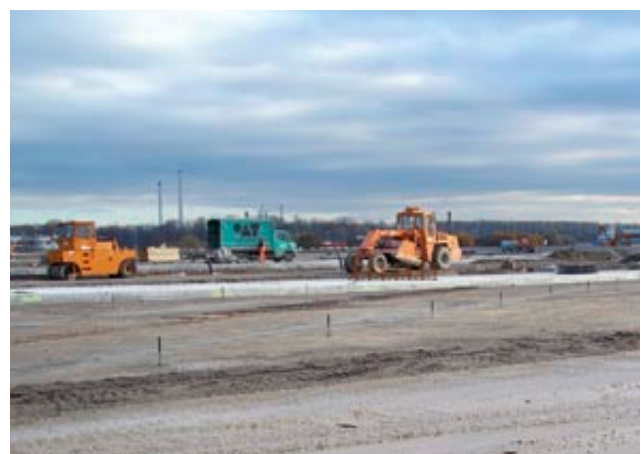
WÖRTH, DaimlerChrysler

On a site of about 550,000 square metres very close to the factory in Wörth, DaimlerChrysler is in the process of constructing the so-called EVZ - a development and test centre with test runs for putting heavy goods vehicles (HGV) through their paces. There are various stretches of track, one of them an automated bad surface track (ASW), on which prototypes and serial models are put through tough long-distance tests, with some of the vehicles being controlled via remote control.

For building projects of such dimensions the FASERFIX SUPER drainage system is the ideal solution. Standard production parts are complemented with customised channels that have been designed at the factory and are easy to install by the contractors following the installation instructions that are also supplied. Numerous mitred cuts, non-standard lengths and connection holes make up the complex drainage network that follows the routing of the test tracks.

Design of the ASW: Tilke - Engineers and Architects, Aachen/Olpe

Contractor: ASW Consortium, including the companies Strabag, Züblin, Grötz and Reif



The scheme comprises the following HAURATON channels:
2.500 m FASERFIX SUPER KS 100
850 m FASERFIX SUPER 150
200 m FASERFIX TRAFFIC SUPERBLOC 200

MANNHEIM, SHUNTING YARD

For safety reasons, overhead power lines at railway stations have to be earthed. For the shunting yard at Mannheim, HAURATON has developed a system together with Deutsche Bahn which combines drainage channels with an earth conductor. The solution provides one earthing cube per linear metre of channel which has been incorporated into the channel body underneath the angle housing. These are connected to earthing cables of 1 cm thickness. The function of the SIDE-LOCK boltless locking system remains fully intact.



WAGHÄUSEL, SITEC

The Sitec company is part of the glass industry. Its products are manufactured on highly technical machines and in extreme temperatures. A channel system has been developed for the company's factory floors that combines the routing of service pipes for the machines with a reliable drainage system. At the outline design stage, the project team at HAURATON developed a complex system comprising FASERFIX SUPER channels of different nominal widths. The factory produced numerous adapters between different nominal widths as well as T-pieces and crossovers that fitted exactly and were quick to install.



FASERFIX® SUPER KS FASERFIX® SUPER

TAILOR-MADE SOLUTIONS.

EXAMPLES OF TAILOR-MADE SOLUTIONS FOR INDIVIDUAL CUSTOMER REQUIREMENTS.

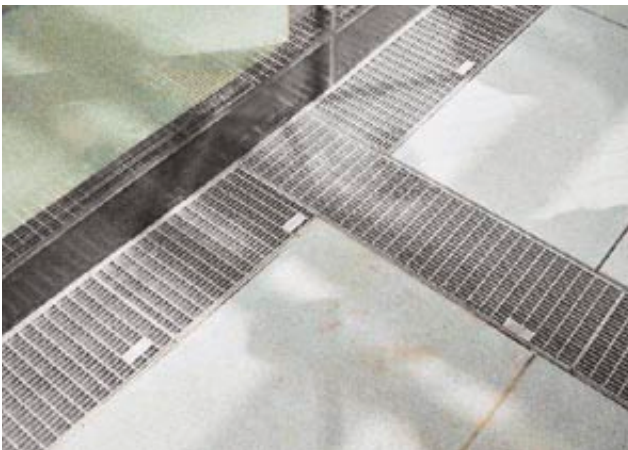
"BISCHOFSCHEIM, AM WINGERTSPFAD": EMBANKMENT CHANNEL WITH CLOSING GRATING

At the new construction site "Am Wingertspfad" in Bischofsheim open FASERFIX SUPER channels were used in different nominal widths to drain the precipitation water to the central percolation area. The whole drainage network consists of FASERFIX SUPER channels in different nominal widths and types. At the end of the drainage lines the water emerges into the open through a channel that has been truncated to suit the existing slope of the embankment as specified by the customer. An exit grating was fitted to safeguard the system.



"DRESDEN, WIENER PLATZ"

The "Wiener Platz" is the central traffic hub in Dresden. The different transport modes, such as railway, cars and buses, tramway, bicycles and wheelchairs are interlinked on different levels. For a visually appealing streetscape design of surfaces and façades, the FASERFIX SUPER channels and FASERFIX POINT yard gullies were fitted with custom-fabricated stainless steel gratings. A special request from the client and architects was the narrow mesh size of the gratings that provides better safety for pedestrians, cyclists and wheelchair users and prevents the ingress of coarser dirt items into the drainage system. The effect adds to the harmonious overall design that does justice to the outstanding architecture.



FASERFIX® SUPER KS

THE COMPLETE DRAINAGE SYSTEM - EXTREMELY ROBUST.
FOR EXPOSURE TO HEAVY ROAD TRAFFIC IN PUBLIC AREAS AND INDUSTRY.

HIGH-STRENGTH SIDEWALLS OWING TO FIBRE-REINFORCED CONCRETE

The standard DIN EN 1433 stipulates sufficient sidewall strength for transport and installation, i.e. without the bracing effect from the gratings that are installed subsequently. The U shape of our drainage channels has passed the test of time over many years. FASERFIX SUPER channels are manufactured from fibre-reinforced concrete. The sidewalls are uniformly slender and very robust - even for short non-standard lengths. FASERFIX SUPER KS and FASERFIX SUPER channels can be installed without the gratings being fitted.

FASERFIX SUPER KS and FASERFIX SUPER channels meet the requirements of DIN EN 1433 and are suitable for the following load categories:



**CATEGORY A 15,
LOAD CLASS 15 KN**



**CATEGORY B 125,
LOAD CLASS 125 KN**



**CATEGORY C 250,
LOAD CLASS 250 KN**



**CATEGORY D 400,
LOAD CLASS 400 KN**



**CATEGORY E 600,
LOAD CLASS 600 KN**



**CATEGORY F 900,
LOAD CLASS 900 KN**

4

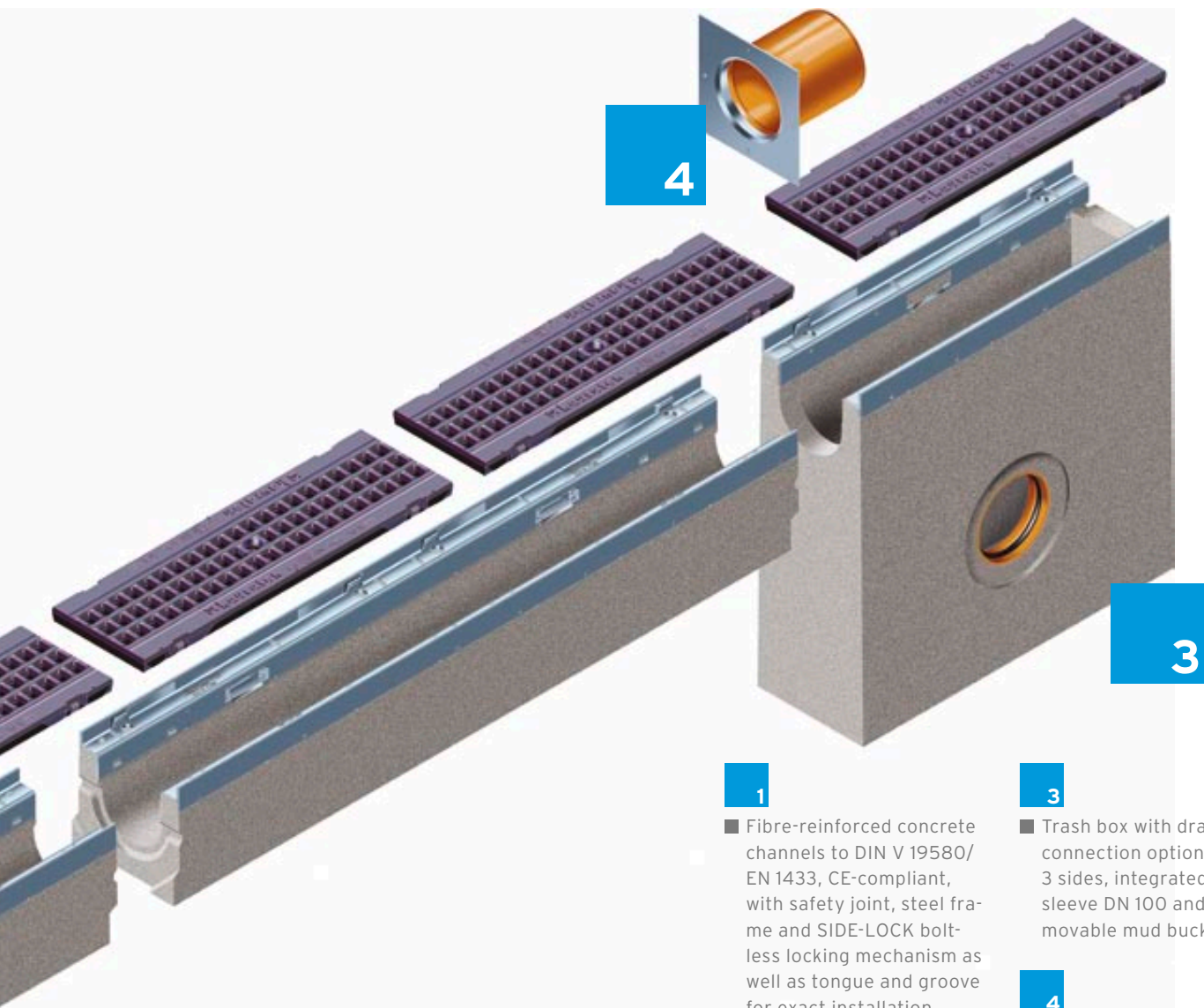
2

1

SAFETY IN PEDESTRIAN ZONES

FASERFIX SUPER channels with their great choice of gratings are also used in pedestrian zones, on market squares and other public areas. To provide greater safety for pedestrians, the gratings with narrow slot sizes were developed.





- 1** Fibre-reinforced concrete channels to DIN V 19580/EN 1433, CE-compliant, with safety joint, steel frame and SIDE-LOCK boltless locking mechanism as well as tongue and groove for exact installation
- 2** Numerous grating options, e.g. GUGI-Ductile iron mesh gratings
- 3** Trash box with drainage connection options on 3 sides, integrated KG sleeve DN 100 and removable mud bucket
- 4** End caps with and without outlets

GRATING OPTIONS FASERFIX®SUPER KS CHANNELS AND FASERFIX®SUPER CHANNELS

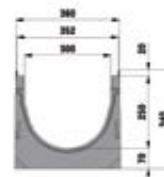
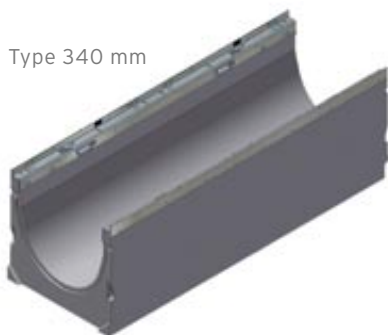
Load categories	GUGI-Ductile iron mesh grating*		Ductile iron grating*		Mesh grating*		Slotted grating*		Perforated grating*		Closed covers*		Longitudinal grating*	
	SUPER KS	SUPER	SUPER KS	SUPER	SUPER KS	SUPER	SUPER KS	SUPER	SUPER KS	SUPER	SUPER KS	SUPER	SUPER KS	SUPER
A 15							100							100
B 125					100									
C 250			100, 150, 200	300	100, 150, 200	300	100		100		100			
D 400			100, 150, 200	300, 400										
E 600	100, 150, 200	150, 200, 300, 400	100, 150	150, 200, 500	100, 150, 200						100		300, 400	
F 900	100		100, 150	150, 200, 300, 400										

* sizes are nominal widths

FASERFIX® SUPER KS 300

FASERFIX® SUPER KS 300 - Channel lower parts

Type 340 mm



	Length mm	Width mm	Height mm	Drainage cross- sect. cm ²	Weight kg	Article No.
Type 340 mm	1000	360	340	634	117,0	14040

FASERFIX® SUPER KS 300 - Gratings, class E 600

GUGI-Ductile iron mesh
grating, black



	Length mm	Width mm	Height mm	Intake cross- sect. cm ² /m	Weight kg	Article No.
GUGI-Ductile iron mesh grating, black	500	349	20	1196	18,6	14068

FASERFIX®SUPER KS 300

FASERFIX®SUPER KS 300 - Accessories

End cap closed,
type 340



	Length mm	Width mm	Height mm	Weight kg	Article No.
End cap closed, type 340	-	-	-	2,3	14085
Cutting to length of NW 300	-	-	-	-	993
Mitre cuts of NW 300 (two cuts per connection)	-	-	-	-	998
Inserting of PVC union connectors DN 200*	-	-	-	-	984
Sealing material Masterflex 700 FR Gun Grade, cartridge 450 ml**	-	-	-	1,0	19000
Primer Masterflex 700 A SP, capacity 1000 ml	-	-	-	1,0	20000
Primer Masterflex 700 FE (steel), capacity 1000 ml	-	-	-	1,1	19950
Toolkit for sealing material Masterflex 700 FR Gun Grade	-	-	-	3,1	10025
Fixing-system EP, empty conduit in the channel bottom, (2 pieces per running metre)	-	-	-	-	703
Steelbars for fixing system (2 pieces per running metre)	-	-	-	-	704