

True Cast Resin

Resin Formulated for Reliable, Precise Casting of Detailed Patterns

True Cast Resin is a wax-filled material designed for precision casting of intricate jewelry and complex engineering components up to 5 mm thick. It delivers highly accurate parts with exceptional detail and smooth surfaces while being compatible with a wide range of burnout schedules.

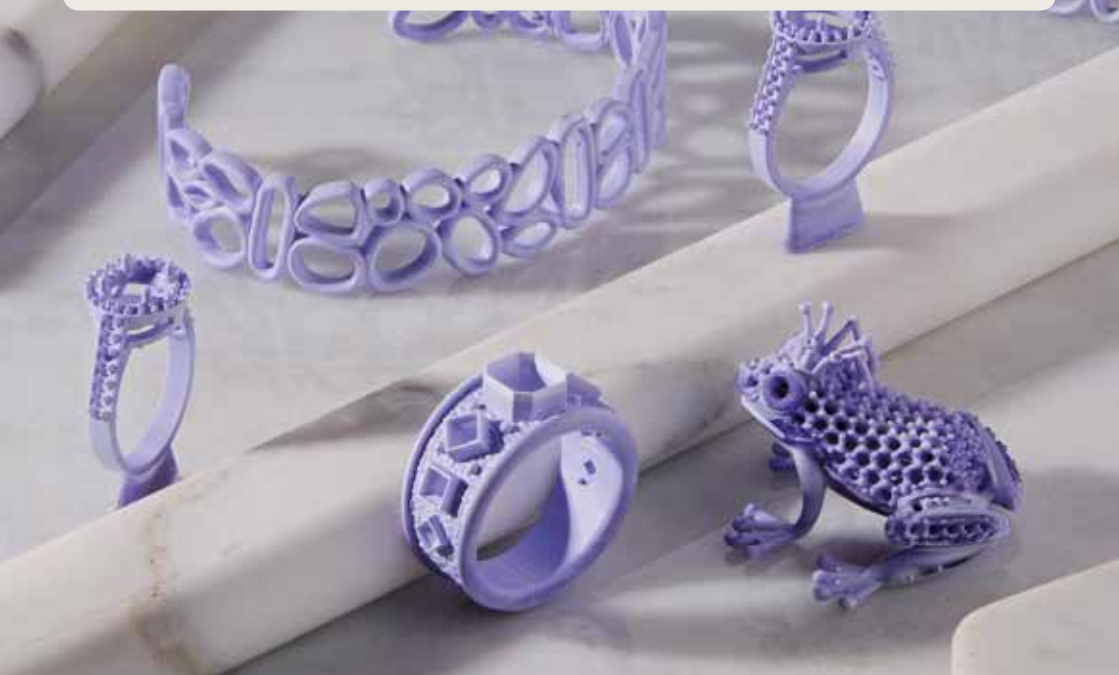
Patterns printed in True Cast Resin exhibit low thermal expansion, minimal shrinkage for accurate, reliable casting and burnout cleanly with 0.03% ash content.

Medium Jewelry

Medallions and Figurines

Heavy Jewelry

Small Engineering Components



FLTCLV01

Prepared 21/04/2025

Rev. 01 21/04/2025

To the best of our knowledge the information contained herein is accurate. However, Formlabs, Inc. makes no warranty, expressed or implied, regarding the accuracy of these results to be obtained from the use thereof.

Burnout Characteristics	METRIC	IMPERIAL	METHOD
Ash Content	0.03%	0.03%	ASTM D2584
Thermal Expansion	174.1 $\mu\text{m}/\text{m}/^{\circ}\text{C}$	96.7 $\mu\text{in}/\text{in}/^{\circ}\text{F}$	ASTM E 831-13
Detected Transition Metals (>10 ppm)	Al, Ca, K, Mg, Na, Pb, Si, Sn	Al, Ca, K, Mg, Na, Pb, Si, Sn	ASTM E 1479-16

True Cast Resin TGA Trace

