

HANS J. WEGNER X ILSE CRAWFORD

WISHBONE CHAIR





LINKS TO MATERIAL

[PRESS RELEASE](#)

[DESIGNER PROFILE, HANS J. WEGNER](#)

[DESIGNER PROFILE, ILSE CRAWFORD](#)

[HIGHRES IMAGES](#)

[DESIGNER PORTRAITS](#)

[COMPANY PROFILE](#)

HANS J. WEGNER X ILSE CRAWFORD

WISHBONE CHAIR

The Wishbone Chair is now available in nine new colors by Ilse Crawford.

To celebrate Hans J. Wegner's more than 70 years of collaboration with Carl Hansen & Son, the company is now expanding its collaboration with London-based designer Ilse Crawford to include the Wishbone Chair in nine new colors.

"We wanted to develop a range of colors that reflect the times we live in, and we believe these subdued tones will resonate with a contemporary audience," says Ilse Crawford. "We are inspired by the paintings of Danish artist Per Kirkeby, who beautifully reflects his interest in nature. These are not standard colors governed by the trends of the time, but colors that add depth and complexity to any interior."

The picturesque colors celebrate plants, minerals and the soil that make up the raw beauty of the Nordic landscape, and they work both individually and in interaction with each other. "Colors are so closely related to our emotions and our mood," Crawford says, "and we believe that these subdued tones will help create a warm, relaxed and natural environment."



HANS J. WEGNER X ILSE CRAWFORD
WISHBONE CHAIR



PEWTER



HOLLYHOCK



BARLEY



SEAWEED



TERRACOTTA



CLAY



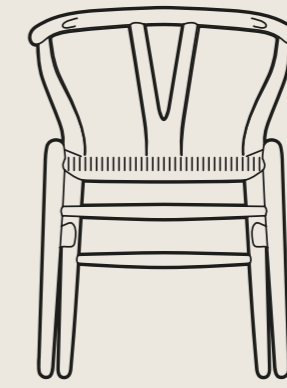
NORTH SEA



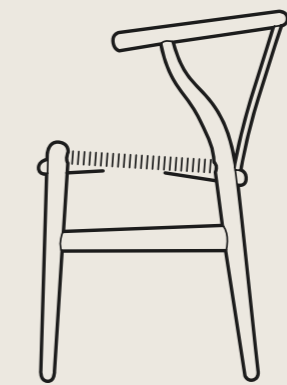
SLATE



FALU



55 cm / 21,6"



76 cm / 29,9"
70 cm / 27,5"

45 cm / 17,8"

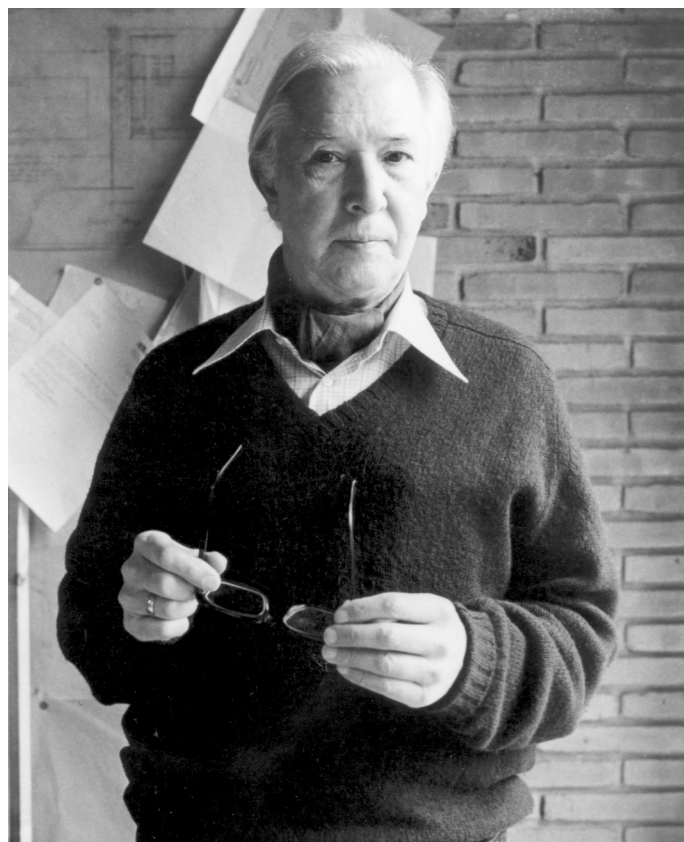
51 cm / 20"



51 cm
20"

55 cm / 21,6"





HANS J. WEGNER
1914 - 2007

Danish designer Hans J. Wegner is considered one of the leading furniture designers of the 20th century. He was a driving force in the Danish Modern movement, which helped change the way people viewed furniture in the 1950s and 1960s. Wegner is particularly renowned for his chairs, and is often referred to as the master of the chair. He created almost 500, many of which have achieved iconic status. He described design as an organic process, in which he started with the function and focused on refining and simplifying, in an effort to reduce the chair to its simplest possible form. Wegner loved being creative and had a prodigious output. Hundreds of his designs have been in production over the years, and many of them are still made to this day.



ILSE CRAWFORD
1962 -

Ilse Crawford is a London-based designer, academic and creative director with a simple mission to put human needs and desires at the centre of all that she does. As founder of Studioilse, together with her multi-disciplinary, London-based team, she brings her philosophy to life. This means creating environments where humans feel comfortable; public spaces that make people feel at home and homes that are habitable and make sense for the people who live in them. Studioilse has completed over a hundred projects including commercial, hospitality, retail, residential and social projects that span the globe, and their projects have become benchmarks in their field, including Soho House New York, the first Aesop store in London and Ett Hem hotel in Stockholm.



