

# Wind driven Eagle Eye Information

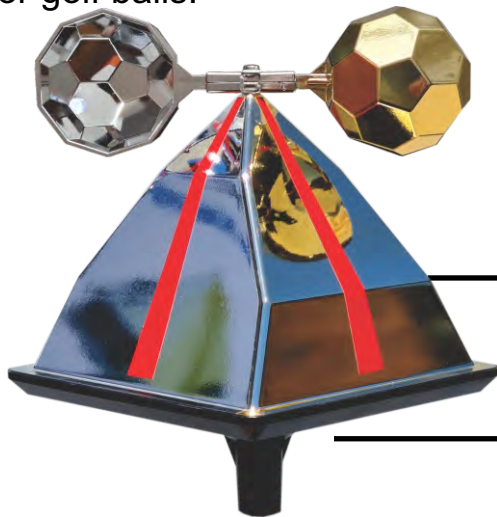


## The Reflector:

Manufactured from durable ABS plastic and coated with a highly reflective coating to reflect light while absorbing very little Ultra Violet.

The reflector has multiple reflecting angles that ensures a greater coverage as well as an irregular flashing pattern.

The design and structure of the reflector is resistant to damage from falling objects like hail or golf balls.



Two wind-sensitive cups to drive the unit in the slightest of breezes.

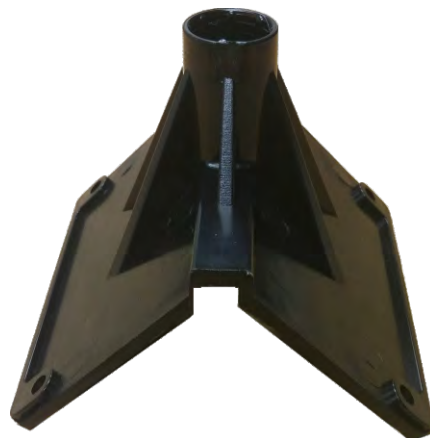
Eagle Eye reflector with various angles. Different colour spectrums depending on the pest bird species.

Sealed double bearing configuration to ensure durability and wind sensitivity.

## Mounting Brackets:

Mounting brackets are manufactured from glass filled nylon and aluminium piping is used to provide years of corrosion free longevity of the installation.

The brackets and piping are designed to accommodate various different installation configurations.



**Maintenance:**

It is of utmost importance to clean and maintain the Eagle Eye unit on a regular basis. Quarterly servicing will be necessary in cities or near the coast, otherwise the unit should be maintained once every 6 months.

The Eagle Eye unit should be polished with a regular non-abrasive car polish and a microfiber cloth.

