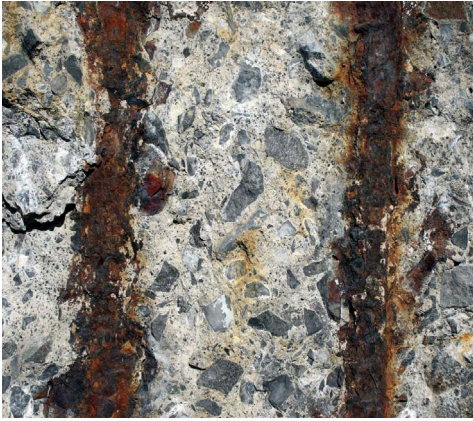


GUARD CLEANER®

RUST



STRIPPER – CLEANER RADICALLY REMOVES TRACES OF RUST

RADICALLY REMOVES TRACES OF RUST, IRON SULPHATE AND COPPER SULPHATE

QUICK AND EASY TO APPLY

WALLS AND FLOORS

INTERIOR AND EXTERIOR

PRODUCT DESCRIPTION

Guard Cleaner® Rust radically removes traces of rust, iron sulphate and copper sulphate.

USE

Guard Cleaner® Rust can be used indoors and out of doors on many substrates such as: tiles, terracotta, natural stone, thermoplastic coatings, etc.

CHEMICAL NATURE

- Contains ammonium bifluoride in solution.

ADVANTAGES AND CHARACTERISTICS

- Nonflammable.
- Easy to use.
- Ready to use.
- Can be used indoors and out.

CONTAINERS

2 litres.

TECHNICAL DATA

Physical state at 20 °C	: Liquid
Colour	: Uncoloured
Odour	: Slight
pH	: 2.5 ± 0.5
Boiling point [°C]	: 100°C
Relative density	: 1.07 ± 0.01
Solubility in water [vol/vol]	: Total
Flashpoint [°C]	: Not applicable
COVs	: < 1 g/l*

HOW TO USE

- Apply neat: do not dilute or mix with other products.
- Shake the product well before use. Test first.
- Wet the substrate before pouring the product onto it.
- **IMPORTANT: Do not apply by spray - risk of accidental contact.**
- Allow to act until stains have disappeared, then rinse off with water. The length of time the product needs to work will be longer or shorter depending on amount of rust to be removed and on the substrate (will work very quickly on very porous substrates, very slowly on a very non-porous stone).
- Rinse the surface copiously with a high-pressure cleaner using cold or hot water for best results.

* Calculation based on the components' data.

APPLICATION TOOLS

- Apply with a brush.



COVERAGE

The following values are for guidance only:

5 to 8 m² / litre

CLEANING YOUR EQUIPMENT

- Tools and equipment should be cleaned with water immediately after use.

STORAGE

- Store in a dry place at a temperature of between 5°C and 30°C.
- Shelf-life: 48 months from date of manufacture, in original unopened can.

RECOMMENDATIONS

- **Guard Cleaner[®] Rust** is a corrosive product. Wear protective gloves, protective clothes and goggles.
- **IMPORTANT: Do not apply by spray - risk of accidental contact.**
- Never apply to glass, paint, aluminium, zinc, glazed surfaces (glazed earthenware), chrome-plated surfaces or damaged enamelled surfaces.
- Do not mix with other substances (bleach in particular, as this would give off toxic chlorine gas).
- Acid: avoid all contact with skin and eyes.
- Do not apply in the rain or in very hot weather. Temperature of air and substrate between 5°C and 30°C.

HEALTH AND SAFETY

- Breathing protection: No breathing protection equipment is required under normal use conditions with suitable ventilation.
- Hand protection: Wear household rubber gloves.
- Skin protection: Wear protective clothing over exposed areas of skin.
- Eye protection: Wear protective goggles.
- In case of ingestion: Do not induce vomiting. Contact a doctor or specialist.

KEEP OUT OF REACH OF CHILDREN

TECHNICAL SUPPORT

GUARD INDUSTRY

7 rue Gutenberg • 93108 MONTREUIL Cedex • FRANCE

Tél: +33 (0)1.55.86.17.60 • Fax: +33 (0)1.48.58.16.89

E-mail : contactus@guardindustry.com

www.guardindustry.com

Important: The content of this documentation is based on our experience with the product. Guard Industry guarantees the quality of its products but expressly disclaims all liability if the user does not follow the recommendations and conditions of use of the products, especially but not exclusively in the case of faulty application, application by untrained personnel, use of products not compatible with Guard Industry products, or adverse weather conditions. For more information, consult the safety data sheet.

For the most recent version of our data sheet, visit our website www.guardindustry.com

Last updated : 06/12/2013