

**iQ parts**  
IQ-PARTS-SHOP.COM



**SPECS &  
INFORMATION**

# MS

## Antivibrante Sgolato Maschio/Maschio

### Sand-Glass Mounting Double Male

Cod.	A	B	M	D	E	Carico max a Compres. Max Compression Load daN	Carico max a Taglio Max Shear Load daN
A2MS12	12	15	04MA	7	10	3	0,8
A2MS25	25	20	06MA	10	18	50	3
A2MS30	30	20	08MA	20	20	60	10
A2MS40	40	30	08MA	19	20	80	6
A2MS40L	40	30	08MA	27	20	100	8

#### Caratteristiche

**Materiale corpo:** Mescola gomma NR/SBR

**Durezza standard:** 60 shore A

**Tolleranza sulla durezza:** +/- 5 SH

**A richiesta:** Differenti lunghezze della vite

**Parte metallica e/o fissaggio:**

Vite e rondella zincate

**Tipo inserto standard:**

Vite pressata sulla rondella

-

Per art. MS e CN misure e durezza producibili su richiesta, rivolgersi all'ufficio commerciale. La quota "E" può essere soggetta a variazioni senza preavviso.

#### Product specification

**Main part material:**

NR/SBR rubber compound

**Standard hardness:** 60 shore A

**Hardness tolerance:** +/- 5 SH

**On request:** Different screw lengths

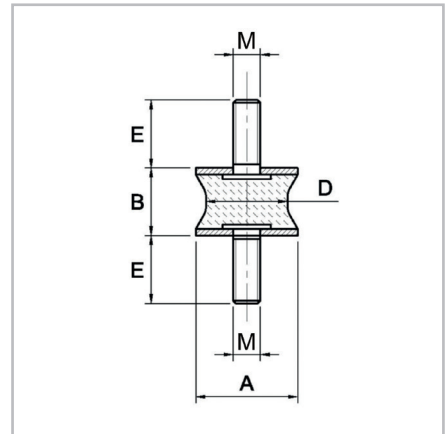
**Metallic part:** Zinc plated screw and washer

**Standard thread:**

Screw pressed on the washer

-

For art. MS and CN other sizes or hardnesses can be produced on demand. For information please contact our sales department. Dimension "E" can vary without notice.





info@iq-parts.nl  
Harsweg 34A  
2461 EZ Ter Aar  
T +31 252 624 126  
The Netherlands