

iQ parts
IQ-PARTS-SHOP.COM



**SPECS &
INFORMATION**

NORMA® First-Aid Repair Clamp

Description

The NORMA® First-Aid Repair Clamp is suitable for the repair of damages on all kinds of pipes, transporting liquid media and non flammable gases up to 115 °C.

Advantages at a glance:

Quick Installation – Minimizes down time for damaged water pipes and pressurized mains

Durable Materials – Corrosion-resistant stainless steel with full circle EPDM rubber gasket

Versatile Fittings – Sophisticated design ensures that each size can securely seal a range of pipe sizes and materials

Economical – Faster and more cost-effective than replacing entire sections of pipe immediately

Certifications: Pressure tested according to DVGW W336 norms, EPDM gasket according to DIN EN 681.1 standard, gasket tested according to European Elastomer specification (former KTW and W270 standard).

Applications:

For repairs of cracks, holes, splits, pin holes etc. in all kinds of steel, cast iron, copper, plastic and concrete pipes.



Industrial plant



Water treatment



Civil engineering

Did you know:

The NORMACONNECT® FGR range is the ideal solution to replace pipe segments permanently with minimum down time and no welding.

www.normagroup.com/corp/en/NORMA-GRIP-GRIP-E/

Installation notice:

CAUTION: The NORMA® First-Aid Repair Clamp is not to be used to connect pipes.

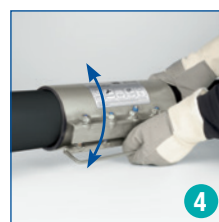
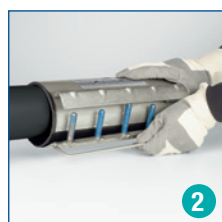
General notes:

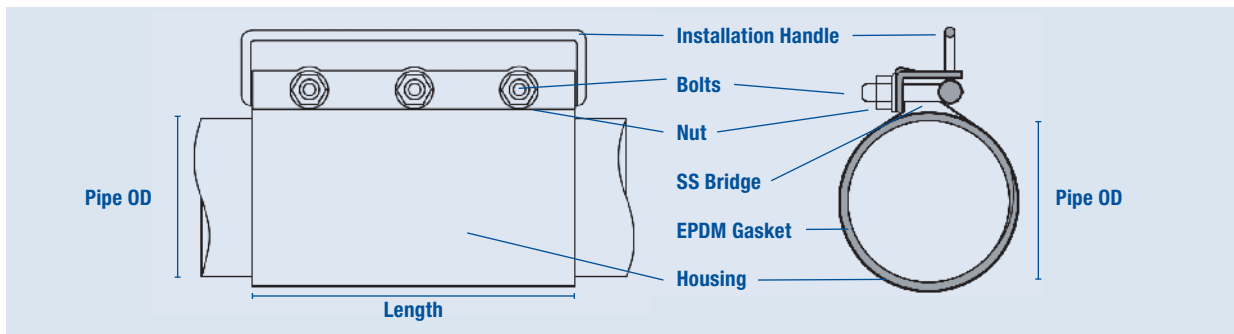
While choosing the length of the clamp, please make sure the clamp overlaps the repair area at least 20 mm on each side.

The NORMA® First-Aid Repair Clamp is only intended to be used for a temporary repair. Maximum angular deflection of damaged pieces 7°.
Always wear safety gloves during installation.

For fast and easy installation, we recommend the use of long wrench sockets.

- Clean the pipe. It should be dry, clean and degreased.
- Remove nuts and washers and place the clamp on the pipe (Picture 1 and 2).
- First tighten the nut on the longest bolt in order to be able to fasten the nuts on the shorter bolts (Picture 3).
- Before tightening the nuts fully, rotate the clamp to evenly adjust the seal. (Picture 4).
To ensure tightness, there should be no wrinkles or waves on the rubber seal.
- Gradually tighten all nuts evenly to a max. torque of 100Nm (M12)/130Nm M(16) (Picture 5).
- Carry out a leakage test by putting the pipe under pressure while it is still accessible.





Designation	Clamping range [mm]	Length [mm]	PN [bar]	Bolt diameter	Max. tightening torque [Nm]	Weight [kg]	Product no.
First-Aid Repair Clamp K-63	59–70	100	16	M12 SW19	100	0.8	0572 2211 063
First-Aid Repair Clamp M-63	59–70	200	16	M12 SW19	100	1.6	0572 2212 063
First-Aid Repair Clamp K-68	63–72	100	16	M12 SW19	100	0.8	0572 2211 068
First-Aid Repair Clamp M-68	63–72	200	16	M12 SW19	100	1.7	0572 2212 068
First-Aid Repair Clamp K-75	70–81	100	16	M12 SW19	100	0.9	0572 2211 075
First-Aid Repair Clamp M-75	70–81	200	16	M12 SW19	100	1.7	0572 2212 075
First-Aid Repair Clamp K-82	82–91	100	16	M12 SW19	100	1.0	0572 2211 082
First-Aid Repair Clamp M-82	82–91	200	16	M12 SW19	100	1.8	0572 2212 082
First-Aid Repair Clamp K-104	104–114	100	16	M12 SW19	100	1.2	0572 2211 104
First-Aid Repair Clamp M-104	104–114	210	16	M12 SW19	100	2.1	0572 2212 104
First-Aid Repair Clamp L-104	104–114	315	16	M12 SW19	100	3.4	0572 2213 104
First-Aid Repair Clamp K-131	128–140	200	16	M16 SW24	130	2.8	0572 2211 131
First-Aid Repair Clamp M-131	128–140	250	16	M16 SW24	130	3.7	0572 2212 131
First-Aid Repair Clamp L-131	128–140	315	16	M16 SW24	130	4.7	0572 2213 131
First-Aid Repair Clamp K-140	138–150	200	16	M16 SW24	130	3.1	0572 2211 140
First-Aid Repair Clamp M-140	138–150	250	16	M16 SW24	130	4.0	0572 2212 140
First-Aid Repair Clamp L-140	138–150	315	16	M16 SW24	130	5.0	0572 2213 140
First-Aid Repair Clamp K-151	150–162	200	16	M16 SW24	130	3.2	0572 2211 151
First-Aid Repair Clamp M-151	150–162	250	16	M16 SW24	130	4.2	0572 2212 151
First-Aid Repair Clamp L-151	150–162	315	16	M16 SW24	130	5.2	0572 2213 151
First-Aid Repair Clamp K-166	163–175	200	16	M16 SW24	130	3.4	0572 2211 166
First-Aid Repair Clamp M-166	163–175	250	16	M16 SW24	130	4.4	0572 2212 166
First-Aid Repair Clamp L-166	163–175	315	16	M16 SW24	130	5.4	0572 2213 166
First-Aid Repair Clamp K-178	178–192	200	16	M16 SW24	130	3.5	0572 2211 178
First-Aid Repair Clamp M-178	178–192	250	16	M16 SW24	130	4.5	0572 2212 178
First-Aid Repair Clamp L-178	178–192	315	16	M16 SW24	130	5.6	0572 2213 178
First-Aid Repair Clamp K-190	191–202	200	10	M16 SW24	130	3.5	0572 2211 190
First-Aid Repair Clamp M-190	191–202	250	10	M16 SW24	130	4.6	0572 2212 190
First-Aid Repair Clamp L-190	191–202	315	10	M16 SW24	130	5.8	0572 2213 190
First-Aid Repair Clamp M-215	215–226	250	10	M16 SW24	130	4.7	0572 2212 215
First-Aid Repair Clamp L-215	215–226	315	10	M16 SW24	130	6.2	0572 2213 215
First-Aid Repair Clamp M-225	220–230	250	10	M16 SW24	130	5.2	0572 2212 225
First-Aid Repair Clamp L-225	220–230	315	10	M16 SW24	130	6.5	0572 2213 225
First-Aid Repair Clamp M-260	251–261	250	10	M16 SW24	130	5.6	0572 2212 260
First-Aid Repair Clamp L-260	251–261	315	10	M16 SW24	130	7.0	0572 2213 260
First-Aid Repair Clamp M-269	269–281	250	10	M16 SW24	130	5.4	0572 2212 269
First-Aid Repair Clamp M-306	306–316	315	10	M16 SW24	130	7.2	0572 2212 306
First-Aid Repair Clamp L-306	306–316	575	10	M16 SW24	130	13.1	0572 2213 306
First-Aid Repair Clamp M-315	314–325	315	10	M16 SW24	130	7.4	0572 2212 315
First-Aid Repair Clamp L-315	314–325	575	10	M16 SW24	130	13.3	0572 2213 315
First-Aid Repair Clamp M-345	345–357	315	10	M16 SW24	130	7.8	0572 2212 345
First-Aid Repair Clamp L-345	345–357	575	10	M16 SW24	130	14.2	0572 2213 345
First-Aid Repair Clamp M-400	396–407	315	10	M16 SW24	130	8.5	0572 2212 400
First-Aid Repair Clamp L-400	396–407	575	10	M16 SW24	130	15.5	0572 2213 400

Material: AISI 304, Material of gasket: EPDM. The maximum tightening torque should not be exceeded. The bolts should be tightened until the leakage is visibly sealed.



info@iq-parts.nl
Harsweg 34A
2461 EZ Ter Aar
T +31 252 624 126
The Netherlands