

iQparts
IQ-PARTS-SHOP.COM



**SPECS &
INFORMATION**



HCL
CLAMPING SOLUTIONS



SMART BAND

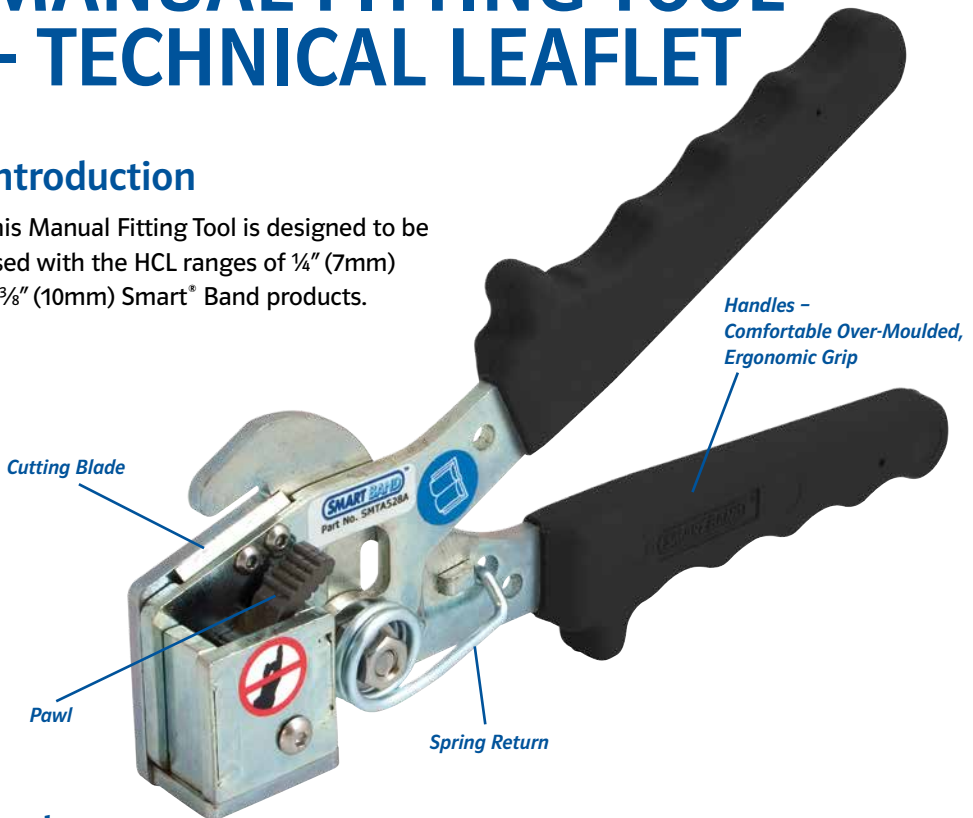
Smart® Band ¼" (7mm) & ⅜" (10mm)
MANUAL FITTING TOOL – TECHNICAL LEAFLET

PART NUMBER: SM-TA-528A

Smart® Band ¼" (7mm) & ⅜" (10mm) MANUAL FITTING TOOL – TECHNICAL LEAFLET

Introduction

This Manual Fitting Tool is designed to be used with the HCL ranges of ¼" (7mm) & ⅜" (10mm) Smart® Band products.



Features

The items marked on the diagram provide the following functions:

Cutting Blade

Allows the Smart® Band to be cut without any additional tooling.

Spring Returns

Returns tool arms to the 'open' position when pressure is released.

Pawl

When handles are squeezed, pawl grips

Smart® Band and pulls it through the buckle until desired tension is achieved.

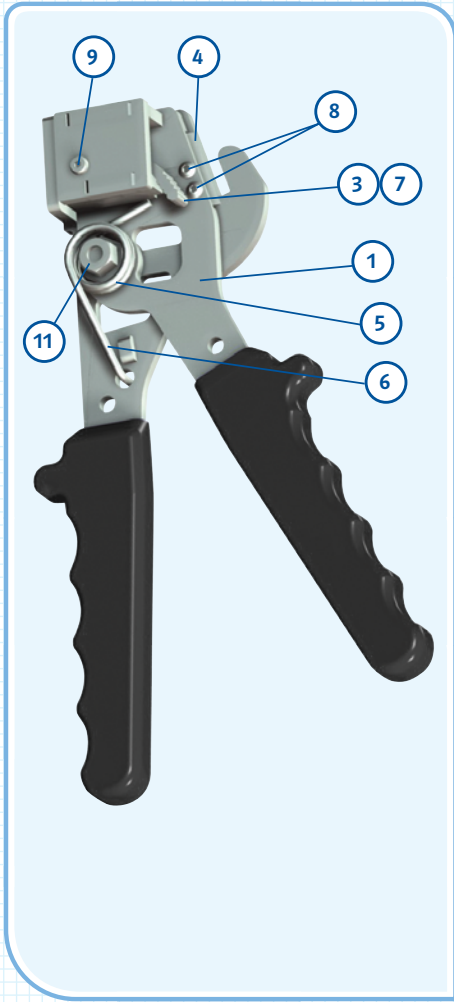
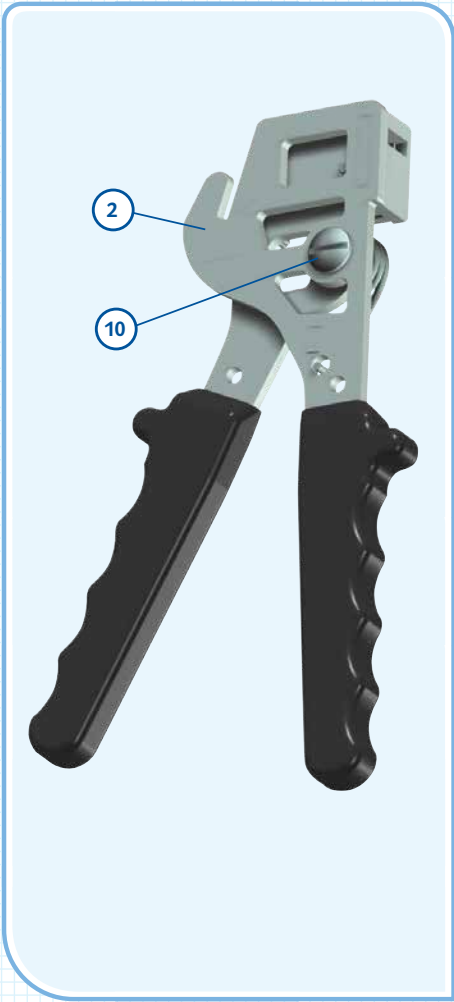
Handles

Ergonomically designed and over-moulded in rubber for increased comfort and grip.

Maintenance

Clean and lubricate the tool regularly to maximise its working life, especially in salt water environments.

Parts List

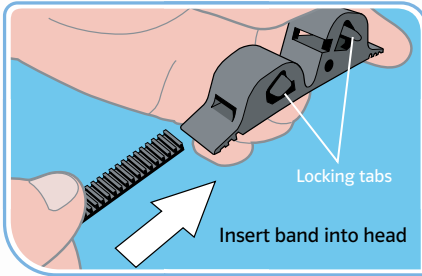


Item	Part Number	Description
1	528B	Moving Handle
2	528C	Fixed Handle
3	528K	Stainless Pawl
4	528D	Blade
5	528N	Hex Bush
6	528P	Handle Return Spring - 12g

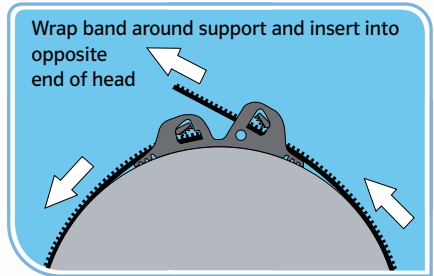
Item	Part Number	Description
7	528R	Pawl Spring - 25g
8	-	M3x3.8 SS Buttonhead Screw
9	-	M4x20 SS Buttonhead Screw
10	-	M6x16 SS Roofing Screw
11	-	M6 Full Nut

Fitting Instructions

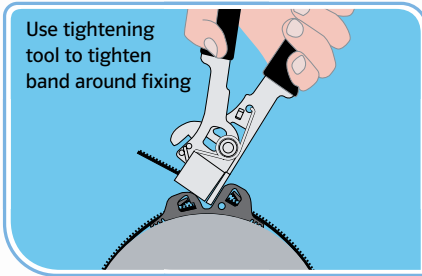
1



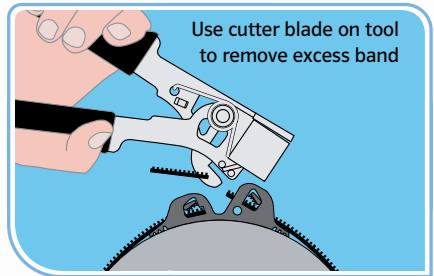
2



3



4



COMPANY WITH
QUALITY SYSTEM
CERTIFIED BY DNV GL
= ISO 9001 =

HCL – UK & Rest of the World

Tel: +44 (0)1761 417714

Fax: +44 (0)1761 417710

Email: sales@hcl-clamping.co.uk

HCL – North America

Tel: 281-717-1145

Fax: 281-717-1146

Email: sales@hcl-clamping.com

Visit www.hclfasteners.com to view our complete range of products.

©2015 HCL Fasteners. All Rights Reserved.



iq
parts
IQ-PARTS-SHOP.COM

info@iq-parts.nl
Harsweg 34A
2461 EZ Ter Aar
T +31 252 624 126
The Netherlands