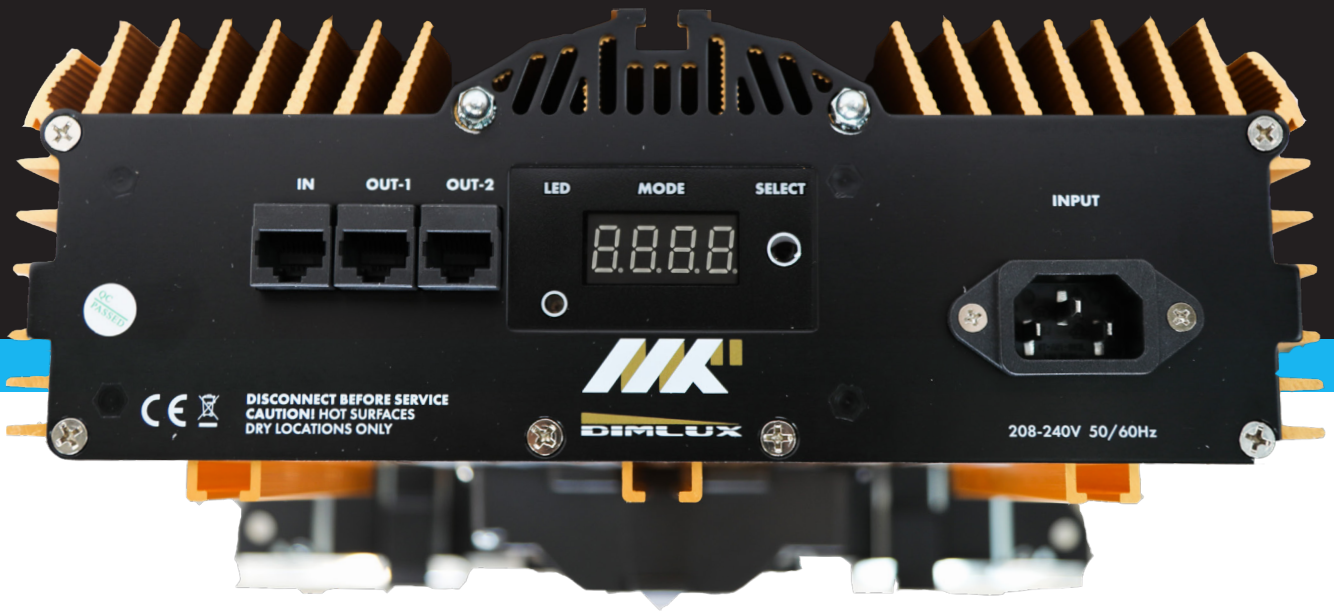


# THE NEW DIMLUX

**EXPERT SERIES 600W MKII**



**EVEN MORE EFFICIENT,  
FUNCTIONAL,  
COMPACT,  
LIGHTER AND SMARTER!**

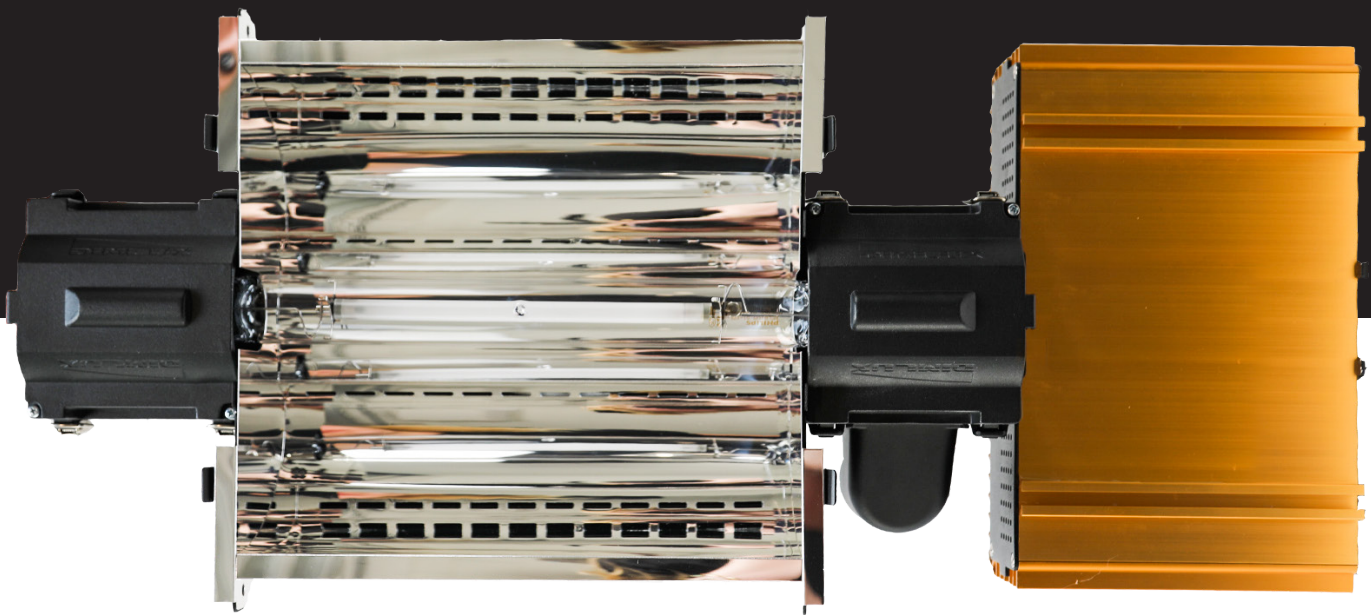
**DIMLUX**



# DIMLUX

## EXPERT SERIES 600W MKII

The MKII upgrade is a more efficient, functional and smarter light fixture. Because the electronics produce less heat loss, the ballast housing is more compact, the ballast is even more efficient, lighter and smarter.



The MKII is equipped with the Ultra Optics Hybrid 98 reflector as standard. This reflector ensures both a deep light penetration into the crop, and for a large overlap with other fixtures for better uniformity. The Hybrid reflector is the ideal reflector for most applications.

The Ultra Optics Hybrid 98 is easily removed, cleaned or replaced with another type of reflector from the Ultra Optics range to achieve the most efficient configuration for your crop.

The old rotary switch has been replaced with a push button that allows the status to be set on the new 4-digit display. The status and error codes are now fully displayed instead of a code.

The Dimlux Expert MKII is equipped with an extra interconnect port (Smartport) that can be used universally.

Another ballast can be connected to it, but also for example a plant temperature camera or humidity sensor.

# DIMLUX

## EXPERT SERIES 600W MKII

### FEATURES

- Unmatched and highly efficient ballast driver: 97% efficient, 30% less losses, 10% more compact and lighter than former Dimlux Expert Series.
- Equipped as standard with the Ultra Optics Hybrid 98 reflector. This reflector has the highest reflector efficiency in the market with 98% total efficiency, achieved through Miro 98 (99.99 silver) and the SBCS (Single Bounce Clear Sight) principle.
- Easily replaceable with the Ultra Optics Wide 98 reflector or Ultra Optics Deep 98 reflector. Both reflectors have a 98% efficiency just like the Ultra Optics Hybrid 98.
- Single push button for setting the power output (in steps of 320, 390, 460, 530, 600, 645, 720W).
- 4-character status display with scrolling text. Status and error codes are fully displayed on this display. Status and error codes are now displayed in full rather than with a cryptic number.
- Closed-ballast design, for better protection of electronics.
- Controllable with current Maxi Controller and ready for future digital controller platform.



### SPECIFICATIONS DIMLUX EXPERT SERIES 600W MKII

Voltage	230V +- 10V
Input power @ 100%	621W
Input current @ 100%	2.7A
Input power @ boost	758W
Input current @ boost	3.27A
Input frequency	50/60Hz
Power factor	0,99
System PPF	1408 $\mu\text{mol/s}$ @ 720W
Ultra-high freq (UHF)	Yes
Controller	Maxi-controller
Dimensions	550 x 275 x 130mm
Weight	6,3 kg
Bulb	Philips Greenpower 600W 400V EL

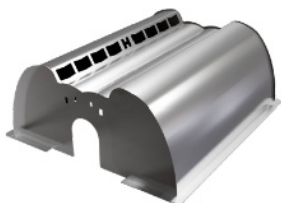
# DIMLUX

## ULTRA OPTICS REFLECTORS



The type of reflector is determined by the type of crop, the canopy, and the length of the plant. Room dimensions, such as floor length to width ratio, perimeter to floor area ratio, ceiling height and paths, also contribute to reflector selection.

Our new range of Ultra Optics Reflectors are easy to remove, clean or replace with another type of Ultra Optics reflector to achieve the most efficient configuration for your crop.



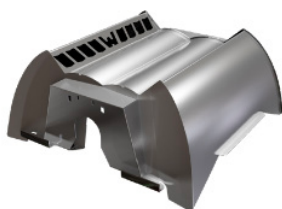
### ULTRA OPTICS HYBRID 98%

The Hybrid reflector provides both deep light penetration into the crop, and a large overlap with other fixtures for better uniformity. The length to width ratio of the light image is 1:1.3 (rectangular). The Hybrid reflector is the ideal reflector for most applications because it combines the advantages of the Wide and Deep reflectors. This reflector can be used with all types of crops.

For a fixture distance of 1.2 by 1.6m (1.92m<sup>2</sup>), the recommended height is 80cm.

### ULTRA OPTICS DEEP 98%

The Deep reflector provides extremely deep light penetration into the crop. Because the Deep reflector radiates downwards instead of sideways, the losses through walls and paths are minimal. The length to width ratio of the light image is 1:1 (square). This reflector can be used with plants that are taller than about 75 cm or have dense foliage (plants further apart or very dense plants). It is also ideal when used in a grow tent, where there are otherwise more losses from reflections through the walls than in a larger space.



### ULTRA OPTICS WIDE 98%

The Wide reflector ensures an extremely wide beam pattern so that only a small distance is required between the crop and the reflector. Thanks to the wider beam angle the distance to the crop with a 1000W fixture is comparable to a regular 600W system. The length/width ratio of the light image is 1:2 (rectangular). The long side of the rectangle is perpendicular to the lamp.

This reflector can be used with crops that are lower than about 75 cm or have an open canopy (more space between the plants or less dense plants). It is also ideal when used in rooms with low ceilings or that have a rectangular cultivation area.

With a fixture distance of 1 by 2m (2m<sup>2</sup>) the advised height is 60cm. The Wide reflector is also ideal for combining HID fixtures with LED fixtures.