

Lifemaxx®



CROSSmaxxx®



LMX®

CATALOGUE V

Lifemaxx: thé supplier for fitness equipment since 2004

It is our passion to provide gyms, personal training studios and CrossFit® boxes in Europe with exquisite, professional and functional fitness equipment built to last. All of the equipment from our extensive range is designed to strike the perfect balance between innovation, design, quality and affordability. Choosing Lifemaxx means getting competitively priced, robust equipment with a stylish design according to the latest fitness trends.

With more than 30 years of experience in the fitness industry, we can provide you with tailor-made equipment advice, up to completely designing and equipping your gym. As a family business, we believe personal contact, excellent service and clear communication are important. Whether you want to set up a home gym or start a professional fitness center, our enthusiastic team is ready to help you!

YOUR LIFE. LIVE IT.

Contents

Free Weights	8 - 19
Dumbbells	8 - 9
Fixed barbells	10
Weight plates	10 - 13
Kettlebells	14 - 15
Bars	16 - 19
Accessories	20 - 33
Cable attachments	21 - 23
Fitness accessories	24 - 27
Training accessories	28 - 29
Essentials	30 - 33
Functional Training & Groupfitness	34 - 79
Bags	52 - 55
Balls	55 - 61
Boxes	62 - 64
Boxing	66 - 68
Elastic bands	69 - 73
Mats	74
Ropes	74 - 75
Sleds	76 - 77
Yoga	78 - 79
Cardio	80 - 83
Racks & Benches	84 - 104
Benches	84 - 87
Platforms	88
Squat racks	89 - 91
Storage racks	92 - 101
Crossmaxx® Storage racks	102 - 104
Pulley	105
Crossmaxx® Rigs	106 - 121
Components	115 - 121
Crossmaxx® Outdoor	122 - 131
Components	128 - 131
Flooring	132 - 137
Rubber flooring	133 - 135
Sprinttracks	136 - 137
Gym Design	138 - 139
Projects	140 - 143
Corporate Social Responsibility	144 - 145
Ordering	146
Need help?	148 - 149



LMX[®]

A smooth look where black is combined with bright, recognizable colours; the LMX[®] brand, although developed by Lifemaxx, stands out with its own identity. LMX[®] offers a wide range of contemporary, fresh looking, high grade equipment. This includes racks, bars, benches, yoga equipment, weights, hip thrust options, accessories and functional fitness equipment. LMX[®] is the ideal brand for personal training, small group training, group lessons and high intensity training.

CROSS *maxx*®

High intensity, high volume, heavy loads - Crossmaxx® has your back. From rigs to floors and from dumbbells to benches, we have all the equipment you can dream of. Specifically designed for high intensity training such as CrossFit and functional fitness, which means it is built to last. A robust and raw look is combined with colours, giving your box/gym a professional look. Even though we are already very proud of the Crossmaxx® equipment, we always strive to improve and innovate so we can deliver the best quality for high-intensity training. Crossmaxx® recently celebrated its tenth anniversary and we are ready to provide you with top level equipment for many more years!



FREE WEIGHTS

Dumbbells | Fixed barbells | Weight plates | Kettlebells | Bars



LMX94.TD Lifemaxx® PU dumbbell tower with LMX72 dumbbellset 1-10kg
Colour: black

Dumbbells



LMX72 Lifemaxx® PU dumbbellset
Polyurethane | Per set | 1 to 10 KG, 1 KG increment
12 to 60 KG, 2 KG increment | 2 year warranty
Compatible with LMX94 Lifemaxx® PU dumbbell tower



LMX75 Dumbbellset
Rubber | Per set | 2 to 10 KG, 1 KG increment
12 to 60 KG, 2 KG increment | 1 year warranty



LMX75C Contoured dumbbellset
Rubber | Per set | 2 to 10 KG, 1 KG increment | 12 to 60 KG, 2 KG increment | Contoured grip | 1 year warranty



LMX81 Crossmaxx® Hexagon dumbbells
Rubber | Per set | 2,5 to 40 KG, 2,5 KG increment
1 year warranty



LMX80 LMX® Chromed dumbbellset
Chromed | Per set | 1 to 10 KG, 1 KG increment
1 year warranty



LMX79 Fixed dumbbellset
Rubber | Per set | 1 to 10 KG, 1 KG increment
12 to 50 KG, 2 KG increment | 1 year warranty



LMX79.TD LMX® Dumbbelltower with fixed dumbbellset 1-10kg
Colour: black

LMX80.TD LMX® Dumbbelltower with chrome dumbbellset 1-10kg
Colour: black

Fixed barbells

LMX74 Lifemaxx® PU EZ & Straight barbells
Polyurethane | 10 to 40 KG, 5 KG increment
2 year warranty



LMX77 Straight barbell
Rubber | 10 to 50 KG, 1 KG increment
1 year warranty



LMX78 EZ barbell
Rubber | 10 to 50 KG, 1 KG increment
1 year warranty

Weight plates Ø30 & Ø50 mm



LMX1134 LMX.® Studio Pump disc (black)
Ø30mm | Rubber | Available in the following weights: 1.25, 2.5, 5, 10 KG | Per piece | 1 year warranty | Also available as full set LMX1127



LMX84 Disc
Ø30mm | Rubber | Available in the following weights: 0.5, 1, 1.25, 1.5, 2, 2.5, 3, 4, 5 KG | Per piece | 1 year warranty



LMX1135 LMX.® Studio Pump disc (coloured)
Ø30mm | Rubber | Available in the following weights: 1.25, 2.5, 5 KG | Per piece | 1 year warranty | Also available as full set LMX1128



LMX87.025 Crossmaxx® Technique plate
Ø50mm | PVC | Available in 2,5 KG | Per piece
Plate Ø 450mm | 1 year warranty

Weight plates Ø50mm



LMX92 Olympic disc 5-grip model
Ø50mm | Rubber | Available in the following weights: 1.25, 2.5, 5, 10, 15, 20, 25 KG | Stainless steel inserts | Per piece
1 year warranty



LMX73 Lifemaxx® PU Olympic discs
Ø50mm | Polyurethane | Available in the following weights: 1.25, 2.5, 5, 10, 15, 20, 25 KG | Stainless steel inserts
Per piece | 2 year warranty



LMX99 Crossmaxx® Calibrated plate
Ø50mm | Polyurethane | Available in the following weights: 0.5, 1, 1.5, 2, 2.5, 5, 10, 15, 20, 25 KG | Per piece | 2 year warranty



Weight plates Ø50mm



LMX85 Crossmaxx® Competition bumper plate (black)

Ø50mm | Rubber | Available in the following weights: 5, 10, 15, 20, 25 KG | Steel inserts | Per piece | 1 year warranty



LMX87 Crossmaxx® Bumper plate

Ø50mm | Rubber | Available in the following weights: 5, 10, 15, 20, 25 KG | Stainless steel inserts | Per piece | 1 year warranty



LMX98 Crossmaxx® bumper plate (coloured)

Ø50mm | Rubber | Available in the following weights: 5, 10, 15, 20, 25 KG | Stainless steel inserts | Per piece | 1 year warranty



LMX97 Hi-Temp bumper plate

Ø50mm | Rubber | Available in the following weights: 5, 10, 15, 20 KG | Stainless steel inserts | Per piece | 1 year warranty



LMX85C Crossmaxx® Competition bumper plate (coloured)

Ø50mm | Rubber | Available in the following weights: 10, 15, 20, 25 KG | Steel inserts | Per piece | 1 year warranty



LMX95 Crossmaxx® ELITE fractional plate

Ø50mm | Polyurethane | Available in the following weights: 0.5, 1, 1.5, 2, 2.5, 5 KG | Per piece | 2 year warranty



LMX96 Crossmaxx® Hollow Technique plate

Ø50mm | HDPE | Available in the following weights: 2.5, 5 KG | Per piece | 1 year warranty



Kettlebells



LMX65 LMX® CPU kettlebell

CPU | Available in the following weights: 8, 12, 16, 20, 24 KG | Per piece | 2 year warranty



LMX88 Crossmaxx® Competition kettlebell

Steel (4 KG Aluminium) | Available in the following weights: 4, 8, 10, 12, 16, 20, 24, 28, 32, 36, 40, 44, 48 KG | Handle Ø33mm | Per piece | 1 year warranty



LMX89 Rubber kettlebell

Rubber | Available in the following weights: 4, 8, 12, 16, 20 KG | Per piece | 1 year warranty



LMX90 Cast iron kettlebell

Iron | With rubber foot | Available in the following weights: 4, 6, 8, 12, 16, 20, 24 KG | Per piece | 1 year warranty



LMX93 Crossmaxx® Powdercoated kettlebell

Iron | Available in the following weights: 4, 8, 12, 16, 20, 24, 28, 32, 36, 40 KG | Per piece | 1 year warranty





Bars



LMX29 Crossmaxx® Powerlifting bar (IPF spec)

Length: 2200mm | Handle Ø29mm | Sleeve Ø50mm
 Weight: 20 KG | Maximum load: 2000 LB | Spring steel
 Bearing type: Needle | Bearing type: bronze bushing
 Hard chrome sleeve and hard chrome shaft | PSI: 230000
 Tolerance from +0,1% to -0,05% | IPF knurl marks



LMX30 Crossmaxx® WL competition men bar (IWF spec)

Length: 2200mm | Handle Ø28mm | Sleeve Ø50mm
 Weight: 20 KG | Maximum load: 2000 LB | Spring steel
 Bearing type: 4 needle & 4 ball bearings | Hard chrome sleeve and hard chrome shaft | PSI: 200000 | Tolerance from +0,1% to -0,05% | IWF knurl marks



LMX38 Crossmaxx® WL competition women bar (IWF spec)

Length: 2010mm | Handle Ø25mm | Sleeve Ø50mm
 Weight: 15 KG | Maximum load: 1200 LB | Spring steel
 Bearing type: 4 needle & 4 ball bearings | Hard chrome sleeve and hard chrome shaft | PSI: 200000 | Tolerance from +0,1% to -0,05% | IWF knurl marks



LMX31.01 LMX® Olympic bar

Length: 2200mm | Handle Ø30mm | Sleeve Ø50mm x
 Weight: 20 KG | Maximum load: 1000 LB | Bearing type: Hard copper bushing | Chrome sleeve and chrome shaft



LMX33 LMX® Olympic EZ bar 120cm

Length: 1200mm | Handle Ø25mm | Sleeve Ø50mm
 Weight: 8,6 KG | Maximum load: 1000 LB | Bearing type: Needle | Chrome sleeve and chrome shaft

LMX35 LMX® Multi purpose bar 90cm

Length: 860mm | Handle Ø25mm | Sleeve Ø50mm
 Weight: 9,6 KG | Maximum load: 1000 LB | Bearing type: Needle | Chrome sleeve and chrome shaft



LMX34 Crossmaxx® Olympic competition bar (black/chrome)

Length: 2200mm | Handle Ø28mm | Sleeve Ø50mm | Weight: 20 KG | Maximum load: 2000 LB | Spring steel | Bearing type: 4 needle & 4 ball bearings | Black shaft and hard chrome sleeve | PSI: 200000 | Tolerance from +1% to -1% | IWF & IPF knurl marks



LMX44 Crossmaxx® Olympic competition women's bar (black/chrome)

Length: 2010mm | Handle Ø25mm | Sleeve Ø50mm | Weight: 15 KG | Maximum load: 1200 LB | Spring steel | Bearing type: 4 needle & 4 ball bearings | Black shaft and hard chrome sleeve | PSI: 200000 | Tolerance from +1% to -1% | IWF & IPF knurl marks



LMX32.04 Crossmaxx® Olympic Junior bar 50mm (black/chrome)

Length: 1700mm | Handle Ø25mm | Sleeve Ø50mm | Weight: 10 KG | Maximum load: 1200 LB | Spring steel | Bearing type: 4 needle & 4 ball bearings | Black shaft and hard chrome sleeve | PSI: 190000 | Tolerance from +1% to -1% | IWF & IPF knurl marks



LMX32 LMX® Olympic bar 150cm

Length: 1500mm | Handle Ø30mm | Sleeve Ø50mm | Weight: 13 KG | Maximum load: 1000 LB | Bearing type: Needle | Chrome sleeve and chrome shaft



LMX36 LMX® Olympic curled V-bar 120cm

Length: 1200mm | Handle Ø25mm | Sleeve Ø50mm | Weight: 9,2 KG | Maximum load: 1000 LB | Bearing type: Needle | Chrome sleeve and chrome shaft



Bars



LMX37 LMX.® Olympic hex bar

Length: 1500mm | Handle Ø25mm | Sleeve Ø50mm
Weight: 21 KG | Maximum load: 1000 LB | Chrome sleeve and chrome shaft



LMX41 LMX.® Olympic safety squat bar

Length: 2200mm | Handle Ø30mm | Sleeve Ø50mm
Weight: 20 KG | Maximum load: 1000 LB | Chrome sleeve and chrome shaft



LMX39.2 LMX.® Olympic Swiss bar PRO

Length: 2200mm | Handle Ø30mm | Sleeve Ø50mm
Weight: 26 KG | Maximum load: 1000 LB | Chrome sleeve and chrome shaft



LMX39.1 Crossmaxx® Strongman Log bar

Weight: 45 KG | 4 handles | Colour: black



LMX39 Crossmaxx® Farmer's walk set

Handle Ø30mm | Sleeve Ø50mm | Weight: 20 KG, per piece
Maximum load per handle: 300 KG | Colour: black



LMX40 Crossmaxx® Axle bar

Length: 2200mm | Handle Ø50mm | Sleeve Ø50mm
Weight: 20 KG | Maximum load: 675 KG | Colour: black



LMX37.PRO Crossmaxx® Open trap bar PRO

Length: 2140mm | Sleeve Ø50mm | Weight: 24 KG
Maximum load: 1000 LB | Chrome sleeve



ACCESSORIES

Cable attachments | Fitness accessories | Training accessories | Essentials



Cable attachments



LMX120 LMX.® Black Series Lat bar
Length: 1200mm | Handle Ø28mm



LMX121 LMX.® Black Series Tricep straight bar
Length: 510mm | Handle Ø28mm



LMX122 LMX.® Black Series Pro lat bar
Length: 680mm | Handle Ø28mm



LMX123 LMX.® Black Series Rowing handle
Length grip (innersize): 110mm | Handle Ø28mm



LMX124 LMX.® Black Series Tricep V-bar
Length: 330mm | Handle Ø28mm



LMX125 LMX.® Black Series Tricep V-bar rotating
Length: 510mm | Handle Ø28mm



LMX126 LMX.® Black Series Multi purpose bar
Distance between grips: 320mm | Handle Ø28mm



LMX128 LMX.® Black Series Cable handle
Length grip: 130mm | Handle Ø28mm

Cable attachments



LMX25 LMX.® Ankle strap
Adjustable



LMX25.01 Leather ankle strap
Adjustable | Material: Leather



LMX12 Tricep V-bar rotating
Length: 440mm | PU grip



LMX16 Rowing handle (large)
Distance between handles: 370mm | PU grip



LMX14 Cable handle
Grip size: 130mm | PU grip



LMX127 PVC Cable handle
Grip size: 140mm | Handle Ø30-35mm | Material: PVC



LMX15.PROV2 Strap handle PRO V2
Grip size: 130mm | Maximum load: 40 KG



LMX17 Tricep V-bar
Length: 350mm | PU grip



LMX13 Rowing handle
Distance between handles: 175mm | PU grip



LMX08 Tricep single rope
Length: 370mm



LMX01 Lat bar
Length: 950mm | PU grip



LMX03 EZ biceps/triceps bar
Length: 750mm | PU grip



LMX05 Triceps straight bar
Length: 500mm | PU grip



LMX07 Pro angled lat bar
Length: 930mm | Handle size: 140mm | PU grip



LMX09 Tricep rope
Length: 700mm



LMX02 Lat bar (large)
Length: 1200mm | PU grip



LMX04 Angled biceps/triceps bar
Length: 650mm | PU grip



LMX06 Pro lat bar
Length: 670mm | Handle size: 140mm | PU grip



LMX10 Multi purpose handle
Distance between handles: 380mm | PU grip



LMX09 Tricep rope XL
Length: 1000mm

Fitness accessories



LMX22 LMX.® Multi purpose strap set
Material: Nylon | Per set



LMX24 LMX.® Neck support roll
Length: 400mm | Velcro closing



LMX24.2 LMX.® Squat Sponge
Length: 440mm



LMX23 Forearm trainer
Compatible with 30mm discs | Excl. 30mm disc



LMX24.1 Neck support roll (rubber)
Length: 500mm | Ø80mm



LMX67.20 Footroll
Dimensions: L: 200mm x W: 100mm | Inner Ø25mm



LMX27/LMX28 Rubber grip
Per meter | Available inner diameters: Ø25mm, Ø30mm



LMX26 Rubber grip
Ø25mm | Closed end | Available lengths: 150mm, 200mm, 250mm, 450mm



Magnetic weight stack pin
LMX59.A Pin Ø8mm | Length pin: 82mm
LMX60.A Pin Ø10mm | Length pin: 110mm



Magnetic weight stack pin with coil leash
LMX59 Pin Ø8mm | Length pin: 82mm
LMX60 Pin Ø10mm | Length pin: 110mm



LMX56 Cable fixer
With eye



LMX57.LOCK LMX.® Snaphook with lock
Length: 90mm | Set of 10pcs with locking mechanism



LMX57 Snaphook
Length 90mm



Cable
LMX55 Per meter | 4 x 5,5mm | 7x19
LMX55.100 100 meter bundle | 4 x 5,5mm | 7x19
LMX55.250 250 meter bundle | 4 x 5,5mm | 7x19





Fitness accessories



LMX50.01 LMX® Studio Pump collarset
Ø30mm | Per set



LMX50 Spring collar **LMX51 Olympic spring collar**
Ø30mm | Per set Ø50mm | Per set



LMX66 LMX® Number sticker set
Complete set of 108pcs



LMX1018 Crossmaxx® Barbell Jack
Colour: black



LMX53 Fast lock collar
Ø50mm | Per set



LMX54 Crossmaxx® Aluminum PRO collar
Ø50mm | Per set



LMX63 Pulley double bearing (dia. 125mm)
LMX64 Pulley (dia. 108mm)



Power chain set **LMX68.08** 8 KG per chain
Per set | Including collars **LMX68.12** 12 KG per chain
 LMX68.16 16 KG per chain

Training accessories



LMX1810 Crossmaxx® Weightlifting belt premium
Leather | Colour: black | Available sizes: S, M, L, XL



LMX1811 Crossmaxx® Powerlifting belt
Leather | Colour: black | Available sizes: S, M, L, XL, XXL



LMX1812 Crossmaxx® Nylon lifting belt
Nylon | Colour: black/grey | Available sizes: S, M, L, XL



LMX70 Crossmaxx® Dip belt
Colour: black



LMX1822 Crossmaxx® Cannonball grip
Per set | Colour: black



LMX71 Head harness
Colour: black



LMX1823 Crossmaxx® Harness PRO
Colour: black | With straps



LMX1825 Crossmaxx® Belt squat belt
Colour: black



LMX1815 Crossmaxx® Lifting straps
Per set



LMX1818 Crossmaxx® Wrist wrap set
Per set



LMX1819 Crossmaxx® Wrist STRAP set
Per set



LMX1820 LMX.® Hanging ab strap
Per set | Colour: black



LMX1834 Crossmaxx® Flexible barbell brush - Steel
Steel brush | Suitable for hard chrome coatings only



LMX1824 Crossmaxx® Pulley system



LMX1805 Gym Chalk (Magnesium)
8pcs per box



LMX1807 Liquid chalk
200ml



LMX1830 Crossmaxx® Multi-purpose Oil - 110ml



LMX1831 Crossmaxx® Barbell brush Nylon brush
Suitable for all coatings



LMX1835 Crossmaxx® Flexible barbell brush - Nylon
Nylon brush | Suitable for all coatings

Essentials



LMX2215 Lifemaxx® Banner
L: 300 x H: 160cm | Vinyl | Grommets every 50 cm



LMX2216 Crossmaxx® Banner
L: 300 x H: 160cm | Vinyl | Grommets every 50 cm



LMX2217 Lifemaxx® Yoga banner
L: 300 x H: 160cm | Vinyl | Grommets every 50 cm



LMX2207 LMX.® Wristband
Colour: black



Sweatband
LMX1816.C Crossmaxx® L: 150mm x W: 75mm | Colour: black
LMX1816.L Lifemaxx® L: 75mm x W: 75mm | Colour: black



LMX2206 Crossmaxx® Coasters
6 pcs per set



LMX2208.BLACK LMX.® Baseball cap (black)
One size fits most



LMX2208.GREY LMX.® Baseball cap (grey)
One size fits most



LMX1833 Crossmaxx® Keychain
Available in black, green, yellow, blue and red



LMX2209.BLACK Crossmaxx® Snapback (black)
One size fits most



LMX2209.GREY Crossmaxx® Snapback (grey)
One size fits most



LMX1554 LMX.® Boxing keychain

Essentials



LMX2210.1 Crossmaxx® Shaker Bottle - Green
0,7 Liter | Colour: green



LMX2210.2 Crossmaxx® Shaker Bottle - Black
0,7 Liter | Colour: black



LMX2211.1 LMX® Shaker Bottle - Black
0,7 Liter | Colour: black



LMX2229 Crossmaxx® Towel 50x100cm
Colour: white | L: 1000mm x W: 500mm



LMX2230 Crossmaxx® Round Mini Towel dia. 50cm
Colour: white | Dia: 500mm



LMX2205 Crossmaxx® THE TANK water bottle
2 Liter | Colour: green



LMX1852 Crossmaxx® Tactical Backpack 45L - black
Size: 45 L | Colour: black



FUNCTIONAL TRAINING & GROUPTFITNESS

Bags | Balls | Boxes | Boxing | Elastic bands | Mats | Ropes | Sleds | Yoga



LMX1134 LMX.® Studio Pump disc (black)
Rubber | Ø30mm | Available in the following weights: 1.25, 2.5, 5, 10 KG | Per piece | 1 year warranty
Also available as full set LMX1127



LMX50.01 LMX.® Studio Pump collarset
Ø30mm | Per set



LMX1128 LMX.® Studio Pump set COLOUR
This set contains a LMX. Studio Pump bar, coloured weights (2x 1.25 KG, 2x 2.5 KG, 2x 5 KG) & collars



LMX1127 LMX.® Studio Pump set BLACK
This set contains a LMX. Studio Pump bar, black coloured weights (2x 1.25 KG, 2x 2.5 KG, 2x 5 KG) & collars



LMX1135 LMX.® Studio Pump disc (coloured)
Ø30mm | Rubber | Available in the following weights: 1.25, 2.5, 5 KG | Per piece | 1 year warranty
Also available as full set LMX1128



LMX1133 LMX.® Studio Pump neck support roll
Length: 200mm | Velcro closing



LMX1150 LMX.® Vinyl dumbbellset
Per set | Available in the following weights: 0.5, 1, 1.5, 2, 3, 4, 5 KG



LMX1131 LMX.® Studio Pump bar
Ø30mm | Weight: 2 KG | Length 1400mm



LMX1130 LMX.® Chromed Pump bar 30mm 1400mm
Ø30mm | Weight: 2kg | Length 1400mm



LMX1110 Adjustable ankle/wrist weight set PRO
Velcro closing | adjustable weight | 2 x 1,25 KG



LMX1124 LMX.® Adjustable Step Deck
 Anti-slip surface | two adjustable height levels: 200 and 350mm three adjustable positions for backrest
 Dimensions: L: 1100 mm x W: 350mm | Max user weight: 110 KG



LMX1123 LMX.® Step
 Anti-slip surface | three adjustable height levels: 100, 150 and 200mm | Dimensions: L: 1050 mm x W: 440mm
 Max user weight: 130 KG

Functional Training & Groupfitness



LMX1122 LMX.® PRO step (3-level)
 Anti-slip surface | three adjustable height levels: 150, 200 and 250mm | Dimensions: L: 900 mm x W: 350mm
 Max user weight: 300 KG



LMX1271 Agility hurdle set
 Set contains 4 hurdles | Twist hurdle to adjust height from 170mm to 300mm | Colour: green



SP1122C Clip for LMX1122 step
 Replacement clip for LMX1122 PRO step (3-level)



LMX1270 LMX.® Speed ladder
 Length: 4,5m



LMX1277.1 Rubber roll-out ladder
 Dimensions: L: 4500mm x W: 400mm x H: 3mm | Material: rubber



LMX[®]





Functional Training & Groupfitness



LMX1269 Crossmaxx® Mini timer

Clock display 12 hour / 24 hour | Count up (0:00 to 99:59) can be customised | Count down (0:00 to 99:59) can be customised | Custom programmable intervals | Loud beep
Remote and app controlled | Dimensions: L: 156mm x W: 24mm x H: 52mm



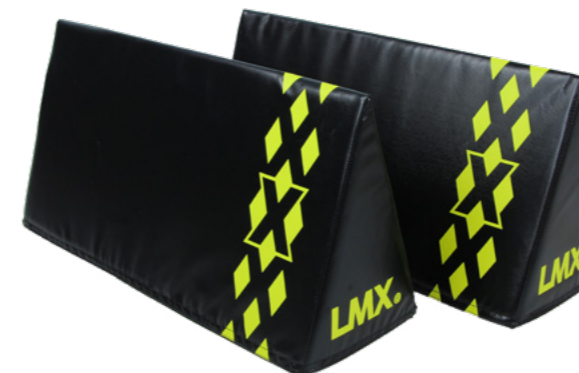
LMX1282 Crossmaxx® 4 digit timer

Clock display 12 hour / 24 hour | Count up (0:00 to 99:59) can be customised | Count down (0:00 to 99:59) can be customised | Custom programmable intervals | Loud beep
Remote controlled



LMX1283 Crossmaxx® 6 digit timer

Clock display 12 hour / 24 hour | Count up (0:00 to 99:59) can be customised | Count down (0:00 to 99:59) - can be customised | Custom programmable intervals | Interval rounds shown | Loud beep | Remote and app controlled



LMX1273 LMX.® Soft Hurdle set (2pcs)

Set contains 2 hurdles | Dimensions: L: 600mm x W: 200mm x H: 310mm | Material: high-density foam with PVC cover



LMX1261 LMX.® Speed cone set

Height: 230mm | Set of 4 pieces | Colour: yellow



LMX1275 LMX.® Cones, 20 pcs with rack

20 cones per set | With rack for easy storage | Colour: yellow



LMX1284.1 Crossmaxx® Remote for timer type: GX-IR03



LMX1284.2 Crossmaxx® Remote for timer type: GX-IR05



LMX1284.3 Crossmaxx® Remote for timer type: CT03

Functional Training & Groupfitness



LMX1401 LMX.® Ab wheel



LMX1409 Crossmaxx® Squat wedge
Dimensions: L: 700mm x W: 160mm x H: 50mm
Colour: black



LMX1408 Crossmaxx® GHR Glute Ham Roller
Colour: black



LMX1405 LMX.® Equalizer set
Height: 700mm | Colour: black



LMX1506 LMX.® Suspension Trainer PRO
Contains: 2 ergonomic handles, 1 anchor line
2 adjustable base lines, 1 travel bag



LMX1507 LMX.® X-mount
Wall or ceiling mount for all suspension training systems



LMX1455 Crossmaxx® Macebell
Iron | Available in the following weights: 4, 6, 8, 10 KG |
Handle Ø between 32 and 40mm | Length between
102 - 106cm | Width between 9 - 18cm | Per piece



LMX1503 Crossmaxx® Wooden training ring set
Set contains: 2 wooden rings (1,11"), 2 high quality adjustable
straps with marking



LMX1504 Crossmaxx® Strap set for training rings (2x16ft)
Set contains 2 adjustable straps with marking | Length: 4,88m



LMX1501.R PT4Pro training ring set (black)
Add-on for the PT4Pro® suspension trainer



LMX1502 LMX.® Training ring set
Set contains: 2 ABS rings, 2 high quality adjustable straps
with marking



LMX1505 Crossmaxx® Competition ring straps (set)
Set contains 2 straps with marking | Length: 250cm per piece



LMX1501.P PT4Pro rotation pulley (black)
Add-on for the PT4Pro® suspension trainer | Without handles



LMX1501 PT4Pro suspension trainer kit
This kit contains: 2 ergonomic handles, 1 anchor line
2 adjustable base lines, 1 travel bag, 1 manual with clear instructions



LMX[®]



Functional Training & Groupfitness



LMX1901.G Crossmaxx® Tactical vest
Can be used with LMX1903 Crossmaxx® Tactical vest plate set | Colour: green



LMX1903 Crossmaxx® Tactical vest plate set
Available in 3 sizes: LMX1903.1 set of 2x 3.75 LB, LMX1903.2 set of 2x 5.75 LB, LMX1903.3 set of 2x 8.75 LB | Suitable for LMX1901.G Crossmaxx® Tactical vest



LMX0605 PRO abroller
Weight: 12 KG | Colour: silver



LMX1906 Crossmaxx® Ab mat PRO
Durable material | Anti-slip bottom | Colour: black



LMX1601 LMX® Balance dome
Height: 220mm | Ø600mm



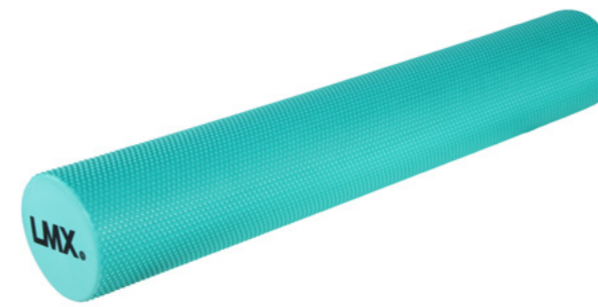
LMX1605 LMX® Air stability disc
Ø330mm | Colour: yellow



LMX1606 LMX® Balance pad
Dimensions: L: 490mm x W: 390mm x H: 55mm
Colour: black



LMX2106 Vicore® Terra Core
Dimensions: L: 1170mm x W: 440mm x H: 260mm
Weight: 13 KG | Colour: black



LMX1610 LMX® EVA foamroller 15x90 cm
Eco friendly EVA foam material | Ø150mm
Length: 900mm | Colour: blue



LMX1611 Crossmaxx® Performance roller
Ø135mm | Length: 330mm | Colour: black



LMX1612 Crossmaxx® Performance roller XL
Ø135mm | Length: 610mm | Colour: black



LMX2107 Terra-Glide®
Dimensions: L: 600mm x W: 380mm x H: 180mm
Weight: 8,6 KG | Colour: black



Functional Training & Groupfitness



LMX1022 LMX.® Total core trainer with handle
Suitable for all Ø50mm bars | With handle
Weight: 27 KG | Colour: black



LMX1019 Crossmaxx® Post landmine
To be used with Ø50mm weight plate | Suitable for all Ø50mm bars | Colour: black



LMX1035 Crossmaxx® Landmine V-handle
Suitable for all Ø50mm bars | Colour: black



LMX1703 Crossmaxx® Parallettes V2
Dimensions: L: 450mm x W: 325mm x H: 165mm
Handle Ø30mm | Per set | Colour: black



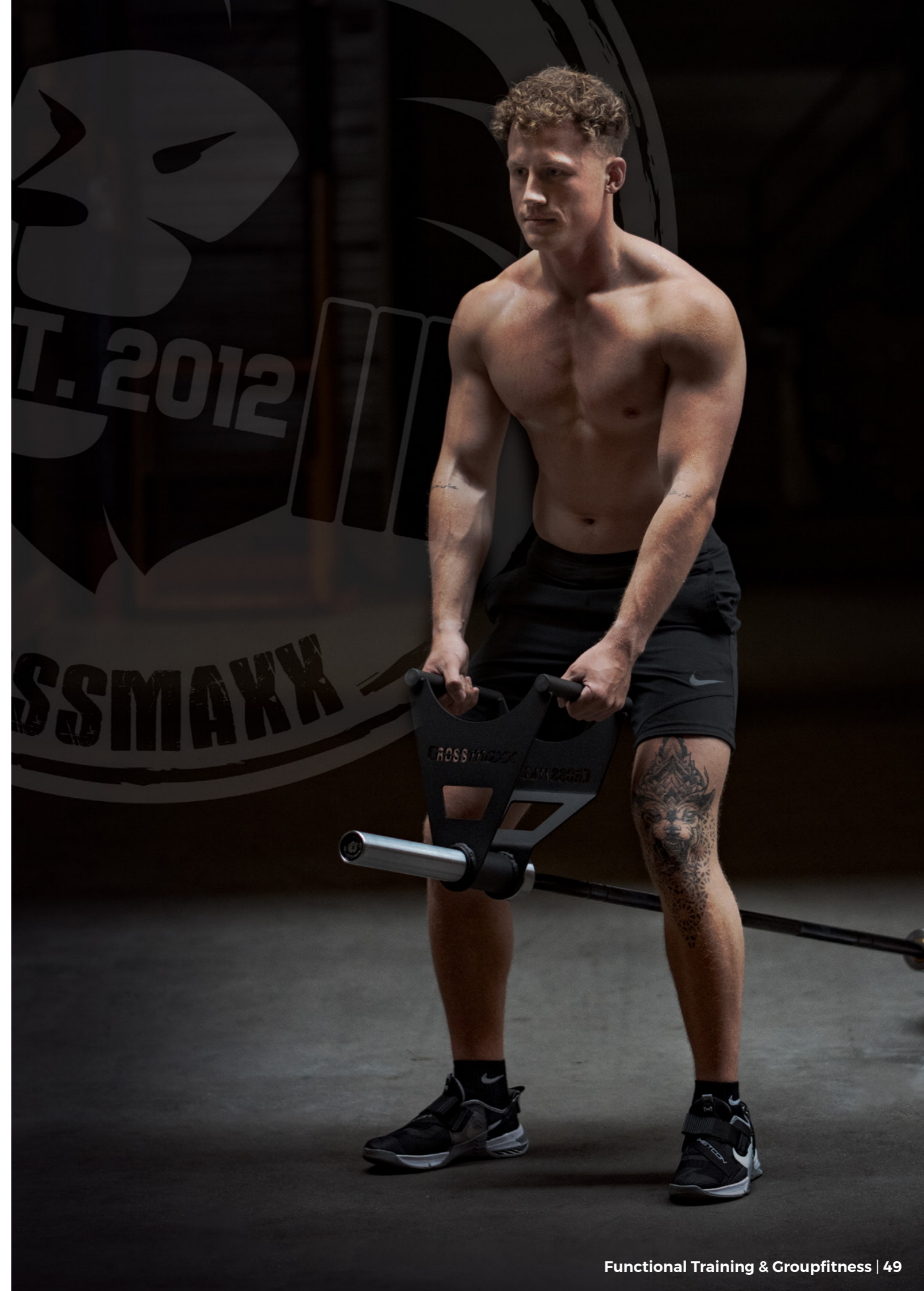
LMX1029 Crossmaxx® Total core trainer handle
Suitable for all Ø50mm bars | Brushed steel finishing



LMX1059 Crossmaxx® Tire Flip
Dimensions: L: 1200mm x W: 1400mm | Weight: 80 KG
Can be loaded up to 120 KG | Can be anchored in floor for more safety | Colour: black



LMX1701 Crossmaxx® Parallettes
Dimensions: L: 580mm x W: 350mm x H: 300mm
Handle Ø30mm | Per set | Colour: black





LMX[®]





Bags



LMX1550 LMX.® Challenge bag

With strong nylon straps | 5 ergonomic grips
Available in 6, 8, 10, 12, 16, 20 KG | Colour: black



Suples® Bulgarian Bag Synthetic Leather

SUPLES01 Size: XS | Weight: 5 KG | Colour: black

SUPLES02 Size: S | Weight: 8 KG | Colour: black

SUPLES03 Size: M | Weight: 12 KG | Colour: black

SUPLES04 Size: L | Weight: 17 KG | Colour: black

SUPLES05 Bulgarian Bag DVD Instructional DVD



LMX1570 LMX.® Aqua bag

Available in size: S (max 23 KG), M (max 28 KG), L (36 KG) | Will be delivered without filling



Bags



LMX1551 Crossmaxx® BigBoy Sandbag

Colour: black | Available in size: XS (max 30 KG), S (max 45 KG), M (max 65 KG), L (max 85 KG), XL (max 115 KG)
Will be delivered without filling



LMX1562 Crossmaxx® rubber granulate 20kg bag
Approx 20kg per bag | Filling for LMX1561 Crossmaxx® Worm



Crossmaxx® Worm

Will be delivered without filling | Colour: black

LMX1561.S 2 person Worm (max 80 KG) | Length 160cm

LMX1561.L 4 person Worm (max 190 KG) | Length 335cm

Balls



LMX1240 LMX.® Slamball

Does not bounce when dropped | Sand filling
Available weight: 6, 8, 10, 12, 16, 20 KG | Colour: black



LMX1240 Slamball

Does not bounce when dropped | Sand filling
Available weight: 35, 50, 70 KG | Colour: black

Balls



LMX1249 LMX.® Wallball premium
Foam & rubber filling | Ø35mm | Anti-slip fabric
Available weights: 4, 6, 9, 12 KG



LMX1260.BAG LMX.® Pilates ball net
For 10 balls



LMX1260 LMX.® Pilates ball
Available sizes and colours: Ø20cm (blue), Ø25cm (yellow)



LMX1243 Crossmaxx® RBBR wallball
High absorption level | Material: rubber | Ø35mm
Available weights: 4, 6, 9, 12 KG



LMX1244 Crossmaxx® PRO wall ball
High absorption level | Rubber filling
2 KG ball Ø250mm | Other weights Ø35mm
Available weights: 2, 4, 6, 8, 9, 10, 12 KG



LMX1614 Crossmaxx® Lacrosse ball
Diameter: Ø64,5mm | Colour: red





LMX[®]





LMX1103 LMX.® Gymball PRO

Tested up to 250 KG | Available in the following sizes: Ø55cm, Ø65cm, Ø75cm | Colour: black



LMX1100 Gyball

Anti burst, tested up to 250 KG | Available in the following sizes: Ø55cm (purple or silver), Ø65cm (orange or silver), Ø75cm (green or silver)



LMX1102 LMX.® Gymball base

Ø50cm | Colour black



LMX1100 LMX.® Gymball holder

Ø300mm

Balls



LMX1250 LMX.® Double handle medicine ball

Textured rubber surface | With ergonomic handles
Available weights: 6, 7, 8, 9, 10 KG



LMX1250 LMX.® Medicine ball

Textured rubber surface | Available weights: 1, 2, 3, 4, 5 KG

Boxes



LMX1262 Crossmaxx® Drop pad set

Dimensions: L: 750mm x W: 570mm x H: 150mm
Per set | Colour: black



LMX1265 LMX.® Hip thrust Box

Dimensions: L: 600mm x W: 550mm x H: 400mm
Colour: black



LMX1296 Crossmaxx® Wooden plyo box (3-level)

Made from thick 20mm plywood | Can be used on all sides
Dimensions: L: 760mm x W: 610mm x H: 510mm



LMX1299 Crossmaxx® Wooden jerk block set

Full set | Set contains: 4 blocks height 15cm, 2 blocks height 30cm, 2 blocks height 38cm | High quality plywood



LMX1297.MULTI Crossmaxx® 3-in-1 Soft plyo box

Can be used on all sides | Dimensions: L: 760mm x W: 610mm x H: 510mm | Colour: black



LMX.® Soft plyo box

Soft anti-slip surface | Boxes can be stacked and secured with Velcro strip | Dimensions: L: 900mm x W: 700mm

LMX1297.15 Height: 150mm

LMX1297.30 Height: 300mm

LMX1297.45 Height: 450mm

LMX1297.60 Height: 600mm





LMX[®]



LMX.® BOXING



LMX1553 LMX.® Boxing gloves PU
PU | Available sizes: 10oz, 12oz, 14oz, 16oz



LMX1564 LMX.® Boxing gloves Leather
Leather | Available sizes: 10oz, 12oz, 14oz, 16oz



LMX1556 LMX.® Boxing bag mitts PU
PU | Available sizes: S/M & L/XL



LMX1557 LMX.® Boxing Focus pads PU
PU | Per set



LMX1808 LMX.® Boxing Deodoriser 100ml spray



LMX1809 LMX.® Boxing Deodoriser 500ml spray

LMX. BOXING



LMX1558 LMX. Boxing Arm pads Leather
Leather | Per set



LMX1559 LMX. Boxing Kickshield XL
PU | Dimensions: L: 750 x W: 450 x H: 150mm



LMX1555 Lifemaxx PRO boxing bag
Length: 180cm | Chains included | Colour: black

Elastic bands



LMX1180 Crossmaxx resistance band
Latex | Available levels: level 1 (red, W: 13.4mm), level 1.5 (black, W: 22.2mm), level 2 (green, W: 28.6mm), level 3 (orange, W: 44.5mm), level 4 (blue, W: 63.5mm), level 5 (purple, W: 82.6mm) Length 1040mm | Thickness: 4.5mm



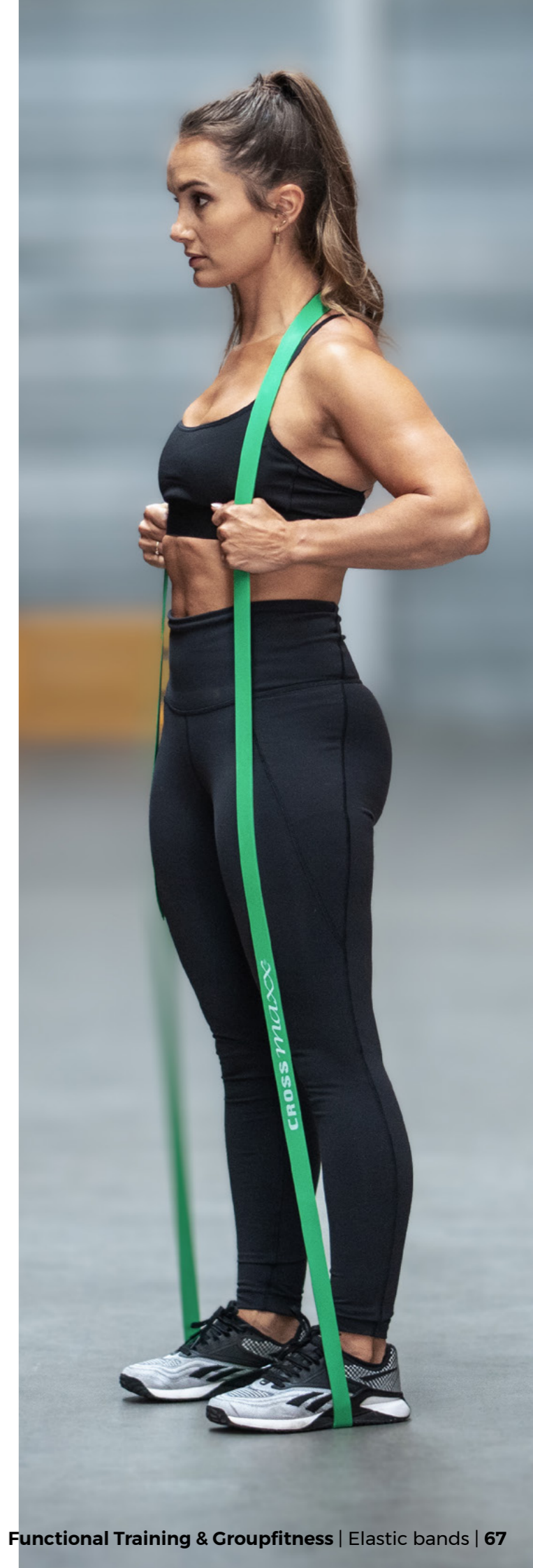
LMX1181 Crossmaxx MINI resistance band
Latex | Available levels: level 1 (red, W: 12.7mm), level 2 (black, W: 22.2mm), level 3 (green, W: 28.5mm), level 4 (orange, W: 44.5mm) | Length 305mm | Thickness: 4.5mm



LMX1181.L Crossmaxx Mini resistance band set LIGHT
Latex | Set of 4 pieces | Contains 2 pcs the following levels: level 1 (red, W: 12.7mm), level 2 (black, W: 22.2mm) | Length 305mm Thickness: 4.5mm



LMX1181.H Crossmaxx Mini resistance band set HEAVY
Latex | Set of 4 pieces | Contains 2 pcs the following levels: level 3 (green, W: 28.5mm), level 4 (orange, W: 44.4mm) Length 305mm | Thickness: 4.5mm





LMX[®]



Elastic bands



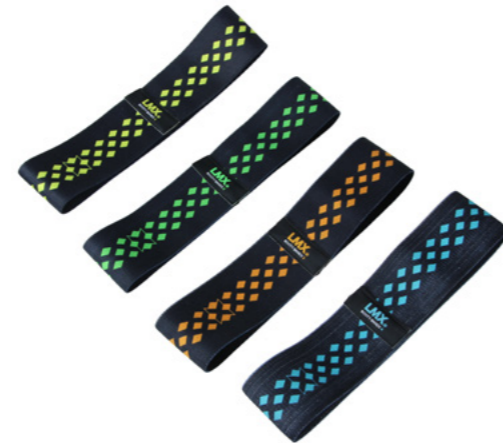
LMX1116 LMX.® Mini band

Pack of 10pcs | Available in the following levels: level 1 (yellow), level 2 (green), level 3 (orange), level 4 (blue)



LMX1117 LMX.® Hip band set

Set of 3pcs contains 3 different levels of resistance; light, medium and heavy



LMX1118 LMX.® Booty band

Per piece | Available in 4 levels: level 1 (yellow), level 2 (green), level 3 (orange), level 4 (blue)



LMX1115 Flex band

Latex | Length: 12m | Available in the following levels: light (yellow), medium (purple), heavy (blue)

LMX1171 LMX.® Power tube

Latex | With canvas protection | Length: 1250mm
Available in 4 resistance levels: level 1 (yellow), level 2 (green), level 3 (orange), level 4 (blue)



LMX1170 Training tube

Latex | With exchangeable canvas protection | Length: 1220mm | Available in 5 resistance levels: level 1 (yellow), level 2 (green), level 3 (orange), level 4 (blue), level 5 (purple)



LMX1272 LMX.® Cobra resistance rope set

Set contains 1x harness, 2x resistance rope 5m, 1x Multi purpose strap, 2x carabiner | Maximum stretch 10m
Colour: black



Mats



LMX.® Aerobic mat

Durable honeycomb structure | Eco friendly material
With eyelets for easy storage

LMX1220

Dimensions: L: 1400mm x W: 600mm x H: 16mm
Colour: black or blue

LMX1221

Dimensions: L: 1800mm x W: 600mm x H: 16mm
Colour: black or blue



LMX1222 LMX.® Pilates/yoga mat

Durable honeycomb structure | With eyelets for easy storage | Dimensions: L: 1800mm x W: 600mm x H: 8mm
Colour: green



LMX1223 LMX.® Studio mat

Dimensions: L: 1200mm x W: 600mm
With eyelets for easy storage Colour: grey



LMX1224 LMX.® Yoga mat PRO

PVC | Dimensions: L: 1800mm x W: 660mm | Thickness 6mm
With eyelets for easy storage | Colour: black

Ropes



LMX1291 Crossmaxx® Speed rope

With bearing | Adjustable length



LMX1291.CABLE Crossmaxx® Speed rope cable PRO

Ø2.4mm | L: 300cm | Colour: red



LMX1293 Crossmaxx® PRO bearing speed rope

With bearing | Adjustable length



LMX1294 LMX.® Speed rope PRO

With bearing | Adjustable length | 2 different ropes with bag | Colour: black



LMX1290 LMX.® Leather jump rope

Length: 270cm | With bearing



LMX1292B Crossmaxx® Functional speed rope

With bearing | Adjustable length | Colour: black

Ropes



Crossmaxx® Battle rope with sleeve

Length: 12m | With canvas cover

LMX1287.1 Ø1,5" (3,7cm)

LMX1287.2 Ø2" (5cm)



LMX1288.1 Crossmaxx® Premium Battle rope 1,5"

Length 12m | Material: Nylon | Colour: black



LMX.® Battle rope

Length: 15m | Material: PP | Colour: black

LMX1285.1 Ø1" (2,5cm)

LMX1285.2 Ø1,5" (3,7cm)

LMX1285.3 Ø2" (5cm)



LMX1289 Crossmaxx® Climbing rope

Length 6m | Material: Sisal



Sleds



LMX1023 Crossmaxx® Power sled
 Dimensions: L: 1100mm x W: 700mm x H: 1080mm
 Sleeve suitable for all Ø50mm weight plates | Weight: 36 KG
 Colour: black



LMX1034 Crossmaxx® Magic sled
 Colour: black



LMX1028 Crossmaxx® Sled compact
 Belt included | Sleeves suitable for all Ø50mm weight plates
 Colour: black



LMX1023.A Crossmaxx® Low bar attachment LMX1023
 Compatible with LMX1023 | Colour: black



LMX1024 Crossmaxx® Prowler sled
 Dimensions: L: 1020mm x W: 940mm x H: 1000mm
 Sleeve suitable for all Ø50mm weight plates | Weight: 27 KG
 Colour: black





LMX1222 LMX.[®] Pilates/yoga mat

Durable honeycomb structure | With eyelets for easy storage
Dimensions: L: 1800mm x W: 600mm x H: 8mm | Colour: green



LMX1228 LMX.[®] Cork yoga block

Cork | Dimensions: L: 225mm x W: 150mm x H: 75mm



LMX1224 LMX.[®] Yoga mat PRO

PVC | Dimensions: L: 1800mm x W: 660mm | Thickness 6mm
With eyelets for easy storage | Colour: black



LMX1229 LMX.[®] Yoga strap

Polyester with steel buckle | L: 1900mm x W: 30mm | Colour: blue





LMX1752 Crossmaxx® Air Rower PRO

Large LCD console with 8 workouts | 8 levels of resistance
Dual steel fan | Anti-slip pedals | Wheels for easy moving
Dimensions: L: 2180mm x W: 615mm x H: 760mm
Weight: 49,5 KG | Max user weight: 160 KG | Warranty frame:
Lifetime, Parts: 1 year, Wear parts: 6 months





LMX1751 Crossmaxx® Runner PRO

Large LCD console with 7 workouts | 4 levels of resistance
 Anti-slip durable rubber slats with robust bearings
 Build-in wireless heart rate receiver | Wheels for easy moving
 Dimensions: L: 1830mm x W: 930mm x H: 1580mm | Weight: 158 KG
 Max user weight: 150 KG | Warranty frame: Lifetime, Running deck: 2 years, Parts: 2 years, Wear parts: 6 months



LMX1750 Crossmaxx® Air Bike PRO

Large LCD console with 8 workouts | Quick seat adjustment
 Dual steel fan | Anti-slip pedals | Wheels for easy moving
 Dimensions: L: 1230mm x W: 750mm x H: 1350mm
 Weight: 71,5 KG | Max user weight: 180 KG

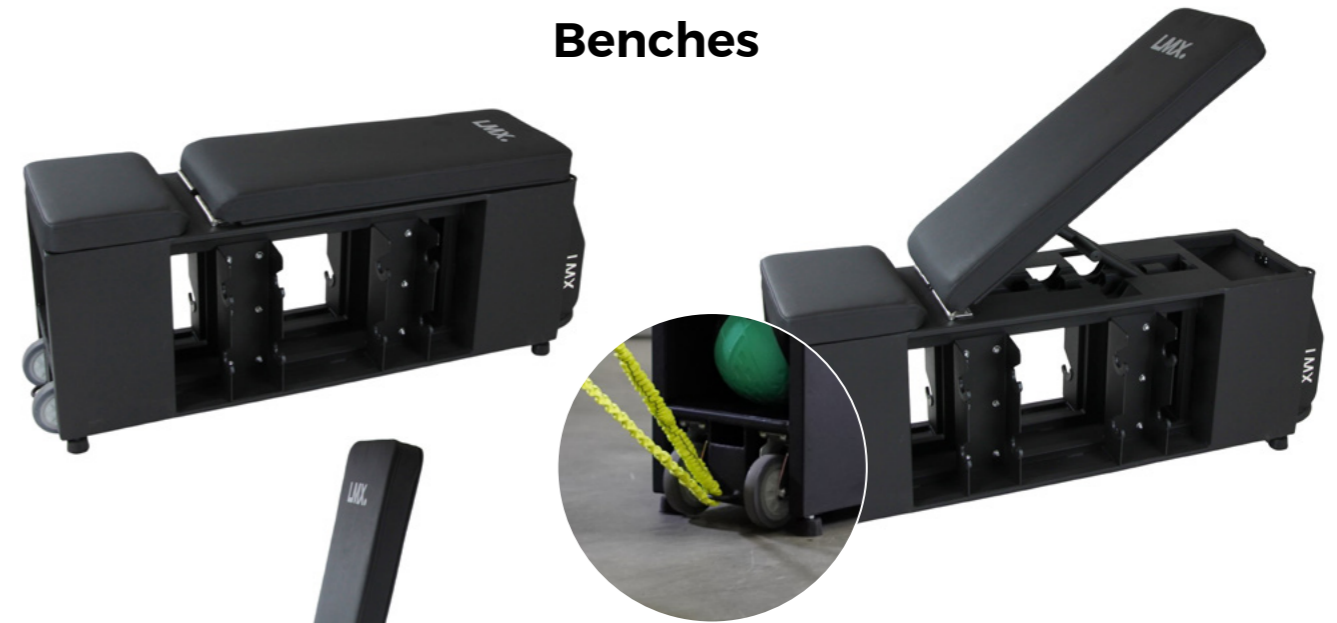


RACKS & BENCHES

Benches | Platforms | Squat racks | Storage racks | Crossmaxx® Storage racks



Benches



LMX1305 LMX.® HIIT Bench

Dimensions: L: 1350mm x W: 350mm x H: 530mm
Weight: 85 KG | Colour: black



LMX1070 LMX.® Hip thrust machine

Dimensions: L: 1800mm x W: 1710mm x H: 890mm | Loadable sleeve length: 395mm per side | Weight: 100 KG | Colour: black

Benches



LMX1055 Crossmaxx® Adjustable bench
Adjustable in 7 positions | Dimensions: L: 1350mm x W: 700mm | Colour: black



LMX1061 LMX.® Flat bench
Dimensions: L: 1220mm x W: 540mm x H: 520mm
Weight: 25 KG | PU cushion | Colour: black



LMX1060 LMX.® Multi purpose bench
Seat adjustable in 3 positions | Back adjustable in 9 positions
Dimensions: L: 1220mm x W: 540mm x H: 520mm
Weight: 40 KG | PU cushion | Colour: black



LMX1743 Crossmaxx® Flat bench
Dimensions: L: 1300mm x W: 350mm x H: 450mm
Colour: black



LMX1057 Crossmaxx® Hip Thrust bench
Dimensions: L: 1560mm x W: 720mm x H: 460mm
With 4 band pegs | Weight: 50 KG | With wheels for easy movement | Colour: black



LMX1699 Crossmaxx® bench hanger for LMX1743
Dimensions: L: 460mm x W: 90mm x H: 135mm
Colour: black



LMX1742 Crossmaxx® Glute Ham Developer PRO
Adjustable in 13 positions | Dimensions: L: 1500mm x W: 970mm x H: 930mm | Weight: 60 KG | With pins for resistance bands (LMX1180) | Colour: black



LMX1707 Crossmaxx® Split squat stand
Dimensions: L: 660mm x W: 660mm x H: 550mm
Length cushion: 420mm | Height adjustable in 7 positions
Colour: black



LMX1304 LMX.® Sissy squat bench PRO
Dimensions: L: 1200mm x W: 750mm x H: 450mm
Weight: 32 KG | Colour: black

Platforms



LMX1056 Crossmaxx®
Lifting platform for Power Rack
 Dimensions: L: 3750mm x W: 3050mm x H: 40mm
 High quality bamboo wood | Colour: black
 Compatible with LMX1053 Crossmaxx® Power Rack



LMX1744 Crossmaxx® Lifting platform 300x200cm
 Size: 3040mm x 2080mm with frame | Bamboo wooden platform
 Rubber tiles 30mm thickness

Squat racks



LMX1749 Crossmaxx® XL Foldable Squat Rack
 Dimensions unfolded: L: 1250mm x W: 635mm x H: 2295mm
 Adjustable J-hooks | Colour: black



LMX1740 Crossmaxx® Squat rack
 Dimensions: L: 1280mm x W: 1455mm x H: 1880mm
 Adjustable spotting arms and J-hooks | Colour: black



LMX1053 Crossmaxx® Power Rack
 Dimensions: L: 1900mm x W: 1900mm x H: 2450mm
 With spotting arms, heavy duty J-Hooks, total core trainer,
 band pegs and double pull-up option | Colour: black





LMX1748 Crossmaxx® Squat stand V2
 Dimensions: L: 1260mm x W: 1270mm x H: 1870mm
 Colour: black

Squat racks



LMX1058 Crossmaxx® Yoke PRO
 Dimensions: L: 1260mm x W: 1260mm x H: 2720mm
 Adjustable beam and J-hooks | Can be used as pulling device, harness included | Can be used as squat rack | Colour: black



LMX1745 Crossmaxx® Squat stand
 Dimensions: L: 680mm x W: 640mm x H: 1810mm
 Colour: black



LMX1052 Crossmaxx® Dip station for LMX1053/LMX1054
 Suitable for LMX1053 & LMX1054



LMX1051 Crossmaxx® Landmine for LMX1054
 Suitable for LMX1054



LMX1054 Crossmaxx® Half Rack
 Dimensions: L: 1900mm x W: 1610mm x H: 2300mm
 With spotting arms, heavy duty J-Hooks, band pegs and pull-up option | Colour: black



Storage racks



LMX94 Lifemaxx® PU dumbbell tower

Dimensions: L: 720 x W: 480 x H: 1600mm | Suitable for 10 sets of dumbbells (LMX72 series) | Fillable with water or sand for even more stability | Without dumbbells | Colour: black



LMX82W LMX® Dumbbell tower (black)

Dimensions: L: 550 mm x W: 450mm x H: 1350mm | Suitable for LMX79 Fixed dumbbells and LMX80 Chrome dumbbells



LMX® Dumbbell rack with 2 tiers

With dumbbellsaddles | Easily expandable
Available colour: black | Suitable for LMX72 PU dumbbells, LMX79 Fixed dumbbells, LMX75 Dumbbells

LMX1012.5 - 5 pair

Dimensions: L: 1200mm x W: 600mm x H: 800mm

LMX1012.6 - 6 pair

Dimensions: L: 1450mm x W: 600mm x H: 800mm

LMX1012.10 - 10 pair

Dimensions: L: 2400mm x W: 600mm x H: 800mm

LMX1012.12 - 12 pair

Dimensions: L: 2900mm x W: 600mm x H: 800mm

LMX1012.15 - 15 pair

Dimensions: L: 3600mm x W: 600mm x H: 800mm

LMX1012.18 - 18 pair

Dimensions: L: 4350mm x W: 600mm x H: 800mm

LMX1012.20 - 20 pair

Dimensions: L: 4800mm x W: 600mm x H: 800mm



LMX1014 LMX® Hexagon 3-tier dumbbell rack

Dimensions: L: 1570mm x W: 890mm x H: 1120mm | Suitable for LMX81 Hexagon dumbbells | Colour: black

Storage racks



LMX1068 LMX.® Barbell rack for 5 pcs
Dimensions: L: 680mm x W: 740mm x H: 1500mm
Weight: 57 KG | Colour: black



LMX1069 LMX.® Barbell rack for 10 pcs
Dimensions: L: 680mm x W: 1030mm x H: 1500mm
Weight: 84 KG | Colour: black



LMX1031 Crossmaxx® Bumper plate rack
Dimensions: L: 1000mm x W: 360mm x H: 310mm
Colour: black



LMX1037 Crossmaxx® Bumper plate rack V2
Dimensions: L: 1100mm x W: 392mm x H: 330mm
Colour: black



LMX1041 LMX.® Accessory tower
Ideal storage for all cable attachments | Dimensions:
L: 650mm x W: 650mm x H: 1000mm | Colour: black



LMX1030.50W LMX.® Weightplate rack
Dimensions: L: 1100mm x W: 750mm x H: 1400mm
Suitable for all LMX Ø50mm discs | Colour: black



LMX1032 Crossmaxx® Bumper plate stacker on wheels
Height of pin: 700mm | Colour: black



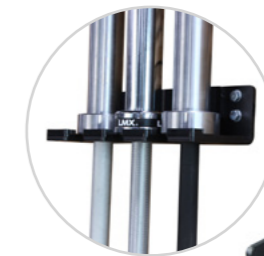
LMX1146 LMX.® Kettlebell rack
Dimensions: L: 1400mm x W: 550mm x H: 630mm
Colour: black



LMX1145 Crossmaxx® Kettlebell rack
Dimensions: L: 1200mm x W: 650mm x H: 760mm
Colour: black



LMX1027 Crossmaxx® Wall mounted bar rack
For 6 bars | With PVC lining to protect your bars
Colour: black



LMX1036 Crossmaxx® 3-bar vertical hanger
For 3 bars | With PVC lining to protect your bars | Colour: black



Storage racks



LMX1705 Crossmaxx® Plate tree
 Dimensions: L: 650mm x W: 681mm x H: 1500mm
 Colour: black



LMX1706 Crossmaxx® Plate wall rack
 Dimensions: L: 340mm x W: 130mm x H: 1200mm
 Colour: black



LMX1033.L Crossmaxx® 9 bar holder
Laser logo version
 For 9 bars | Suitable for Ø50mm bars | Dimensions:
 L: 440mm x W: 440mm x H: 160mm | Colour: black



LMX1033 Crossmaxx® 9 bar holder
 For 9 bars | Suitable for Ø50mm bars | Dimensions:
 L: 500mm x W: 500mm x H: 300mm | Colour: black



LMX1025.50 LMX.® Vertical bar rack
 For 5 bars | Available for Ø30mm bars (LMX1025.30) and
 Ø50mm bars (LMX1025.50) | Dimensions: L: 500mm
 x W: 500mm x H: 250mm | Colour: black

Storage racks



LMX1100 LMX.® Gymball holder
Ø300mm



LMX1104 LMX.® Gymball wall holder
Colour: black



LMX1144 LMX.® Studio pump rack. For max. 8 sets
Provision for max. 10 body pump sets (Code: LMX1127 / LMX1128) Dimensions: L: 750mm x W: 780mm x H: 1250mm
Colour: black



LMX1143 LMX.® Studio pump rack. For max. 30 sets
Provision for max. 30 body pump sets (Code: LMX1127 / LMX1128) With multi directional wheels | Dimensions: L: 1140mm x W: 1100mm x H: 1440mm | Colour: black



LMX1286 Crossmaxx® Wall mount
Provides a solution for battle ropes and suspension trainers
Dimensions: L: 300mm x W: 100mm | Colour: black



LMX1151 LMX.® Vinyl dumbbell rack with multi dir. wheels
Suitable for LMX1150 vinyl dumbbells | With multi directional wheels | Dimensions: L: 970mm x W: 600mm x H: 1200mm | Colour: black



LMX1225 LMX.® Aerobic mat wall rack. For 10 mats
Suitable for 10 LMX aerobic mats | Easy wall mounting
Colour: black



LMX1307 LMX.® Boxing PRO wall mount
Dimensions: L: 775mm x W: 771mm x H: 655mm | Colour: black



LMX1227 LMX.® Aerobic mat rack
Suitable for 30 aerobic mats of 180cm | Dimensions: L: 730mm x W: 610mm x H: 1890mm | Colour: black



LMX1105 LMX.® Gymball rack
For 9 gymballs | Height: 1950mm | Colour: black

Storage racks



LMX1253 LMX.® Medicineball rack.
For 10 medicineballs | Dimensions: L: 470 x W: 900mm x H: 1360mm Colour: black



LMX1251 LMX.® Medicineball rack. For 5 medicineballs | Dimensions: L: 470 x W: 550mm x H: 1360mm Colour: black



LMX2109 Terra-Core Rack
Dimensions: L: 1010mm x W: 840mm x H: 1980mm
Suitable for 5pcs | Colour: black



LMX1247 LMX.® Storage cart
Dimensions: L: 1270mm x W: 620mm x H: 950mm
Colour: black



LMX1248 LMX.® Wallball rack. For 4 wallballs
Colour: black



LMX1552 LMX.® Sandbag rack
Suitable for 10 challenge bags | Colour: black



LMX1252 LMX.® Medicineball rebounder
Diameter of rebounder: Ø960mm | Adjusts to 4 positions
Dimensions: L: 970mm x W: 1150mm x H: 1100mm
Colour: black



LMX1700 Crossmaxx® Wall mounted pull-up rack
Dimensions: L: 1250mm x W: 800mm | Grip Ø30mm
Colour: black



LMX1704 Crossmaxx® Chalk stand
Dimensions: L: 500mm x W: 500mm x H: 915mm
Inner diameter of bowl: 275mm | Colour: black



LMX1702 Crossmaxx® Multi-grip pull-up rack
Dimensions: L: 1310mm x W: 600mm | Grip Ø30mm
Colour: black

Crossmaxx® Storage racks



Crossmaxx® Storage Rack - model 1
Dimensions: H: 180cm x L: 135cm x D: 55cm



Crossmaxx® Storage Rack - model 2
Dimensions: H: 180cm x L: 262,5cm x D: 55cm



Crossmaxx® Storage Rack - model 3
Dimensions: H: 180cm x L: 262,5cm x D: 55cm



Crossmaxx® Storage Rack - model 4
Dimensions: H: 180cm x L: 390cm x D: 55cm



LMX1793 Crossmaxx® Storage pin for fractional plates
Storage pin for fractional plates



LMX1794 Crossmaxx® Storage multi hanger
Dimensions: L: 540mm x W: 180mm x H: 60mm | Colour: black



LMX1795 Crossmaxx® Storage upright element
Dimensions: L: 540mm x W: 75mm x H: 1800mm
Colour: black



LMX1796 Crossmaxx® Storage ball shelf
Dimensions: L: 1200mm x W: 540mm x H: 60mm
Colour: black

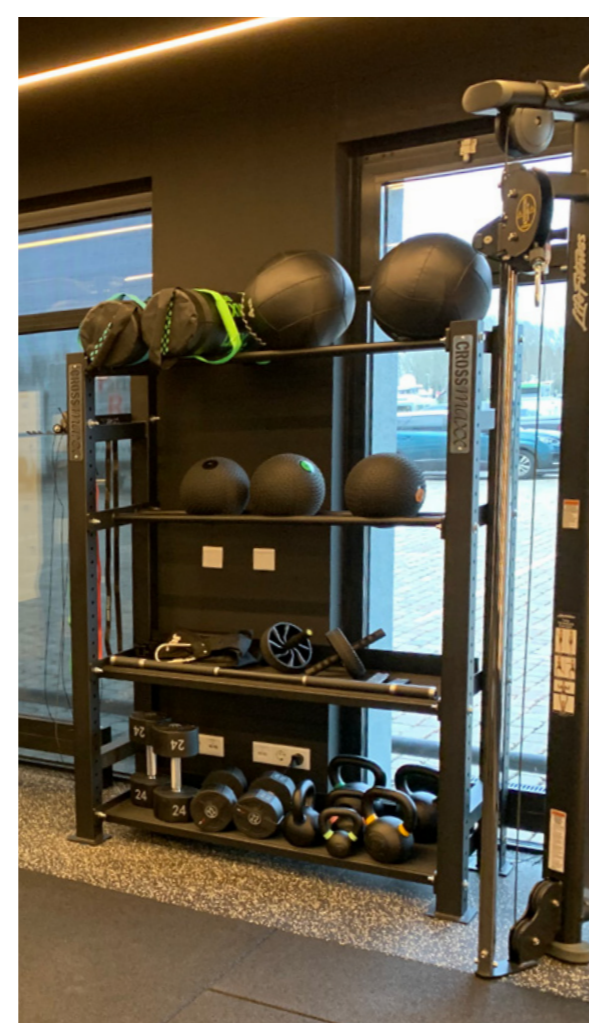


LMX1797 Crossmaxx® Storage dumbbell/kettlebell shelf
Dimensions: L: 1200mm x W: 540mm x H: 60mm
Colour: black



LMX1798 Crossmaxx® Storage plate shelf
Dimensions: L: 1200mm x W: 540mm x H: 60mm
Colour: black

Crossmaxx® Storage racks



PULLEY

LMX1045 Dual Adjustable Pulley
 Dimensions: L: 1734mm x W: 1122mm x H: 2150mm
 Weight: 321,9 KG | Weight stack: 2x 77 KG | 1:2 pulley ratio



Included accessories:
 Tricep rope | Ankle strap | Waist Belt | Straight bar | 2 x strap handle





RIGXLF4 Crossmaxx® Rig XL free-standing model F4
Dimensions: L: 6175mm x W: 1950mm x H: 3550mm | Colour: black

The Crossmaxx® Rigs are versatile, strong rigs that can be fully customized to suit your needs. Because the Rigs can be built modularly, almost anything is possible. This flexibility ensures that the Crossmaxx® Rigs are an indispensable part for all gyms/boxes and studios.

Crossmaxx® Rigs are available both free standing and wall mounted. Is it not possible to drill in the floor? Then our special base plates offer the solution. In our range you will find a great variety of fixed rig setups, but we can also completely customize a rig for your gym/box. We offer you the possibility to select the desired components and design the rig exactly the way you like it. Do you need help? We are happy to think along with you about the best rig for your space!

As it is the eyecatcher of your gym, we made sure that all components are strong, good looking and durable and therefore perfect for professional use. The rigs are powder coated matt black, which gives them a nice, tough look in addition to a good grip. The Crossmaxx® Rig XL upright stands are built to last with a wall thickness of 3mm, a laser-cut numbering in the frame and a size of 75 x 75 mm.

Also, did you know that we can make a design for your ideal gym / box? Our gym design team can process your wishes and ideas in a 3D drawing and advise you on how to get the best out of your space.

Would you like more information about our rigs, or advice about setting up a gym/box? Please feel free to contact us.

Crossmaxx® Rig XL free-standing



RIGXLF2 Crossmaxx® Rig XL free-standing model F2
Dimensions: L: 3125mm x W: 1950mm x H: 2650mm
Colour: black



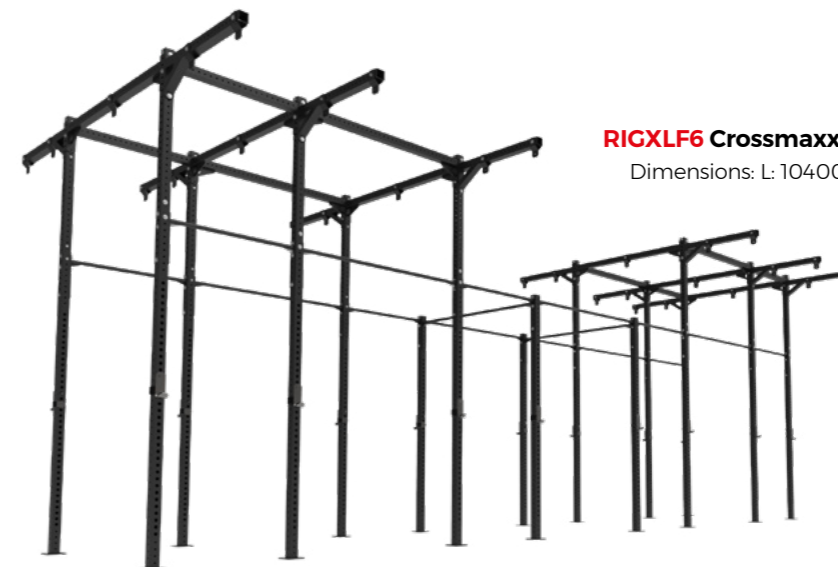
RIGXLF3 Crossmaxx® Rig XL free-standing model F3
Dimensions: L: 4300mm x W: 1950mm x H: 3550mm
Colour: black



RIGXLF5 Crossmaxx® Rig XL free-standing model F5
Dimensions: L: 7350mm x W: 1950mm x H: 2650mm
Colour: black



RIGXLF7 Crossmaxx® Rig XL free-standing model F7
Dimensions: L: 4300mm x W: 1950mm x H: 2650mm
Colour: black



RIGXLF6 Crossmaxx® Rig XL free-standing model F6
Dimensions: L: 10400mm x W: 4078mm x H: 3900mm
Colour: black

Crossmaxx® Rig XL free-standing



RIGXLF9 Crossmaxx® Rig XL free-standing model F9
 Dimensions: L: 1250mm x W: 1950mm x H: 2650mm
 Colour: black



RIGXLF10 Crossmaxx® Rig XL free-standing model F10
 Dimensions: L: 1250mm x W: 1950mm x H: 2650mm
 Colour: black



RIGXLFH3 Crossmaxx® Rig XL free-standing model H3
 Dimensions: L: 7350mm x W: 4078mm x H: 3800mm
 Colour: black



RIGXLFH5 Crossmaxx® Rig XL free-standing model H5
 Dimensions: L: 1250mm x W: 4078mm x H: 3800mm
 Colour: black



RIGXLF11 Crossmaxx® Rig XL free-standing model F11
 Dimensions: L: 4300mm x W: 1950mm x H: 2650mm
 Colour: black



RIGXLF12 Crossmaxx® Rig XL free-standing model F12
 Dimensions: L: 7350mm x W: 1950mm x H: 2650mm
 Colour: black



RIGXLFH4 Crossmaxx® Rig XL free-standing model H4
 Dimensions: L: 10400mm x W: 4078mm x H: 3800mm
 Colour: black



RIGXLFH1 Crossmaxx® Rig XL free-standing model H1
 Dimensions: L: 1250mm x W: 4078mm x H: 3800mm
 Colour: black



RIGXLFH2 Crossmaxx® Rig XL free-standing model H2
 Dimensions: L: 4300mm x W: 4078mm x H: 3800mm
 Colour: black

Crossmaxx® Rig XL wall-mounted



RIGXLW3 Crossmaxx® Rig XL wall-mounted model W3
 Dimensions: L: 7350mm x W: 1175mm x H: 2650mm
 Colour: black



RIGXLW4 Crossmaxx® Rig XL wall-mounted model W4
 Dimensions: L: 7350mm x W: 1175mm x H: 3900mm
 Colour: black



RIGXLW5 Crossmaxx® Rig XL wall-mounted model W5
 Dimensions: L: 1250mm x W: 1175mm x H: 2650mm
 Colour: black

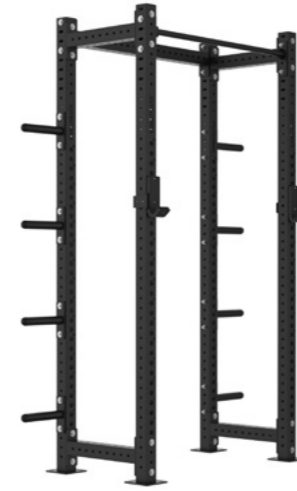


RIGXLW6 Crossmaxx® Rig XL wall-mounted model W6
 Dimensions: L: 4300mm x W: 1175mm x H: 2650mm
 Colour: black



RIGXLW7 Crossmaxx® Rig XL wall-mounted model W7
 Dimensions: L: 7350mm x W: 1175mm x H: 2650mm
 Colour: black

Crossmaxx® Rig XL setups half-rack model



RIGXLHRS1 Crossmaxx® Rig XL half-rack model S1
 Dimensions: L: 1770mm x W: 650mm x H: 2400mm
 Colour: black



RIGXLHRS1B Crossmaxx® Rig XL half-rack model S1 + Baseplate
 Dimensions: L: 1770mm x W: 1475mm x H: 2420mm
 Colour: black



RIGXLHRS2 Crossmaxx® Rig XL half-rack model S2
 Dimensions: L: 3125mm x W: 802mm x H: 2400mm
 Colour: black



RIGXLHRS2B Crossmaxx® Rig XL half-rack model S2 + Baseplate
 Dimensions: L: 1770mm x W: 1475mm x H: 2420mm
 Colour: black



RIGXLHRS3 Crossmaxx® Rig XL half-rack model S3
 Dimensions: L: 4300mm x W: 802mm x H: 2400mm
 Colour: black



RIGXLHRS3B Crossmaxx® Rig XL half-rack model S3 + Baseplate
 Dimensions: L: 4525mm x W: 1475mm x H: 2420mm
 Colour: black



Crossmaxx® Rig XL setups half-rack model



RIGXLHRS4 Crossmaxx® Rig XL half-rack model S4
 Dimensions: L: 7350mm x W: 802mm x H: 2400mm
 Colour: black



RIGXLHRS4B Crossmaxx® Rig XL half-rack model S4 + Baseplate
 Dimensions: L: 7575mm x W: 1475mm x H: 2420mm
 Colour: black

Crossmaxx® Rig XL setups wall-storage model



RIGXLWS1 Crossmaxx® Rig XL wall-storage model WS1
 Dimensions: L: 1950mm x W: 480mm x H: 2650mm
 Colour: black



RIGXLWS2 Crossmaxx® Rig XL wall-storage model WS2
 Dimensions: L: 3815mm x W: 480mm x H: 2650mm
 Colour: black



RIGXLWS3 Crossmaxx® Rig XL wall-storage model WS3
 Dimensions: L: 5700mm x W: 480mm x H: 2650mm
 Colour: black



Crossmaxx® Rig XL setups wall-storage pull-up model



RIGXLWSP1 Crossmaxx® Rig XL
wall-storage-pull-up model WSP1

Dimensions: L: 1950mm x W: 990mm x H: 2400mm
Colour: black



RIGXLWSP1B Crossmaxx® Rig XL
wall-storage-pull-up model WSP1 + Baseplate

Dimensions: L: 1950mm x W: 1050mm x H: 2420mm
Colour: black



RIGXLWSP2 Crossmaxx® Rig XL
wall-storage-pull-up model WSP2

Dimensions: L: 3815mm x W: 990mm x H: 2400mm
Colour: black



RIGXLWSP2B Crossmaxx® Rig XL
wall-storage-pull-up model WSP2 + Baseplate

Dimensions: L: 3815mm x W: 1050mm x H: 2420mm
Colour: black



RIGXLWSP3 Crossmaxx® Rig XL
wall-storage-pull-up model WSP3

Dimensions: L: 5700mm x W: 990mm x H: 2400mm
Colour: black



RIGXLWSP3B Crossmaxx® Rig XL
wall-storage-pull-up model WSP3 + Baseplate

Dimensions: L: 5700mm x W: 1050mm x H: 2420mm
Colour: black

Components

LMX1730 Crossmaxx®
XL upright stand
Length: 2650mm | Tube size
75x75mm | Colour: black

LMX1789 Crossmaxx®
XL upright stand
75x75mm 380cm
Length: 3800mm | Tube size
75x75mm | Colour: black

LMX1755 Crossmaxx®
XL upright stand
75x75mm 240cm
Length: 2400mm | Tube size
75x75mm | Colour: black



LMX1731 Crossmaxx®
XL upright stand extender
Length: 900mm | To be used in combination
with LMX1730 | Colour: black

LMX1766 Crossmaxx®
XL upright stand extender
Length: 1250mm | To be used in combination
with LMX1730 | Colour: black



LMX1757 Crossmaxx®
XL Diagonal strengthener for extender
Colour: black

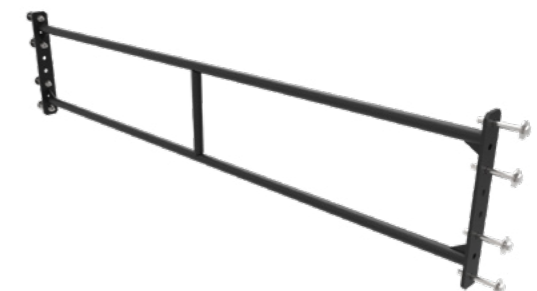


LMX1781 Crossmaxx®
XL 110cm Single beam V2
Grip dia. 32mm | Colour: black

LMX1782 Crossmaxx®
XL 180cm Single beam V2
Grip dia. 32mm | Colour: black



LMX1712 Crossmaxx®
110cm Standard Beam
Grip Ø 30mm | Colour: black



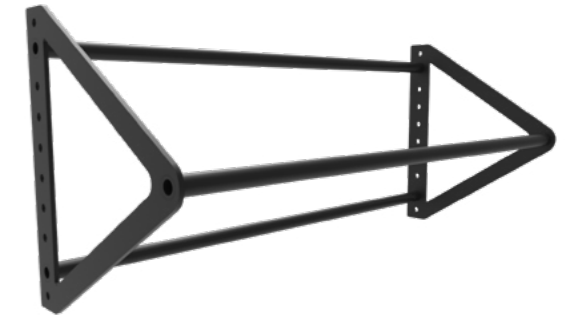
LMX1713 Crossmaxx® 180cm Standard Beam
Grip Ø 30mm | Colour: black



Components



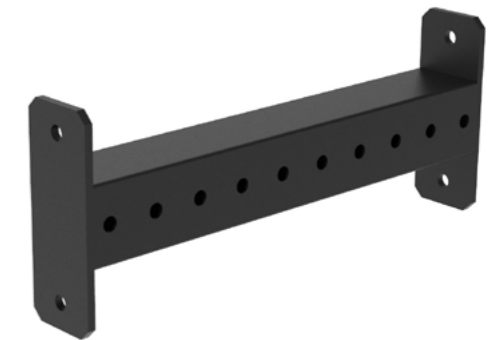
LMX1714 Crossmaxx® 110cm Monkey Beam
Grip Ø 30mm | Colour: black



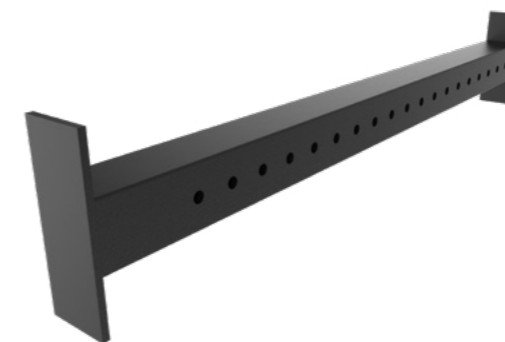
LMX1726 Crossmaxx® 110cm Triangle Beam
Grip Ø 30mm | Colour: black



LMX1772 Crossmaxx® 180cm Bare Beam
Grip Ø 30mm | Colour: black / bare steel



LMX1775 Crossmaxx® XL 50cm Crossbar
Colour: black



LMX1760 Crossmaxx® XL 110cm Crossbar
Dimensions: L: 1100mm x W: 75mm x H: 350mm
Colour: black



LMX1761 Crossmaxx® XL 180cm Crossbar
Dimensions: L: 1800mm x W: 75mm x H: 350mm
Colour: black

Components



LMX1783 Crossmaxx® XL 110cm Muscle up attachment for Crossbar
Grip dia. 32mm | Length: 1100mm | Suitable for LMX1760 and LMX1761 | Colour: black



LMX1759 Crossmaxx® XL Trawler Short
Dimensions: L: 664mm x W: 75mm x H: 350mm
Colour: black



LMX1758 Crossmaxx® XL Dip station for rig V2
Colour: black



LMX1776 Crossmaxx® XL Wall mount V2
Dimensions: L: 250mm x W: 200mm x H: 200mm
Colour: black



LMX1756 Crossmaxx® XL 180cm Logo Crossbar
Colour: black



LMX1762 Crossmaxx® XL Trawler
Dimensions: L: 1050mm x W: 75mm x H: 350mm
Colour: black



LMX1718 Crossmaxx® Boxing bag Arm
Colour: black



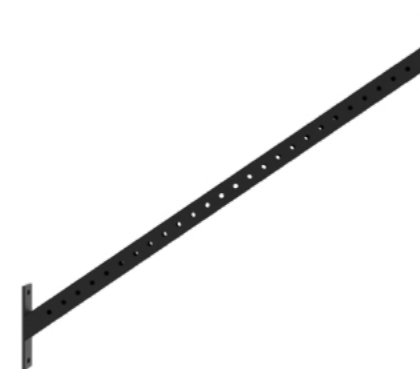
LMX1784 Crossmaxx® XL 180cm Monkey Wing V2
Colour: black



LMX1777 Crossmaxx® XL Base plate Small
Dimensions: L: 875mm x W: 300mm x H: 8mm
Colour: black



LMX1779 Crossmaxx® XL Diagonal connector for base plate Small
Colour: black



LMX1767 Crossmaxx® XL Incline Crossbar 110
Colour: black



LMX1733 Crossmaxx® XL Spotting Arm set
Colour: black



LMX1734 Crossmaxx® XL J-Hook set
Colour: black | Material protector: PVC



LMX1739 Crossmaxx® XL J-Hook set PRO
Colour: black | Material protector: High-density polyethylene



LMX1778 Crossmaxx® XL Base plate Large
Dimensions: L: 1475mm x W: 300mm x H: 10mm
Colour: black

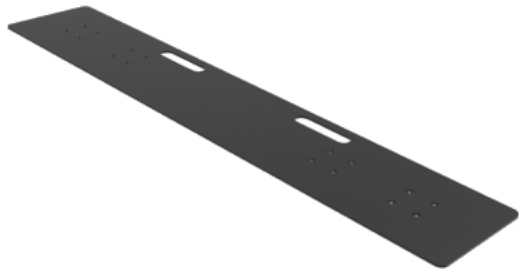


LMX1780 Crossmaxx® Diagonal connector for base plate Large
Colour: black



LMX1763 Crossmaxx® XL Bracket for Trawler & Crossbar
To be used with Crossbar or Trawler | Colour: black

Components



LMX1765 Crossmaxx® XL Skid plate
Dimensions: L: 2400mm x W: 450mm
Weight: 70 KG | Colour: black



LMX1754 Crossmaxx® XL Bar holder for rig
Colour: black



LMX1768 Crossmaxx® XL Peg board for rig 180cm
Dimensions: L: 1750mm x W: 300mm
Can be mounted on LMX1713 | Pegs included



LMX1785 Crossmaxx® XL 180cm Ball shelf
Length 1800mm | Colour: black



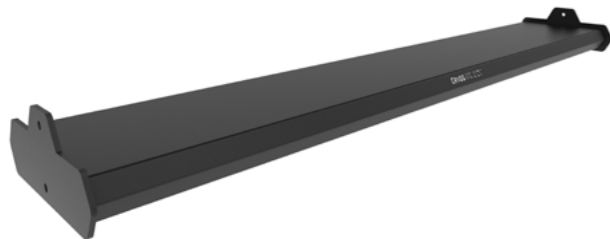
LMX1786 Crossmaxx® XL 180cm Dumbbell shelf
Length 1800mm | Colour: black



LMX1770 Crossmaxx® XL Pull-Up single handle
Grip Ø 30mm | Can be mounted on Crossbar | Colour: black



LMX1771 Crossmaxx® XL Kid Pull-up bar
Length: 990mm | Grip Ø 30mm | Colour: black



LMX1787 Crossmaxx® XL 180cm Kettlebell shelf
Length 1800mm | Colour: black



LMX1788 Crossmaxx® XL 180cm Plate shelf
Length 1800mm | Colour: black



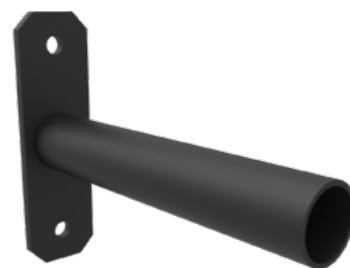
LMX1774 Crossmaxx® XL Multi grip
To be used with LMX1760 | Colour: black



LMX1773 Crossmaxx® Double Wallball target
Colour: black



LMX1722 Crossmaxx® Total Core Trainer for Rig
Colour: black



LMX1735 Crossmaxx® XL Plate Holder for Rig
Colour: black



LMX1769 Crossmaxx® XL Ball grip
Diameter ball grip 70mm | Can be mounted on Crossbar
Colour: black



CMXOUTC05 Crossmaxx® Outdoor container model C05 - excl. container
Galvanized

Bring your (home) gym or CrossFit box outside!

With Crossmaxx® Outdoor you can easily expand your current gym, offer completely new training sessions or even start a new gym/box!

Outdoor training has grown massively in popularity. With our outdoor range you can offer a wide variety of exciting and challenging workouts for a growing number of clients. All Crossmaxx® Outdoor components and setups are specially designed to offer outdoor workouts in a safe, fun and efficient way.

You can compose your own rig or choose from a variety of setups. We offer free standing models and a variety of container setups that truly allows you to expand your business. As always we are happy to share our knowledge and experience with you to create your perfect outdoor solution!

Crossmaxx® Outdoor setups container models



CMXOUTC01 Crossmaxx® Outdoor container model C01 - excl. container
Galvanized



CMXOUTC02 Crossmaxx® Outdoor container model C02 - excl. container
Galvanized



CMXOUTC03 Crossmaxx® Outdoor container model C03 - excl. container
Galvanized



CMXOUTC04 Crossmaxx® Outdoor container model C04 - excl. container
Galvanized



CMXOUTC06 Crossmaxx® Outdoor container model C06 - excl. container
Galvanized

Crossmaxx® Outdoor setups container models



CMXOUTC07 Crossmaxx® Outdoor container model C07 - excl. container
Galvanized

Crossmaxx® Outdoor setups container models



CMXOUTC10 Crossmaxx® Outdoor container model C10 - excl. container
Galvanized



CMXOUTC08 Crossmaxx® Outdoor container model C08 - excl. container
Galvanized



CMXOUTC09 Crossmaxx® Outdoor container model C09 - excl. container
Galvanized



CMXOUTC11 Crossmaxx® Outdoor container model C11 - excl. container
Galvanized



**CMXOUTF05 Crossmaxx® Outdoor
free-standing model F05**

Dimensions: L: 4076mm x W: 4032mm x H: 3800mm
Galvanized

Crossmaxx® Outdoor setups free-standing models



**CMXOUTF01 Crossmaxx® Outdoor
free-standing model F01**

Dimensions: L: 1160mm x W: 1916mm x H: 2500mm
Galvanized



**CMXOUTF02 Crossmaxx® Outdoor
free-standing model F02**

Dimensions: L: 4076mm x W: 1916mm x H: 2500mm
Galvanized



**CMXOUTF03 Crossmaxx® Outdoor
free-standing model F03**

Dimensions: L: 6992mm x W: 1916mm x H: 2500mm
Galvanized



**CMXOUTF04 Crossmaxx® Outdoor
free-standing model F04**

Dimensions: L: 1160mm x W: 2974mm x H: 3800mm
Galvanized



**CMXOUTF06 Crossmaxx® Outdoor
free-standing model F06**

Dimensions: L: 1160mm x W: 2974mm x H: 3800mm
Galvanized



**CMXOUTF07 Crossmaxx® Outdoor
free-standing model F07**

Dimensions: L: 1160mm x W: 2974mm x H: 3800mm
Galvanized

Components



LMX1952 Crossmaxx® Outdoor Single beam 1000mm
Length: 1000mm | Grip dia. 34mm | Galvanized



LMX1956 Crossmaxx® Outdoor Crossbar 1756mm
Length: 1756mm | Tube size 80x80mm | Galvanized



LMX1953 Crossmaxx® Outdoor Single beam 1756mm
Length: 1756mm | Grip dia. 34mm | Galvanized



LMX1957 Crossmaxx® Outdoor Crossbar 2512mm
Length: 2512mm | Tube size 80x80mm | Galvanized



LMX1954 Crossmaxx® Outdoor Crossbar 676mm
Length: 676mm | Tube size 80x80mm | Galvanized



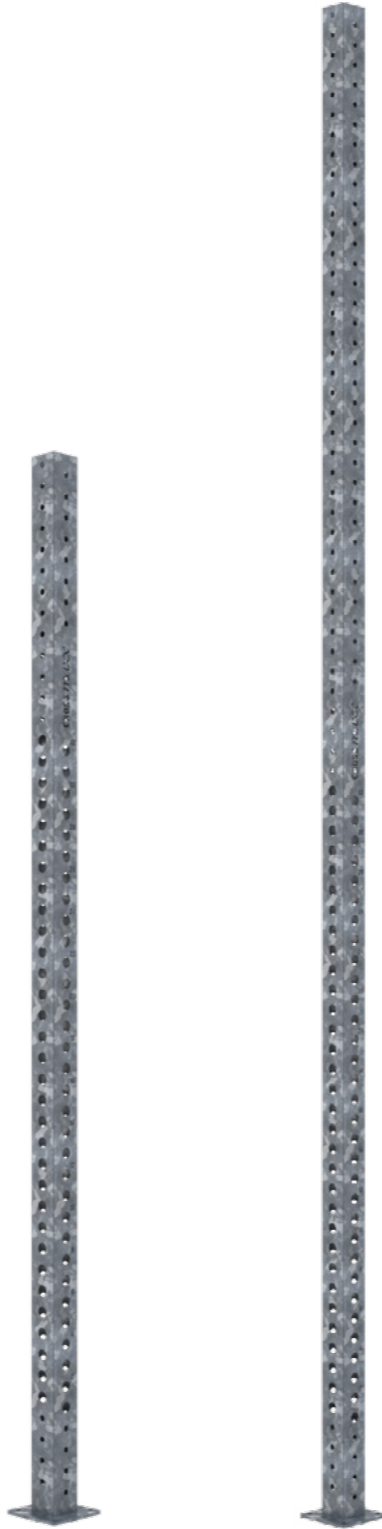
LMX1958 Crossmaxx® Outdoor Container mount
Length: 2672mm | Tube size 80x80mm | Galvanized



LMX1955 Crossmaxx® Outdoor Crossbar 1000mm
Length: 1000mm | Tube size 80x80mm | Galvanized



LMX1959 Crossmaxx® Outdoor Connector 1000mm
Length: 1000mm | Tube size 80x80mm | Galvanized



LMX1950 Crossmaxx® Outdoor Upright stand 250cm
Length: 2500mm | Tube size 80x80mm | Galvanized

LMX1951 Crossmaxx® Outdoor Upright stand 380cm
Length: 2500mm | Tube size 80x80mm | Galvanized





Components



LMX1960 Crossmaxx® Outdoor Connector 1756mm
Length: 1756mm | Tube size 80x80mm | Galvanized



LMX1963 Crossmaxx® Outdoor Trawler
Length: 1058mm | Tube size 80x80mm | Galvanized



LMX1968 Crossmaxx® Outdoor Double wallball target
Height: 987mm | Width: 300mm | Galvanized



LMX1962 Crossmaxx® Outdoor Diagonal
Length: 780mm | Tube size 80x80mm | Galvanized



LMX1961 Crossmaxx® Outdoor Leveling foot
Length: 2500mm | Tube size 80x80mm | Galvanized



LMX1964 Crossmaxx® Outdoor racket
Galvanized



LMX1965 Crossmaxx® Outdoor J-hook set
Per set | Galvanized



LMX1966 Crossmaxx® Outdoor Spotting arm set
Per set | Galvanized



LMX1967 Crossmaxx® Outdoor Dip station
Galvanized



LMX1969 Crossmaxx® Outdoor Ground base
Length: 650mm | Galvanized



Rubber flooring



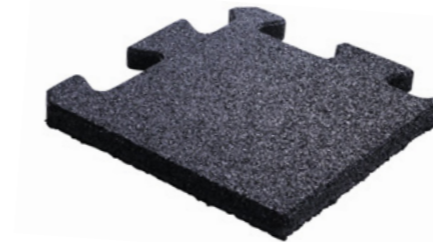
LMX1345 FLR® Jigsaw tile

Dimensions: L: 500mm x W: 500mm x H: 20mm
Colour: black



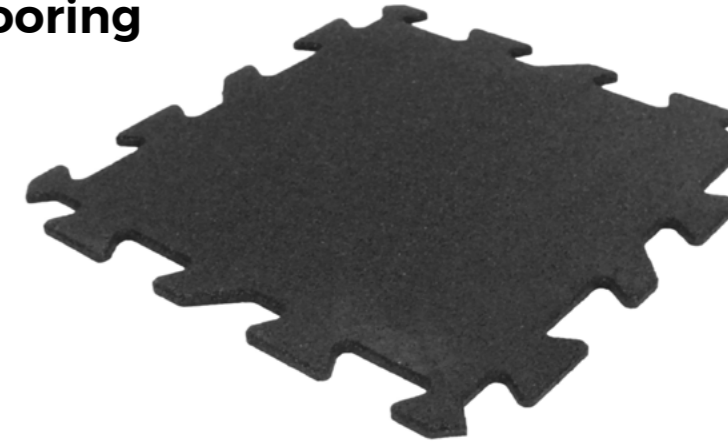
LMX1346 FLR® Jigsaw edge

Dimensions: L: 500mm x W: 250mm x H: 20mm
Colour: black



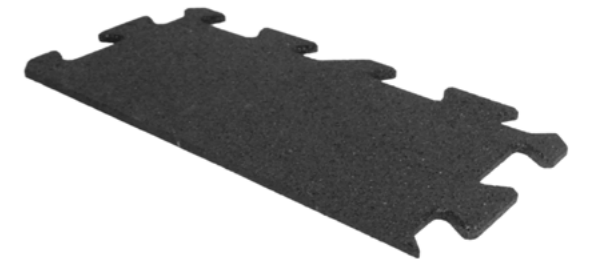
LMX1347 FLR® Jigsaw corner

Dimensions: L: 250mm x W: 250mm x H: 20mm
Colour: black



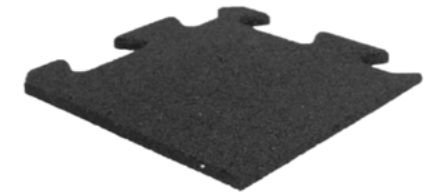
LMX1365 FLR® ECO Puzzle tile

Dimensions: L: 500mm x W: 500mm x H: 10mm
Colour: black



LMX1366 FLR® ECO Puzzle edge

Dimensions: L: 500mm x W: 250mm x H: 10mm
Colour: black



LMX1367 FLR® ECO Puzzle corner

Dimensions: L: 250mm x W: 250mm x H: 10mm
Colour: black



Rubber flooring



LMX1360 FLR® Premium tile

Dimensions: L: 1000 x W: 1000 x H: 20mm
EPDM top layer | Colour: black with 15% white



LMX1362 FLR® Premium connector 2 studs

Interlocking device for LMX1360 floor
Quantity needed: circumference of the whole area



LMX1363 FLR® Premium connector 4 studs

Interlocking device for LMX1360 floor
Quantity needed: quantity of tiles*5-(circumference*1.5)



LMX1376 FLR® Premium edge

Dimensions: L: 500 x W: 150 x H: 20mm | EPDM top layer
Colour: black with 15% white



LMX1377 FLR® Premium corner

Dimensions: L: 150 x W: 150 x H: 20mm | EPDM top layer
Colour: black with 15% white



LMX1340 FLR® Standard granulate tile 20mm

Dimensions: L: 1000 x W: 1000 x H: 20mm | Colour: black

LMX1380 FLR® Standard granulate tile 15mm

Dimensions: L: 1000 x W: 1000 x H: 15mm | Colour: black



LMX1361 FLR® Premium BRANDED tile

Dimensions: L: 1000 x W: 1000 x H: 20mm | EPDM top layer
Colour: black with Crossmaxx logo



LMX1341 FLR® Fine granulate tile 20mm

Dimensions: L: 1000 x W: 1000 x H: 20mm | Fine grain rubber tile
Colour: black

LMX1381 FLR® Fine granulate tile 15mm

Dimensions: L: 1000 x W: 1000 x H: 15mm | Fine grain rubber tile
Colour: black

Sprintracks

Sprintracks are the perfect way to upgrade your gym and make it more versatile. Our eye-catching sprintracks are an ideal choice for sled and sprint workouts and other forms of high performance training. The durable sprintracks are the right addition to any kind of gym. With our big assortment of standard tracks and option to make it 100% customized; we have the track that suits you most! **Please contact us for advice or to discuss your own sprintrack ideas.**



Option 1

LMX1373 Sprintrack

Dimensions: L: 11000mm x W: 1500mm

- LMX1373.GREEN
- LMX1373.GREY
- LMX1373.BLACK
- LMX1373.RED
- LMX1373.BLUE



LMX1374 Sprintrack

Dimensions: L: 15000mm x W: 2000mm

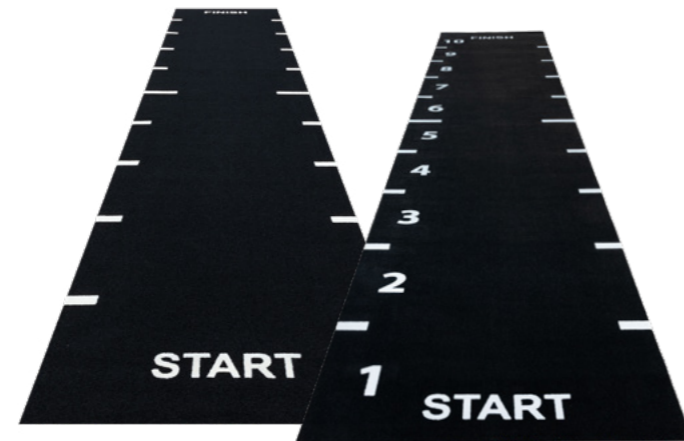
- LMX1374.GREEN
- LMX1374.GREY
- LMX1374.BLACK



Option 2

Extreme sprintrack unlined

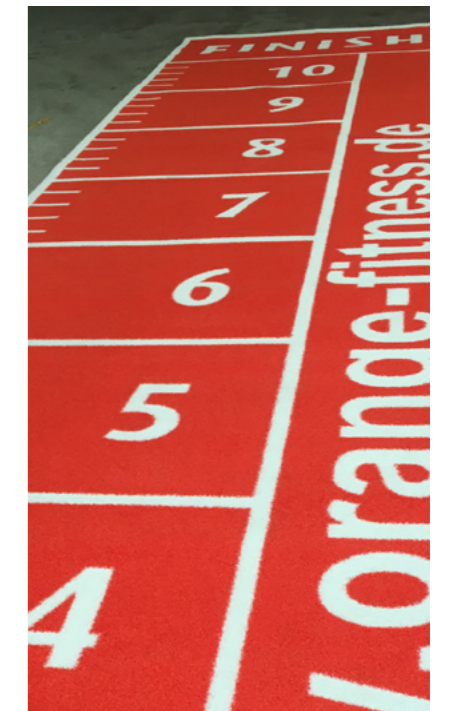
Pile Height: 13mm | Width: Standard 2000 & 4000mm | Length: Custom-made



Option 3

Extreme sprintrack start & finish or numbers

Pile Height: 13mm | Width: Standard 2000 & 4000mm | Length: Custom-made | Coloured lines and text: White | Dark Grey | Black | Dark Green | Light Green | Blue | Yellow | Red | Pink | Orange | Gold (other colours available on request)

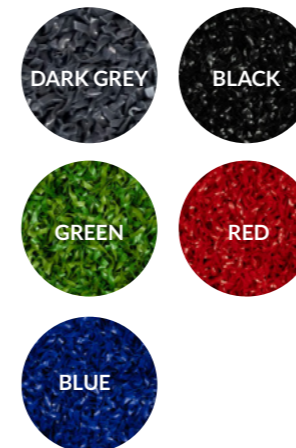


Option 4

Extreme sprintrack custom-made

Pile Height: 13mm | Width: Custom, max 4000mm per production | Length: Custom-made

Available Colors Option 1



Available Colors Option 2 & Option 3



Available Colors Option 4



Gym Design

From home gym to professional fitness center - we can design and install your dream gym in three steps!

Perfectly designing and equipping your gym is important to get the very best out of your training space. A beautiful, sleek and efficiently designed training space can make the difference between a nice gym and an amazing gym! With our three-step gym design program, we provide clear and professional advice about everything that comes with setting up or refreshing your training facility.



STEP 1 Research and advice

The first step is to sit down and get to know you, your space and your vision. We discuss what you want and how we can help you realize this. If needed, we will be happy to visit your location (within the Netherlands /Belgium) or we will request more pictures. This allows us to take even better account of any special features such as sloping walls, low ceilings or pillars. Once we have fully understood your wishes and the possibilities for your training space, we will provide you with professional advice.



STEP 2 Gym design

Based on our initial conversation and our advice, we will start making your personal 3D visuals. With this personal 3D design, we can give you all options and a realistic picture of the look and feel of your gym. In this step we will also see if all your wishes will fit in the available space. Our experts keep in mind to have enough space to move around, to train and to keep sufficient space available for storage of equipment. Together with our expert you will create the most suitable layout for your gym.



STEP 3 Delivery & installation

The third and final step is the delivery and installation of the equipment on a date that suits you. Our professionals ensure a smooth delivery, so you don't have to worry about anything! All you have to do now is (re) open your doors and help your members become the best version of themselves!

Feel free to contact us to see how we can design your ideal training space together.



Projects



Projects



Corporate Social Responsibility

We care

We work in the fitness & health industry, we care about the health of our customers and our employees. That is why our goal is to find the right balance between people, the environment and economic interests so that our processes become a bit more sustainable and our ecological footprint is reduced. We think it is important that our customers can trust that Lifemaxx products are made with respect for people and the environment. When we see we can do better, we try to do so within our means.

Production

We have long-term partnerships with our regular factories and suppliers. We visit them annually, which means we can guarantee the right working conditions for employees. We produce our products as local as possible while staying competitive. Our factories are monitored by us twice a year to see if production is as ecological as possible; for instance cast iron factories melt iron now with electricity instead of charcoal. Products are packed in recycled cardboard. Our warehousing is close to the Rotterdam Port to reduce transport emissions.

Our team

We are constantly working to improve the way we work and focus on the well-being and diversity of our colleagues. We make our building more sustainable by, for example, only using LED lighting. We are also constantly working on increasing sustainability in our transport and logistics process. Orders placed are delivered by transport companies that use EURO 6 vehicles or our own installation team that use EURO 6 vehicles. Also an important part in our warehouse is recycling, reducing waste and the use and re-use of sustainable materials.

Society

As a company, we also think it is important to contribute to our society. We do this by supporting various charities. Examples are annual donations to aid organizations for animals and people and one example is our Pink Ribbon promotion in which special pink bars were sold and 50% of these went to Pink Ribbon to support the financing of research and projects in the field of treatment and aftercare. and long-term effects of breast cancer.



"The people working within Lifemaxx B.V. vary in age between 18 and 70 years."



"Throughout our entire building, all lighting is LED lighting."



"We have an in-house fitness where all people working at Lifemaxx B.V. can do their workout."



"We provide fresh fruit at work every week."

Ordering

Ordering from Lifemaxx can be done in several ways:

Website: www.lifemaxx.com

Email: info@lifemaxx.com / sales@lifemaxx.com

Phone: +31 (0)10 415 9800

When ordering please provide us with the following information:

- Full invoice- and shipping address
- VAT number if applicable
- Product codes and description of the products you wish to order
- Method of payment

Prices:

- All prices exclude VAT
- All prices exclude optional delivery charges

Delivery:

- We can deliver the order to you by parcel, pallet or Lifemaxx delivery service
- Delivery charges can be requested via info@lifemaxx.com.

Lifemaxx delivery service is not available for orders outside The Benelux.

Warranty:

All Lifemaxx products are manufactured with our utmost care and craftsmanship. If any defects may arise, the following warranty regulations apply. Lifemaxx products have a standard 1 year warranty period, with some exceptions:

- 2 year warranty on all Lifemaxx® PU products.
- 6 months warranty on all cable attachments, all inflated materials, vinyl coated materials, all balls and bags. Except for LMX1240 Slamballs, slamballs have a 3 month warranty period.
- 3 months warranty on all elastic materials, all jump ropes and aerobic mats
- No warranty on LMX.® Boxing products, neck support rolls and ankle straps.

If problems arise within that period, Lifemaxx will repair or replace your product. We may request photographic evidence or will ask you to return the product to us for inspection. Lifemaxx will not accept responsibility for defects arising from the misuse of any goods, or problems that arise outside the control of Lifemaxx.

Not covered by the warranty (and tips to increase the lifetime of your products):

- Any damage resulting from use with racks not sourced from Lifemaxx. For example rubber dumbbells should be stored on Lifemaxx dumbbell racks which feature saddles to increase the lifetime of the products.
- Damage resulting from slamming or inflating products which are not designed for these purposes. For example medicine balls are not made for slamming or inflating.
- Damage resulting from throwing or dropping products that are not designed for this purpose. For example dumbbells, discs (bumper plates excluded) and kettlebells are not designed to be dropped.
- Damage resulting from excessive loading when the product is not designed for this. For instance some bars are suitable for lighter use and cannot bear heavy loads for some exercises. See product description on website for more information.
- Our Crossmaxx® rigs must be bolted to the floor for safe use.

For our full terms and conditions, please visit our website www.lifemaxx.com





Need help?

Do you need help with planning and designing your new personal training zone, weight lifting area, group fitness area or the total planning of a fitness facility or box? Or do you have questions about our products? Our dedicated and experienced team is more than happy to assist you. Please contact us by e-mail or telephone. We also would be delighted to welcome you in our showroom. In our showroom you will have the possibility to try and test all our products.

Couldn't find the product you are looking for? Please visit our website www.lifemaxx.com or our social media pages "LifemaxxFitness" or "CrossmaxxFitness" for the latest product updates or contact us.

T: +31 (0)10 415 98 00

E-mail: info@lifemaxx.com

Sales: sales@lifemaxx.com

Have ideas?

Have you got any innovative product ideas or ideas to make the Lifemaxx assortment even better than it already is? Do not hesitate to contact us, we will be happy to listen to your ideas!

Credits:

We would like to thank the following people and businesses for their contribution to the Lifemaxx catalogue:

- Elsje Corporate Fashion: for helping us creating this catalogue from scratch.
- Robert Stolp Photography
- Sanne Middendorp Make-up Artist
- Our models: Christel, Colin, Rebecca, Mauk, Yaenty, Ralph, Stephanie, Virgil & Hanno

Follow us!

Keep in touch through our social pages and read about our latest updates, innovations, events and client experiences.



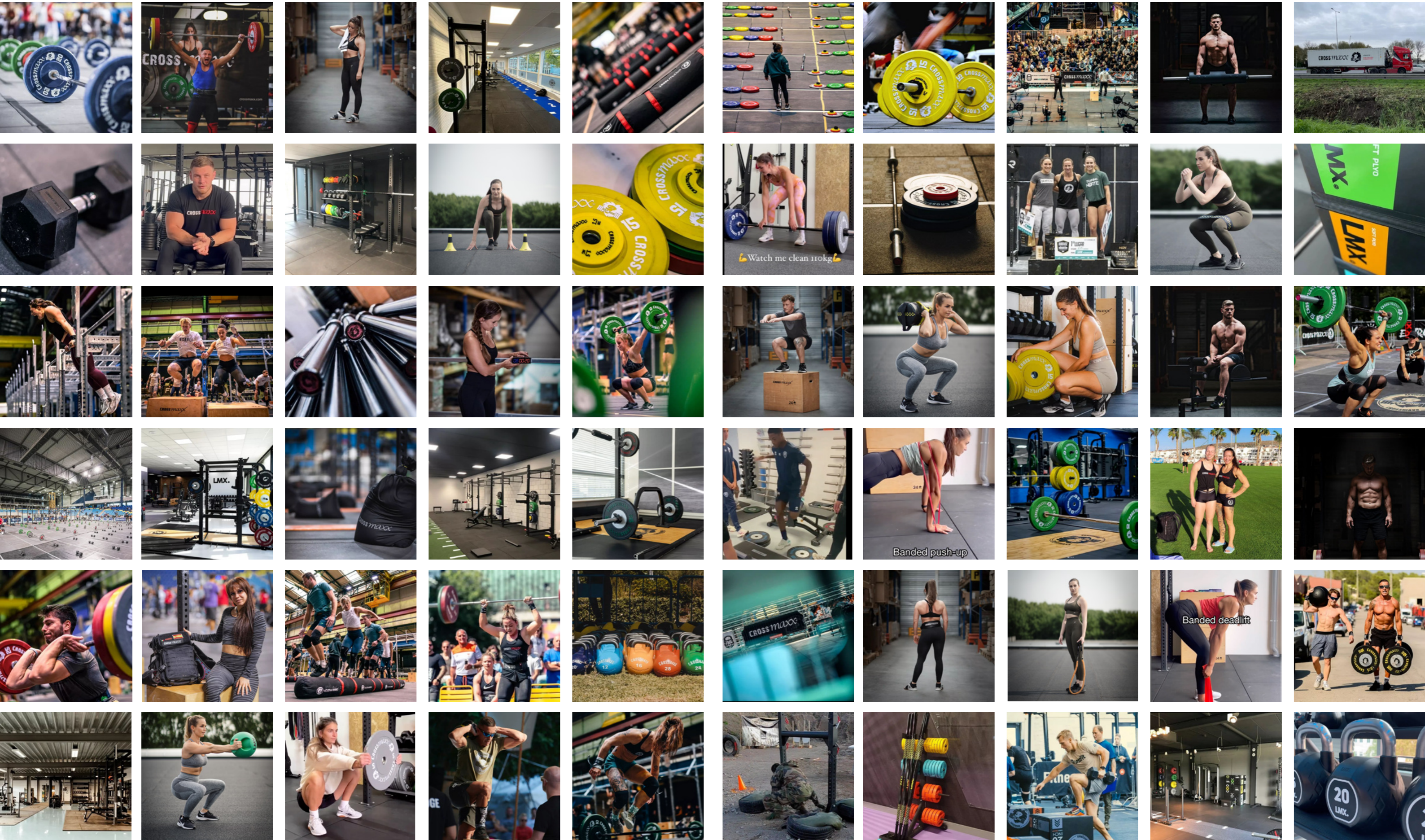
/Lifemaxxfitness
/Crossmaxxfitness



/Lifemaxxfitness



youtube.com
Lifemaxx Fitness



Lifemaxx B.V. | Rotterdam | The Netherlands | info@lifemaxx.com
sales@lifemaxx.com | lifemaxx.com | T +31 (0)10 415 98 00