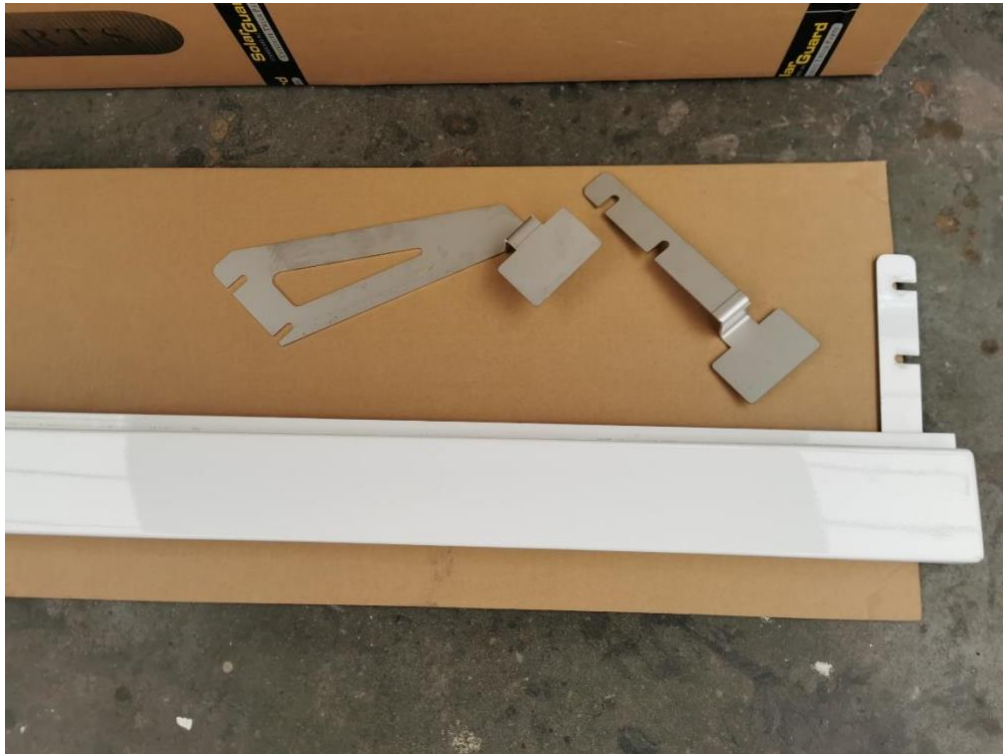


DAF NGD SIDE SKIRT EXTENSION INSTALLATION MANUAL



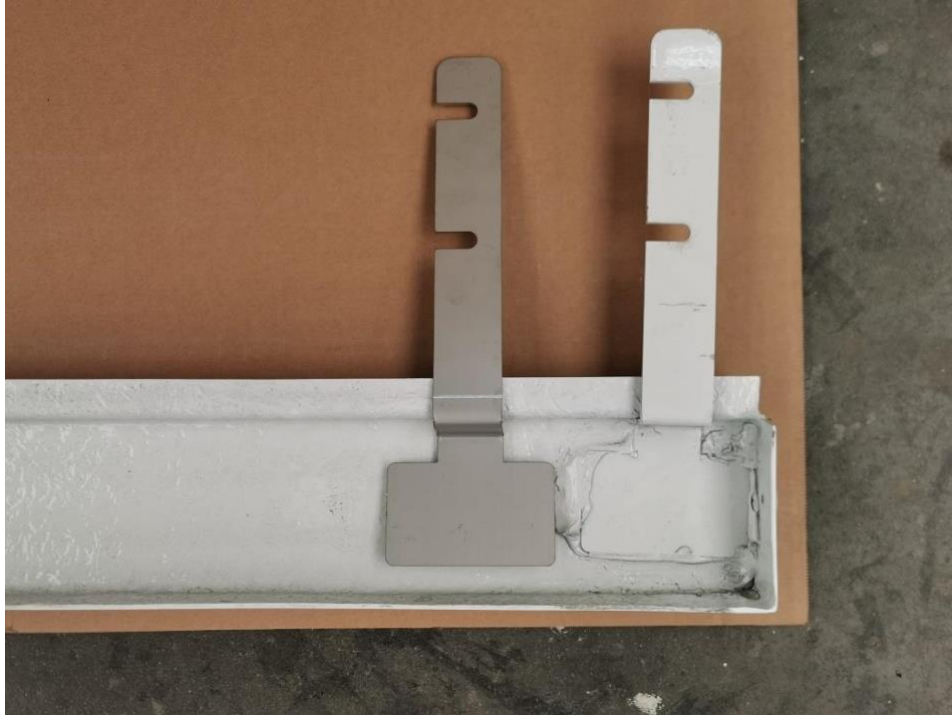




Right Bracket (No lights) Left Bracket (Hella / LED)

Glue the bracket into the sideskirt. The bracket mounts on the original sideskirt mounting points.





Light (Left) bracket is at an angle, to clear the first light (Hella or LED)
Also mounts on the original sideskirt fixtures.





The center bracket. Glue into the side skirt extension. Screw holes to fix it to the original side skirt.

First remove the complete side skirt. Place the side skirt with the inside facing you.

Mount the 3 brackets, left and right on the original fixing points of the side skirt. Middle dead center of the side skirt.

Test fit the side skirt extension on the brackets. Mark the position with a pencil.

Degrease and primer the area that will be glued (side skirt and bracket foot plate)

Position the side skirt extension to perfection, make sure it is aligned with the length of the side skirt.

Use Glue Grips to keep the extension in place and have pressure on the the brackets. Allow plenty of drying time for the glue.

The outer brackets are positioned in between the original lower side skirt brackets (loosen the bolts and slide the SolarGuard bracket in between)

The middle SolarGuard Bracket is screwed into place by using the 7 holes in the bracket.