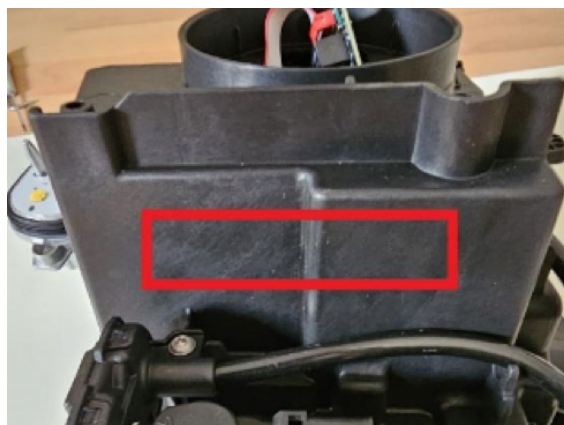
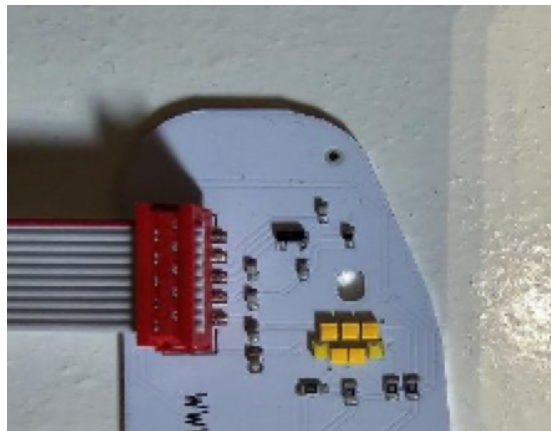
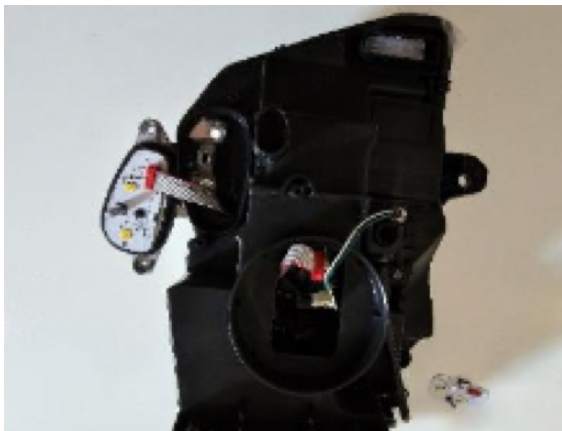
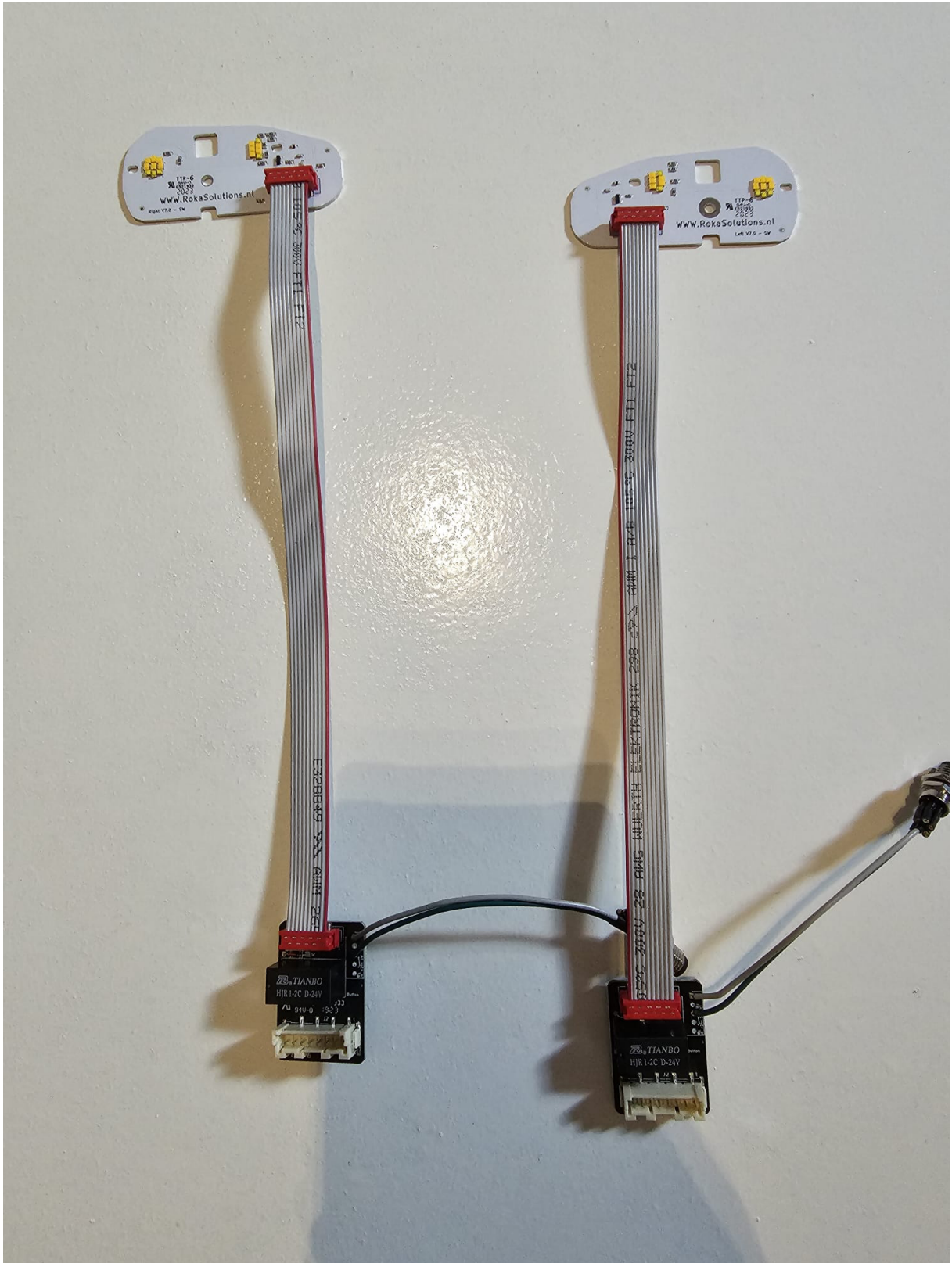




INSTRUCTIONS SWITCHABLE DRL DAF

- Start with disassemble your headlights and the 2 units on the back.
- Replace the original DRL with the new ones with the thermal paste.
- The original connector is going to new switch board.
- And the flat cable to the DRL unit.
- Be sure you mount the flat cable in the right way!
- Make an 8mm hole to fit the connector to the outside of the headlight make sure the inside of the headlight is a flat surface.
- The 4m wire is going to the 106 switch.
- The blue cable is ground.
- The black cable is the switch wire.
- After that, you can put everything back together.





Notice: Plugs can only be installed this way.

