

Manual for Tender - Chocks



VERSACHOCK®

Content

1	Validity, product images.....	3
2	Specifications.....	4
2.1	Tender Chocks	4
2.2	Heavy Duty Tender Chocks.....	4
2.3	Tender Chocks with assist wheels	4
3	Installation.....	4
3.1	Dimensions	4
3.2	Important installation information.....	5
3.3	Positioning	6
3.4	Tie Down Configuration	7
3.5	Size of tender or dinghy related to the yacht.....	7
3.6	Installation Sequence	8
4	Tips for operation.....	9
4.1	Description of base and support bracket	9
4.2	Connection of the support bracket to the base.....	9
4.3	Detach the support bracket from the base	10
5	Additional information, liability	10
5.1	Updates and other tips.....	10
5.2	Liability.....	10
5.3	Acknowledgments.....	10

List of figures

Figure 1	Chocks.....	4
Figure 2	Base bracket.....	4
Figure 3	Side View (mounted)	6
Figure 4	Rear View (mounted)	6
Figure 5	Recommended Tie Down.....	7
Figure 6	Wrong lashing.....	7
Figure 7	Recommended Tender size	7
Figure 8	Wrong Tender size	7
Figure 9	Base	9
Figure 10	Chock Assembly.....	9

List of Tables

Table 1	VersaChock tender chocks.....	3
Table 2	VersaChock tender chocks - Accessories.....	3

1 Validity, product images

This manual is valid for the following VersaChock tender chocks from 1st-Relief:

- Tender Chocks Article number: 1st23VCTENDER
- Heavy Duty Tender Chocks Article number: 1st23VCTENDERHD
- Tender Chocks with assist wheels Article number: 1st23VCTENDERWHL

		
		
		
Tender Chocks ArtNbr: 1st23VCTENDER	Heavy Duty Tender Chocks ArtNbr: 1st23VCTENDERHD	Tender Chocks with assist wheels ArtNbr: 1st23VCTENDERWHL

Table 1 VersaChock tender chocks



		
Outboard Skeg Rest ArtNbr: 1st23VCSKEG	Additional Tie down kit-3 pack ArtNbr: 1st23VCTIEDOWNKIT3	

Table 2 VersaChock tender chocks - Accessories

2 Specifications

2.1 Tender Chocks

- 4 pcs. base brackets - Made with high quality powder coated cast aluminium
- 4 pcs. chocks - Made with high quality powder coated cast aluminium with HDPE bunks
- Bunk size: 1" wide x 9" long x 6" tall
- Capacity: 1250lbs / 570kg (standard model)
- Maximum horizontal force: 500 lbs / 225 kg (optimal tie down configuration may increase this value)
- Compact design stores easily when not in use
- Universal design fits most shapes and sizes of tender/jet skis
- 3 pcs. tie downs/D rings included (required for securing watercraft)
- Twelve 1/4" screws required for installation (not included)
- Exclusive of any other assembly parts

2.2 Heavy Duty Tender Chocks

Same features as VCTENDER plus:

- Double wide bunks for added support (2 " x 6 " x 9 ")

2.3 Tender Chocks with assist wheels

Same features as VCTENDER plus:

- Includes Load assist wheels on 2 bunks

3 Installation

3.1 Dimensions

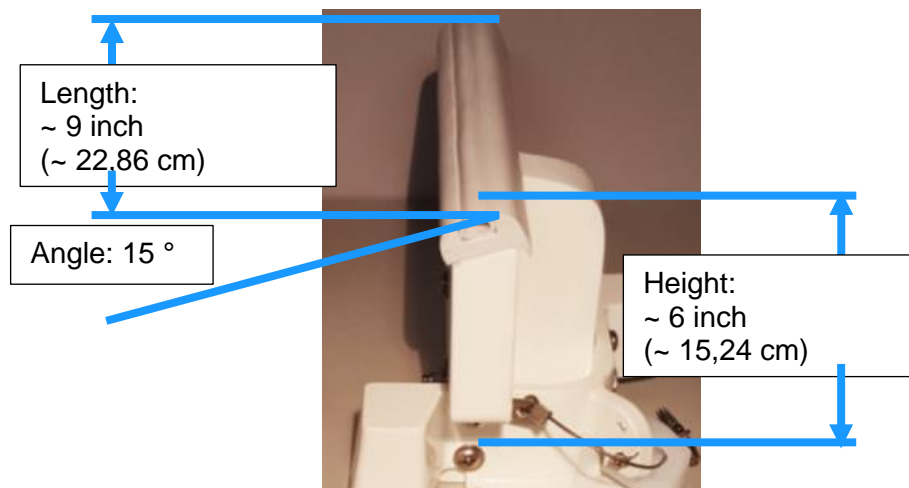


Figure 1 Chocks

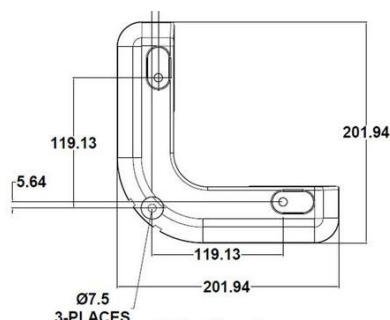


Figure 2 Base bracket

3.2 Important installation information

Please note the following important installation instructions:

- We strongly recommend that the product specification, use and installation be checked by a professional technician before purchase and that the installation is carried out by the same person.
- This manual is for advice only. THERE ARE TOO MANY HULL VARIATIONS IN ORDER TO SPECIFY AN EXACT INSTALLATION OR AN INSTALLATION LOCATION FOR EVERYONE.
- Not intended for use in extreme conditions (i.e.: high forces from water, wind, etc.)
- Tie downs must be installed in order to secure watercraft as described in chapter 3.4.
- Before each use, make sure that the chock assemblies are securely inserted into the base brackets.
- Before each use, make sure that the chock assemblies are firmly fixed with locking screws and that the wing nuts are also tightened.
- Check the hull deadrise and fore aft length from transom to the cutwater radius to help determine the chock locations.
- Forward chocks may need to be spaced narrower to allow watercraft to be slightly angled and allow water to drain, otherwise, excessive weight could result from water collecting inside.
- Check the integrity of the hull, including hull thickness, chine and stringer locations, making sure proper support will be provided.
- Approximately 24 inch side to side outer width of bunks allows for most jet skis and many tenders. Most jet skis have a 22 degree deadrise and have chines at least 24 Inches apart. See drawings in chapter 3.3.
- Check where outboard engine will rest. A skid plate may be needed to protect deck. (Article number 1st23VCSKEG; <https://www.1st-relief.com/en/outboard-skeg-rest.html>).
- Remove the support brackets when not in use.
- Rinse with freshwater after each use, as saltwater and other contaminants can cause staining, even though we use the most corrosion resistant materials.
- FAILURE TO FOLLOW THE ABOVE MAY RESULT IN DAMAGE, LOSS OR SERIOUS INJURY!

3.3 Positioning

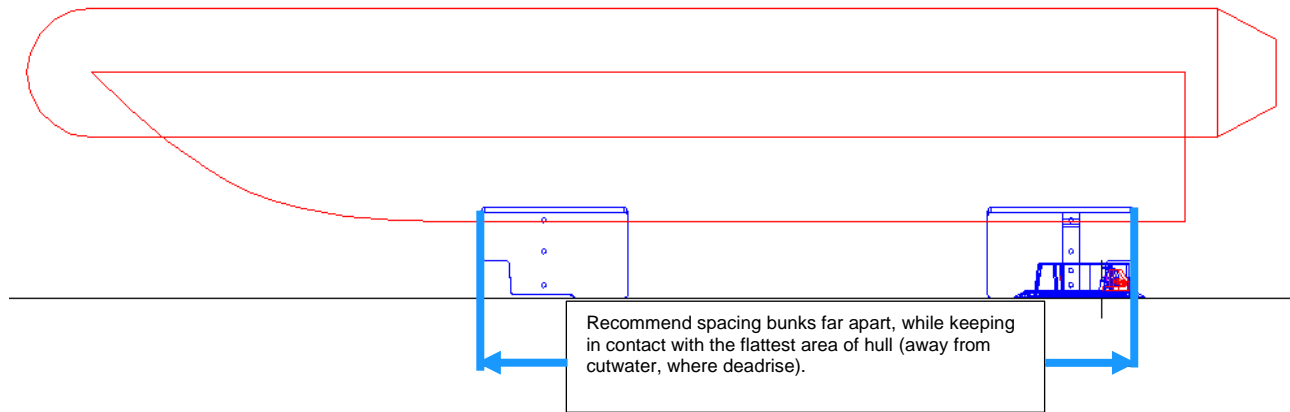


Figure 3 Side View (mounted)

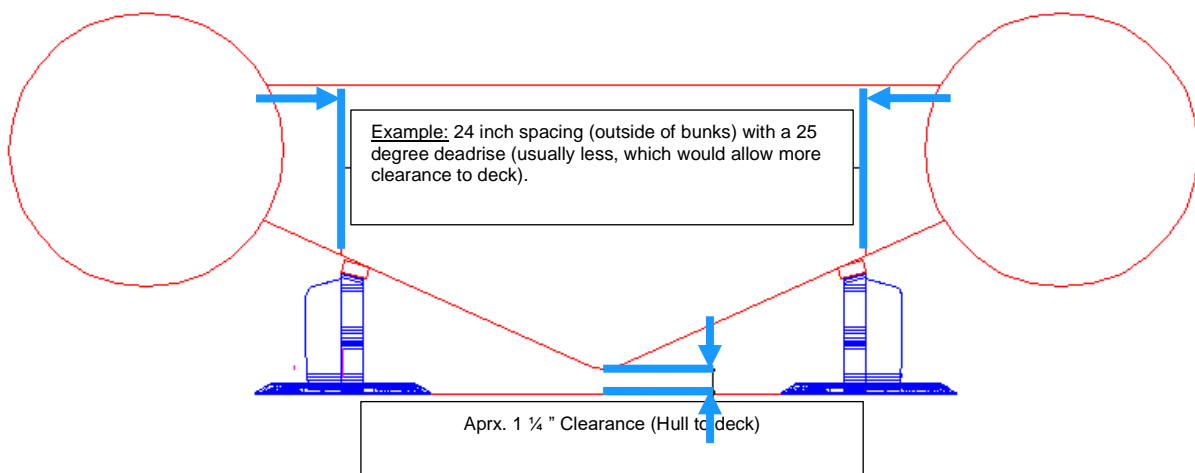


Figure 4 Rear View (mounted)

3.4 Tie Down Configuration

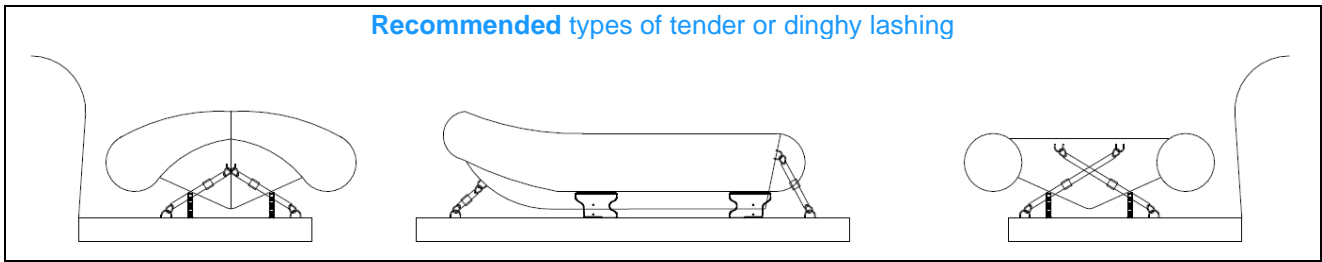


Figure 5 Recommended Tie Down

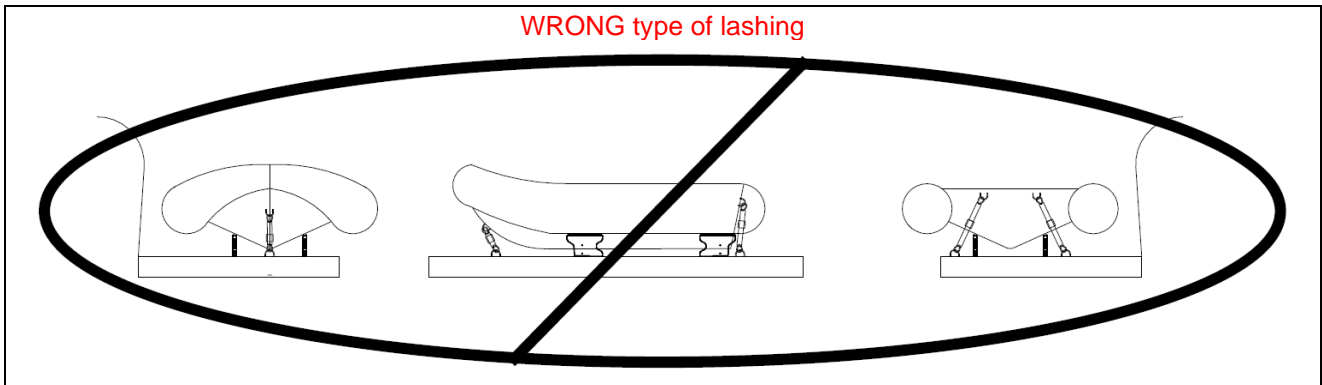


Figure 6 Wrong lashing

3.5 Size of tender or dinghy related to the yacht

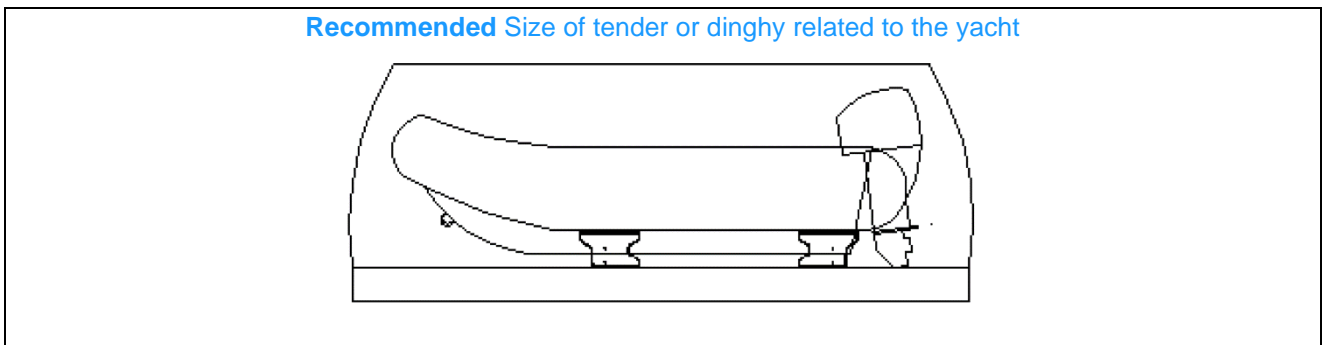


Figure 7 Recommended Tender size

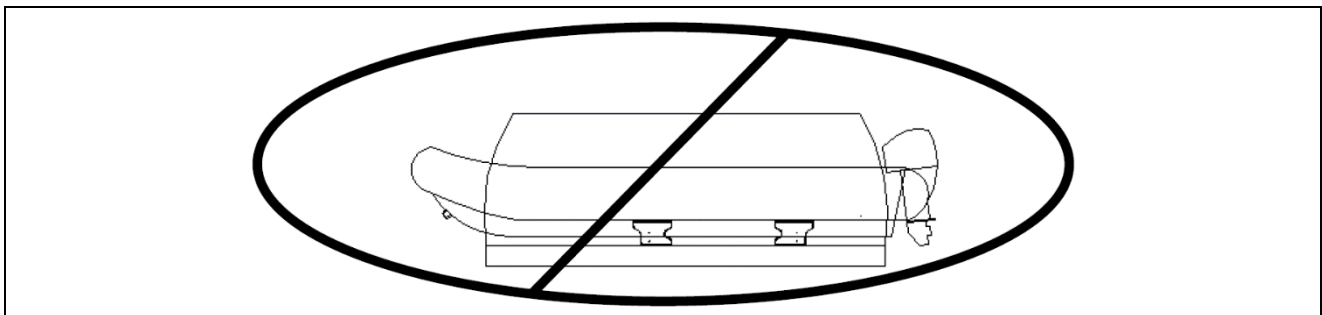


Figure 8 Wrong Tender size

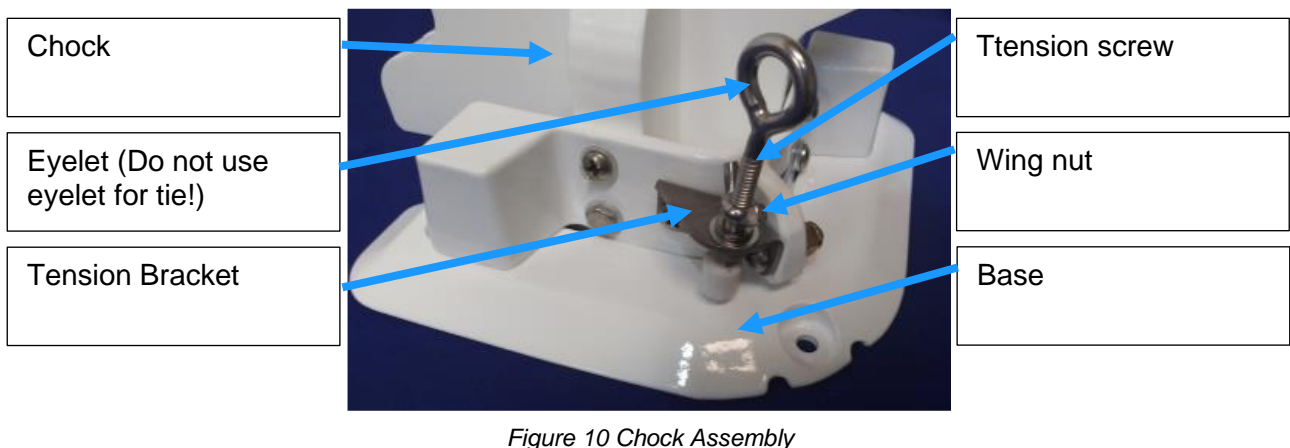
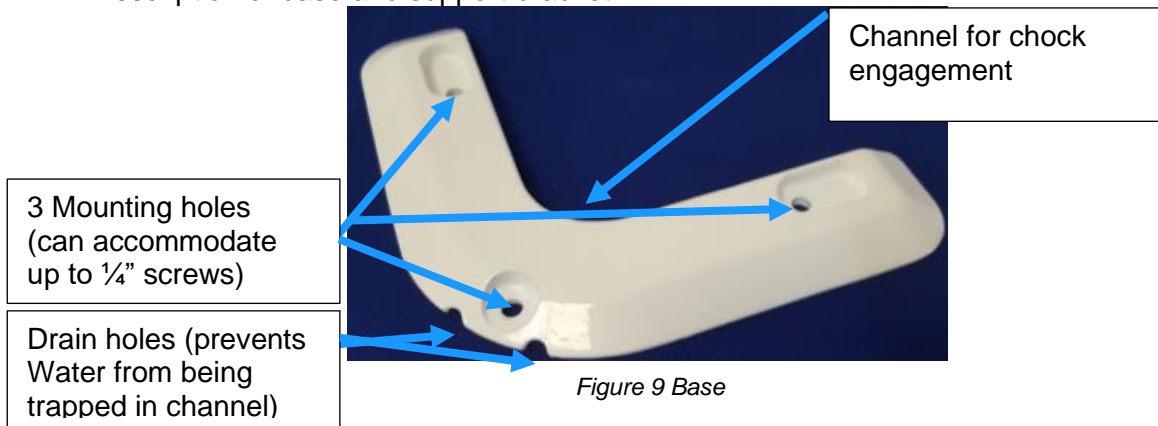
3.6 Installation Sequence

Basic installation sequence:

1. Insert chocks into bases (as described in **Fehler! Verweisquelle konnte nicht gefunden werden.**).
2. Locate chock/base assemblies in approximate location on mounting surface (swim platform, dock, etc.)
3. Carefully locate cargo/watercraft onto chocks, being sure not to rely on the chocks to support the weight.
4. Mark the outermost hole locations of the base brackets on the mounting surface (suggest using a marker or masking tape)
5. Remove the cargo/watercraft and chocks (leaving the base brackets in place)
6. Mark the remaining hole locations.
7. Start by carefully pre-drilling the screws and using the appropriate sealant if necessary!
8. Fasten the base with the screws provided.
9. Complete installation of the base brackets with desired method for application.

4 Tips for operation

4.1 Description of base and support bracket



4.2 Connection of the support bracket to the base



1. Insert Chock tongue into channel in base bracket (be sure chock is fully engaged).



2. Turn tension screw clockwise until chock is snug to base (do not overtighten) Pull on chock to ensure it will not disengage.



3. Tighten wing nut for added security.

Do not use the eyes of the locking screws to fasten the lashing straps!

4.3 Detach the support bracket from the base

To remove the support brackets from the base, do steps 1 to 3 in reverse order.

5 Additional information, liability

5.1 Updates and other tips

For updates and additional tips, see:

<https://www.1st-relief.com/en/equipment-hardware/brackets-davits-load-securing-devices/>

5.2 Liability

Installation and use of this product are at the customer's own risk. We strongly recommend that the product specification, use, and installation be checked by a professional technician prior to purchase and that the installation be carried out by them.

Your safety and customer satisfaction are our top priority!

5.3 Acknowledgments

Thank you for choosing our products. Together with our manufacturer VersaChock, we strive to deliver the most innovative products of the highest quality. VersaChock products are manufactured by Jefferson Design Inc. of Tampa Bay Florida. We hope you will enjoy our products for many years to come. We look forward to your

Comments and feedback!

Your satisfaction is our number one priority! If you have any questions, please contact our customer service office@1st-relief.com