

# BOX SUSPENDED

06-Sep.-2018

## 2.0 | 3.0 LED

LED 6W | 220-240VAC | 50-60Hz | COB 3-step | incl. PS | phase-cut dim

CE IP20 0,3m 36°

### 2.0

200mm

white texture  
aluminium brushed  
copper  
black texture

207164W\_  
207164L\_  
207164P\_  
207164B\_

### 3.0

300mm

white texture  
aluminium brushed  
copper  
black texture

207264W\_  
207264L\_  
207264P\_  
207264B\_

### LIGHT COLOUR

2700K | >90CRI | 420lm

3

3000K | >90CRI | 440lm

5

1800-2850K | >95CRI | 360lm

9

## 2.0 | 3.0 PAR16

max. 35W | GU10 | 100-240VAC | 50-60Hz

CE IP20 0,9m

### 2.0

200mm

white texture  
aluminium brushed  
copper  
black texture

207120W0  
207120L0  
207120P0  
207120B0

### 3.0

300mm

white texture  
aluminium brushed  
copper  
black texture

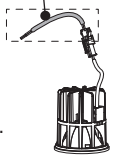
207220W0  
207220L0  
207220P0  
207220B0

### OPTIONAL

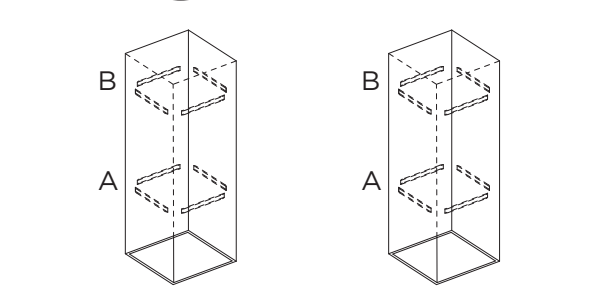
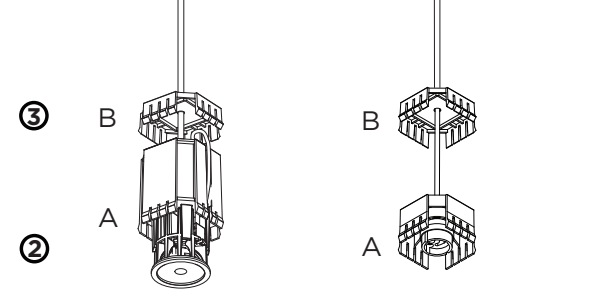
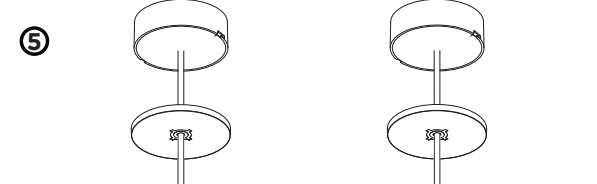
for PAR16 lamps see our catalogue

\* For this product, the cable with a plug that comes with the LED module is not needed. Please remove it first and then use the LED module.

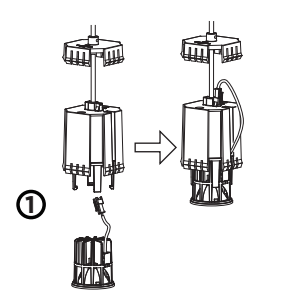
*not needed* (this notification refers to the a part of the cable)



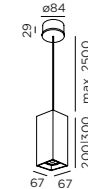
LED PAR16



mount LED module:



## DIMENSIONS

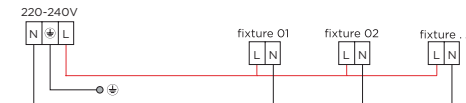


## MOUNTING INSTRUCTION

- ONLY FOR LED: mount the LED module into the suspension set.
- Insert part A until it clicks in the lower part of the cover
- Insert part B until it clicks in the higher part of the cover
- POWER CONNECTION**

Connect wiring to the power supply (for LED) or to terminal block (for PAR16)

### PARALLEL CONNECTION



- Mount the ceiling base on the ceiling  
**(You have to turn the cover counterclockwise a quarter in order to loosen it from the ceiling base and mounting back on is by turning clockwise.)**
- ONLY FOR PAR16  
Insert the lamp

PB19-010-451-00



WEVER & DUCRÉ  
LIGHTING

www.weverducre.com

Wever & Ducré bvba Spinnerijstraat 99/21 8500 Kortrijk

INSTALLATION  
INSTRUCTIONS