

LUNA ROUND

24-Jan.-2018

1.0 LED

LED 7/10W | 350-500mA | 18Vf | COB 3-step | excl. power supply

CE IP44 0.3m

white texture	114381W_
matte chrome	114381M_
black texture	114381B_

LIGHT COLOUR

2700K >90CRI 360-510lm	3
3000K >90CRI 400-540lm	5
1800K-2850K >95CRI 270-370lm	9

ALWAYS USE

for power supplies see our catalogue

1.0 LED HV

LED 7W | 220-240VAC | PCB 3-step | incl. PS | phase-cut dim

CE IP44 0.3m

3000K | >90CRI | 350lm

white texture	114388W5
matte chrome	114388M5
black texture	114388B5

OPTIONAL

for optional dimmers see our catalogue

1.0 PAR16

PAR16 max. 10W | GU10 | 100-240VAC | 50-60Hz

CE IP44 0.9m

white texture	114120W0
matte chrome	114120M0
black texture	114120B0

OPTIONAL

for optional lamps see our catalogue

1.0 MR16

QR-CBC51 max. 10W | GU5.3 | 12V | excl. PS

CE IP44 0.9m

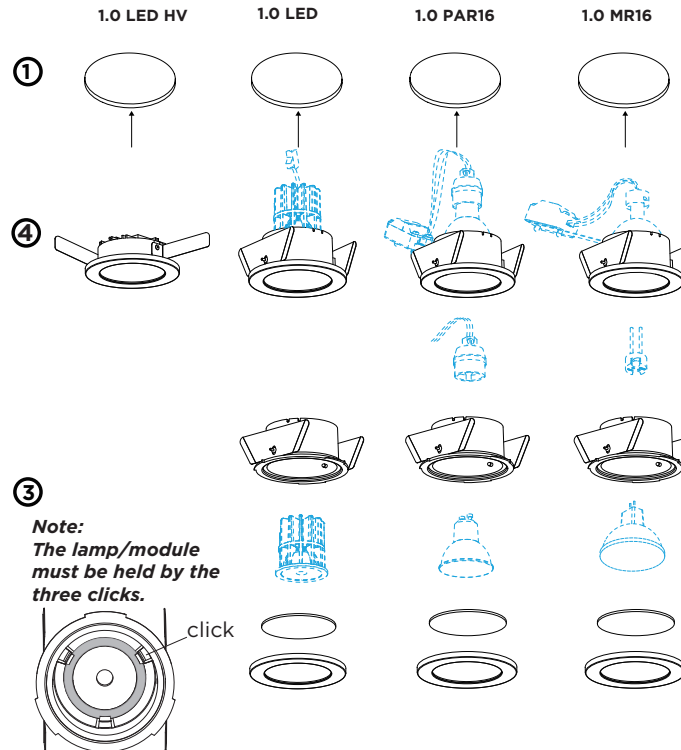
white texture	114110W0
matte chrome	114110M0
black texture	114110B0

ALWAYS USE

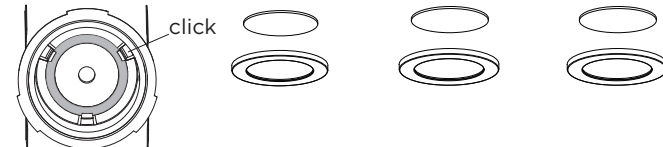
for power supplies see our catalogue

OPTIONAL

plaster kit	90017101
recessed housing	90012026

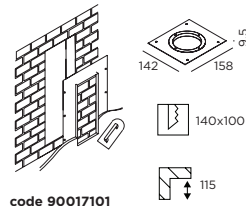


Note:
The lamp/module
must be held by the
three clicks.

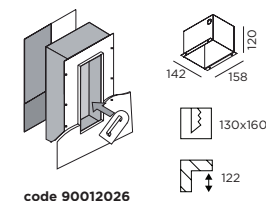


General mounting notice for ceiling / wall with optional plaster kit or recessed

PLASTER KIT
Use into brick walls
or plastered stalon



RECESSED HOUSING
Always use in combination
with plaster kit
Use in concrete structures



DIMENSIONS

1.0 LED HV					
1.0 LED					
1.0 PAR16					
1.0 MR16					

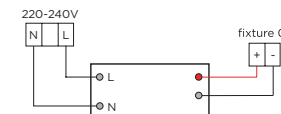
MOUNTING INSTRUCTION

① Make a hole in the ceiling according to the prescribed dimensions.

② POWER CONNECTION

SERIAL CONNECTION - for LED

Always use POWER SUPPLY according to the specifications of the LED-module



PARALLEL CONNECTION - for LED HV, PAR16 & MR16



③ Put the illuminant in the assembled cover.

Note: The lamp/module must be clicked into place.

④ Insert the fixture in the hole

OPTIONAL:

insert with Plaster Kit

or

insert with Plaster Kit and Recessed Housing



Caution, risk of electric shock

The light source of the integrated LED is not replaceable; When the light source reaches its end of life the whole luminaire shall be replaced.



WEVER & DUCRÉ
LIGHTING

www.weverducre.com

Wever & Ducre bvba Kwadestraat 153 bus 2.1 8800 Roeselare

INSTALLATION
INSTRUCTIONS