

# REVER DINING

14-May-2019

**1.0**  
**LED** 2.5W | touch dim | magnetic pole with additional base | rechargeable li-ion battery incl. usb charging | lights for 8 hours | powder coated zink alloy | PMMA | cable 1.5 m

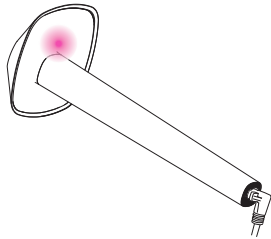
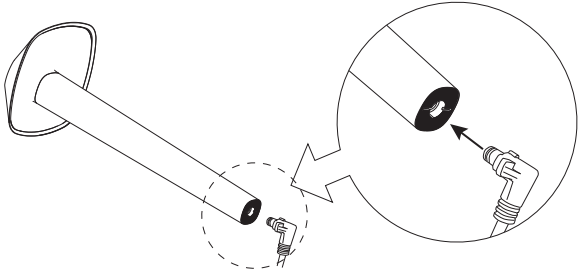
CE IP23 (10.3m)

2700K | 160lm

white texture	655184W2
black texture	655184B2
chrome	655184C2
black chrome	655184N2
light gold	655184G2
pink copper	655184P2

**OPTIONAL**

magnetic flat plate	
white texture	90019163
black texture	90019164
Single charging Tray with magnetic fix	
white texture	90019165
black texture	90019166
chrome	90019171
black chrome	90019172
light gold	90019173
pink copper	90019174
Multiple charger 4 pieces	
black texture	90018007
Refill Battery	
Rechargeable Lithium Battery	73240633



**the Power**

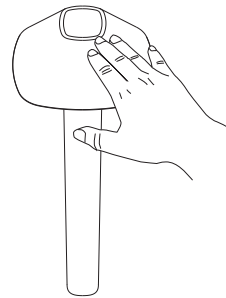
- The luminaire is powered by a built-in lithium battery, 3.7V/4000mA.
- The luminaire is charged with a 5V DC/500mA constant voltage power supply.
- It takes about 10 hours for the luminaire to be fully charged.
- The luminaire can work continuously for 8 hours after a fully charging.
- During the charging process, the luminaire can be used normally
- Charge at least once every three months to maintain battery performance.
- Do not pull out the connector while the battery is charging. This might damage the battery or reduce the lifetime of the battery

**the Indicator Lights**

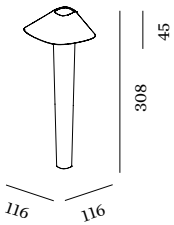
- When it is in charge, the red LED indicator is ON.
- When the charge is full, the red LED indicator goes OFF
- When the voltage of the battery is too low ( lower than 3.3V ), the yellow LED indicator is ON.
- When the battery voltage is below 3.0V, the luminaire goes into sleep mode.
- When the luminaire is in sleep mode, the lamp is not going to be lighted when touching the touch switch. But there will be a yellow LED Indicator Flashing 5 times

**Switch on/off and Dimming**

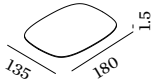
- The touch switch & touch dimmer is the lamp cover's metal top. The user can control the luminaire on/off and dimming by touching it.
- Touch for 3 seconds to turn on the light. (The brightness of the light will be as same as the previous time.)
- After turning on the light, touch for 3 seconds to turn off the light.
- After turning on the light, touch for less than 1 second to shift gears of brightness. The shift sequence according to low - middle - high cycle.



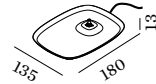
**DIMENSIONS**



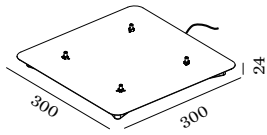
REVER DINING



MAGNETIC FLAT PLATE



SINGLE CHARGING TRAY WITH MAGNETIC FIX

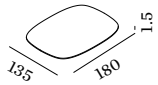


MULTIPLE CHARGER 4 PIECES

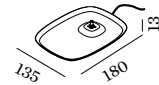
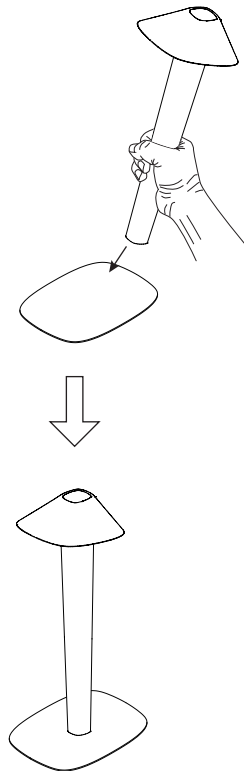
# REVER DINING

## Optional accessories

14-May-2019

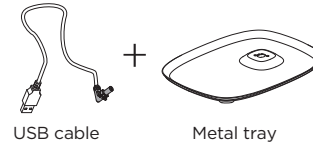


MAGNETIC FLAT PLATE



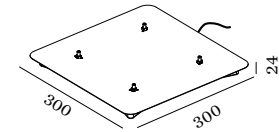
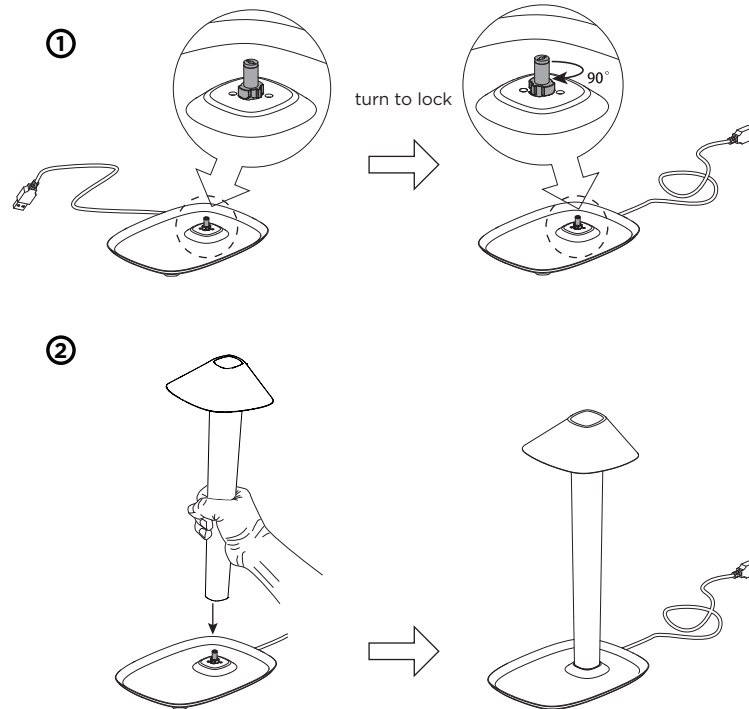
SINGLE CHARGING TRAY WITH MAGNETIC FIX

including:



USB cable

Metal tray



MULTIPLE CHARGER 4 PICES

