

REVER FLOOR 1.0 XS/S

01-Aug.-2017

REVER FLOOR 1.0 XS

LED QA60 max. 12W | E27 | 220-240VAC | 50-60Hz | Dimmable
| Plating steel (C/G/N/P/W/B) | Polycarbonate (TG/SG/CW/AY/HR)

CE IP20

DIFFUSER COLOUR

tea green
smoke grey
champ. white
amber yellow
hip rose

6531ETG_
6531ESG_
6531ECW_
6531EAY_
6531EHR_

REVER FLOOR 1.0 S

LED QA60 max. 12W | E27 | 220-240VAC | 50-60Hz | Dimmable
| Plating steel (C/G/N/P/W/B) | Polycarbonate (TG/SG/CW/AY/HR)

CE IP20

DIFFUSER COLOUR

tea green
smoke grey
champ. white
amber yellow
hip rose

6532ETG_
6532ESG_
6532ECW_
6532EAY_
6532EHR_

TRAY COLOUR

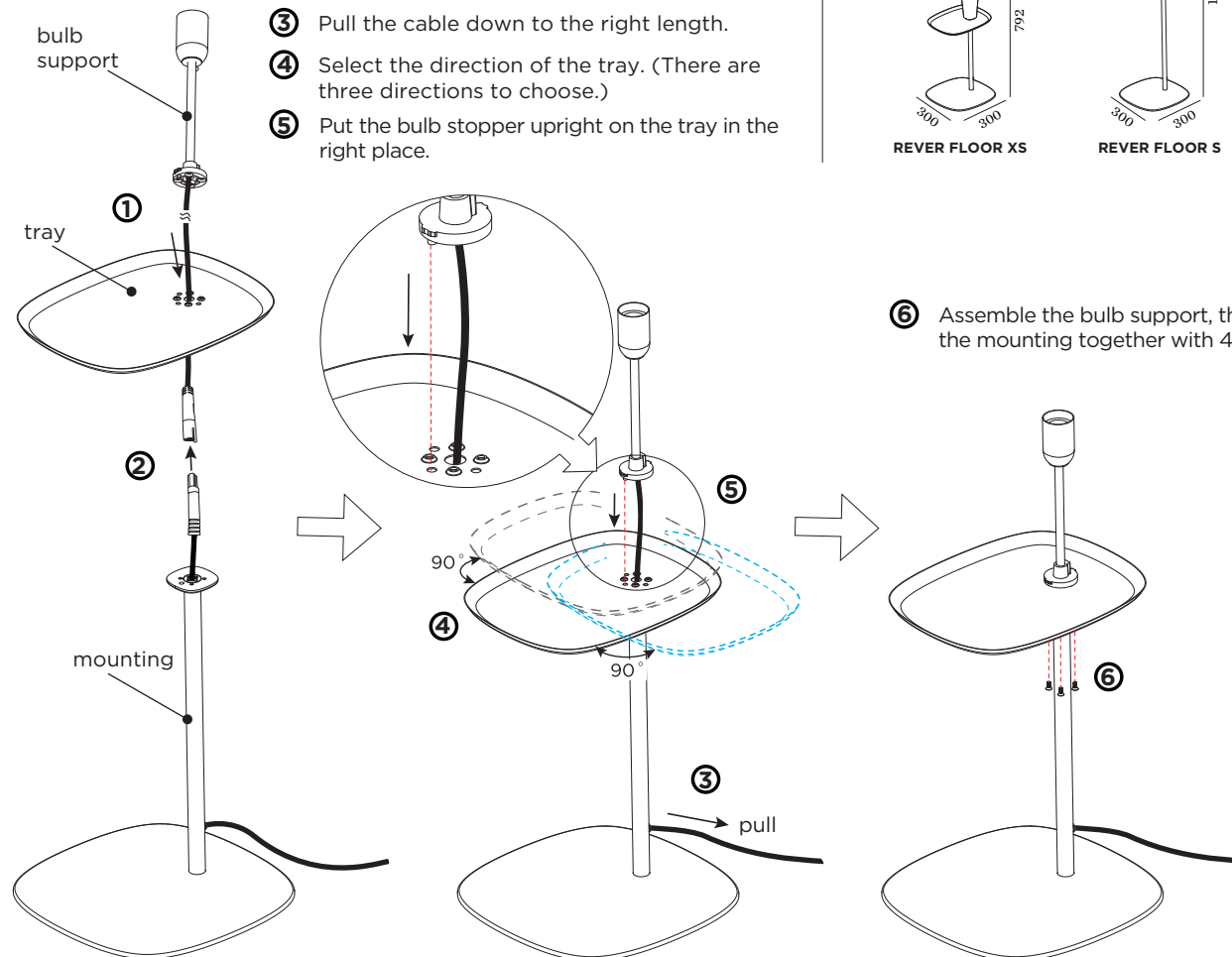
CHROME
BLACK CHROME
LIGHT GOLD
PINK COPPER
WHITE
BLACK

C
N
G
P
W
B

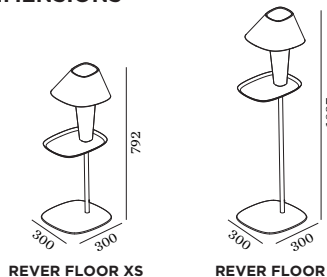
MOUNTING INSTRUCTION

* It takes two people to do the installation.

- Let the cable of the bulb support through the tray.
- Connect the cable plugs.
- Pull the cable down to the right length.
- Select the direction of the tray. (There are three directions to choose.)
- Put the bulb stopper upright on the tray in the right place.



DIMENSIONS



REVER FLOOR XS

REVER FLOOR S

- Assemble the bulb support, the tray & the mounting together with 4 screws.



WEVER & DUCRÉ
LIGHTING

www.weverducre.com

Wever & Ducre bvba Kwadestraat 153 bus 2.1 8800 Roeselare

INSTALLATION
INSTRUCTIONS

PAGE 1/2

REVER FLOOR 1.0 XS/S

01-Aug.-2017

- ⑦ Mount the diffuser.
 - a Use a diffuser to cover the bulb support.
Notice: Keep the grooves of the diffuser aligned with the projecting positions of the pole base.
 - b Then hold the diffuser and clockwise rotating to click.
- ⑧ Fix a bulb into the diffuser, bulb is not included.
Applies only to **LEADING EDGE LED DIMMABLE BULB**.
- ⑨ Connect the power with plug.

