

REVER TABLE 2.0

01-Aug.-2017

REVER TABLE 2.0

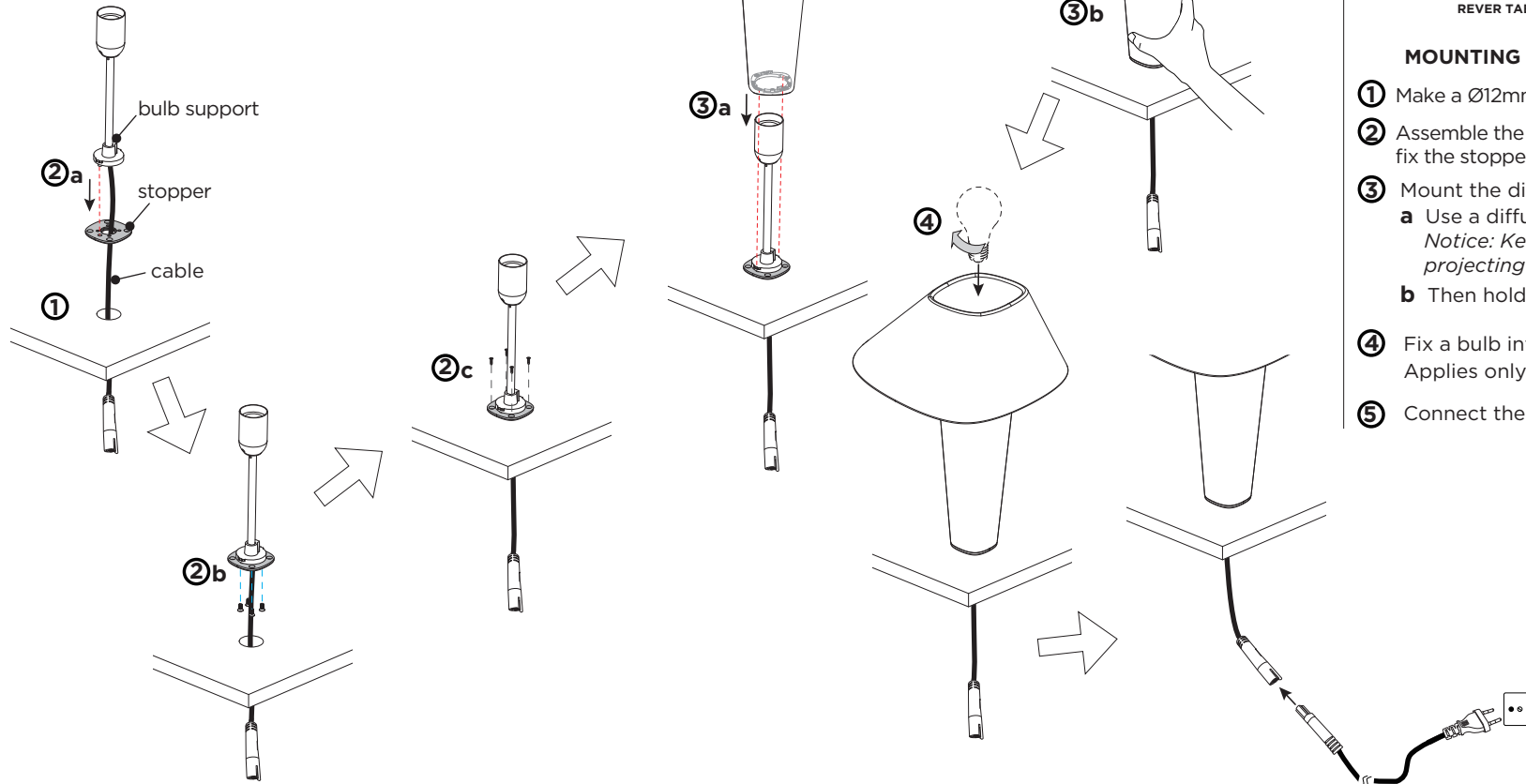
LED QA60 max. 12W | E27 | 220-240VAC | 50-60Hz | Dimmable
| Black cable | Plating steel (C) | Polycarbonate (TG/SG/CW/AY/HR)

CE

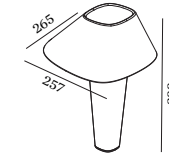
DIFFUSER COLOUR

tea green
smoke grey
champ. white
amber yellow
hip rose

6502ETGC
6502ESGC
6502ECWC
6502EAYC
6502EHRC



DIMENSIONS



Ø12mm

REVER TABLE 2.0

MOUNTING INSTRUCTION

- ① Make a Ø12mm hole in the table.
- ② Assemble the bulb support & the stopper together, and then fix the stopper on the table. (refer to steps: ②a, ②b & ②c)
- ③ Mount the diffuser.
 - a Use a diffuser to cover the bulb support.
Notice: Keep the grooves of the diffuser aligned with the projecting positions of the pole base.
 - b Then hold the diffuser and clockwise rotating to click.
- ④ Fix a bulb into the diffuser, bulb is not included.
Applies only to **LEADING EDGE LED DIMMABLE BULB**.
- ⑤ Connect the power with plugs.



WEVER & DUCRÉ
LIGHTING

www.weverducre.com

Wever & Ducre bvba Kwadestraat 153 bus 2.1 8800 Roeselare

INSTALLATION
INSTRUCTIONS