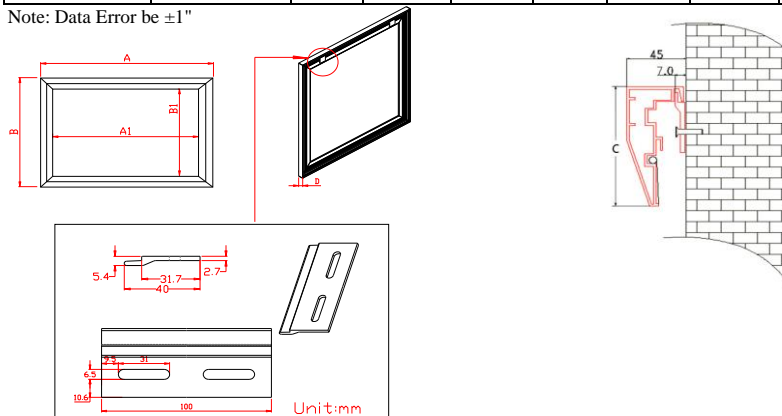


Elite Screens - ezFrame Series Dimension Table

Unit: mm

Model	Screen Diag. & Aspect Ratio	Case L (A)	View W (A1)	Case H (B)	View H (B1)	Frame W (C)	Frame H (D)	N.W (KGS)
R84WH1,-DHD5	84" (16:9)	1980	1860	1166	1046	60	40	10,40
R92WH1,-DHD5	92" (16:9)	2157	2037	1266	1146	60	40	11,00
R100WH1,-DHD5	100"(16:9)	2334	2214	1365	1245	60	40	11,70
R106WH1	106"(16:9)	2467	2347	1440	1320	60	40	12,60
R110WH1,-DHD5	110"(16:9)	2555	2435	1490	1370	60	40	10,10
R120WH1,-DHD5	120"(16:9)	2777	2657	1614	1494	60	40	13,80
R135WH1,-DHD5	135"(16:9)	3110	2990	1800	1680	60	40	16,50
R150WH1,-DHD5	150"(16:9)	3440	3320	1990	1870	60	40	18,27
R165WH1,-DHD5	165"(16:9)	3773	3653	2175	2055	60	40	14,00
R180WH1,-DHD5	180"(16:9)	4105	3985	2362	2242	60	40	21,30
R200WH1, DHD5	200"(16:9)	4550	4430	2610	2490	60	40	23,26
R84WV1	84" (4:3)	1827	1707	1400	1280	60	40	10,60
R100WV1	100"(4:3)	2152	2032	1644	1524	60	40	12,70
R120WV1	120"(4:3)	2560	2440	1950	1830	60	40	15,30
R135WV1	135"(4:3)	2860	2740	2180	2060	60	40	14,32
R150WV1	150"(4:3)	3170	3050	2410	2290	60	40	20,76
R180WV1	180"(4:3)	3778	3658	2863	2743	60	40	22,25
R200WV1	200"(4:3)	4184	4064	3168	3048	60	40	23,00
R85WH1-Wide	85" (2.35:1)	2106	1986	965	845	60	40	9,08
R96WH1-Wide	96" (2.35:1)	2364	2244	1075	955	60	40	10,00
R103WH1-Wide	103"(2.35:1)	2527	2407	1144	1024	60	40	11,22
R115WH1-Wide	115"(2.35:1)	2808	2688	1264	1144	60	40	12,00
R125WH1-Wide	125"(2.35:1)	3041	2921	1365	1245	60	40	13,00
R138WH1-Wide	138"(2.35:1)	3345	3225	1490	1370	60	40	14,48
R158WH1-Wide	158"(2.35:1)	3813	3693	1691	1571	60	40	11,80
R166WH1-Wide	166"(2.35:1)	4000	3880	1771	1651	60	40	19,30
R109WX1	109"(16:10)	2468	2348	1587	1467	60	40	14,80
R128WX1	128"(16:10)	2877	2757	1843	1723	60	40	14,10
R142WX1	142"(16:10)	3221	3101	2059	1939	60	40	19,20
R155WX1	155"(16:10)	3459	3339	2207	2087	60	40	17,60
Unit: Inch	Screen Diag. & Aspect Ratio	Case L (A)	View W (A1)	Case H (B)	View H (B1)	Frame W (C)	Frame H (D)	N.W (lbS)
R84WH1,-DHD5	84" (16:9)	78,0	73,2	45,9	41,2	2,4	1,6	22,93
R92WH1,-DHD5	92" (16:9)	84,9	80,2	49,8	45,1	2,4	1,6	24,25
R100WH1,-DHD5	100"(16:9)	91,9	87,2	53,7	49,0	2,4	1,6	25,79
R106WH1	106"(16:9)	97,1	92,4	56,7	52,0	2,4	1,6	27,78
R110WH1,-DHD5	110"(16:9)	100,6	95,9	58,7	53,9	2,4	1,6	22,27
R120WH1,-DHD5	120"(16:9)	109,3	104,6	63,5	58,8	2,4	1,6	30,42
R135WH1,-DHD5	135"(16:9)	122,4	117,7	70,9	66,1	2,4	1,6	36,38
R150WH1,-DHD5	150"(16:9)	135,4	130,7	78,3	73,6	2,4	1,6	40,28
R165WH1,-DHD5	165"(16:9)	148,5	143,8	85,6	80,9	2,4	1,6	30,86
R180WH1,-DHD5	180"(16:9)	161,6	156,9	93,0	88,3	2,4	1,6	46,96
R200WH1, DHD5	200"(16:9)	179,1	174,4	102,8	98,0	2,4	1,6	51,28
R84WV1	84" (4:3)	71,9	67,2	55,1	50,4	2,4	1,6	23,37
R100WV1	100"(4:3)	84,7	80,0	64,7	60,0	2,4	1,6	28,00
R120WV1	120"(4:3)	100,8	96,1	76,8	72,0	2,4	1,6	33,73
R135WV1	135"(4:3)	112,6	107,9	85,8	81,1	2,4	1,6	31,57
R150WV1	150"(4:3)	124,8	120,1	94,9	90,2	2,4	1,6	45,77
R180WV1	180"(4:3)	148,7	144,0	112,7	108,0	2,4	1,6	49,05
R200WV1	200"(4:3)	164,7	160,0	124,7	120,0	2,4	1,6	50,71
R85WH1-Wide	85" (2.35:1)	82,9	78,2	38,0	33,3	2,4	1,6	20,02
R96WH1-Wide	96" (2.35:1)	93,1	88,3	42,3	37,6	2,4	1,6	22,05
R103WH1-Wide	103"(2.35:1)	99,5	94,8	45,0	40,3	2,4	1,6	24,74
R115WH1-Wide	115"(2.35:1)	110,6	105,8	49,8	45,0	2,4	1,6	26,46
R125WH1-Wide	125"(2.35:1)	119,7	115,0	53,7	49,0	2,4	1,6	28,66
R138WH1-Wide	138"(2.35:1)	131,7	127,0	58,7	53,9	2,4	1,6	31,92
R158WH1-Wide	158"(2.35:1)	150,1	145,4	66,6	61,9	2,4	1,6	26,01
R166WH1-Wide	166"(2.35:1)	157,5	152,8	69,7	65,0	2,4	1,6	42,55
R109WX1	109"(16:10)	97,2	92,4	62,5	57,8	2,4	1,6	32,63
R128WX1	128"(16:10)	113,3	108,5	72,6	67,8	2,4	1,6	31,09
R142WX1	142"(16:10)	126,8	122,1	81,1	76,3	2,4	1,6	42,33
R155WX1	155"(16:10)	136,2	131,5	86,9	82,2	2,4	1,6	38,80

Note: Data Error be ±1"





2017 ezFrame Series Product Brochure

The ezFrame series offers several screen materials models



ezFrame Series

The ezFrame series offers several screen materials models



Award winning Home Theater Screen with full tension uniformity

Screen Material:

- Active 3D and 4K Ultra HD Ready on Cinewhite™, CineGrey, and AcousticPro A1080P3 materials
- Award winning Home Theater Screen with full tension uniformity
- Available in the following range of diagonal sizes:
 - 84" - 180" in 4:3 format
 - 84" - 200" in 16:9 format

Design and Installation:

- Anodized black aluminum frame with black velour surfacing to enhance the appearance with the stylish masked border that absorbs projector light overshoot
- Easy to assemble and install in minutes
- Sliding wall mounts ensure the installation is properly centered

Quality and Reliability:

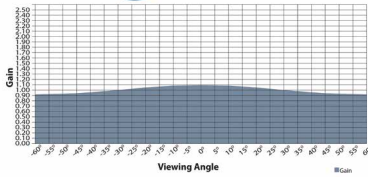
- 2-year Parts & Labor manufacturer's warranty
- 3-year warranty offered through ENR-G program (Education, Non-Profit, Religious and Government)



Choose from CineWhite™, CineGrey, and AcousticPro1080P3.



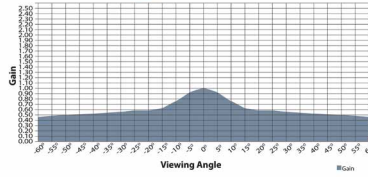
On axis 0° Gain: 1.1
Viewing Cone: 180°



CineWhite™ Tension Screen Material has a wide viewing Angle in 1.1 Gain, suitable for most applications including commercial and home theater presentations.



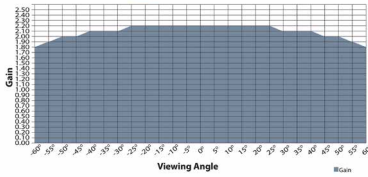
On axis 0° Gain: 1.0
Viewing Cone: 160°



CineGrey Tension Screen Material is best for those using low contrast ratio (LCD) projectors in a home theater environment and need to improve picture black levels.



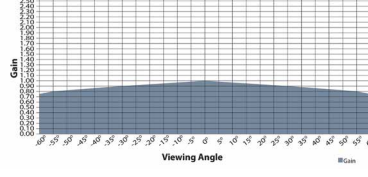
On axis 0° Gain: 2.2
Viewing Cone: 160°



WraithVeil Elite's rear projection screen material comes in 2.2 high gain to be used in ambient light environments, such as tradeshow, meeting rooms, and outside evening presentations. Its special surface coating enhances color reproduction and black level reproduction with wide diffusion for multiple applications.



On axis 0° Gain: 1.0
Viewing Cone: 180°

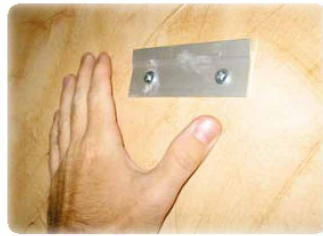


AcousticPro1080P3 is an acoustically transparent front projection material. The angular weave eliminates the moire effect while presenting warm neutral colors for today's high definition 1080P (1920x1080) projectors. This material allows speaker placement behind while allowing an exceptional acoustically transparent performance.



Easily attached Frame Tension System, allows perfect tension uniformity with a simple procedure. Standard Black Backed Screen Material prevents light penetration for superior color reproduction.

(Not available on all material)



The aluminum Sliding Wall Brackets provide the installer with a simple solution to screen installation and adjustable horizontal centering.



Standard 2.36" Black Velvet Surfaced Frame enhances the perceived brightness of the projection image with superior contrast and color reproduction for sharper picture quality. Wide-Borders also absorb light overshoot to professionally matte your presentation.



"I found that it had a decent reflectivity to it, but didn't suffer too much from hot spotting (which obviously you would expect from a lower gain screen), nor did it have any sparkles or other anomalies to it. Elite certainly has a good idea here. Good performance, good build quality, and good features in a screen, for a lower price point."

AV Science, NY

By comparison, the Firehawk® screen tends to reject ambient light from the side, a little better than the ezFrame by Elite. (All's fair - an equivalent Firehawk fixed wall projector screen is much over but yellows did appear just a touch stronger than on the Firehawk®. This was very close and not an issue. Overall color was very good. With a 100" 16:9 Elite ezFrame screen selling for about half of a Da-Lite Cinema Contour with ProTrim (their fancy velourish border), and barely a 1/3 of a Stewart Luxus Deluxe, it allows home theater people to own an attractive looking fixed wall screen, with good performance, at a price that simply isn't available from the larger established brands.

Art Feierman / Projectorreviews.com

ezFrame Series

Model	Screen Diag. & Aspect Ratio	View Height-Chord (in)	View Width-Chord (in)	View Height (cm)	View Width (cm)	N.W. (lbs.)	G.W. (lbs.)	N.W. (kgs)	G.W. (Kgs)	Packaging Dimensions (LxHxW)	Gain	Screen Material
R84WV1	84" (4:3)	50.0	67.0	127.0	170.2	23.4	34.8	10.6	15.8	59.4"x4.6"x12.5"	1.1	CineWhite™
R92WV1	92"(4:3)	55.2	73.6	140.2	186.9	26.0	38.0	11.8	17.3	64.21"x4.76"x12.52"	1.1	CineWhite™
R100WV1	100"(4:3)	60.0	80.0	152.4	203.2	27.9	38.4	12.7	17.5	69.1"x4.6"x 12.5"	1.1	CineWhite™
R120WV1	120"(4:3)	67.7	98.6	172.0	250.4	33.2	42.3	15.1	19.2	81.1"x4.6"x12.5"	1.1	CineWhite™
R135WV1	135"(4:3)	81.0	108.0	205.7	274.3	37.5	54.3	17.0	24.7	90.2"x4.6"x12.5"	1.1	CineWhite™
R150WV1	150"(4:3)	90.0	120.0	228.6	304.8	45.8	59.0	20.8	26.8	99.2"x4.6"x12.5"	1.1	CineWhite™
R200WV1	200"(4:3)	120.0	160.0	304.8	406.4	50.7	71.7	23.1	32.6	129"x4.6"x12.5"	1.1	CineWhite™
R92WH1	92"(16:9)	45.0	79.9	114.3	202.9	24.3	32.0	11.0	14.5	54.7"x4.6"x12.5"	1.1	CineWhite™
R100WH1	100" (16:9)	49.0	87.0	124.5	221.0	25.8	36.4	11.7	16.5	58"x4.6"x12.5"	1.1	CineWhite™
R106WH1	106" (16:9)	51.9	92.2	131.8	234.2	27.8	37.5	12.6	17.0	61"x4.6"x12.5"	1.1	CineWhite™
R110WH1	110" (16:9)	54.0	96.0	137.2	243.8	28.7	38.6	13.0	17.5	63"x4.6"x12.5"	1.1	CineWhite™
R120RH1	120"(16:9)	59.0	104.7	167.6	297.2	30.5	44.0	13.9	20.0	68"x4.6"x12.5"	2.2	WraithVeil
R84WH1-A1080P3	84"(16:9)	41.1	73.0	104.4	185.4	22.9	28.9	10.4	13.1	50.5"x4.6"x12.5"	1.0	AcousticPro1080P3
R92WH1-A1080P3	92"(16:9)	45.0	79.9	124.0	221.0	24.3	32.0	11.0	14.5	54.7"x4.6"x12.5"	1.0	AcousticPro1080P3
R100WH1-A1080P3	100"(16:9)	49.0	87.0	124.5	221.0	25.8	36.4	11.7	16.5	58"x4.6"x12.5"	1.0	AcousticPro1080P3
R110WH1-A1080P3	110"(16:9)	54.0	96.0	137.2	243.8	28.7	40.8	13.0	18.5	65"x4.6"x12.5"	1.0	AcousticPro1080P3
R120WH1-A1080P3	120"(16:9)	58.9	104.7	149.1	265.9	30.5	40.8	13.8	20.0	68"x4.6"x12.5"	1.0	AcousticPro1080P3
R135WH1-A1080P3	135"(16:9)	66.2	117.7	167.6	297.2	36.4	45.2	16.5	22.5	75.6"x4.6"x12.5"	1.0	AcousticPro1080P3
R150WH1-A1080P3	150"(16:9)	73.6	130.7	186.9	332.0	42.8	55.9	18.5	25.5	82.8"x4.6"x12.5"	1.0	AcousticPro1080P3

ezFrame Dimensions Table

Model	Screen Diag. & Aspect Ratio	Overall Width (A)	View Width (A1)	Overall Height (B)	View Height (B1)	Frame Width (C)	Frame Thickness (D)
R84WV1	84" (4:3)	1826	1707	1400	1280	61	41
R92WV1	92"(4:3)	1989	1869	1521	1402	61	41
R100WV1	100"(4:3)	2149	2029	1641	1519	61	41
R120WV1	120"(4:3)	2621	2504	1839	1720	61	41
R135WV1	135"(4:3)	2860	2741	2179	2060	61	41
R150WV1	150"(4:3)	3170	3051	2410	2291	61	41
R200WV1	200"(4:3)	4183	4064	3167	3048	61	41
R92WH1	92"(16:9)	2149	2029	1270	1151	61	41
R100WH1	100" (16:9)	2329	2210	1359	1240	61	41
R106WH1	106" (16:9)	2461	2342	1440	1321	61	41
R110WH1	110" (16:9)	2555	2436	1491	1369	61	41
R120RH1	120"(16:9)	2779	2659	1610	1491	61	41
R84WH1-A1080P3	84"(16:9)	1981	1862	1171	1052	61	41
R92WH1-A1080P3	92"(16:9)	2149	2029	1270	1151	61	41
R100WH1-A1080P3	100"(16:9)	2329	2210	1359	1240	61	41
R110WH1-A1080P3	110"(16:9)	2555	2436	1491	1369	61	41
R120WH1-A1080P3	120"(16:9)	2779	2659	1610	1491	61	41
R135WH1-A1080P3	135"(16:9)	3109	2990	1801	1679	61	41
R150WH1-A1080P3	150"(16:9)	3439	3320	1989	1869	61	41

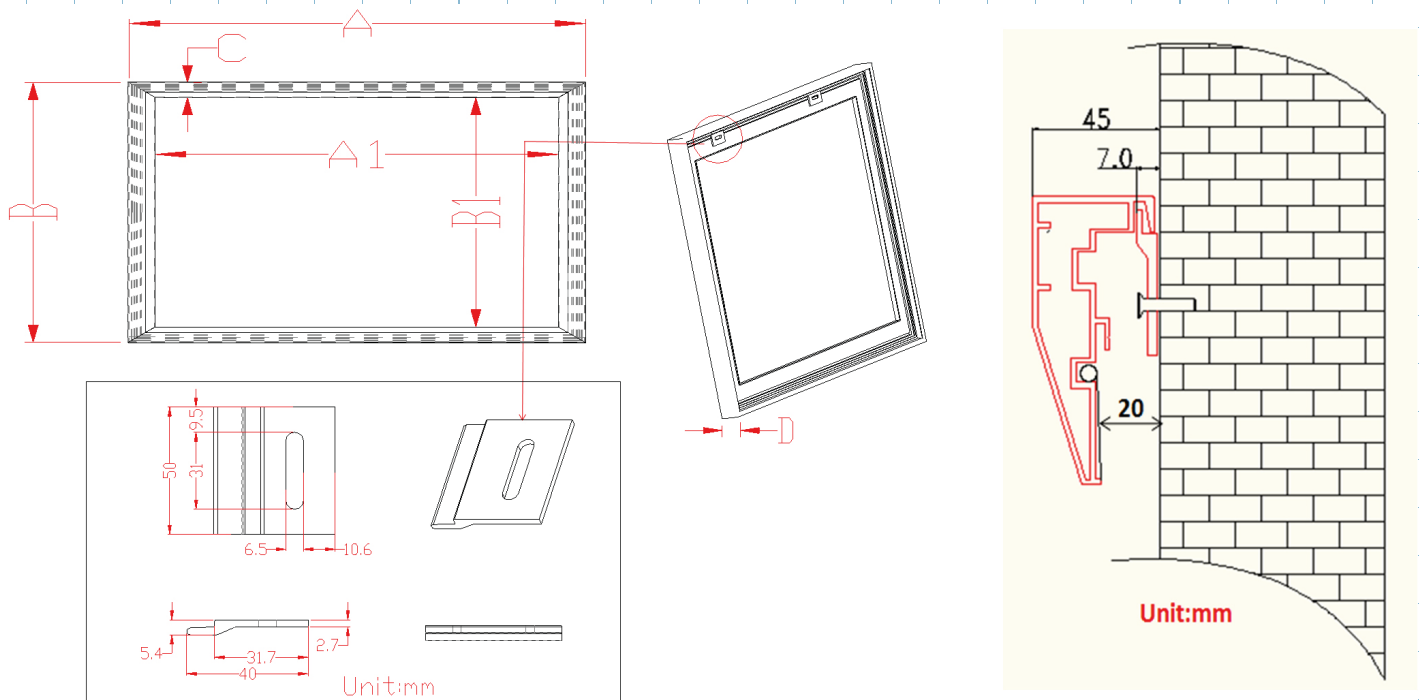
Unit: mm

ezFrame Dimensions Table

Model	Screen Diag. & Aspect Ratio	Overall Width (A)	View Width (A1)	Overall Height (B)	View Height (B1)	Frame Width (C)	Frame Thickness (D)
R84WV1	84" (4:3)	71.9	67.2	55.1	50.4	2.4	1.6
R92WV1	92"(4:3)	78.3	73.6	59.9	55.2	2.4	1.6
R100WV1	100"(4:3)	84.6	79.9	64.6	59.8	2.4	1.6
R120WV1	120"(4:3)	103.2	98.6	72.4	67.7	2.4	1.6
R135WV1	135"(4:3)	112.6	107.9	85.8	81.1	2.4	1.6
R150WV1	150"(4:3)	124.8	120.1	94.9	90.2	2.4	1.6
R200WV1	200"(4:3)	164.7	160.0	124.7	120.0	2.4	1.6
R92WH1	92"(16:9)	84.6	79.9	50.0	45.3	2.4	1.6
R100WH1	100"(16:9)	91.7	87.0	53.5	48.8	2.4	1.6
R106WH1	106"(16:9)	96.9	92.2	56.7	52.0	2.4	1.6
R110WH1	110"(16:9)	100.6	95.9	58.7	53.9	2.4	1.6
R120RH1	120"(16:9)	109.4	104.7	63.4	58.7	2.4	1.6
R84WH1-A1080P3	84"(16:9)	75.9	71.2	49.2	44.5	2.4	1.6
R92WH1-A1080P3	92"(16:9)	84.6	79.9	50.0	45.3	2.4	1.6
R100WH1-A1080P3	100"(16:9)	91.7	87.0	53.5	48.8	2.4	1.6
R110WH1-A1080P3	110"(16:9)	100.6	95.9	58.7	53.9	2.4	1.6
R120WH1-A1080P3	120"(16:9)	109.4	104.7	63.4	58.7	2.4	1.6
R135WH1-A1080P3	135"(16:9)	122.4	117.7	70.9	66.1	2.4	1.6
R150WH1-A1080P3	150"(16:9)	135.4	130.7	78.3	73.6	2.4	1.6

Unit: inch

The listed measurements are for general reference only. Please contact Elite Screens to verify product design and dimensions before attempting to integrate its products with any structural or furniture modification. Although a manufacturer may offer product advice, it may be taken or disregarded at the integrator's discretion. Elite Screens will not be held responsible or be otherwise liable for faulty installations.





ELITE SCREENS

ezFrame & Sable Frame Series

Fixed Frame Projection Screen

User's Guide

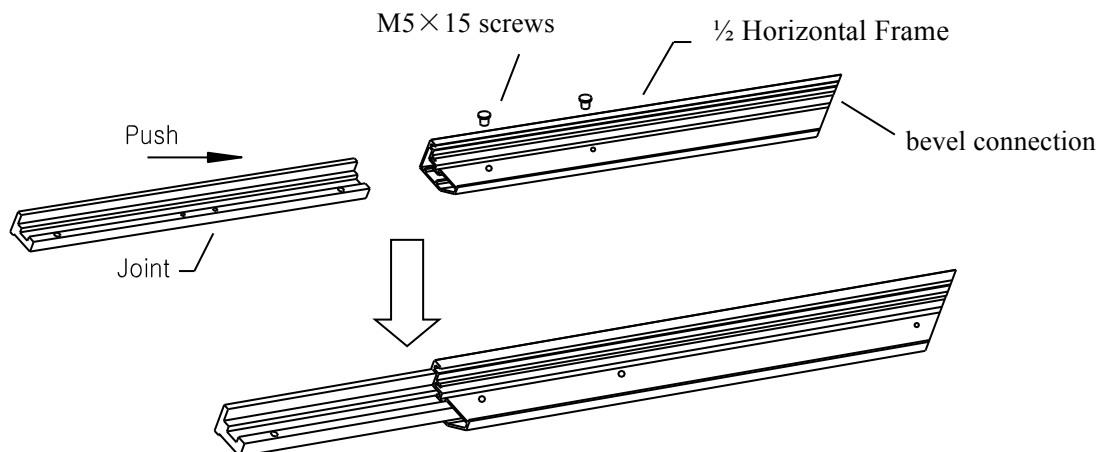
Hardware and Parts List

1. Frame Parts x 6 pcs (4 top/bottom horizontal frame pcs + 2 side vertical frame pcs)
2. Tension Rods x 6 pcs (4 top/bottom rods + 2 side rods)
3. Screen Material x 1 pc
4. Center joints x 2 pcs
5. Elbow Joints x 4 pcs
6. Wall brackets x 2 – 3 pcs (depending on model/size)
7. M5x50 wood screws x 6 pcs
8. Hollow wall anchor x 6 pcs
9. M5x15 screws x 16 pcs
10. Center Support Bar x 1 – 2 pcs (depending on model/size)
11. Support joiner x 2 – 4 pcs (depending on model/size)
12. Fix Plates x 60 – 180 pcs (depending on model/size)

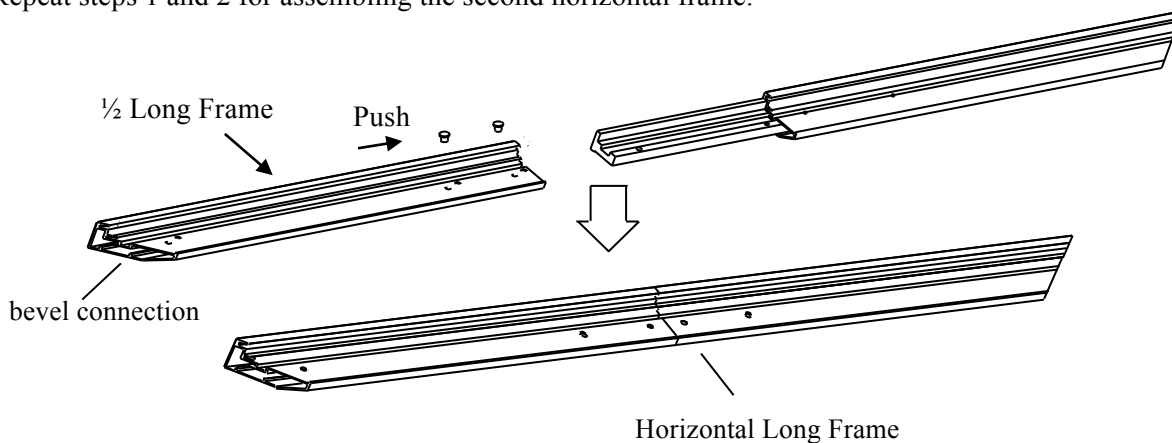
Note: Please make sure all parts are included in your package before proceeding to assemble your Elite Screens fixed frame projection screen.

FRAME ASSEMBLY

1. Insert the **center joint** connector into to one of the 1/2 horizontal frames and fasten it with two **M5x15 screws**.



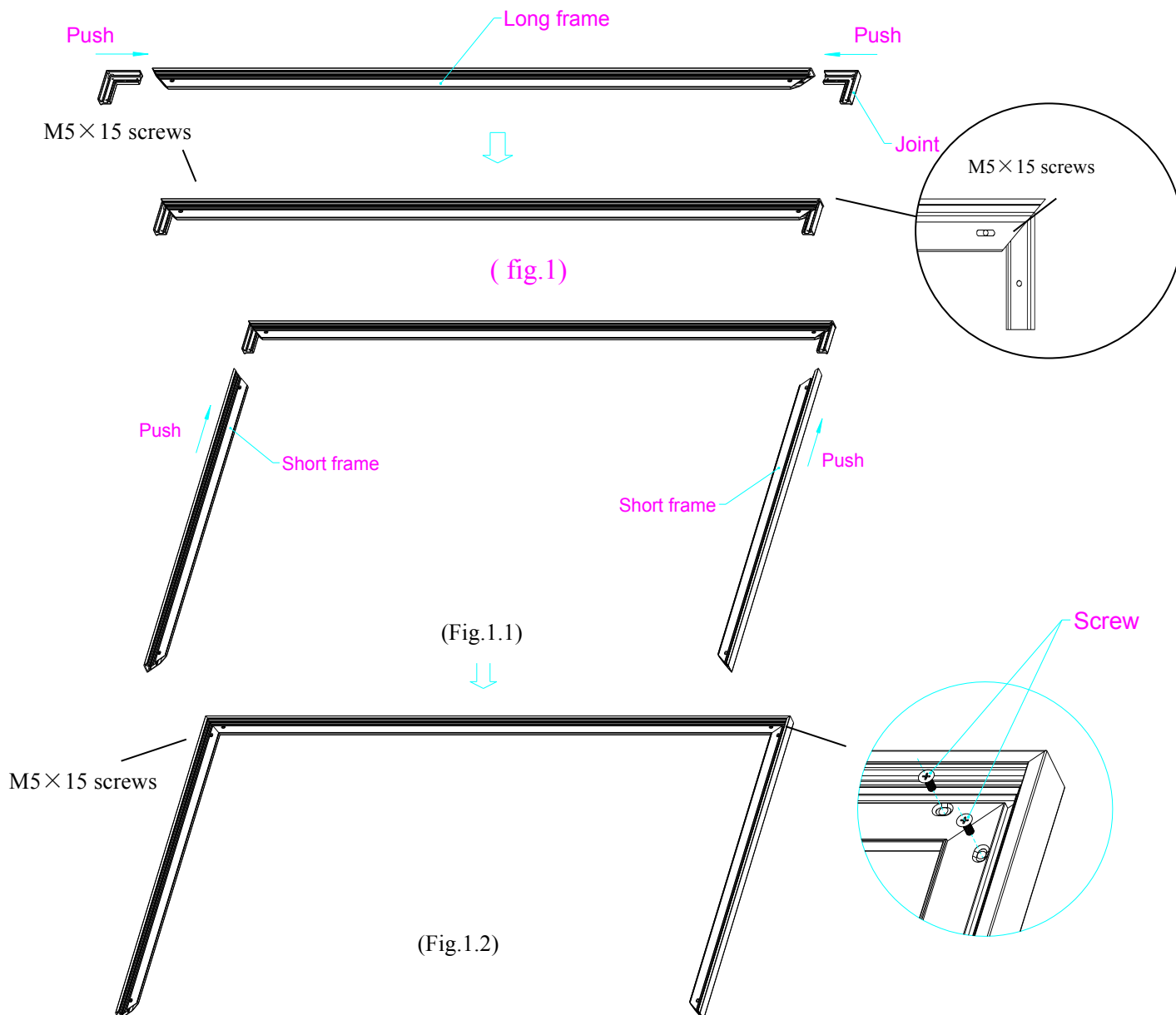
2. Insert the other 1/2 horizontal frame piece to the **center joint** connector and fasten it with two **M5x15 screws**. Repeat steps 1 and 2 for assembling the second horizontal frame.



Note: a. 2 long frames should be assembled for a screen.

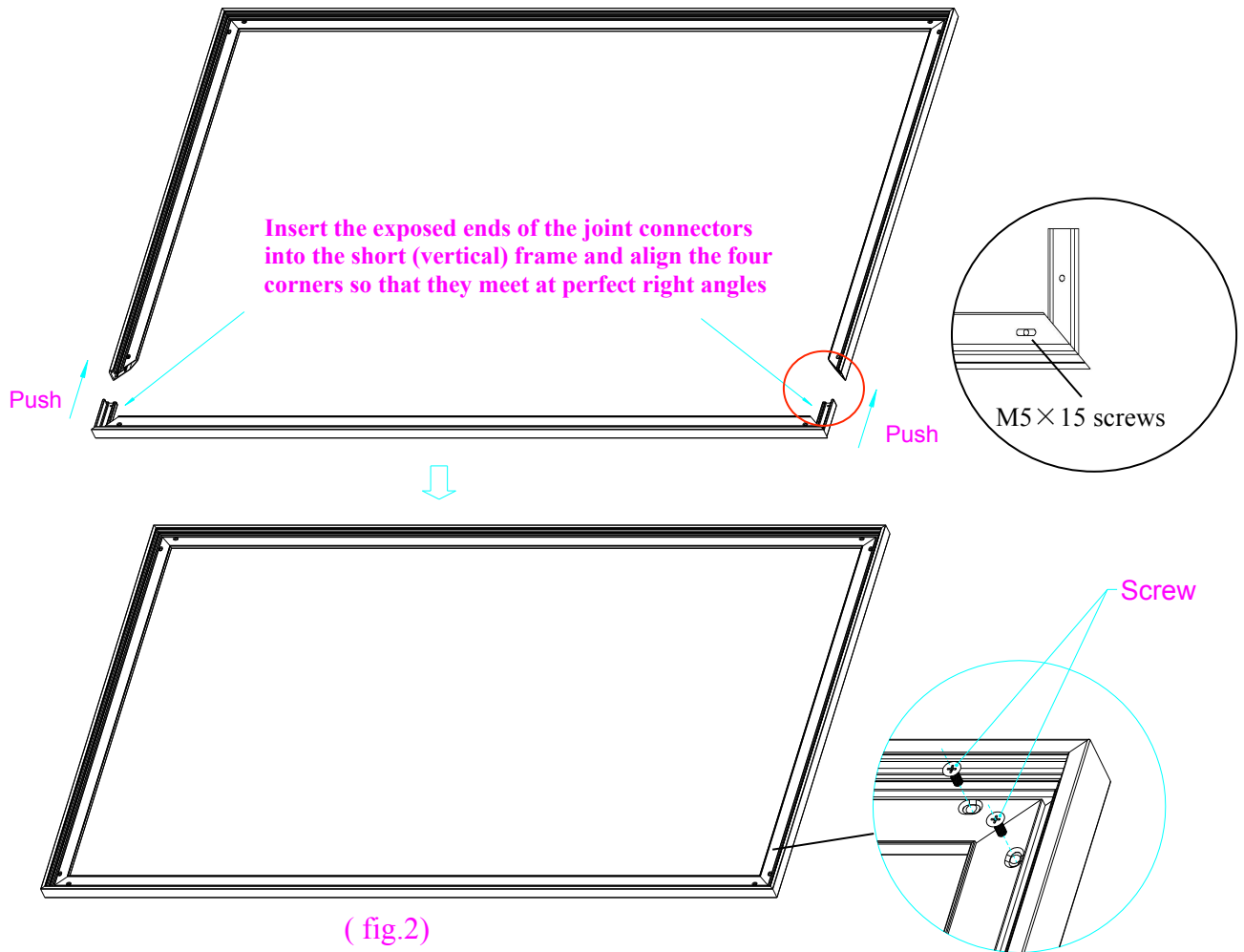
b. Do not tighten the screws completely until all frame pieces have been assembled correctly.

3. Insert both **elbow joint** connectors into the long horizontal frame and then fasten it with two **M5x15 screws** (see Fig.1). Then insert the vertical short frames and fasten them with screws (fig.1.2)



4. Join all four frame parts together following the steps shown below. (Fig.2)

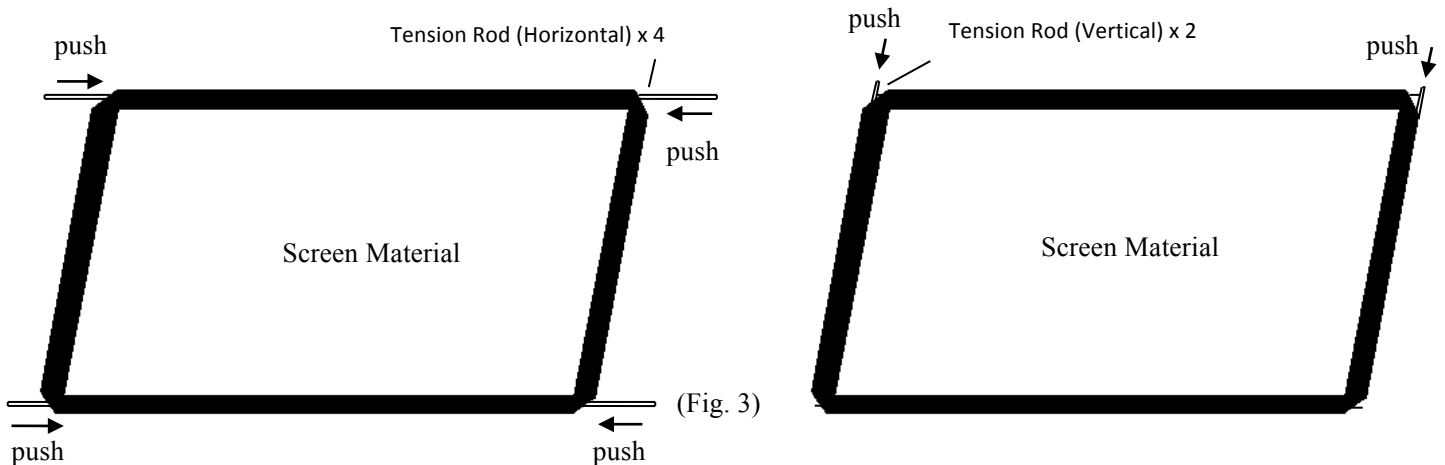
Note: When assembled, please push simultaneously the two ends of the long frames.



(fig.2)

Attaching the screen material to the frame

1. Unroll the screen material and lay it down on a clean surface. Then insert the tension rods separately into the edges of all four corners of the material (see fig.3)



(Fig. 3)

2. Make sure that the material and frame are both lying face down on a clean, dry, and non-abrasive surface.

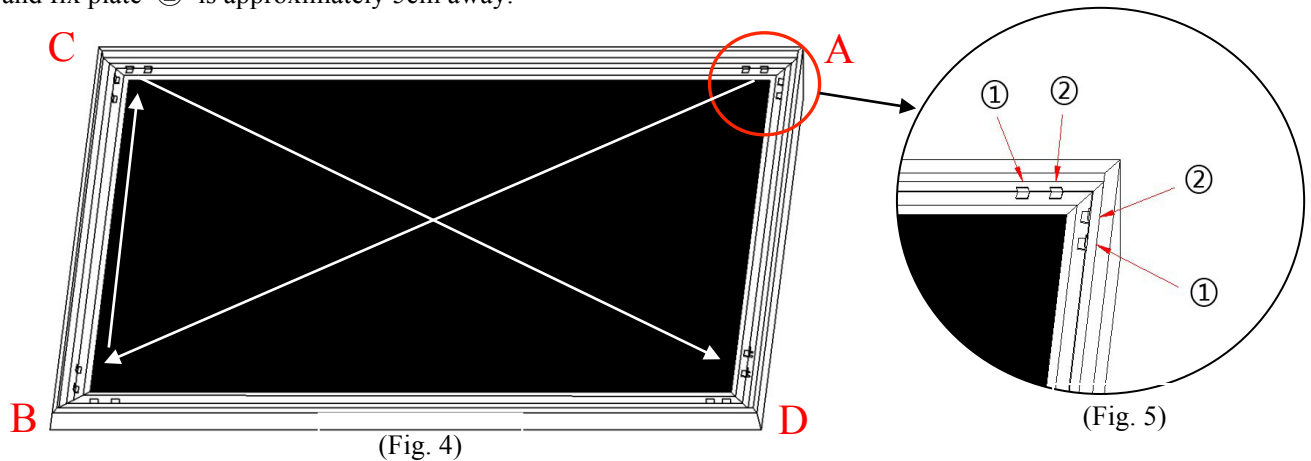
3. Center the material inside the frame.

Please note the material will be noticeably smaller than the frame, as the material must be stretched to create a sufficient amount of tension for perfect material flatness.

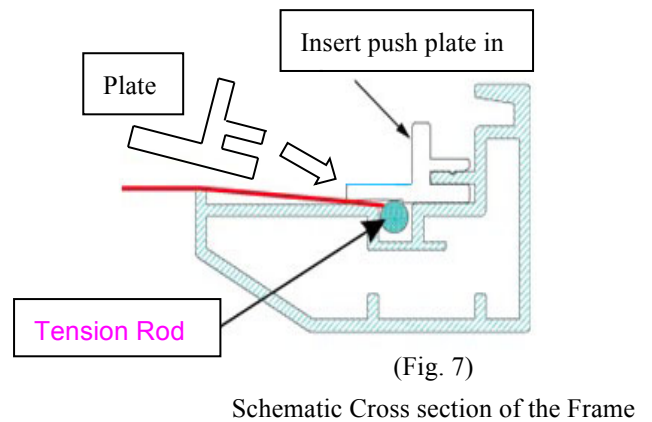
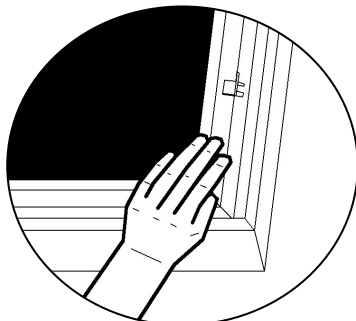
4. Attach the fix plates

(1) Begin by securing the four corners in the following order **A**→**B**→**C**→**D** (Fig.4)

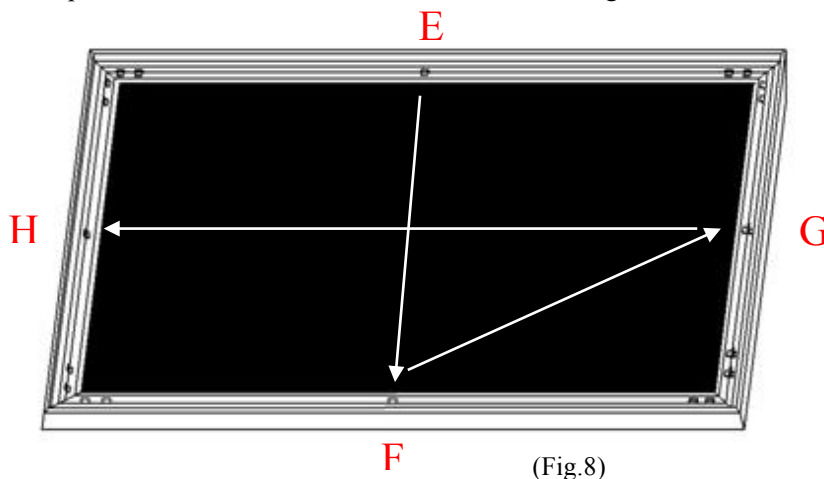
(2) Insert the fix plates as shown on Fig. 5. Fix plate ① is approximately 10 cm away from the frame's corner and fix plate ② is approximately 5cm away.

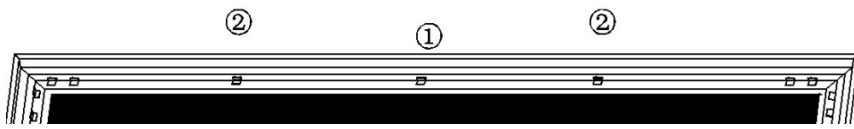


(3) Stretch the material to the corner and insert the screen material's edge into the groove of the frame. While one hand holds the material in place, the other hand snaps in the push plate (Fig.6-Fig.7).



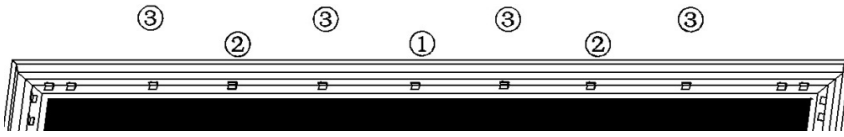
(4) Place a fix plate in the center of each side in the following order **E**→**F**→**G**→**H**. (Fig.8)





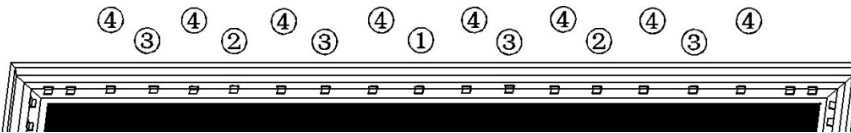
(Fig.9)

(5) Put the next set of fix plates ② in the middle between fix plate ① and the corner. (Fig.9)



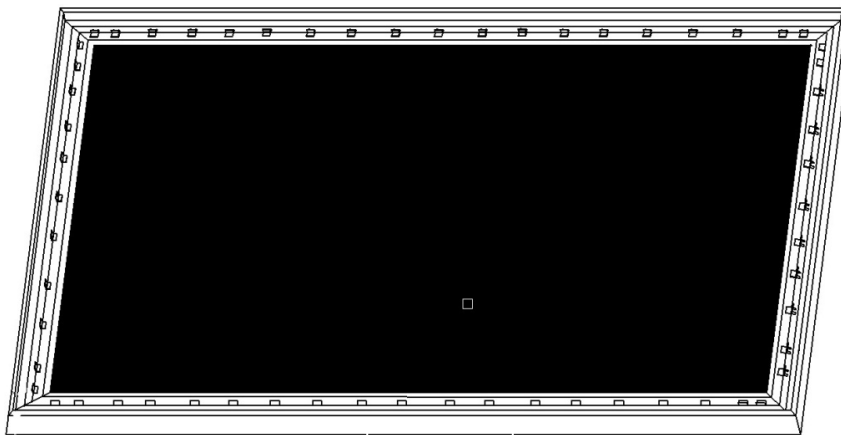
(Fig.10)

(6) Then put the next set of fix plates ③ between ① and ② and the corner. (Fig.10)



(Fig.11)

(7) Lastly, put the next set of fix plates (4) as shown in Fig.11



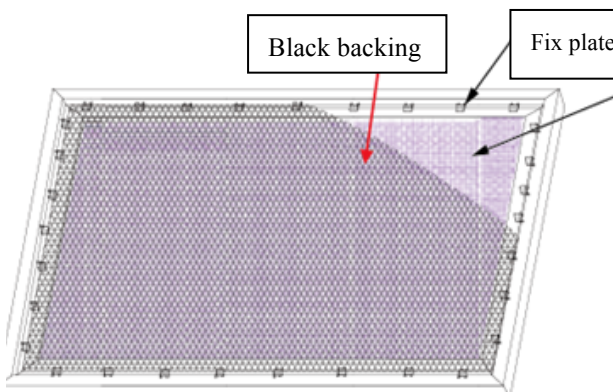
(Fig.12)

(8) Repeat steps 5-7 to for the rest of the sides to complete attaching the screen material (Fig.12)

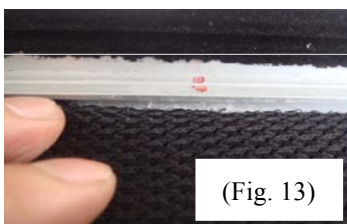
Black backing for AcousticPro models

This procedure only applies to AcousticPro models. Disregard this section if your Fixed Frame does not include an acoustically transparent screen material. The purpose of the black backing material is to block out any light penetration that may reflect off of anything mounted behind the screen, which can cause distortion to the projected image.

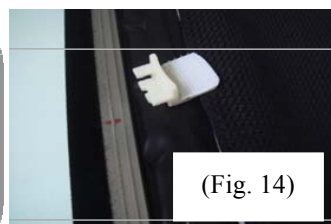
The black backing is held in place by the Velcro that is on the fix plates.



Interval markings reveal the best points for inserting the fix plates (Fig. 13). The prongs on the fix plates insert to the lip on the back of the frame creating a friction hold that will firmly keep the material and black backing in place (Fig. 14-15). After the material has been installed, the backing will lie over the back of the white (Acoustic) material and then be held in place by the Velcro on the fix plates (Fig 16).



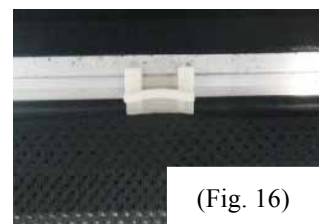
(Fig. 13)



(Fig. 14)



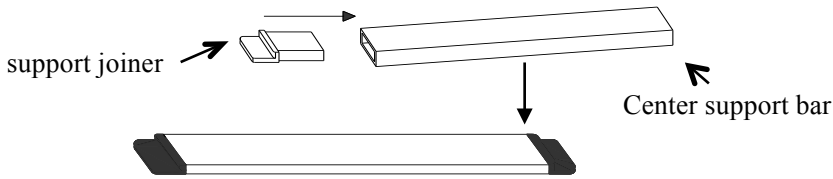
(Fig. 15)



(Fig. 16)

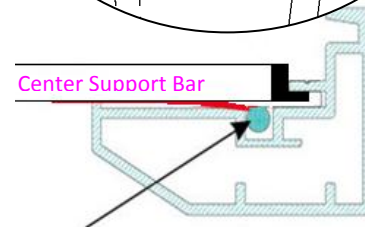
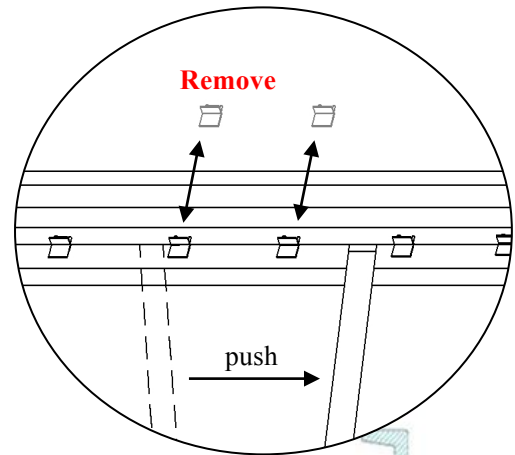
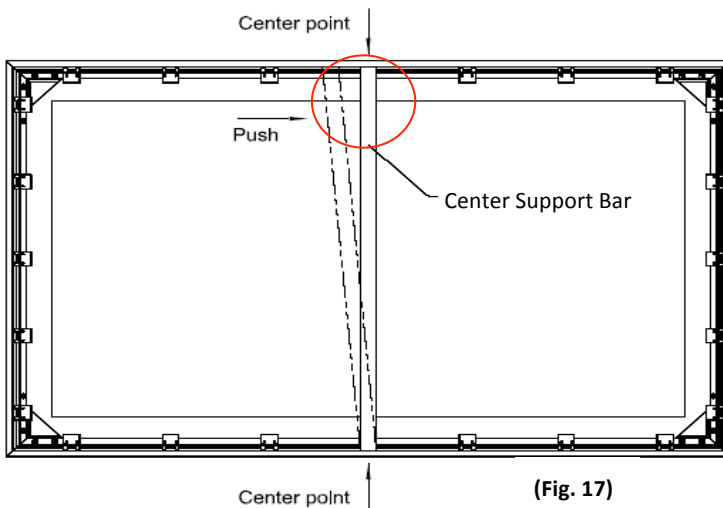
Center Support Bar

1. Insert the **support joiner** into each end of the center support bar to complete assembly.

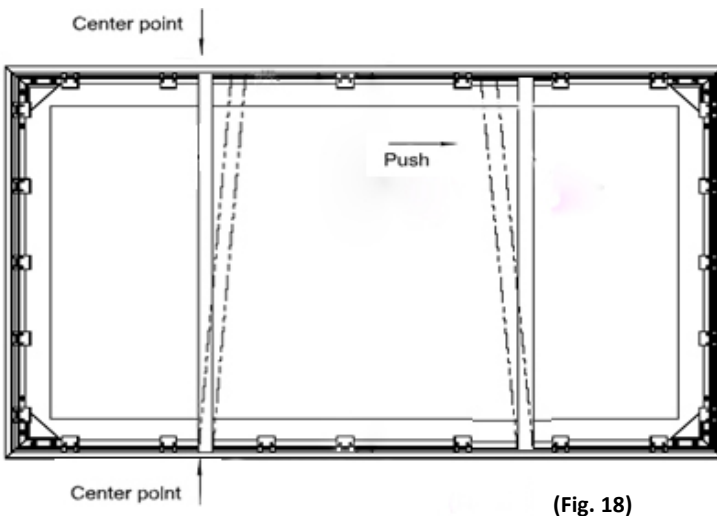


2. Insert the **Center Support Bar** into the upper top groove on the back of the frame (**not the one where the fix plate inserts**) with the bottom end near the approximate center point of the frame and rotate it in at an angle so that both ends of the bar are in alignment with the groove (see Fig. 17 and Fig. 18 below for details).

Diagonal models 135" and below use 1x Center Support Bar



Diagonal models above 135" require 2 x Center Support Bars



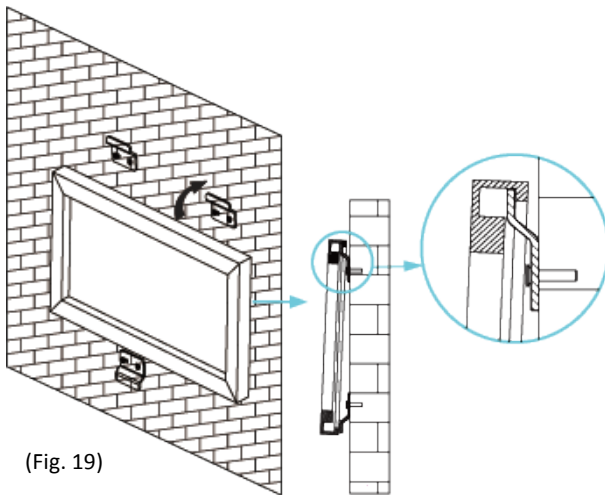
3. Slide the top end of the bar into the top center point of the frame to complete the center support bar installation. **This will provide added stability to your frame and added tension to the material.**

Installation

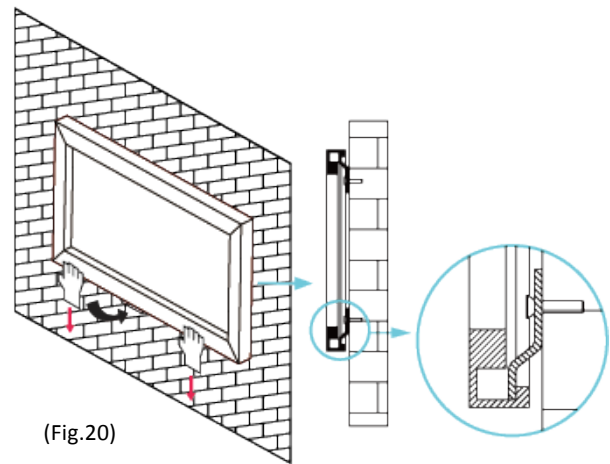
1. Locate your desired installation location with a stud finder (recommended) and mark the drill-hole area of where the screen is to be installed.
2. Drill a hole with the proper bit size according to the wood screws included.
3. Line up the wall brackets with the drilled holes on the installation location and screw them in using a Phillips screwdriver.

Note: Use 2 top wall brackets on diagonal sizes below 135", and use 3 top wall brackets on diagonal sizes 135" and above.

4. Position the fixed frame screen onto the top wall brackets as shown in (Fig. 19) and push down at the center of the bottom frame to secure the installation.
5. The design of the wall brackets allows the frame to slide over them through its sides. This is an important feature of the installation design as it allows your screen to be properly centered.
6. Using both hands finish the installation by pushing the lower portion of the fixed frame screen into the lower bracket as shown in Fig 20.



(Fig. 19)



(Fig.20)

CAUTION

Please follow these instructions carefully to ensure proper maintenance and safety of your Fixed Frame Screen

1. When hanging the screen up, please make sure that no other objects such as power switches, outlets, furniture, ladders, windows, etc. occupy the space designated for your Fixed-Frame screen.
2. Regardless if the screen is hung on or installed into the wall, make sure that the proper mounting anchors are used and that the weight is supported appropriately by a strong and structurally sound surface just as any large and heavy picture frame should. *(Please consult a home improvement specialist for the best advice on installation)*
3. Frame parts are made of high quality velour-surfaced aluminum and should be handled with care.
4. When not in use, cover over the screen with a furniture sheet to protect it from dirt, grime, paint or any other impurities.
5. When cleaning, use a damp soft cloth with warm water to remove any marks on the frame or screen surface.
6. Never attempt to use any solutions, chemicals or abrasive cleaners on the screen surface.
7. In order to avoid damaging the screen, avoid touching it directly with your fingers, tools or any other sharp or abrasive objects.
8. Spare Parts should be placed out of reach of small children in accordance with household safety guidelines.

For a local Elite Screens contact or Technical Support, please visit

www.elitescreens.com